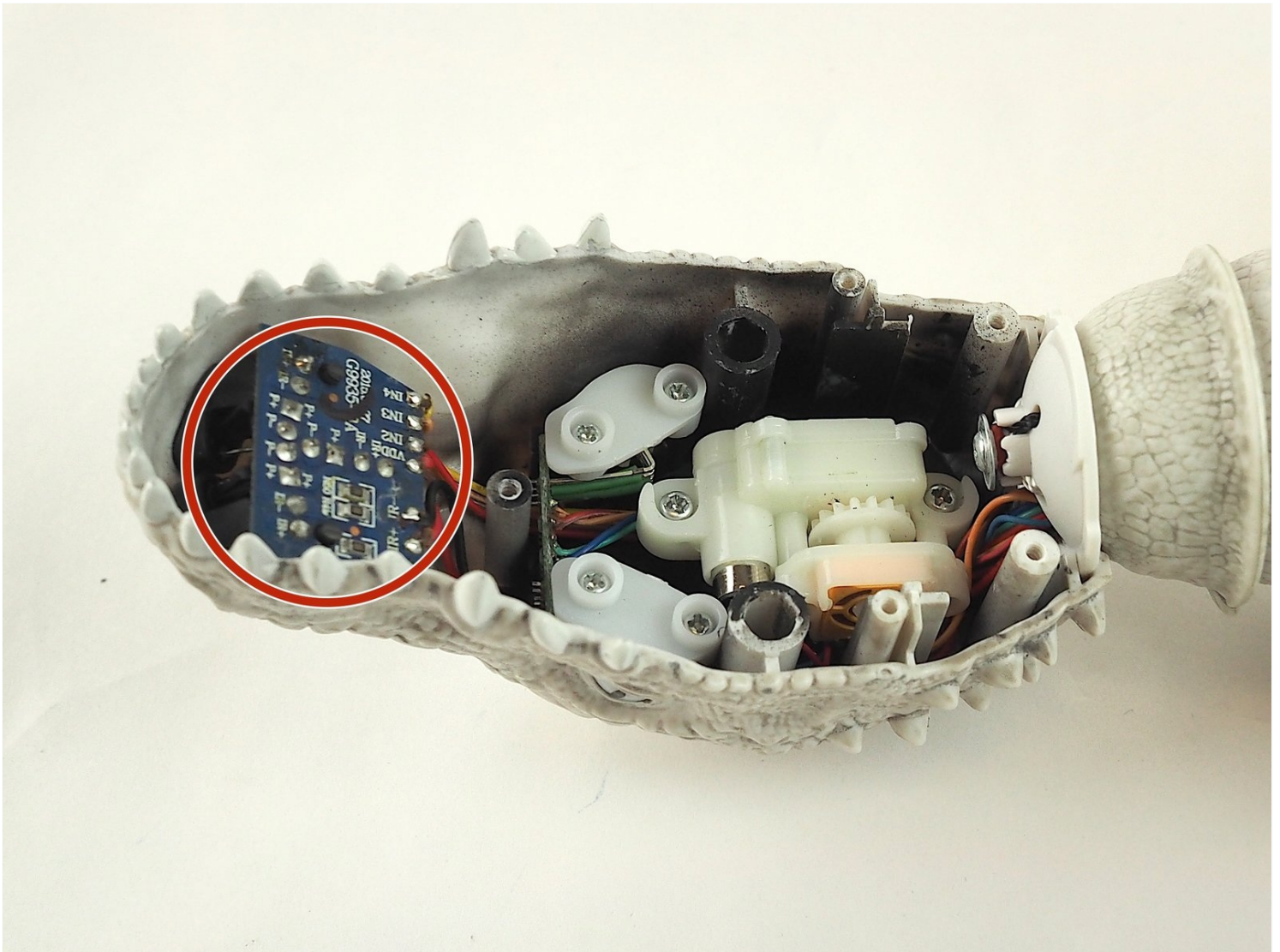




Zoomer Jurassic World Indominus Rex Nose Sensors Replacement

Here it is! The mighty Indominus Rex has fallen...

Written By: Luke Selby



INTRODUCTION

Here it is! The mighty Indominus Rex has fallen prey to mechanical failure. Let's get him up and running again.

TOOLS:

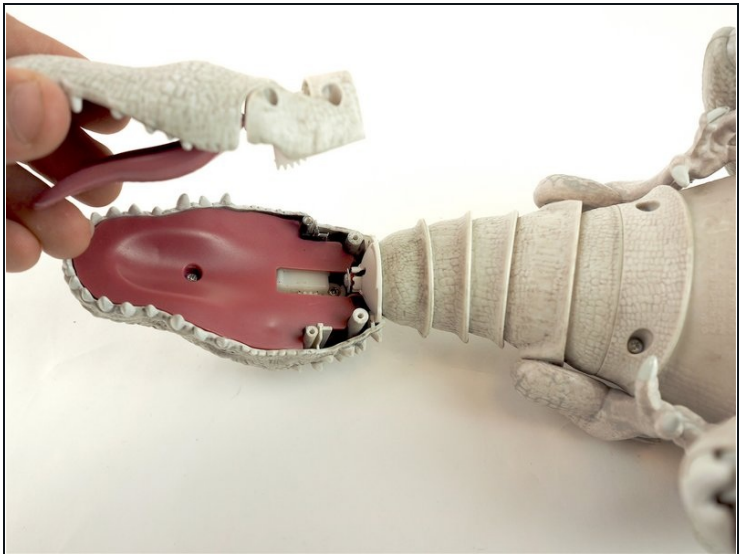
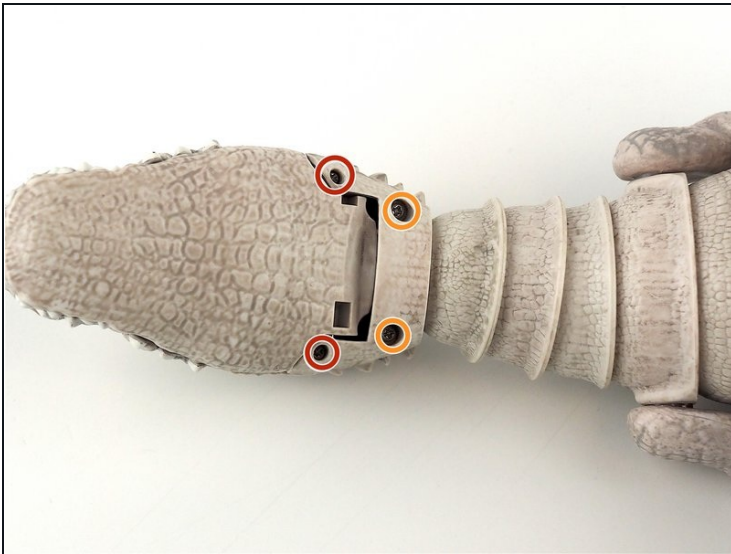
Heavy-Duty Spudger (1)

Phillips #0 Screwdriver (1)

Soldering Workstation (1)

Phillips #1 Screwdriver (1)

Step 1 — Mouth Part



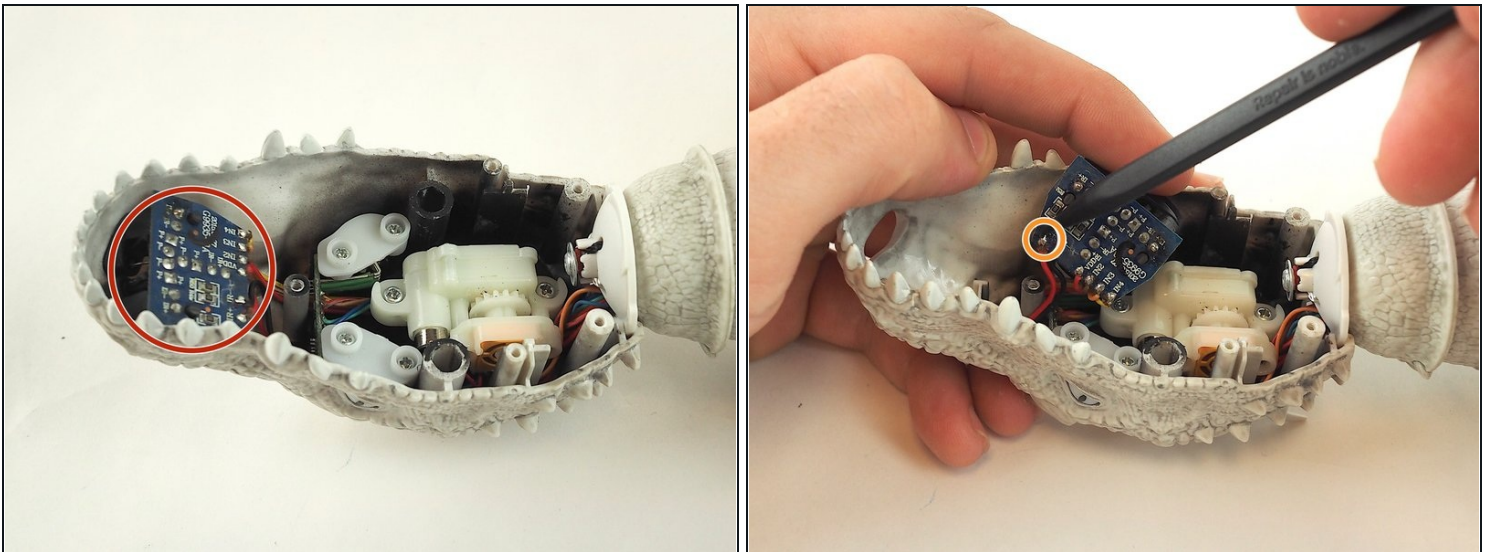
- ① Flip the toy over to gain direct access to the first screws you need to remove for the replacement.
- Remove the two (2) 7.5mm phillips screws using Phillips #1 screwdriver from the bottom of the jaw.
- Remove the two (2) 7.2mm phillips screws using Phillips #0 screwdriver from the bottom of the jaw.
- Gently remove the entire bottom jaw piece.

Step 2



- Remove the 7.5mm phillips screw using Phillips #1 screwdriver from the middle of the tongue.
- Using a spudger, gently pry the tongue out of the mouth.

Step 3 — Nose Sensors



- Carefully, pull out the circuit board that has the three nose sensors attached.
- You're almost done! The only thing left to do is to use a soldering iron to remove the six (6) wires connected to the circuit board.
⚠ Use caution when soldering to avoid being burned.

To reassemble your device, follow these instructions in reverse order.

