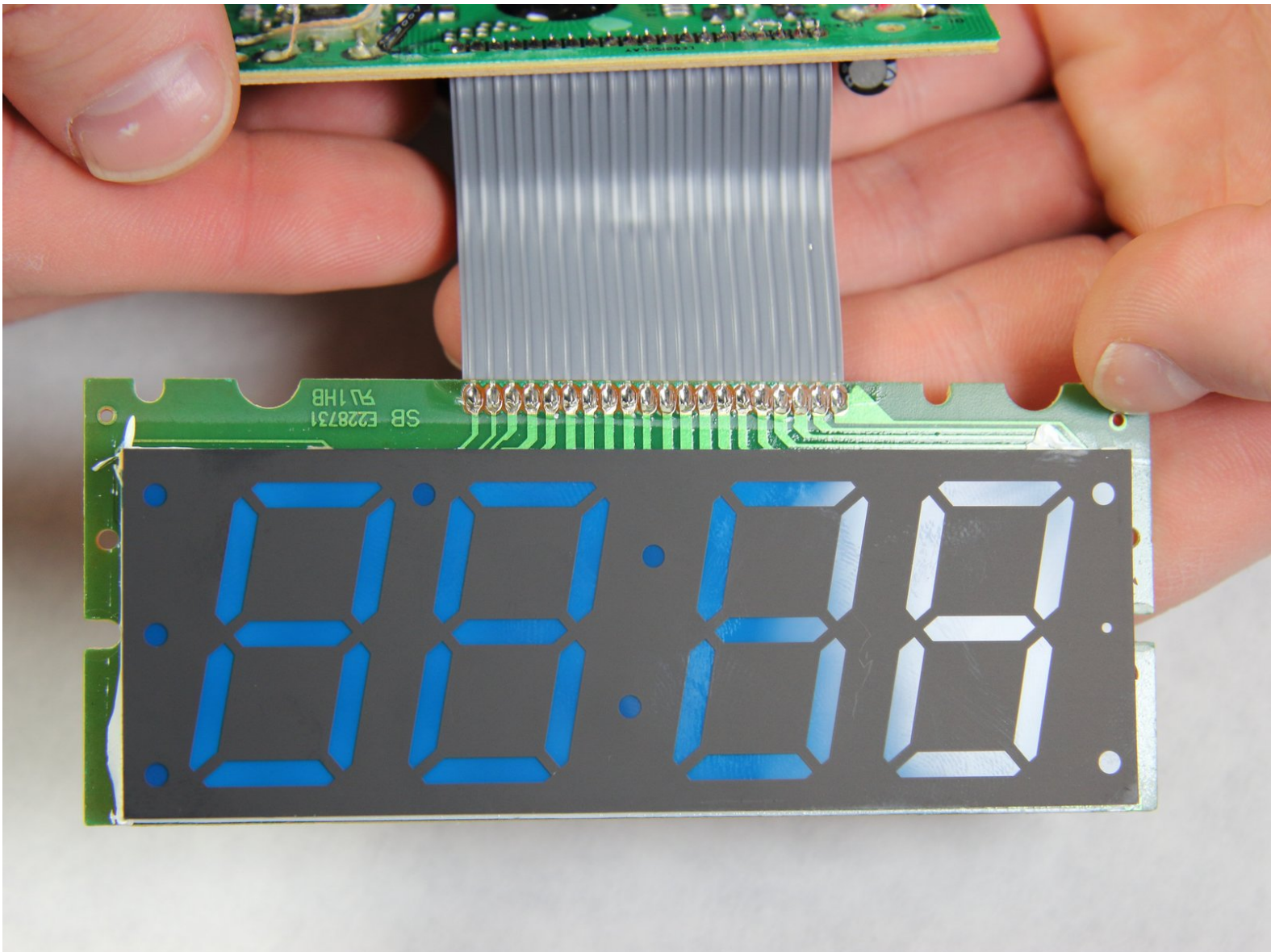




# Electrohome EAAC475 Display Replacement

This guide will show you how to access and replace the display from your electrohome EAAC475.

Written By: Sohail Khatri



---

## INTRODUCTION

Use this guide to replace a faulty display or fix the wire connection between the circuit board and the display in an electrohome EAAC475 .

---

### TOOLS:

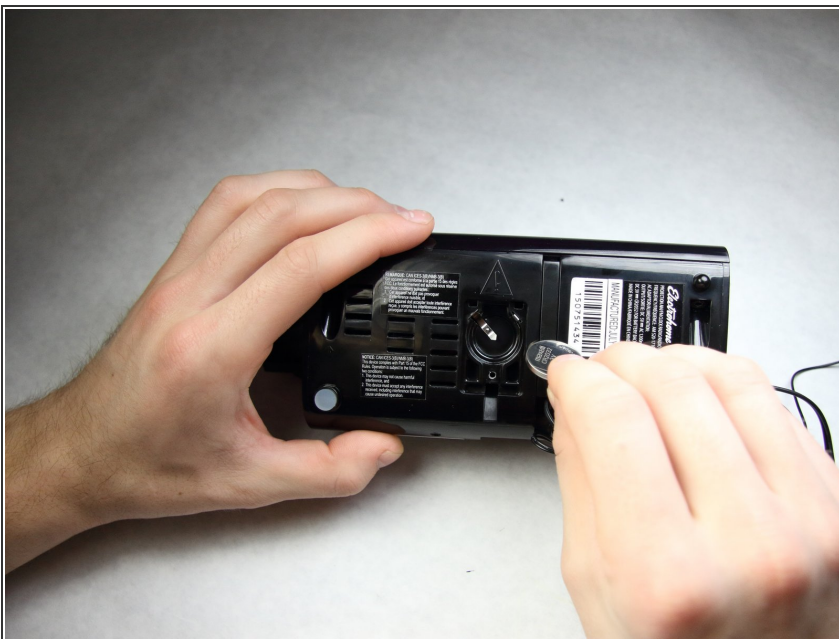
- [Phillips #1 Screwdriver](#) (1)
-

## Step 1 — Battery



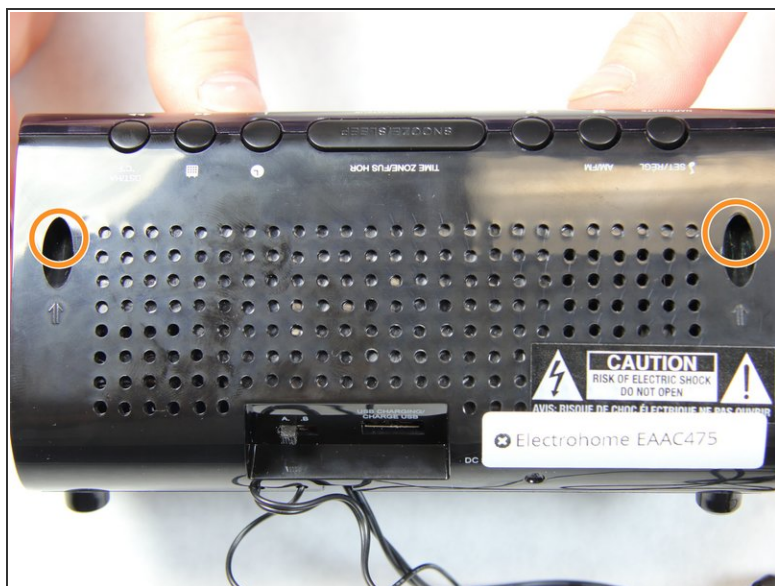
- Remove the 10 mm Phillips #1 screw from the battery cover.
- Remove the battery cover.


## Step 2



- Remove the flat lithium battery.

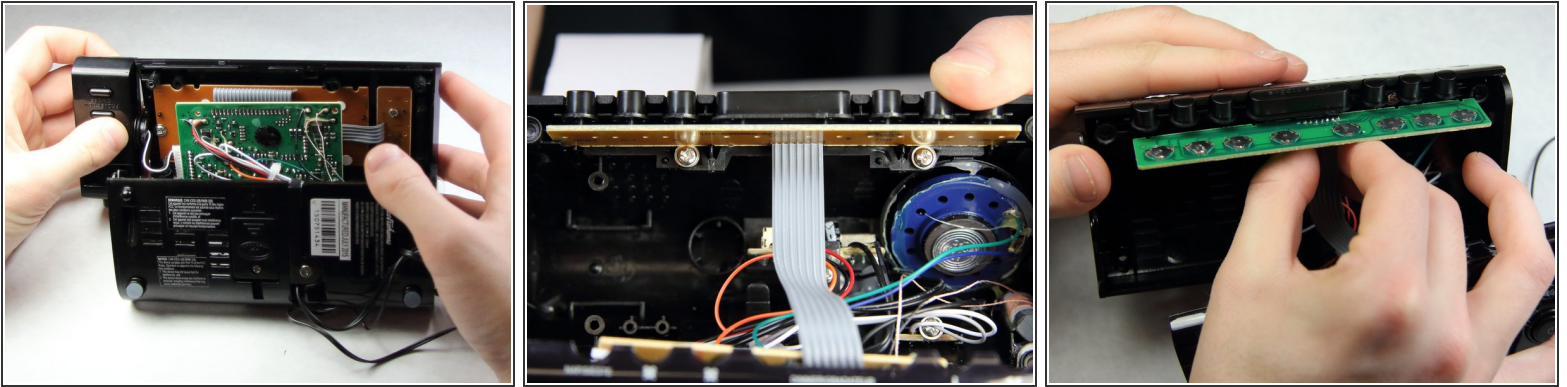
## Step 3 — Buttons




 Disconnect the radio from all power sources.

- Remove the two 10 mm Phillips #1 screws from the bottom of the device.
- Remove two 10 mm Phillips #1 screws from the back side of the device.

## Step 4

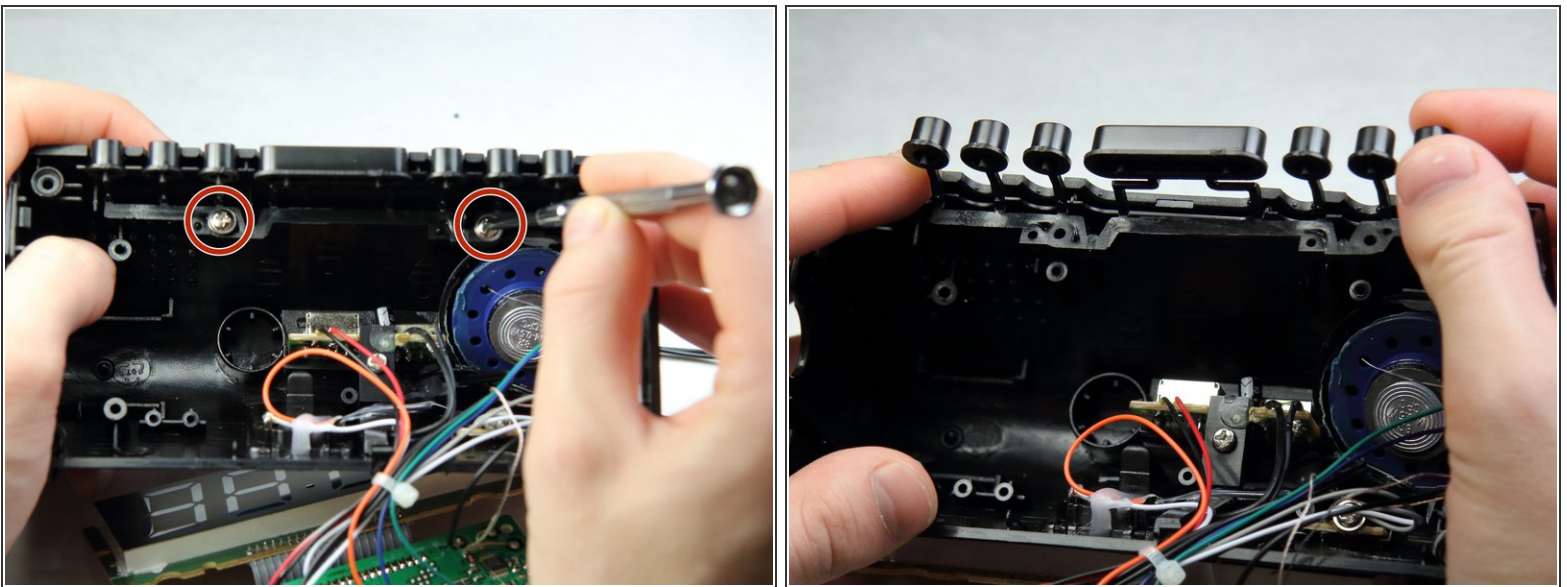


- Carefully and slowly pull the lower case away from the rest of the device.

 Do not completely separate the lower case. There are several wires connecting the two halves of the device.

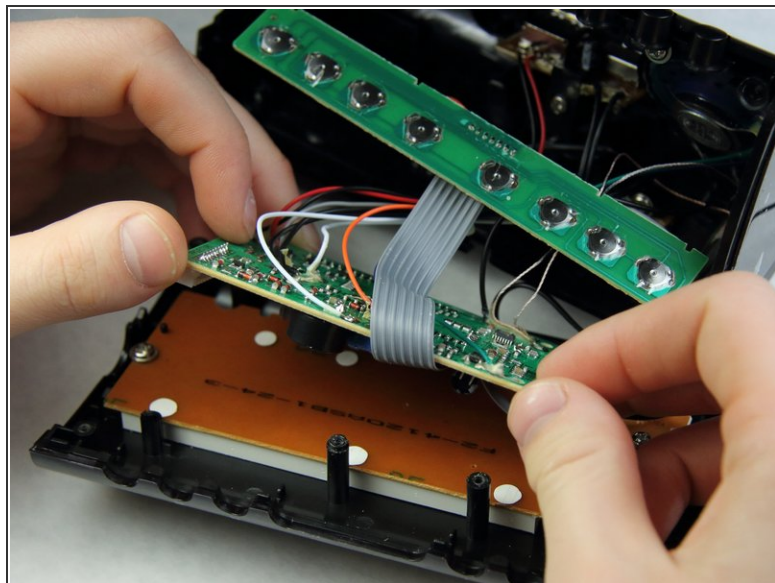
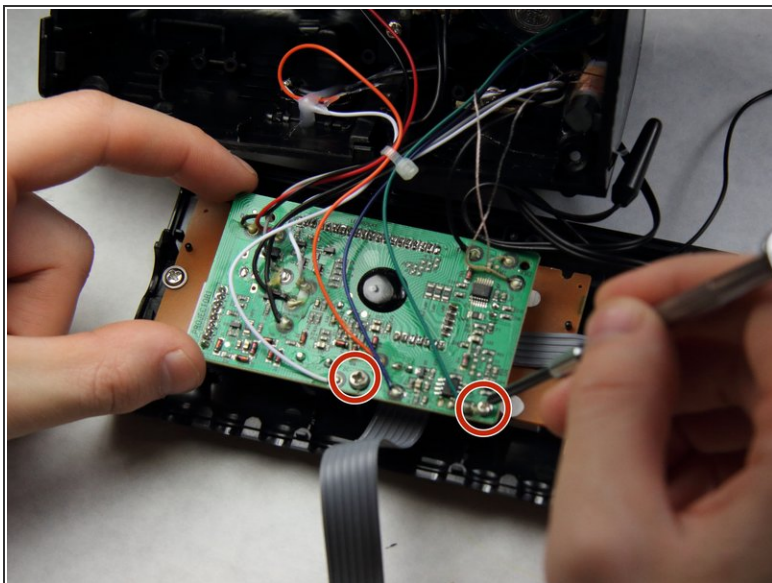
- Flip the device over to access the button assembly.
- Slowly remove the button contact board from the assembly.

## Step 5



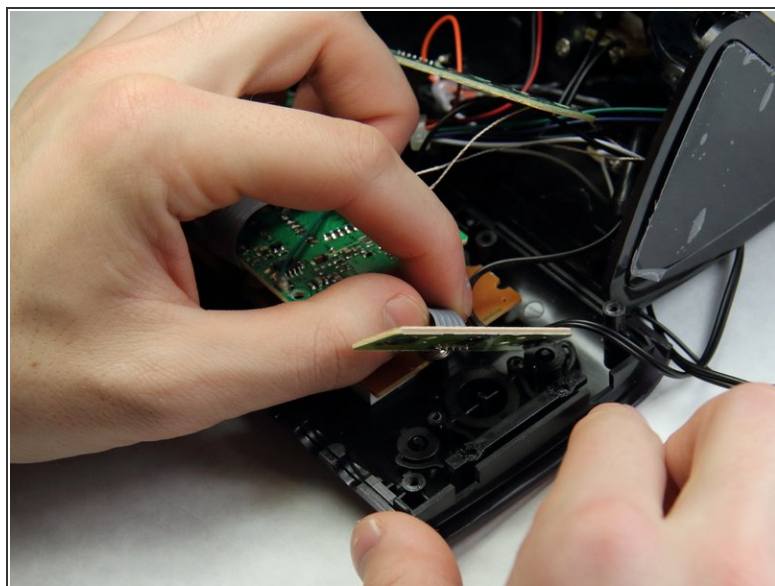
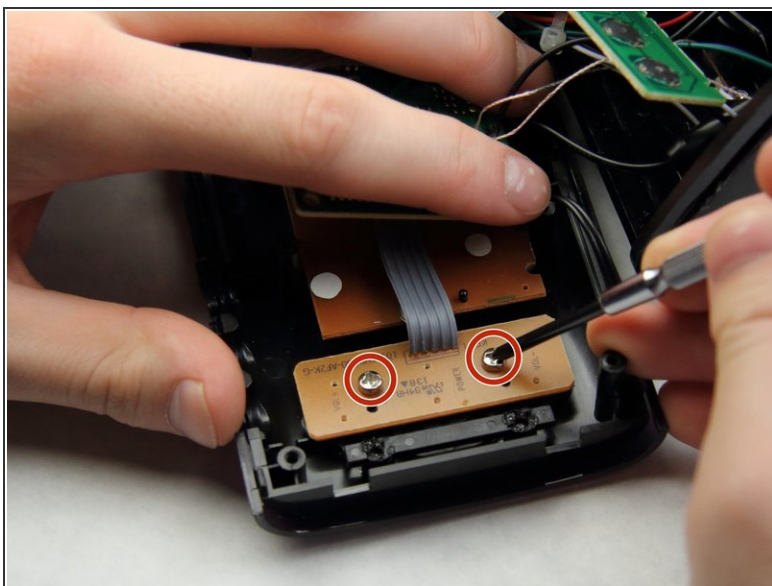
- Remove the two 7 mm Phillips # 1 screws holding the buttons.
- Remove the plastic buttons.

## Step 6 — Display



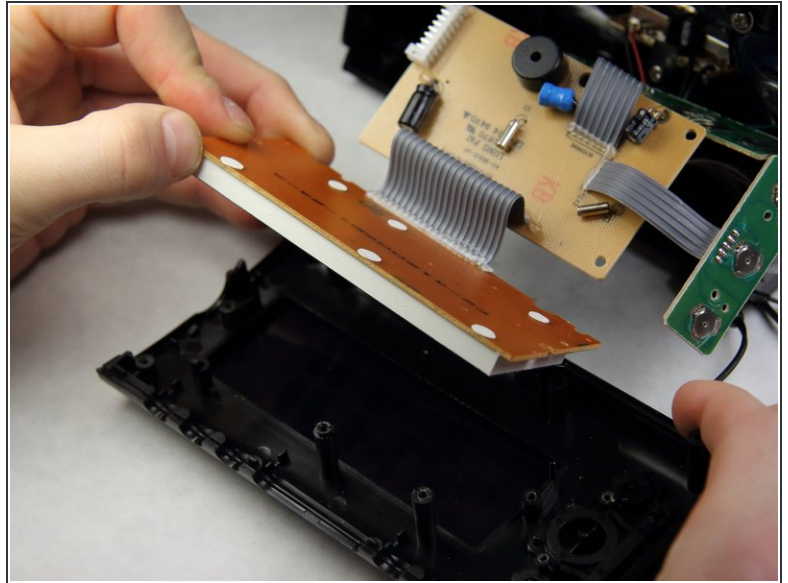
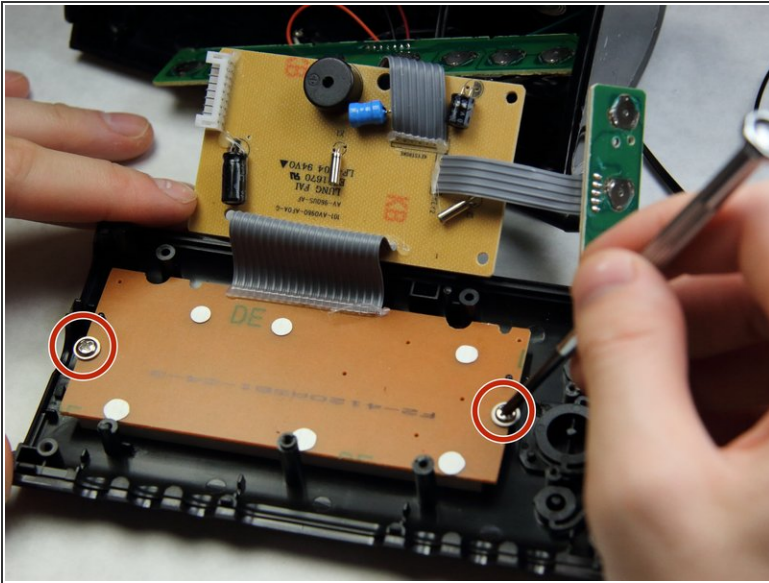
- Remove the two 8 mm Phillips screws supporting the circuit board.
- Pull off the circuit board to access the panels below.

## Step 7



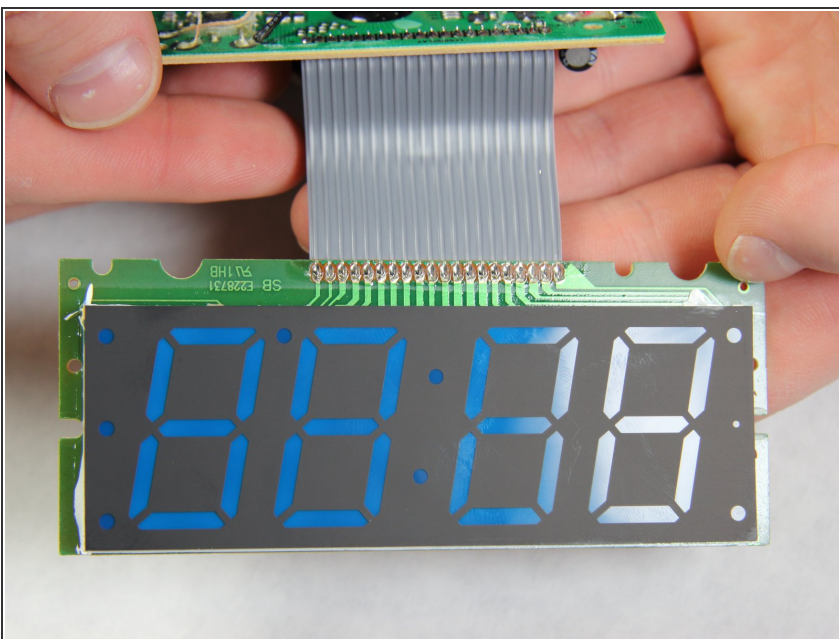
- Remove the two 6 mm Phillips screws supporting the mini circuit board for the frontal buttons.
- Remove the mini circuit board.

## Step 8



- Move the now free circuit boards away from the display.
- Remove the final two 7 mm Phillips screws securing the display.
- Pull the display screen away from the casing.

## Step 9



- You have successfully accessed the display.
- ☑ Replacing the display with a new one will be challenging as soldering and connecting micro wires are necessary.

To reassemble your device, follow these instructions in reverse order.