



Dell Studio 1535 Hard Drive Replacement

Here we'll cover how to remove the bottom hatch...

Written By: Eric Bentley



INTRODUCTION

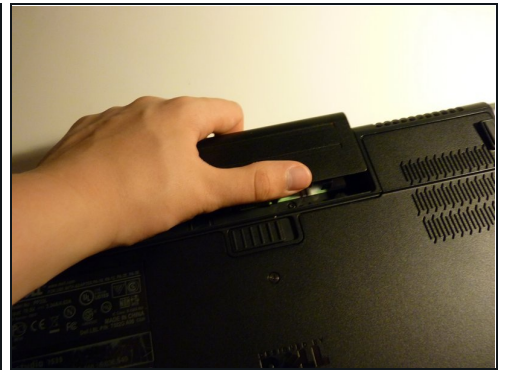
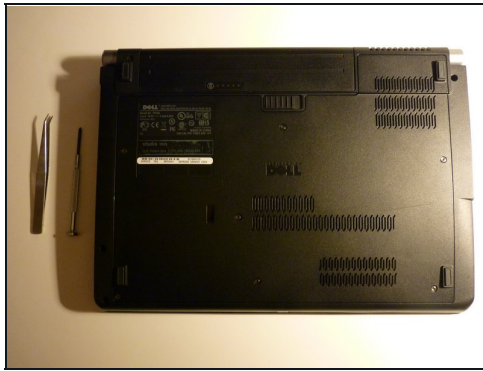
Here we'll cover how to remove the bottom hatch of the laptop, how to remove the drive caddy, and how to remove the actual hard drive. .

TOOLS:

Phillips #0 Screwdriver (1)

Tweezers (1)

Step 1 — Hard Drive



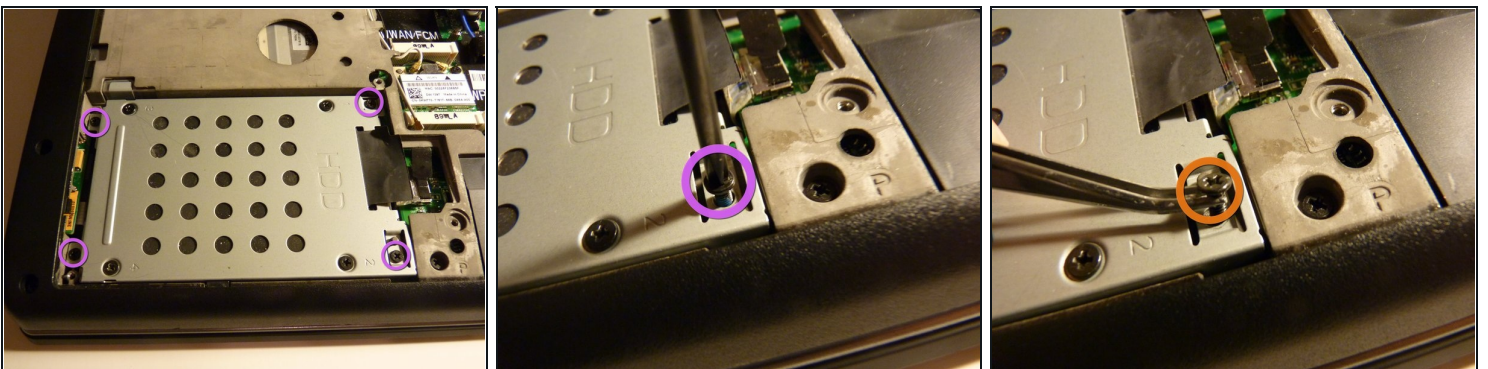
- Gather tools and materials
- Flip over laptop, and remove battery as a safety precaution

Step 2



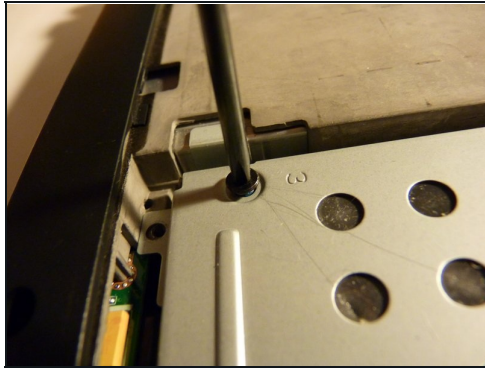
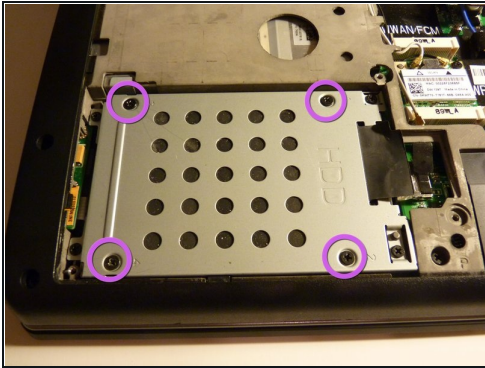
- If you look at the bottom of the laptop, you will notice that there is a panel that is removable
- Unscrew the screws that hold the panel in place
 - Unscrew the screws until they are loose. They will not come out of the panel
- After loosening all the screws, lift the panel up from the main chassis
 - You may need to use a flathead screwdriver to lift the panel

Step 3



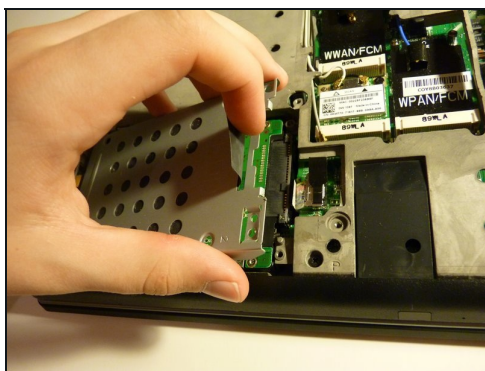
- Now we have access to the internals of the laptop, pretty neat
- If the battery is away from you, the hard drive should be closer towards you on the left
- Start by removing the screws holding the caddy into the chassis
 - These screws have a more rounded top, and are longer
- Once loosened, you can remove with your fingers or tweezers, and then set them aside

Step 4



- Now we remove the screws holding the drive to the caddy
 - These screws have a flatter head, and are shorter
 - These are standard drive screws that are used to mount any hard drive to a mounting device, such as brackets to put it in a desktop computer
 - The manufacturer likes to put these in very tightly, and it may take some effort to remove. I suggest using a screwdriver with a bigger handle, not the one I am using
 - Set these screws aside, apart from the screws we removed in the last step

Step 5



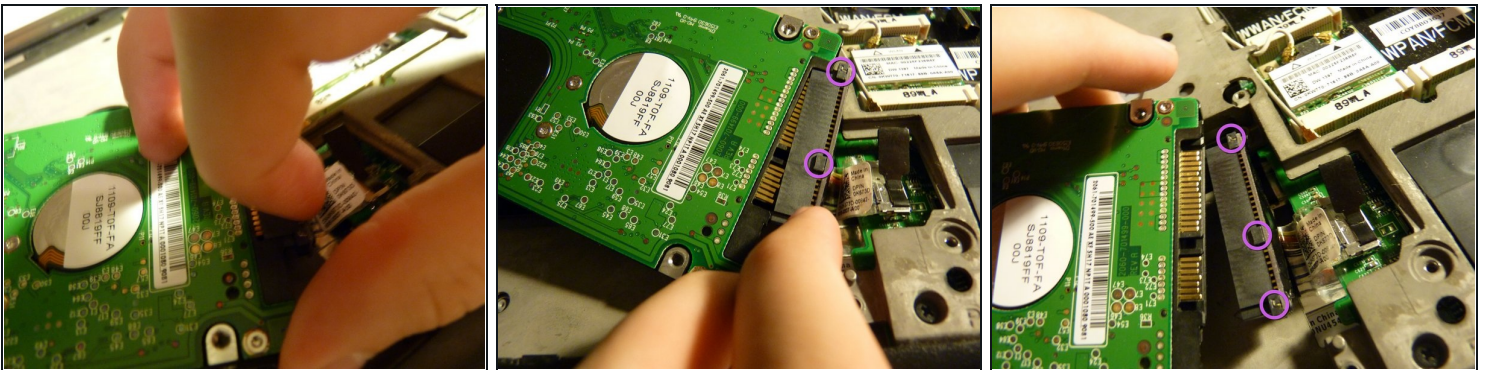
- Now that the screws are removed, the caddy can be removed from the chassis and drive
 - Pull the black tab on the right side of the caddy, and pull up
 - It might take some wiggling but it should come out

Step 6



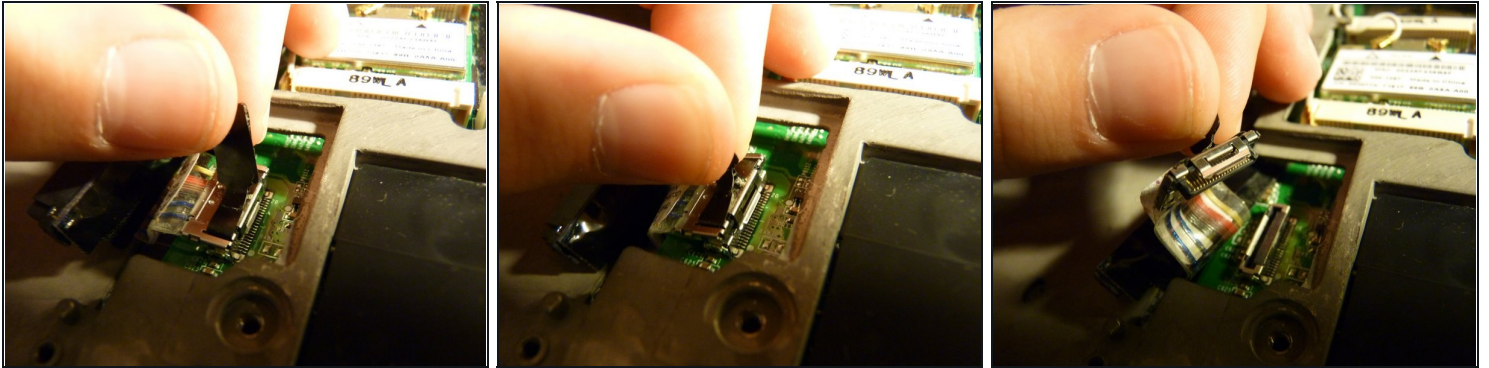
- Now that the caddy is removed, we can lift the drive out of its place
- It should lift out easily, but it will still be attached with a cable
- Set it aside on top of the optical drive (the metal surface)

Step 7



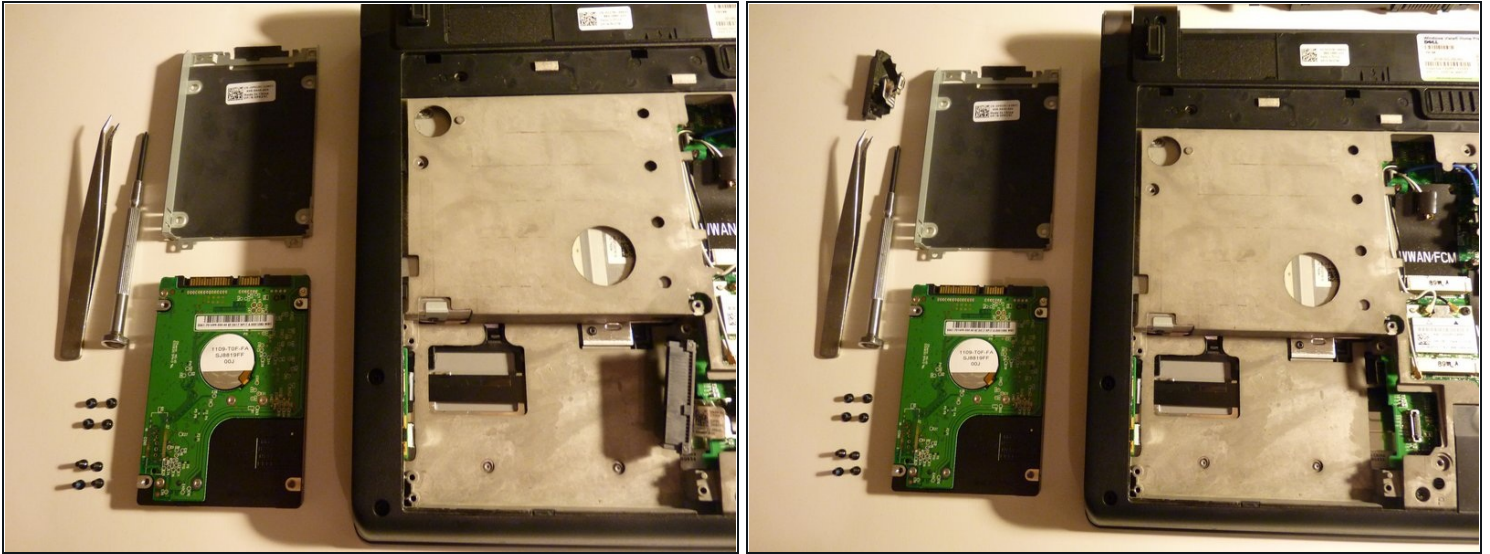
- Now that the drive is removed, we have to remove the cable connecting it to the motherboard
- It may be hard to do at first, but there are some grooves that you can use to hold on to
- Pull the connector from the drive gently
 - Wiggling the connector a bit does help a little

Step 8



- If you found it difficult to remove the drive or the cable connecting the drive to the motherboard, you can remove the whole cable at once
- If you look to the right of the drive, you will see another tab, this one is black, but I've also seen blue ones
- Pull this tab gently in order to remove the cable
 - Again, wiggling also helps

Step 9



- If you removed the drive using steps 1-7 then what you have should be left in picture 1
- If you had trouble removing the drive, and you went through to step 8, then the parts remaining will be in picture 2
- The drive should have a SATA interface, so you should be able to mount it into another computer using 2.5" to 3.5" converter brackets and a SATA cable

To reassemble your device, follow these instructions in reverse order.