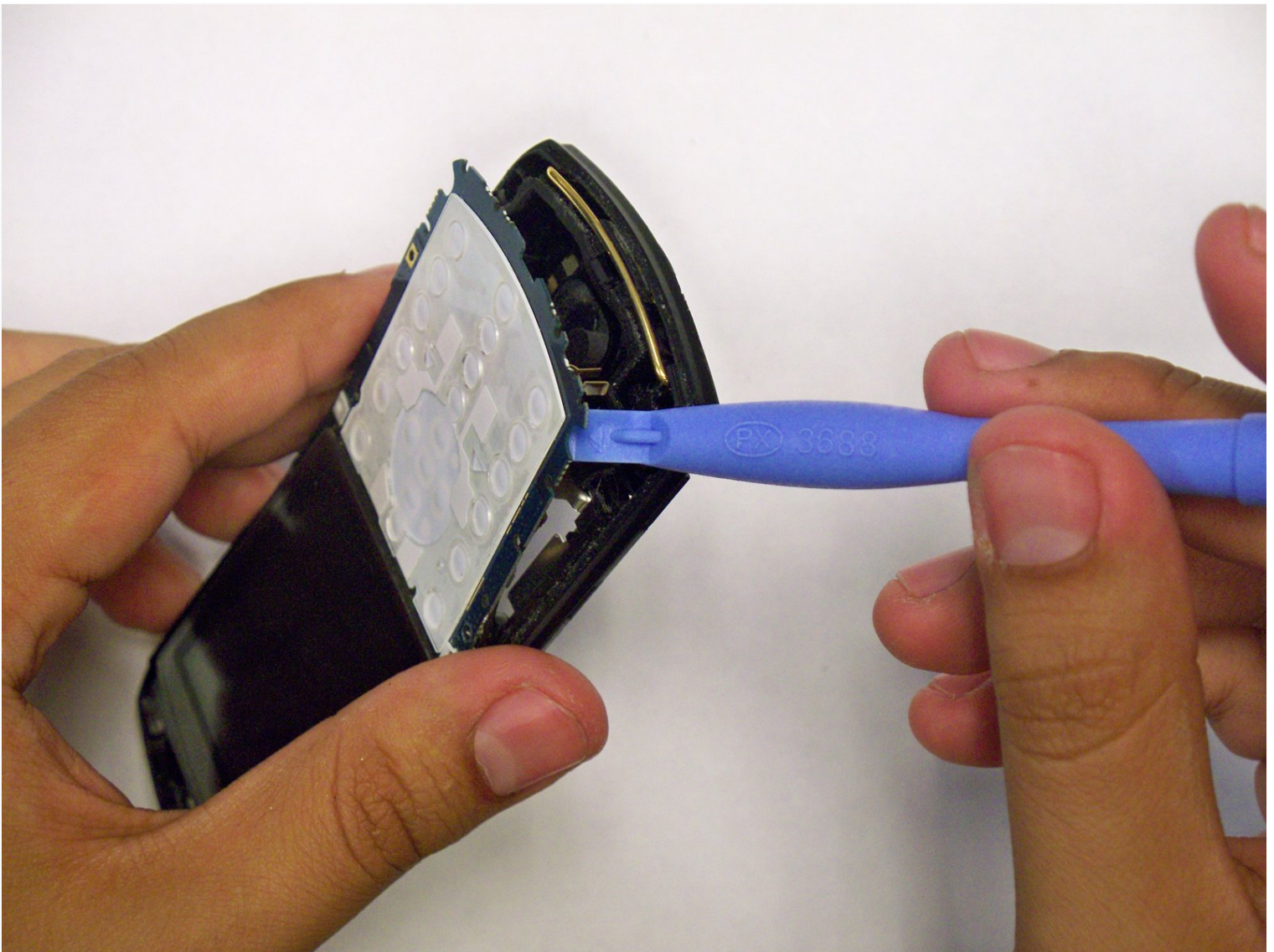




# Motorola Slvr L7 Keypad Replacement

Use this guide to replace the keypad.

Written By: Jorge Trujillo



# INTRODUCTION

Use this guide to replace the keypad.



## TOOLS:

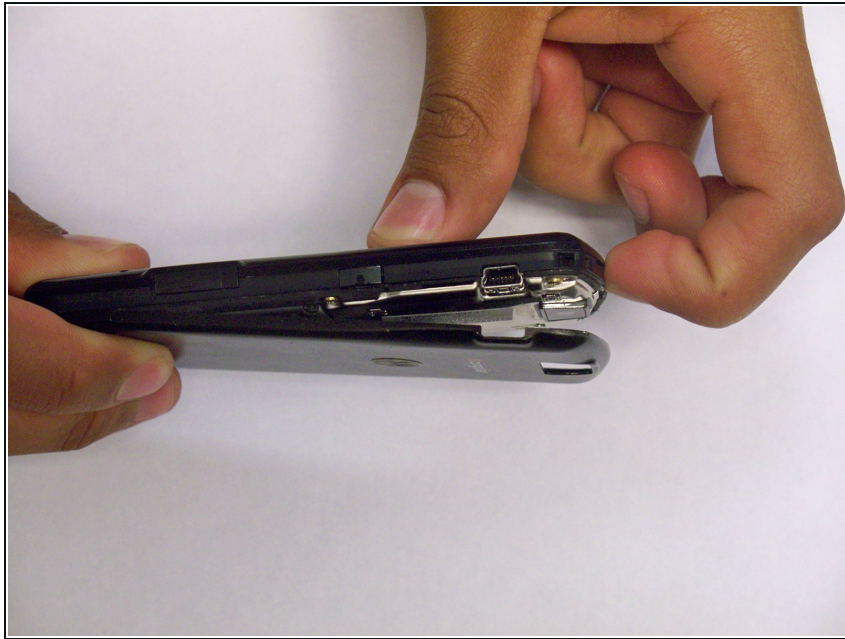
[T6 Torx Screwdriver](#) (1)  
[iFixit Opening Picks \(Set of 6\)](#) (1)  
[iFixit Opening Tool](#) (1)



## PARTS:

[Motorola Slvr L7 Keypad](#) (1)

## Step 1 — Keypad



**⚠** To ensure safety, discharge your phone battery below 25% before starting. A fully charged lithium-ion battery may cause a fire and/or explosion due to defects or damage.

- Turn off your phone before beginning disassembly.
- Remove the phone back cover by firmly pushing down on the black tab located at the top center of the Motorola Slvr L7.

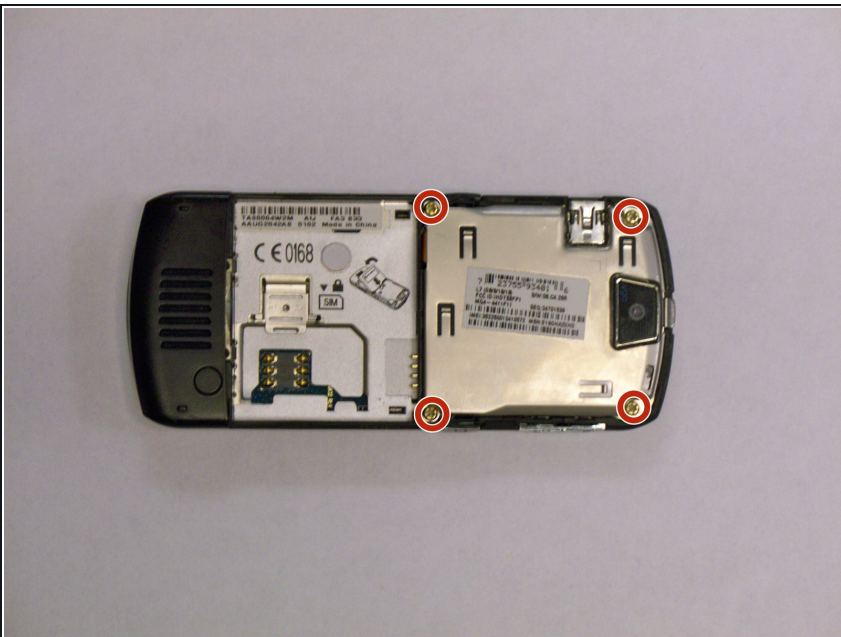


## Step 2



- Remove the battery by pressing it towards the rear-facing camera while pulling it outward.

## Step 3



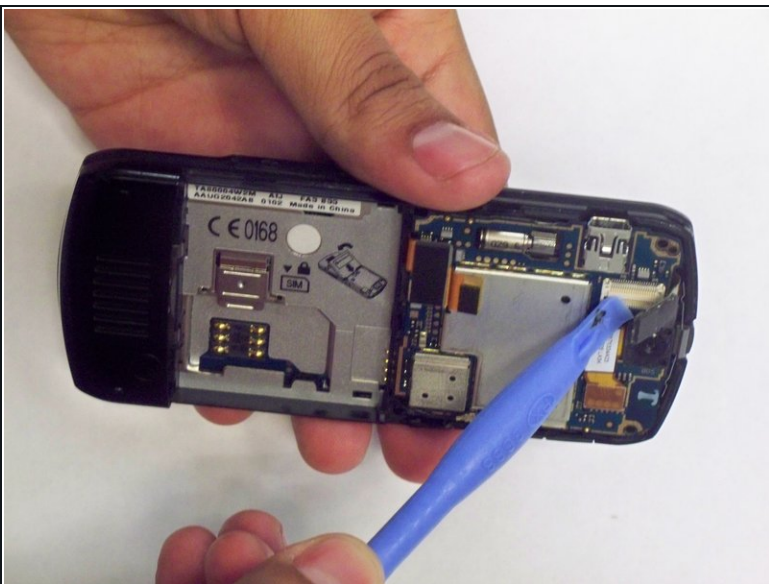
- Using a T6 Torx Screwdriver, remove the four (4) T6 2 mm Torx screws that are securing the rear metal plate.
- Apply moderate pressure with the screwdriver and rotate it counterclockwise to loosen the screw.
- Ensure that you keep track of the screws and return them to their original positions once the repair is finished.

## Step 4



- Gently use the iFixit opening tool to lift the metal cover away from the phone.

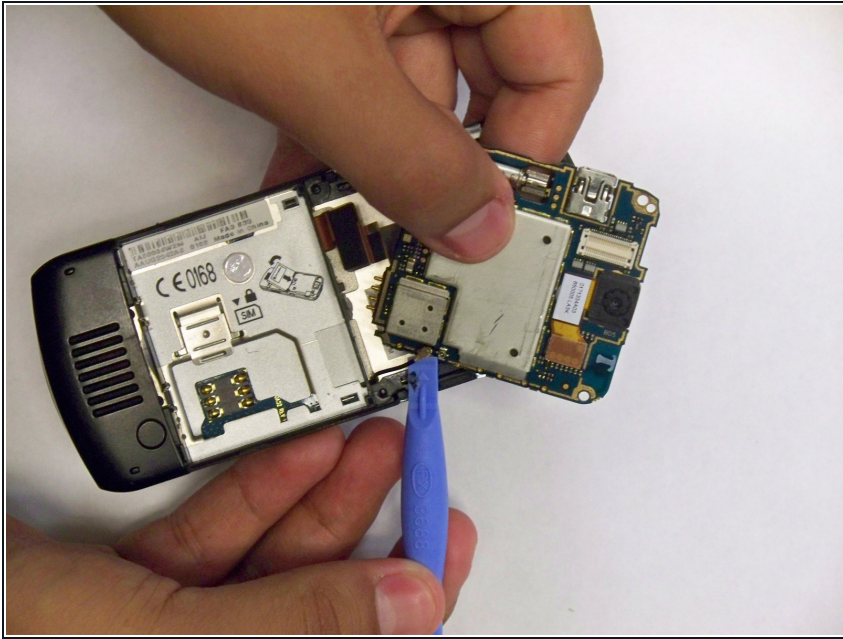
## Step 5



- Using the flat end of the iFixit Opening Tool, carefully disconnect the two connectors from their sockets on the motherboard.

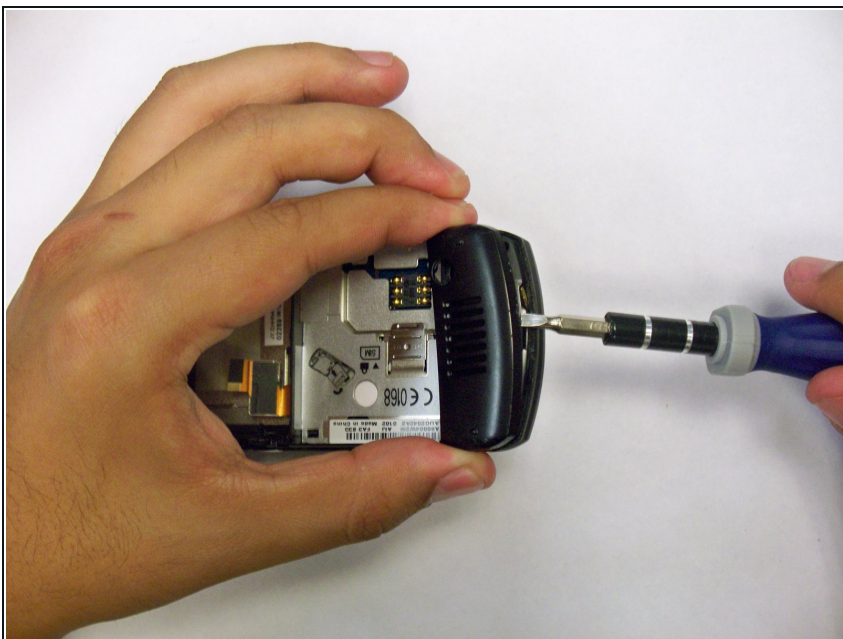


## Step 6



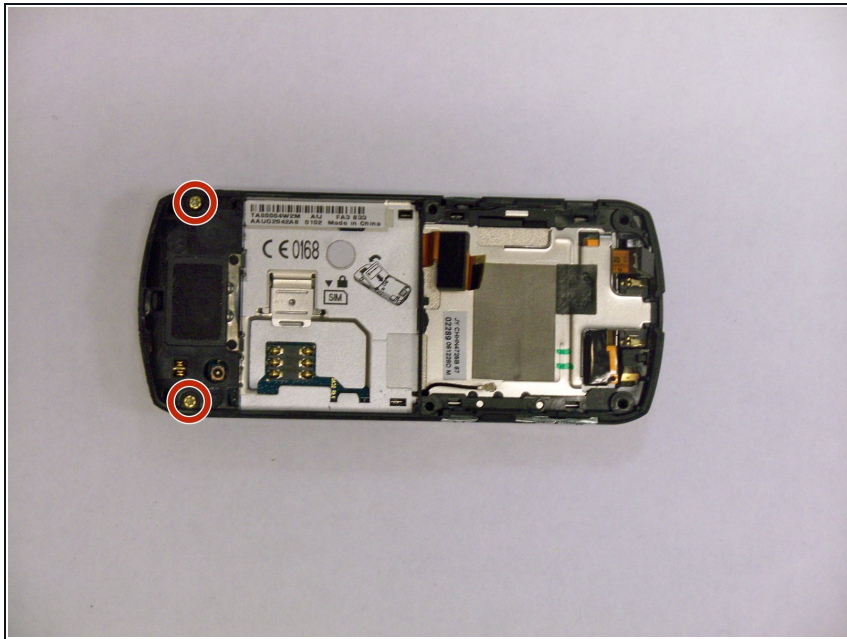
- Use the iFixit Opening Tool to pry the antenna cable connectors from the motherboard.
- Remove the antenna cable by pulling it out.

## Step 7



- At the bottom of the phone near the speaker, use the iFixit Opening Tool to remove the black plastic screw cover.
- Some force is required as the cover is attached by several clips. The first clips will be the hardest to dislodge.
- Under the cover are round plastic pieces that cover the microphone. Be careful not to lose them.

## Step 8



- Remove the two T6 screws that are now visible.

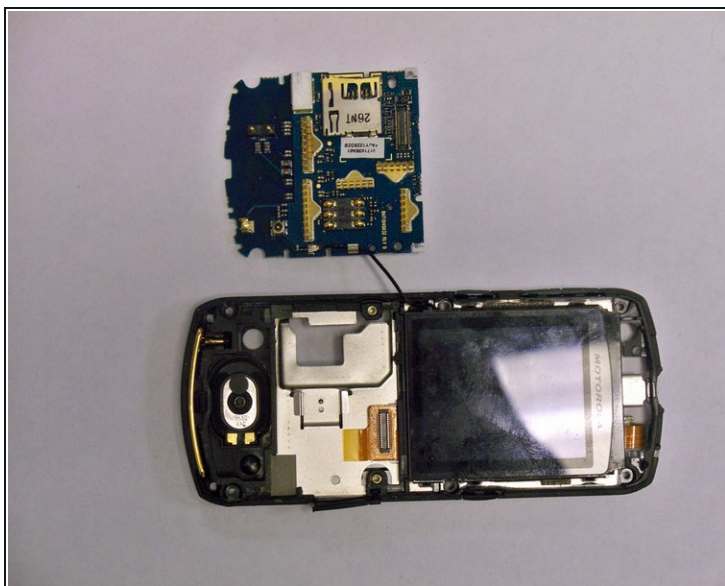
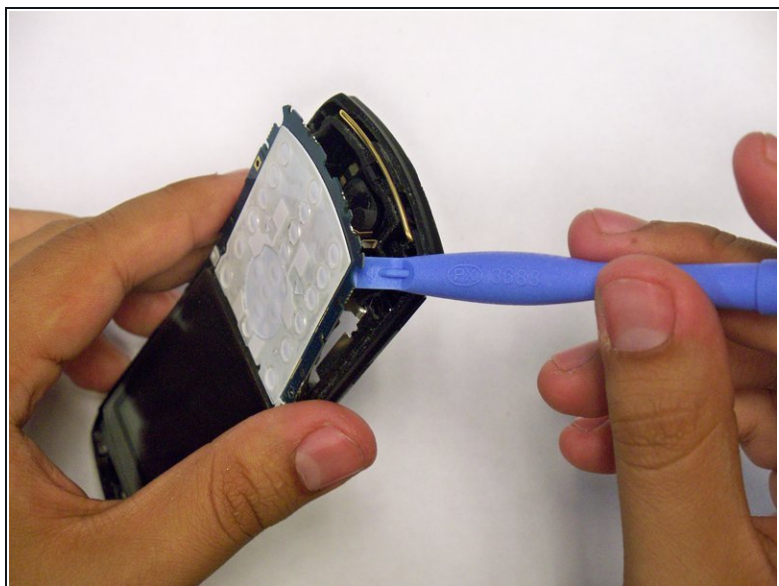
## Step 9



- Now turn the phone over. Insert the iFixit Opening Tool between the frame and the outer case on the side of the phone.
- Apply pressure using the iFixit Opening Tool to pry the case apart. Some force is required as the frame is attached by several clips. The first clip will be the hardest to dislodge.
- As soon as the first clip is dislodged, work the tool around the entire edge of the phone to carefully remove the remaining clips. This will avoid breaking the frame.
- Once the frame is completely separated from the outer case, remove the top numerical layer of the keypad by lifting it up.



## Step 10



- Carefully insert the flat end of the iFixit Opening Tool under the keyboard and pry it off.

To reassemble your device, follow these instructions in reverse order.