



Speakal iPanda Teardown

Lets take this little panda apart.

Written By: paulostool



INTRODUCTION

Just wanna see how this panda make his sound?



TOOLS:

- [64 Bit Driver Kit](#) (1)
-

Step 1 — Speakal iPanda Teardown



- The happy Panda

Step 2



- Flip it to find the screws.
- Unscrew the four Phillips #0 screws.

Step 3



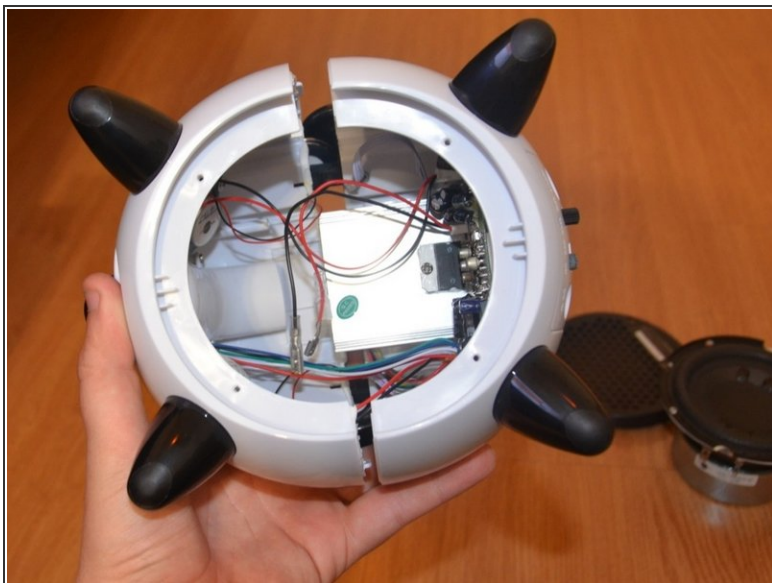
- Be careful with the cables of the subwoofer.

Step 4



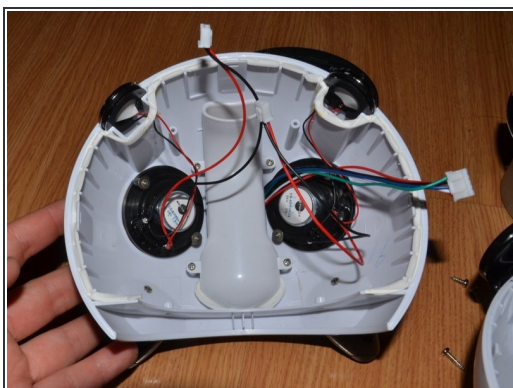
- He look like this on his insides.
- there is a little lock on the sides.
- Don't forget these screws too.

Step 5



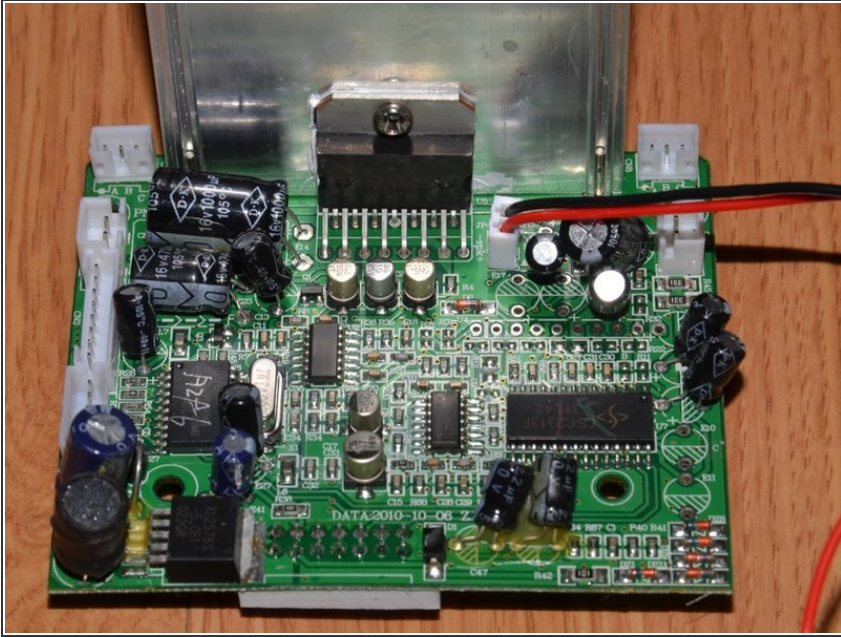
- Opening the sandwich.
- Don't forget the cables!

Step 6



- It doesn't look like a panda anymore.

Step 7



- Removing the board, it's all done.

Step 8



- Poor panda...