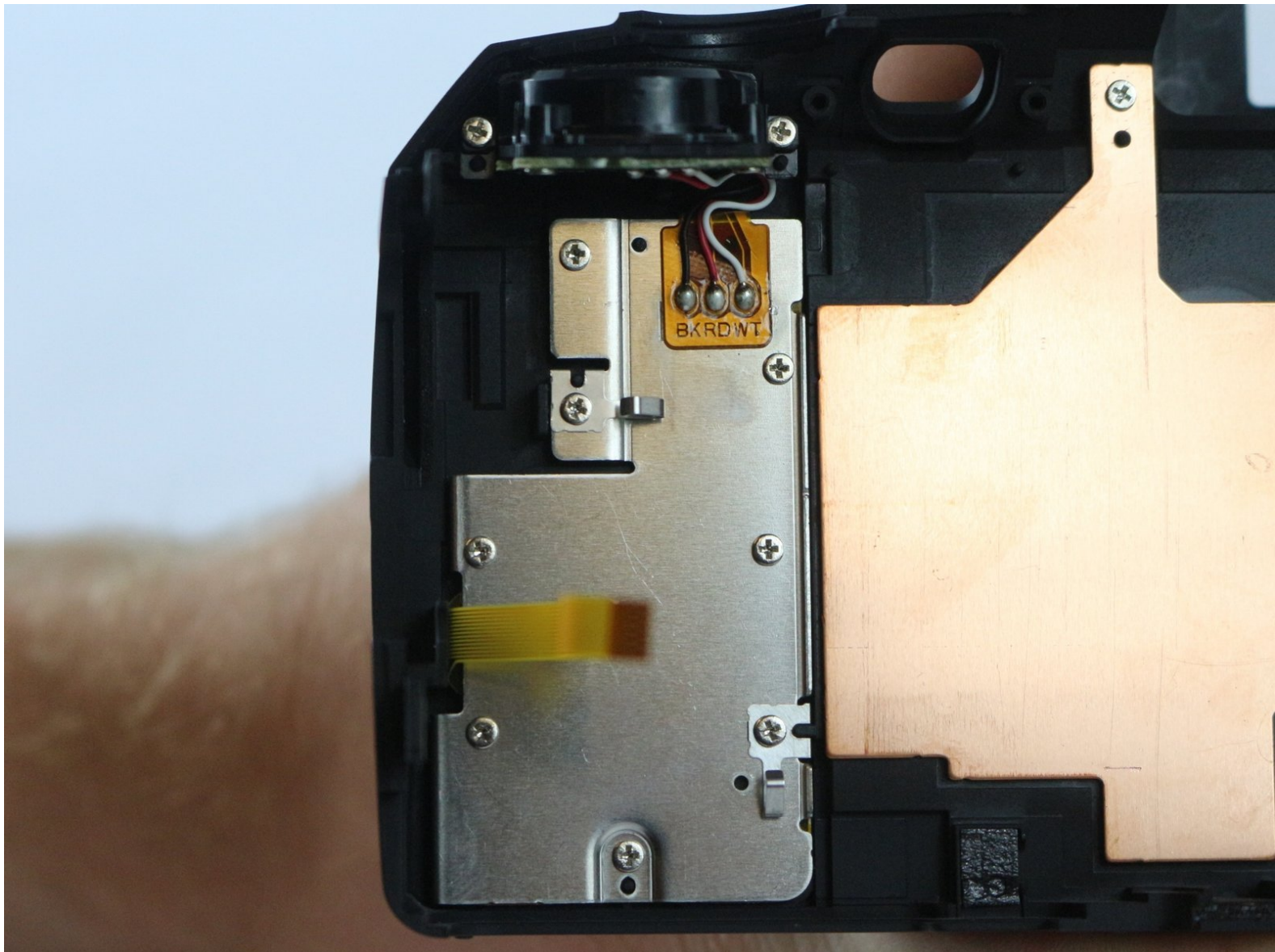




Fujifilm FinePix S1 Camera Interface Buttons Replacement

Replace the primary camera interface buttons to control your camera again.

Written By: Brandon Benavente



INTRODUCTION

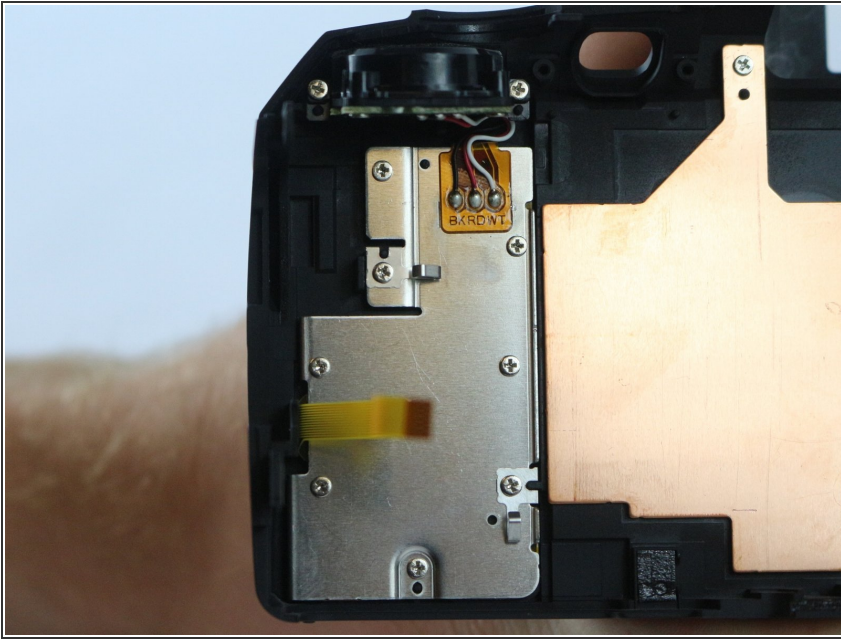
Removal of camera interface buttons includes removal of the back camera body and removal of the EVF/LCD button.



TOOLS:

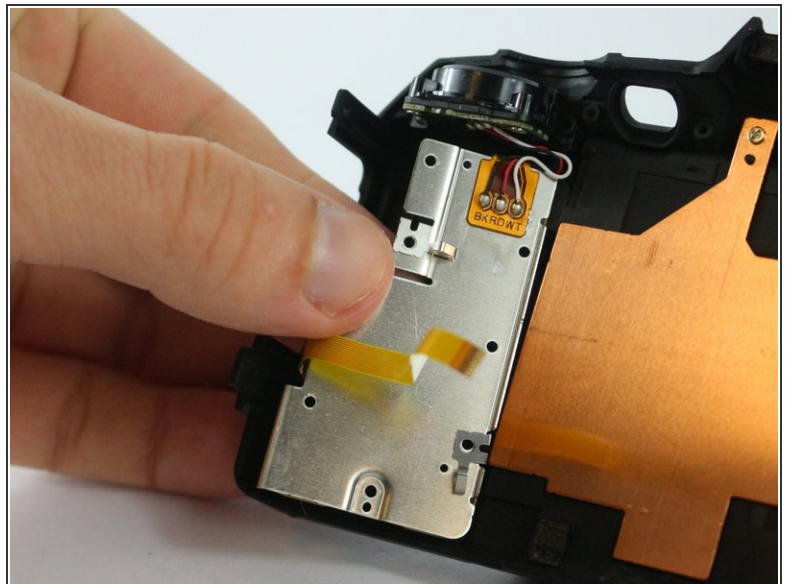
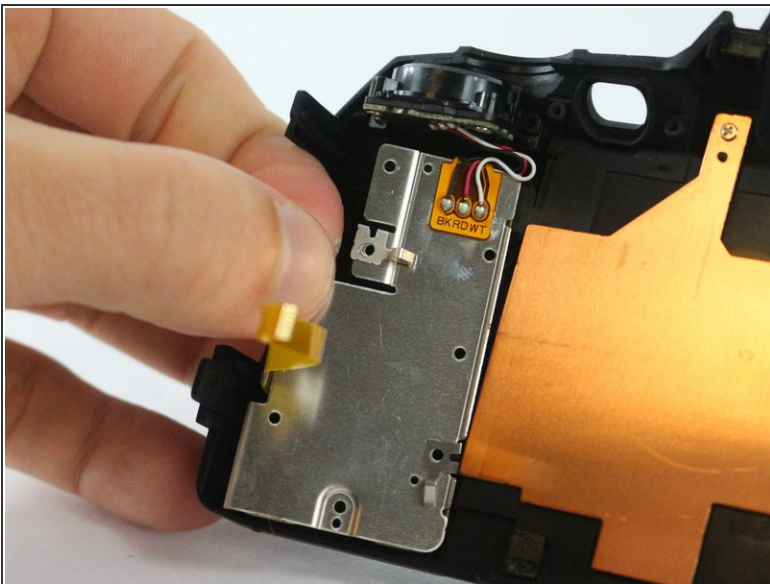
- [Essential Electronics Toolkit](#) (1)
-

Step 1 — Camera Interface Buttons



- Remove all 10 screws from the metal fitting inside the back of the camera.

Step 2



- Lift up on the metal fitting and pull it out of the camera.

To reassemble your device, follow these instructions in reverse order.