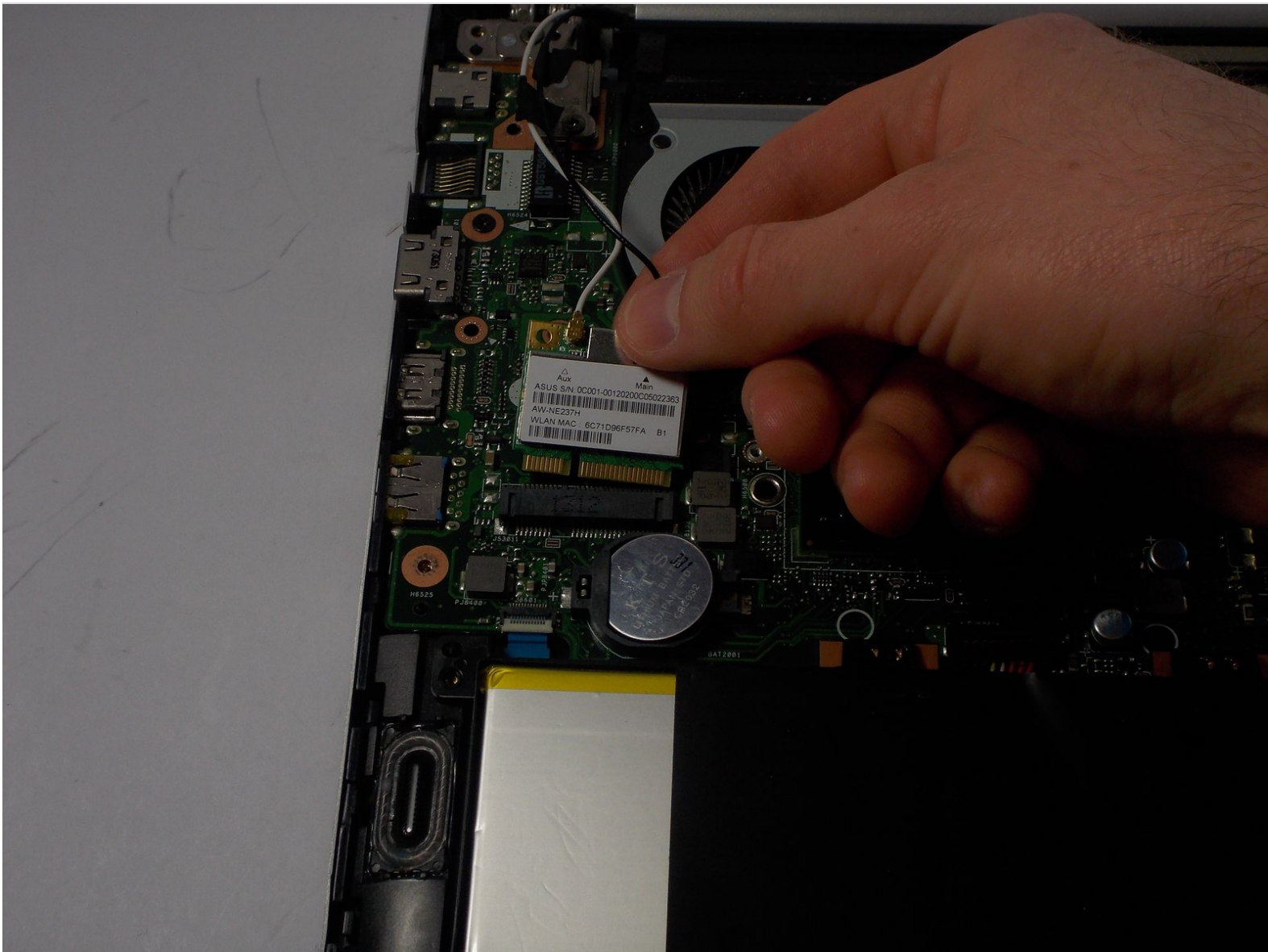




ASUS VivoBook S300CA-BBI5T01 Wi-Fi Card Replacement

A Wi-Fi card is an essential component for a wireless desktop computer. This card uses an antenna to communicate through microwaves. If the Wi-Fi card of a computer is not working properly, this guide will inform on how it should be removed.

Written By: Keith Rachels



INTRODUCTION

This guide's focus is on replacing the Wi-Fi card of a wireless desktop computer. Please follow the directions below to accomplish this result.



TOOLS:

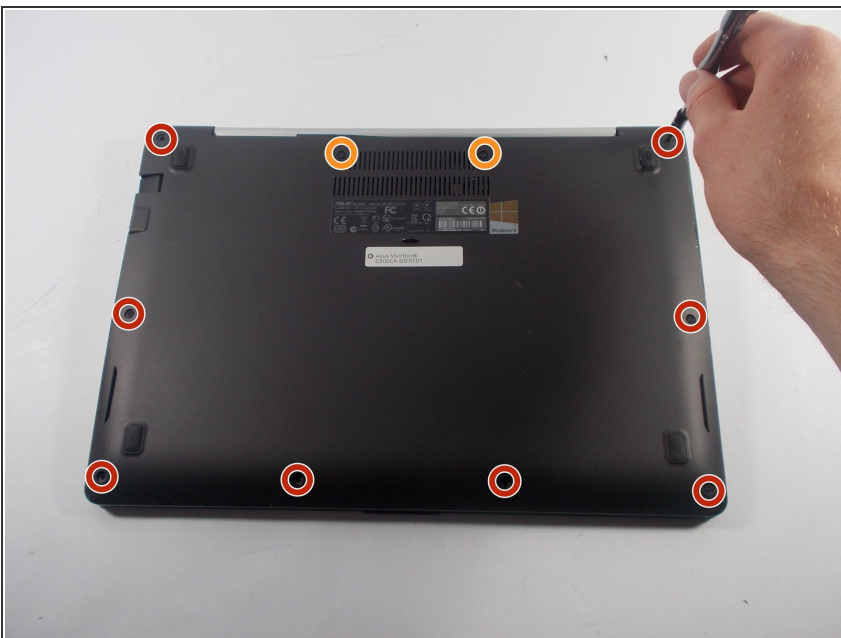
- [Phillips #0 Screwdriver](#) (1)
-

Step 1 — Wi-Fi Card



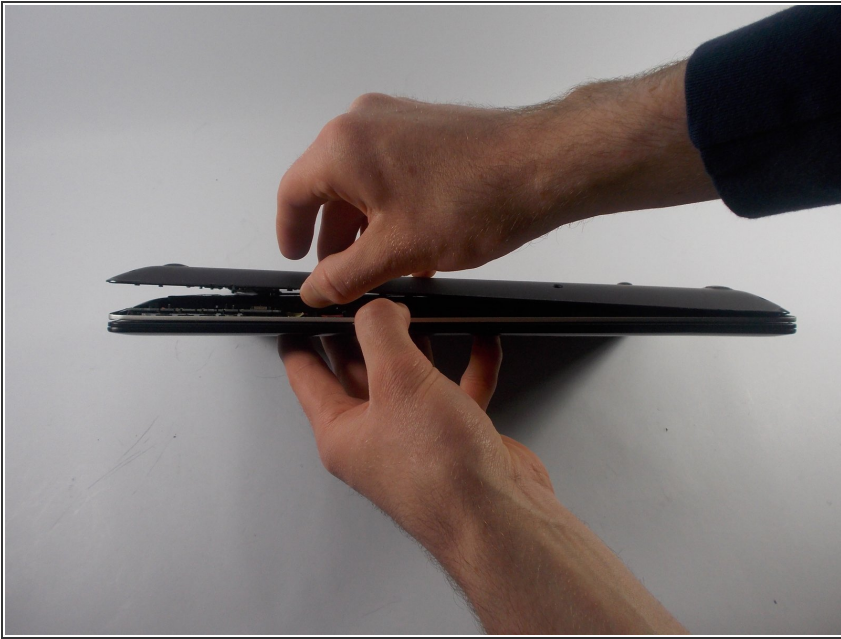
- Place the laptop upside down so that the bottom panel is facing upwards.

Step 2



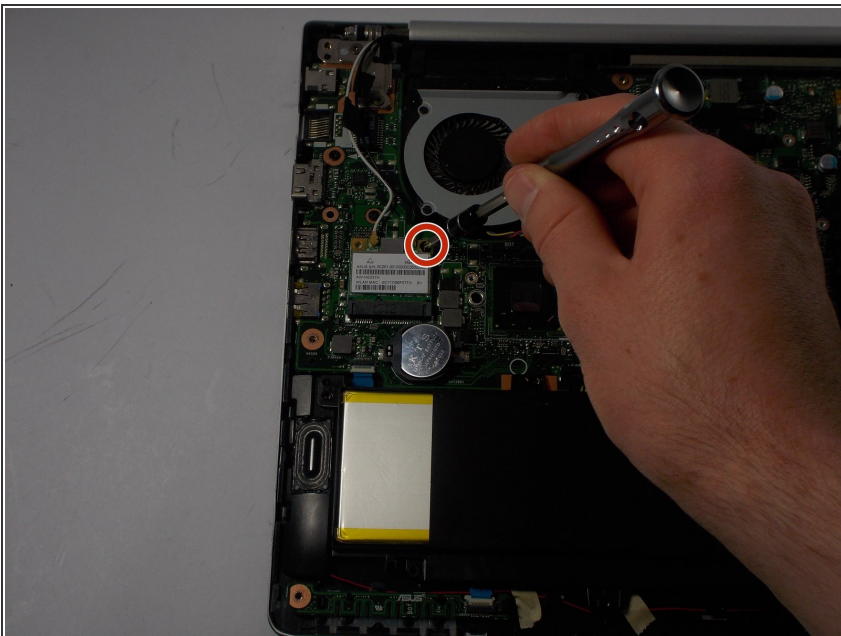
- Unscrew the following 10 screws
 - Eight 5 mm Phillips head screws
 - Two 10 mm Phillips head screws

Step 3



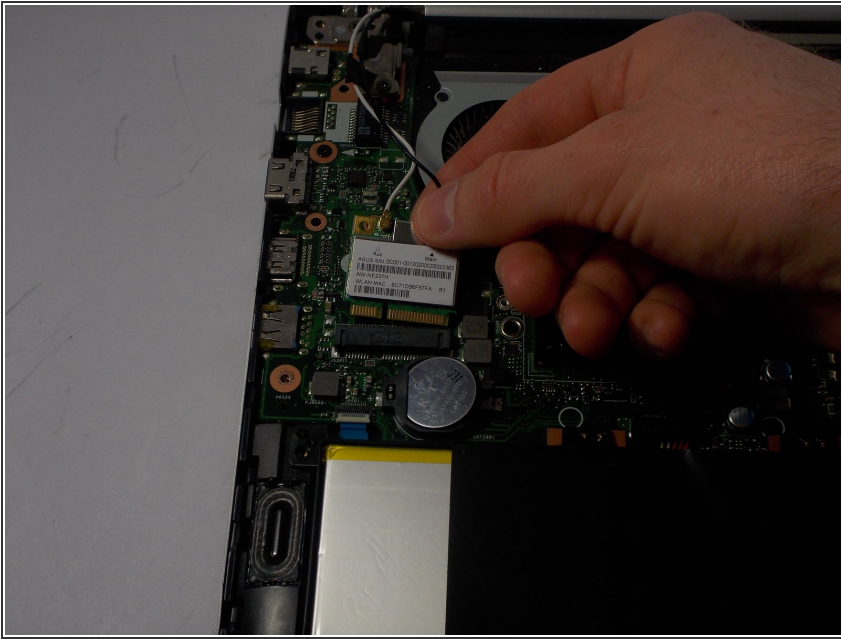
- Carefully peel the panel off of the bottom of the laptop.

Step 4



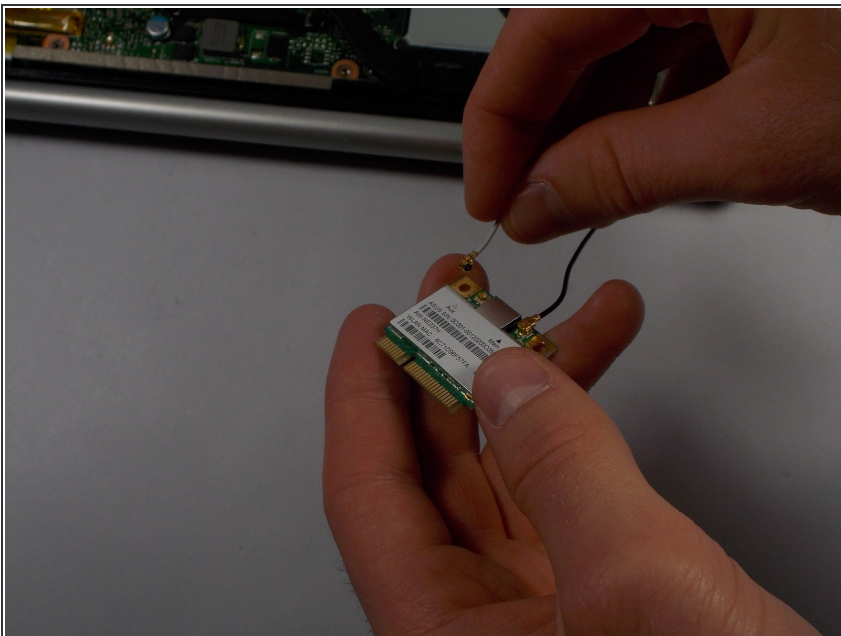
- Remove the one 3 mm Phillips head screw holding the Wi-Fi card in place.

Step 5



- Carefully slide the card out of its connection port by pulling it outward.

Step 6



- Remove the black and white antenna cable connector wires by carefully pulling upwards on them.
- ⓘ Note that the black wire connects to "Main" and the white wire connects to "Aux".

To reassemble your device, follow these instructions in reverse order.