



Keyboard Keys Replacement Guide

Installing missing keys on Gateway LT2104u Laptop.

Written By: Steven Park



INTRODUCTION

This guide will show two methods for installing a missing key on a Gateway LT2104u Laptop keyboard.



TOOLS:

- [Spudger](#) (1)
-

Step 1 — Keyboard Keys



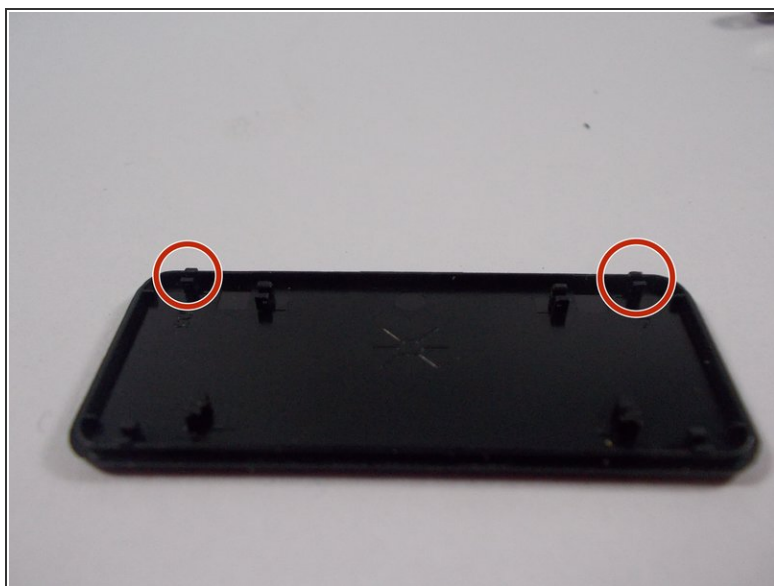
- i Before placing, check that the key is properly orientated. The letter side should be face up.
- Place the missing key onto the keyboard in the desired orientation. Once aligned, press firmly until the key snaps into place. This will not require large amounts of force. If it does not snap in, realign the key and try again.

Step 2



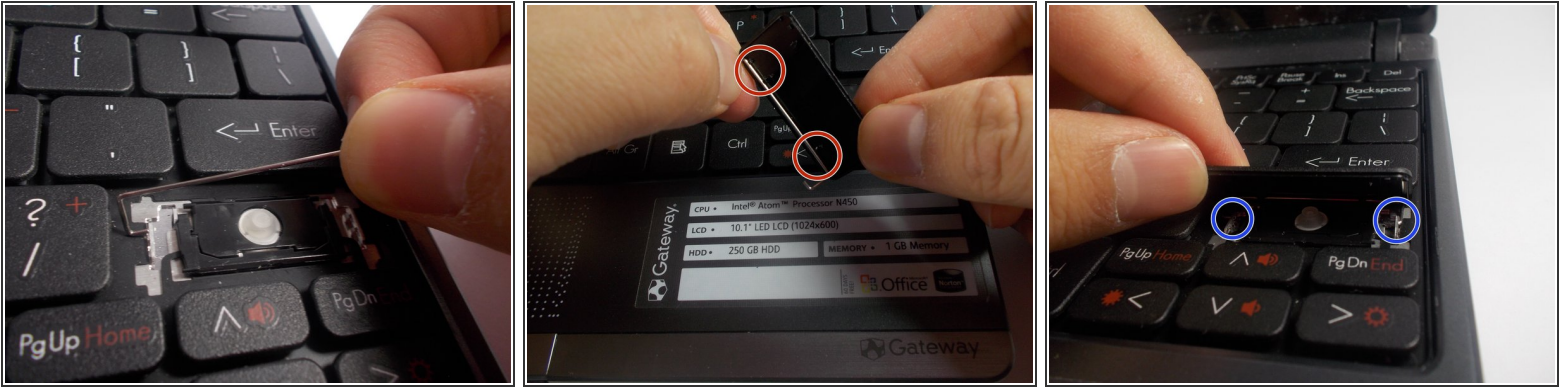
- Large rectangular keys need to be attached to the small metal bar to be attached properly. There are two ways to do this.


Step 3



- Before installing, the **plastic receivers** on the bottom of key need to be lined up properly with the metal pins.
- Option one is to line up the receivers with the metal bar from step 2 and apply pressure to attach.

Step 4



 Option two is to be used if the key cannot be attached without removing the metal bar.

- Pull the metal bar gently from one side to unseat it from the keyboard and allow it to be removed.
- Attach the metal bar to the receivers on the back of the key.
- Seat the metal bar into the hole on one side, and then the other. Then press firmly to attach the key.

To reassemble your device, follow these instructions in reverse order.