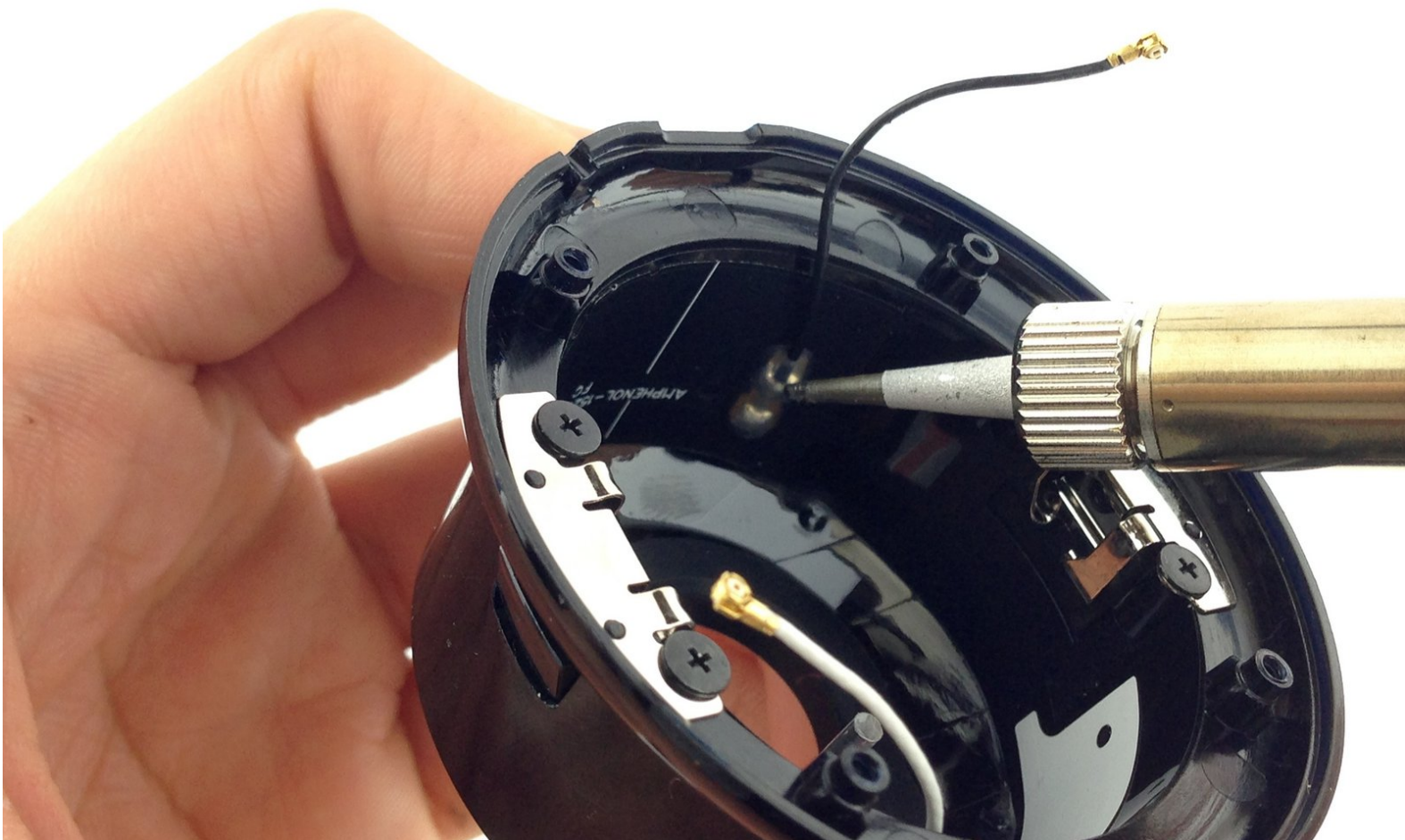




Nest Cam Wi-Fi Cable Replacement

A step by step guide on how to replace the Wi-Fi cable in the Nest Cam.

Written By: Jade Weiss



INTRODUCTION

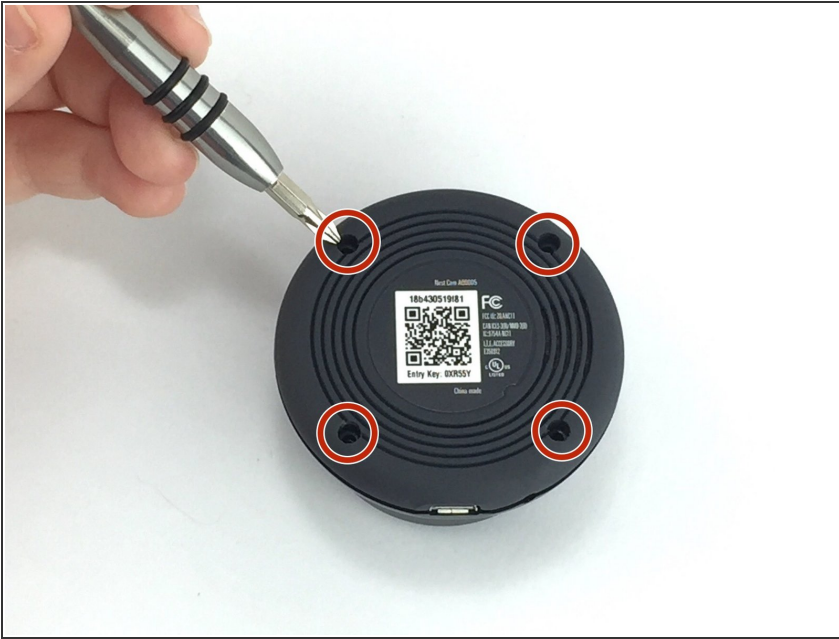
Without a steady Wi-Fi connection the Nest Cam is not functional. If your Nest Cam has bad reception or refuses to connect to the internet even after troubleshooting for connection problems, the Wi-Fi cable may need to be replaced.



TOOLS:

- [Tweezers](#) (1)
 - [Spudger](#) (1)
 - [Soldering Iron](#) (1)
 - [Phillips #000 Screwdriver](#) (1)
-

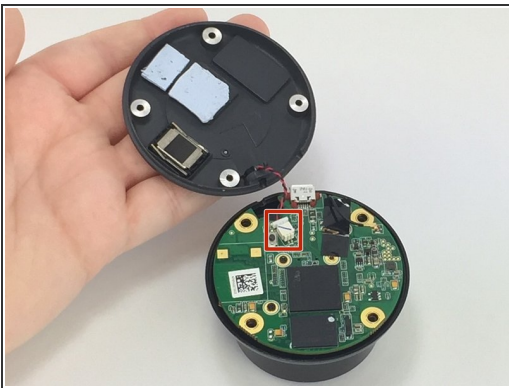
Step 1 — Wi-Fi Cable



- Remove the four 6 mm screws from the back panel with the J000 Phillips head screwdriver.

⚠ We suggest designated areas to keep track of all screws.

Step 2



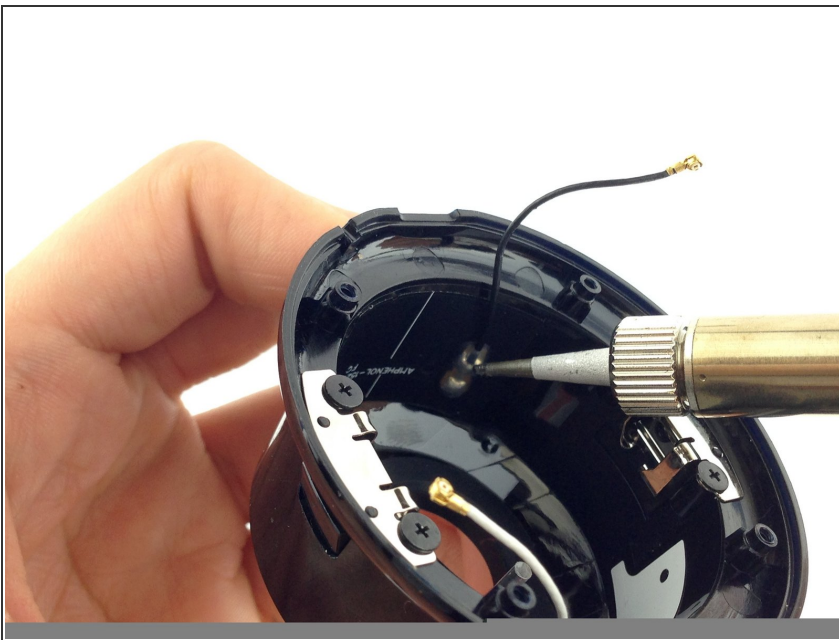
- Open the back panel completely to expose the inside of the Nest Cam.
- Using the tweezers, disconnect the red and black mic cable from the motherboard.

Step 3



- Disconnect the black Wi-Fi cable from the top of the motherboard with tweezers.
- Use a plastic spudger to lift the motherboard and camera up enough to expose and disconnect the white cable with the tweezers.
- Remove motherboard and camera completely from the housing.

Step 4



- Using a soldering iron, melt away the base of the Wi-Fi cable until it can be removed. [Use this guide for assistance with soldering.](#)

⚠ Ensure when you solder the new cable back on that all connector ends are positioned correctly.

To reassemble your device, follow these instructions in reverse order.