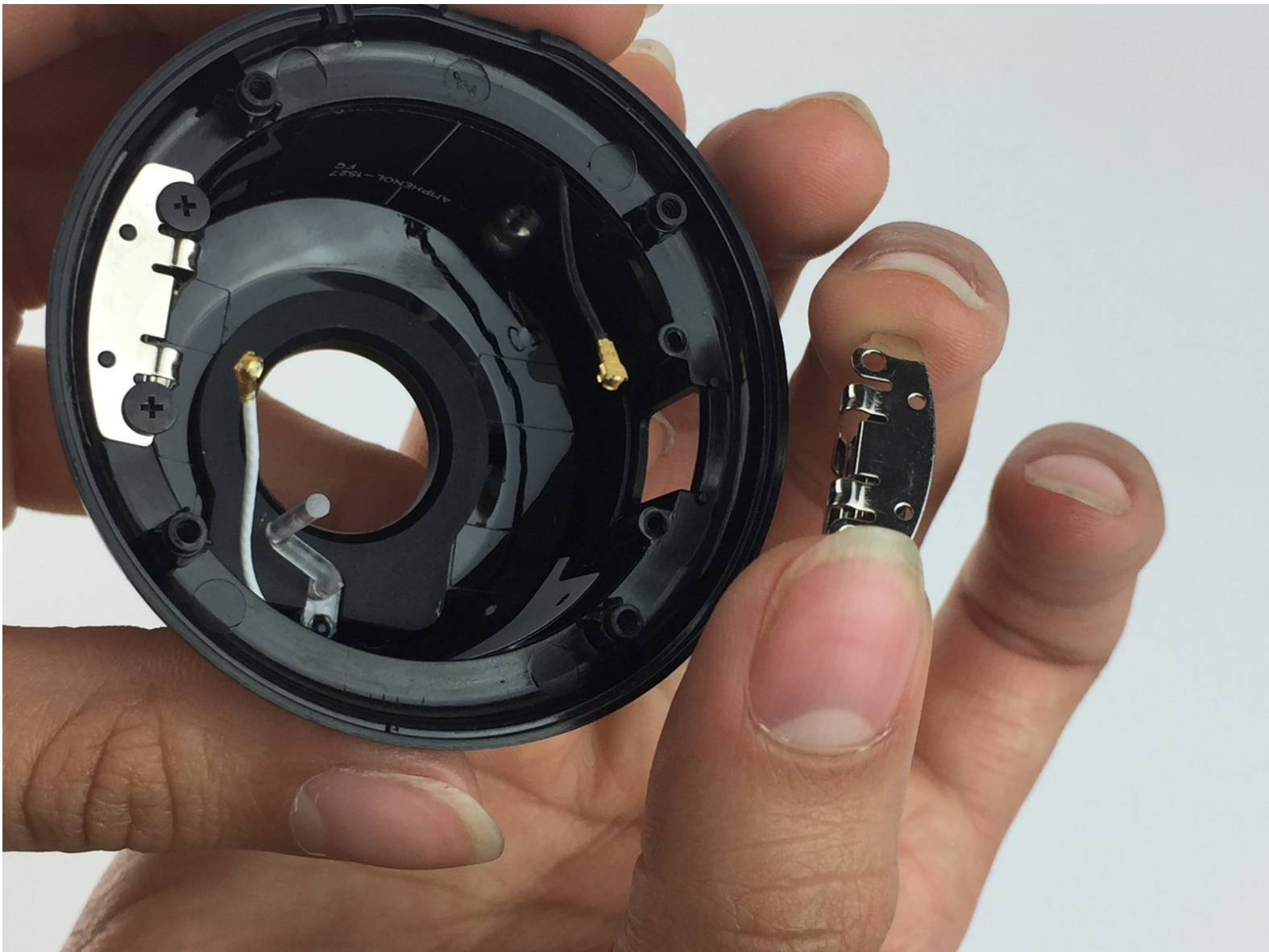




Nest Cam Side Snap Locks Replacement

A step by step guide on how to replace the side snap locks on the Nest Cam.

Written By: Lisa Langley



INTRODUCTION

The Nest Cam needs to be mounted on a stand for optimal positioning. If your Nest Cam refuses to secure itself to the stand or falls off often, the side snap locks may have weakened or broken and need to be replaced.



TOOLS:

- [Tweezers](#) (1)
 - [Spudger](#) (1)
 - [Phillips #000 Screwdriver](#) (1)
-

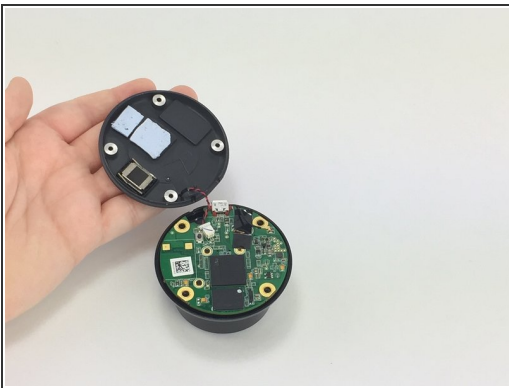
Step 1 — Side Snap Locks



- Remove the four 6 mm screws from the back panel with the J000 Phillips head screwdriver.

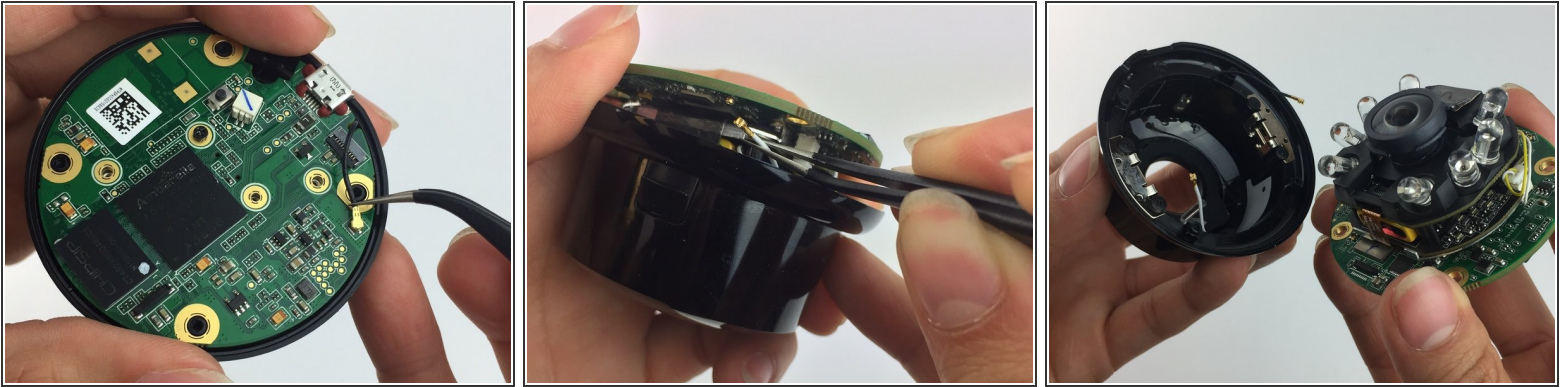
⚠ We suggest designated areas to keep track of all screws.

Step 2



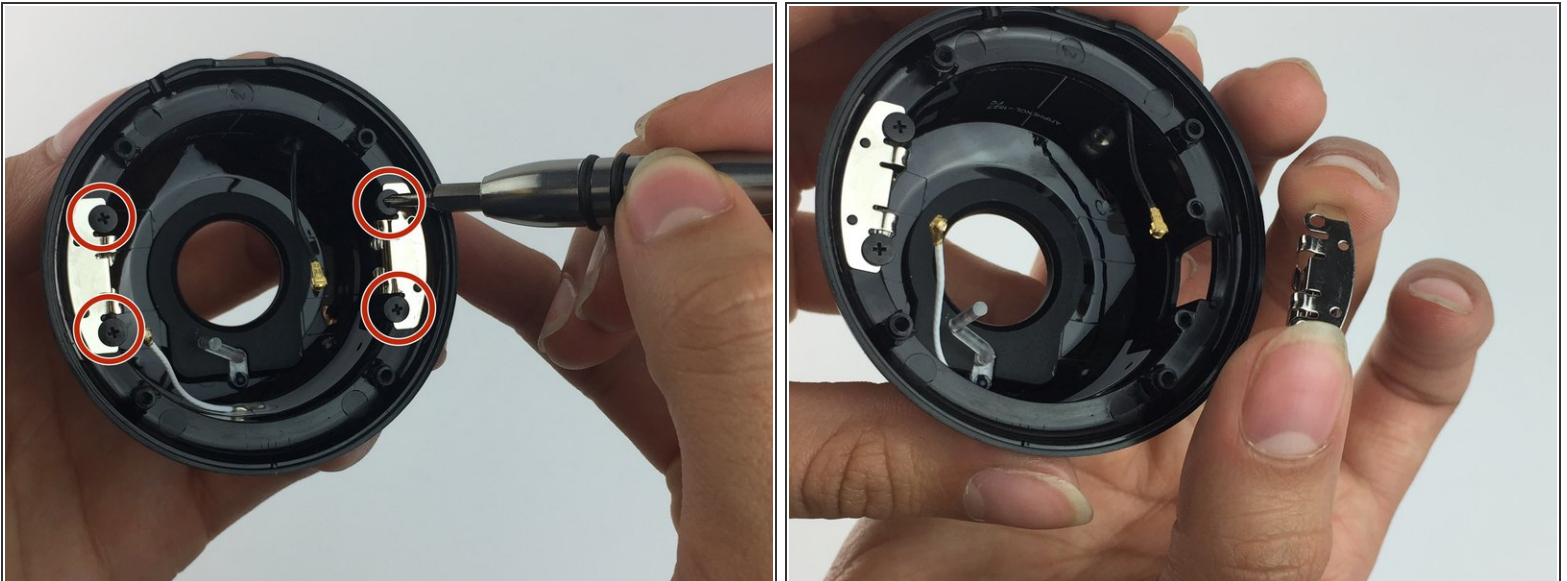
- Open the back panel completely to expose the inside of the Nest Cam.
- Using the tweezers, disconnect the red and black mic cable from the motherboard.

Step 3



- Disconnect the black Wi-Fi cable from the top of the motherboard with tweezers.
- Use a plastic spudger to lift the motherboard and camera up enough to expose and disconnect the white cable with the tweezers.
- Remove motherboard and camera completely from the housing.

Step 4



- Remove the four 3 mm Phillips #J000 screws from the side snap locks. Remove the old side snap locks and place the new side snap locks.
- ☑ Make sure everything lines up for the screws.

To reassemble your device, follow these instructions in reverse order.