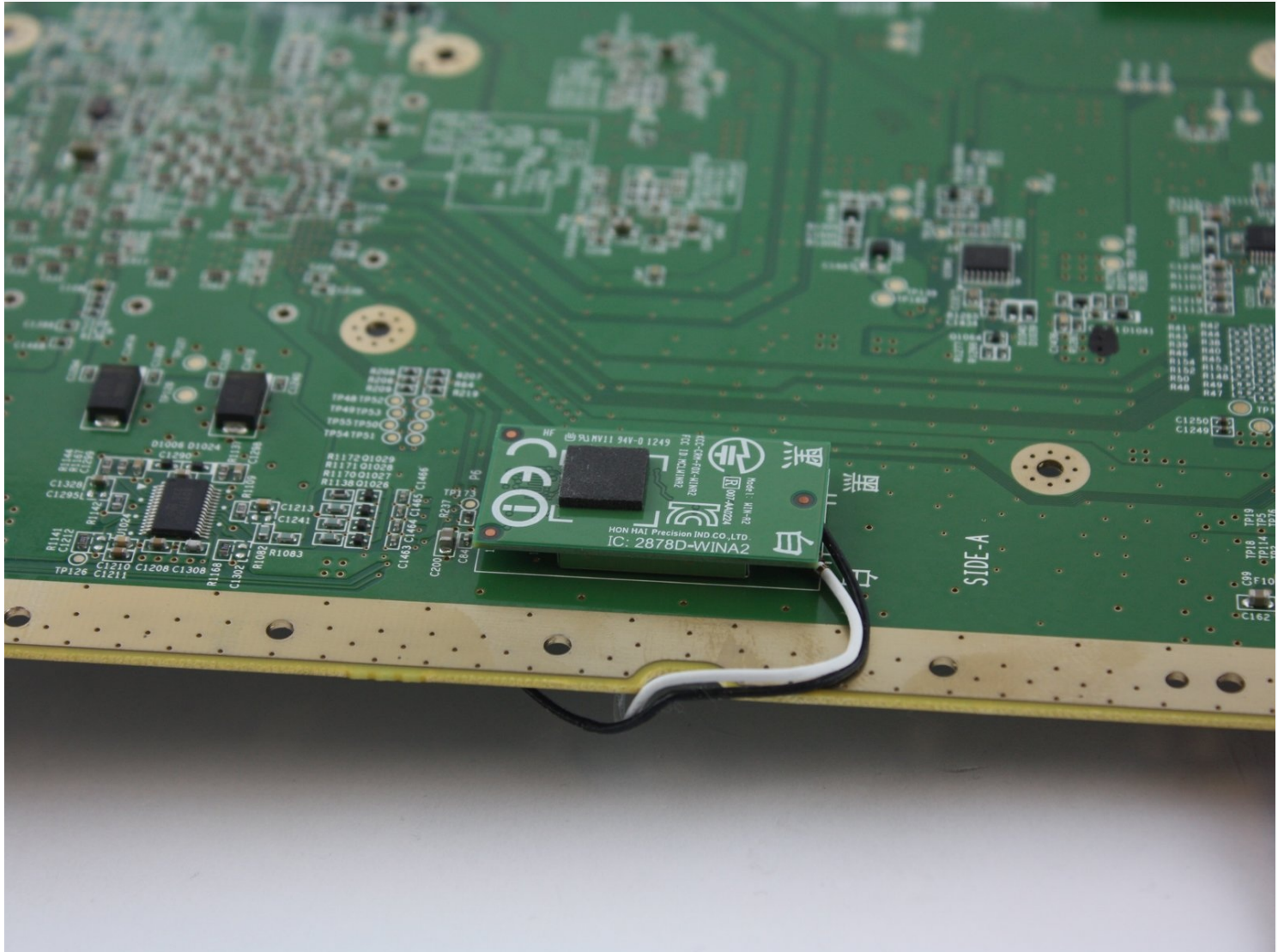




Nintendo Wii U Wireless Module Replacement

The wireless module is a component in the Wii...

Written By: Emily Vasquez



INTRODUCTION

The wireless module is a component in the Wii U's wireless connectivity with the gamepad. This guide will show you how to replace this important component of the Wii U.

TOOLS:

[Spudger](#) (1)
[Phillips #00 Screwdriver](#) (1)
[Phillips #0 Screwdriver](#) (1)
[Tri-point Y0 Screwdriver](#) (1)
[Phillips #1 Screwdriver](#) (1)
[Y1 Tri-point Screwdriver](#) (1)

PARTS:

[Nintendo Wii U Faceplate](#) (1)

Step 1 — Console Outer Case



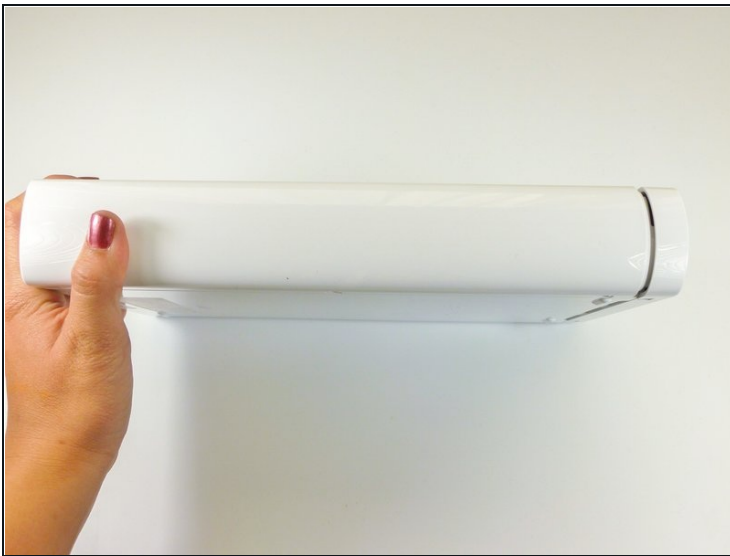
- With the bottom of the console facing up, remove the following 6 screws hidden underneath the white square stickers:
 - Three 5.1mm Phillips #000 screws
 - Two 6.1mm Tri-wing Y0 screws
 - One 13.2mm Tri-wing Y1 screw

Step 2



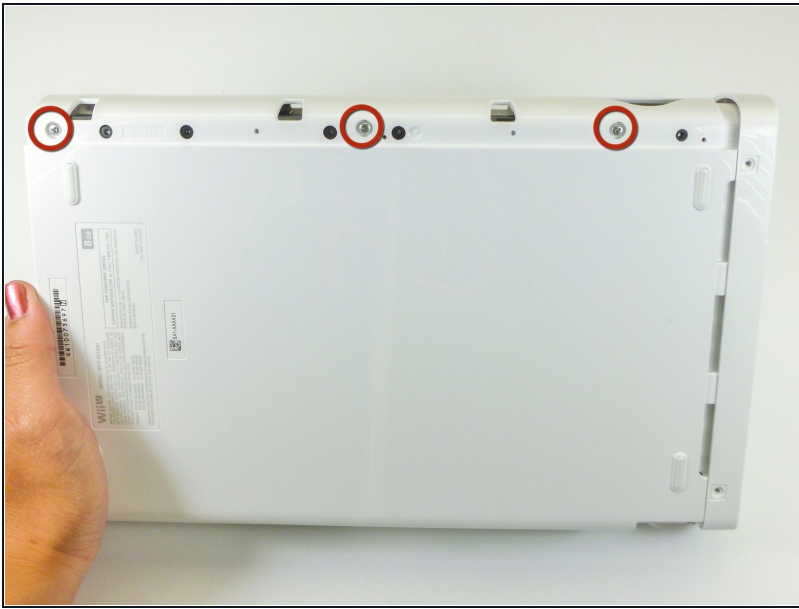
- Rotate the console 180 degrees so that the exhaust vents are facing you.
- Remove the two 7.1mm Phillips #00 screws.

Step 3



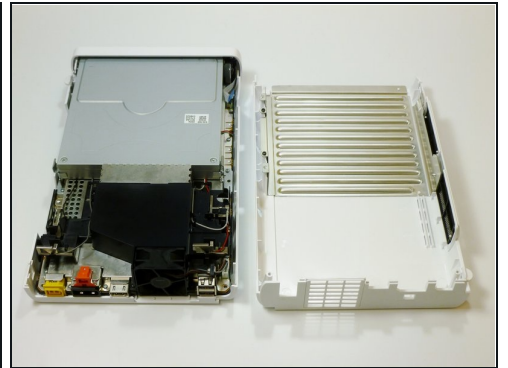
- On the side opposite of the exhaust vents, slide the cover faceplate towards the back of the console and pull upwards to release it.

Step 4



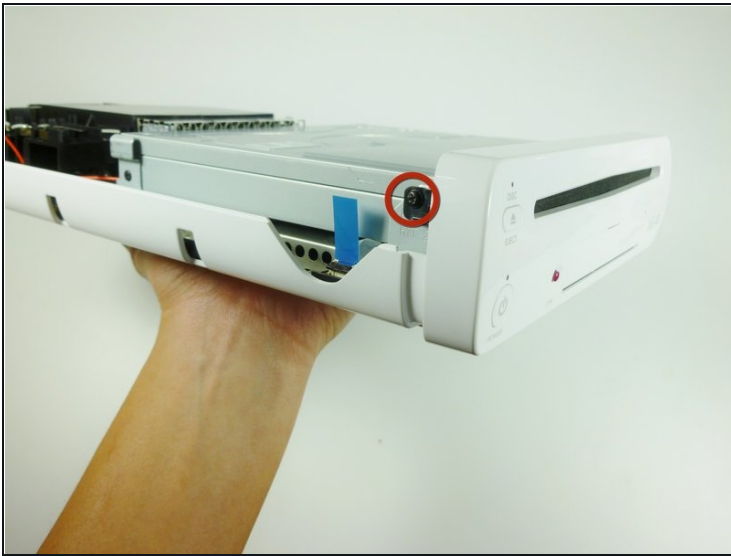
- On the bottom of the console beneath the previously removed faceplate, remove the three 13.2mm Tri-wing Y1 screws.

Step 5



- On the back of the console, lift up and release the main top cover.

Step 6 — Front Faceplate



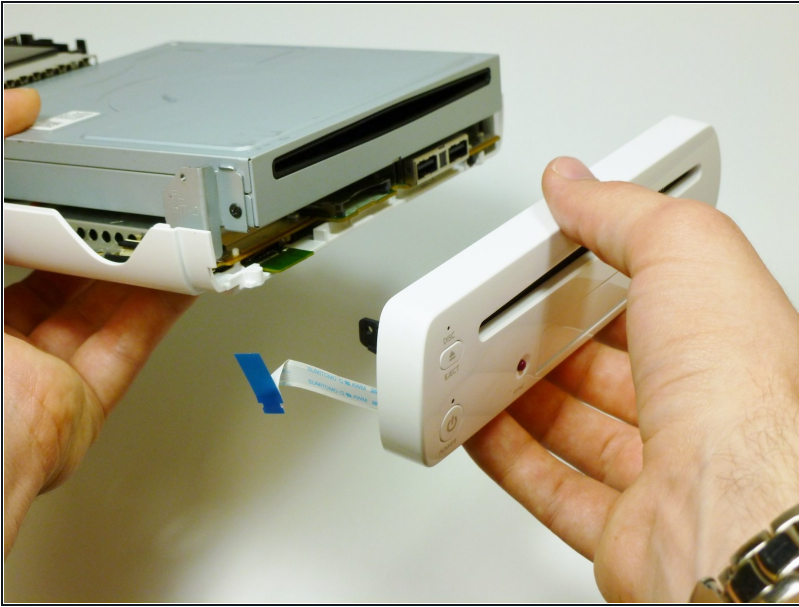
- Rotate the device so that the front plate is facing you.
- On each side of the console, remove the 3.5mm Phillips #0 screw connecting the DVD drive to the faceplate.

Step 7



- Rotate the device so that the front plate is on the right side and the ribbon cable is visible.
- The ribbon cable is connected to the system by a latch which holds in the blue tab. Flip this latch up to unlock it.
- Lift up on the blue tab to release the ribbon cable.

Step 8



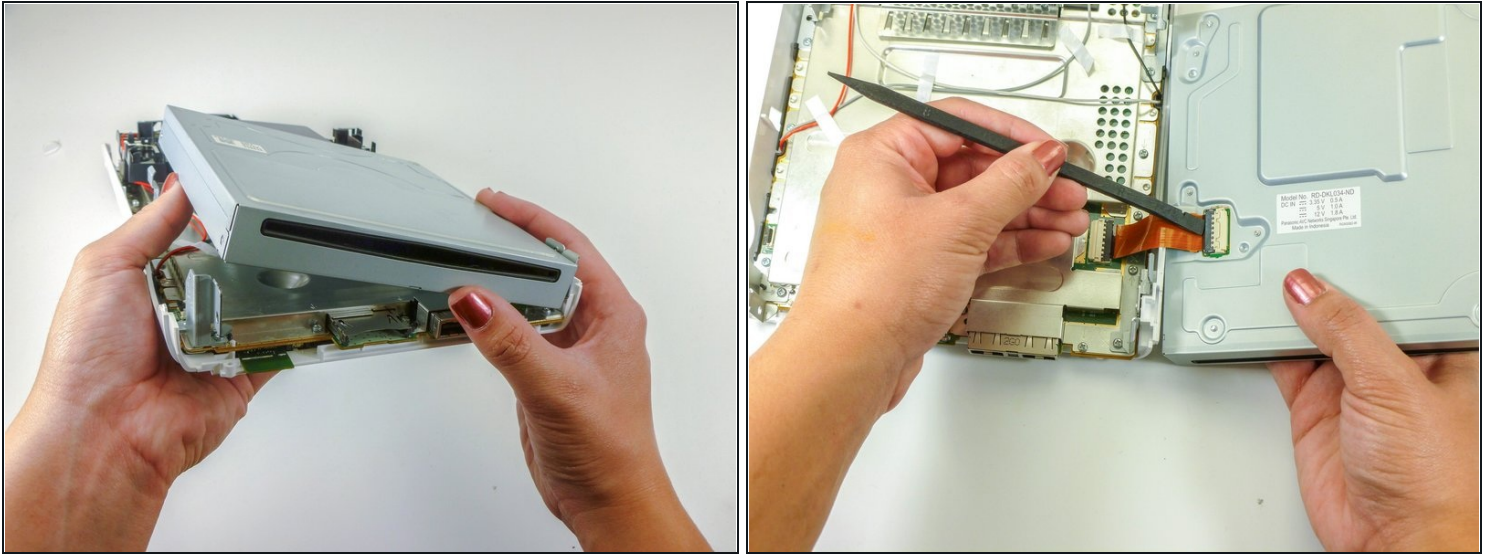
- Remove the front faceplate.

Step 9 — DVD Drive



- On each side of the DVD drive, remove the two 4.6mm Phillips #0 mounting screws.

Step 10

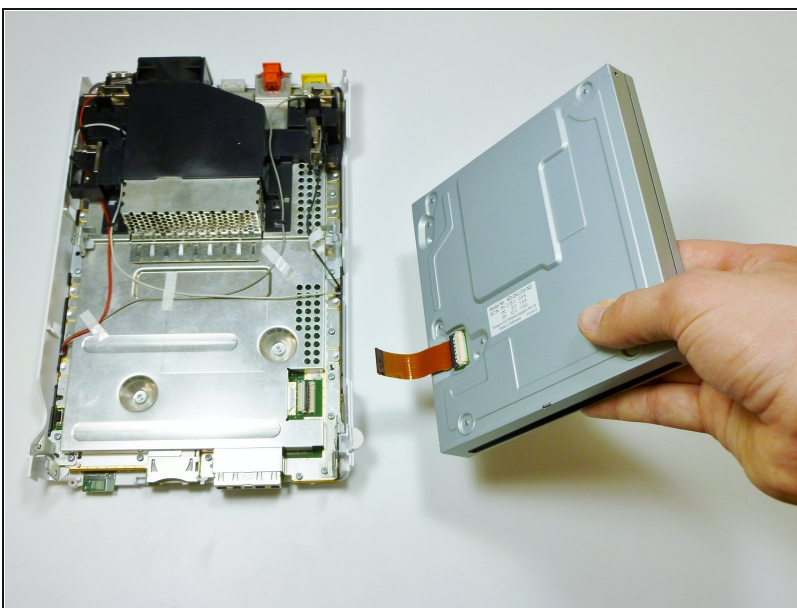


- Rotate the device so that the disc drive slot is visible.

⚠ A ribbon cable is attached to the bottom right side of the disc drive. The ribbon cable can rip if it isn't removed properly.

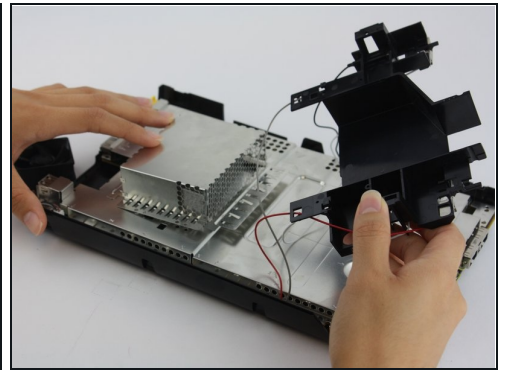
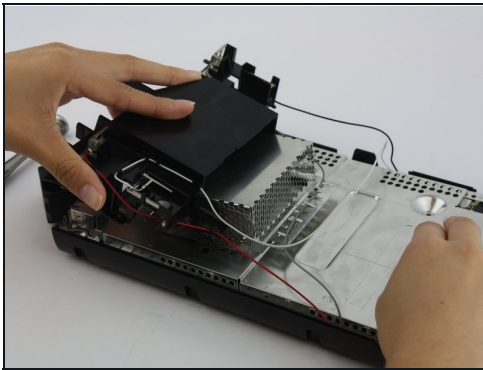
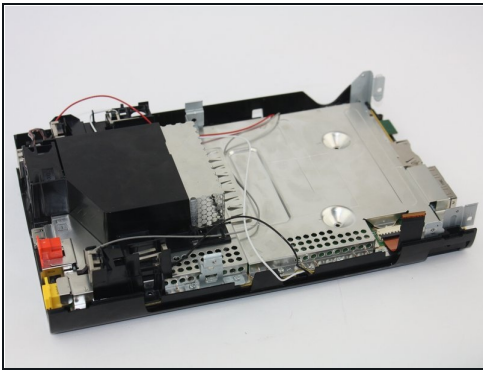
- Lift the disc drive out of the mount and turn over to the right so it lies like a book.
- Use a spudger to release the ribbon cable.

Step 11



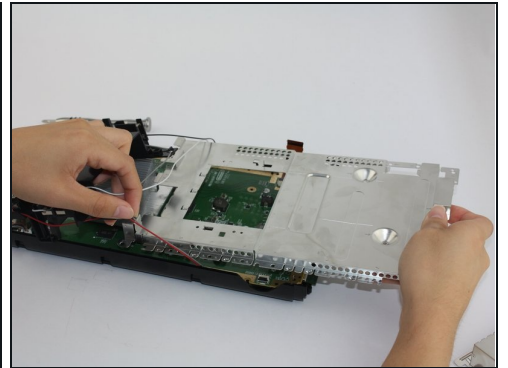
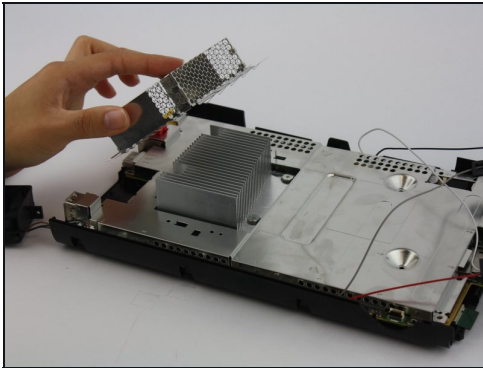
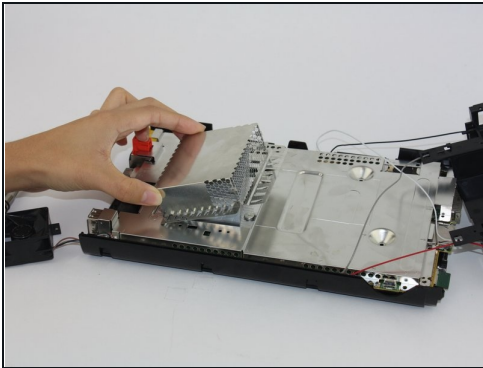
- Remove the disc drive.

Step 12 — Motherboard



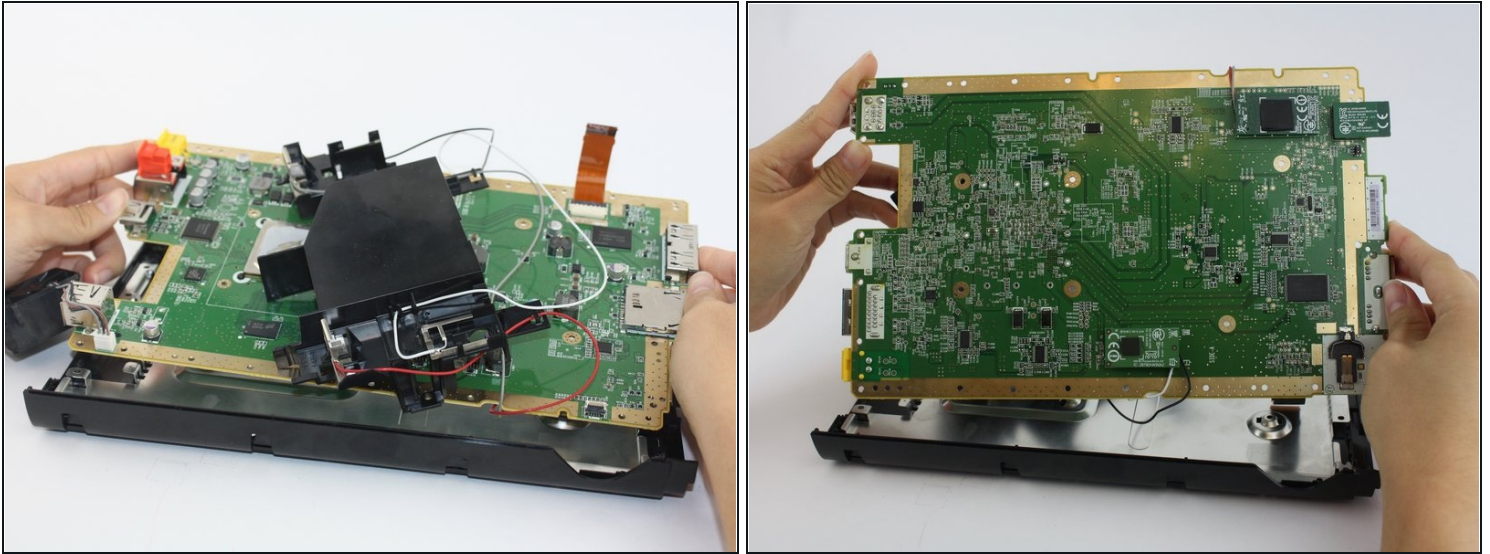
- Remove the black plastic shielding by unscrewing connecting screws with a Phillip's Head screwdriver.
- ① You will have to carefully adjust the antenna cables out of the way in order to proceed comfortably.

Step 13



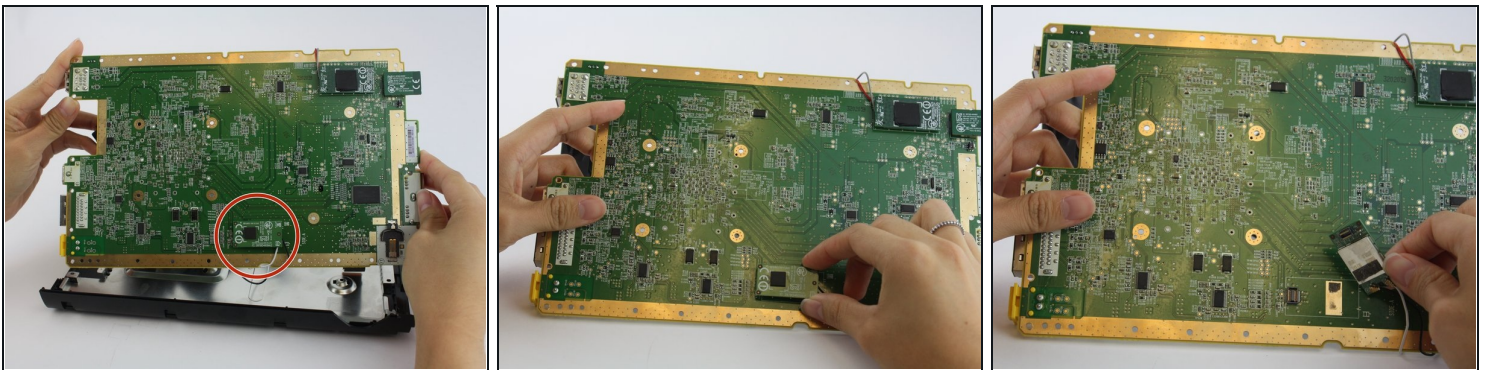
- The metal cap does not require unscrewing and should lift up with ease.
- Unscrew all the screws that outline the perimeter of the board using a Phillips Head (PH1) screwdriver.
- Remove the silver shielding plate once all screws are removed. Be careful when pulling it under the affixed antenna cables.

Step 14



- At this point, the motherboard should easily separate from the lower tray.

Step 15 — Wireless 5ghz Module



- Flip the motherboard over to view the underside where the Wii U's wireless modules are located. The Bluetooth module is circled in red.
- This module is affixed with strong adhesive, so in order to remove it you will need to wiggle the module with slight force for a couple of minutes.

To reassemble your device, follow these instructions in reverse order.