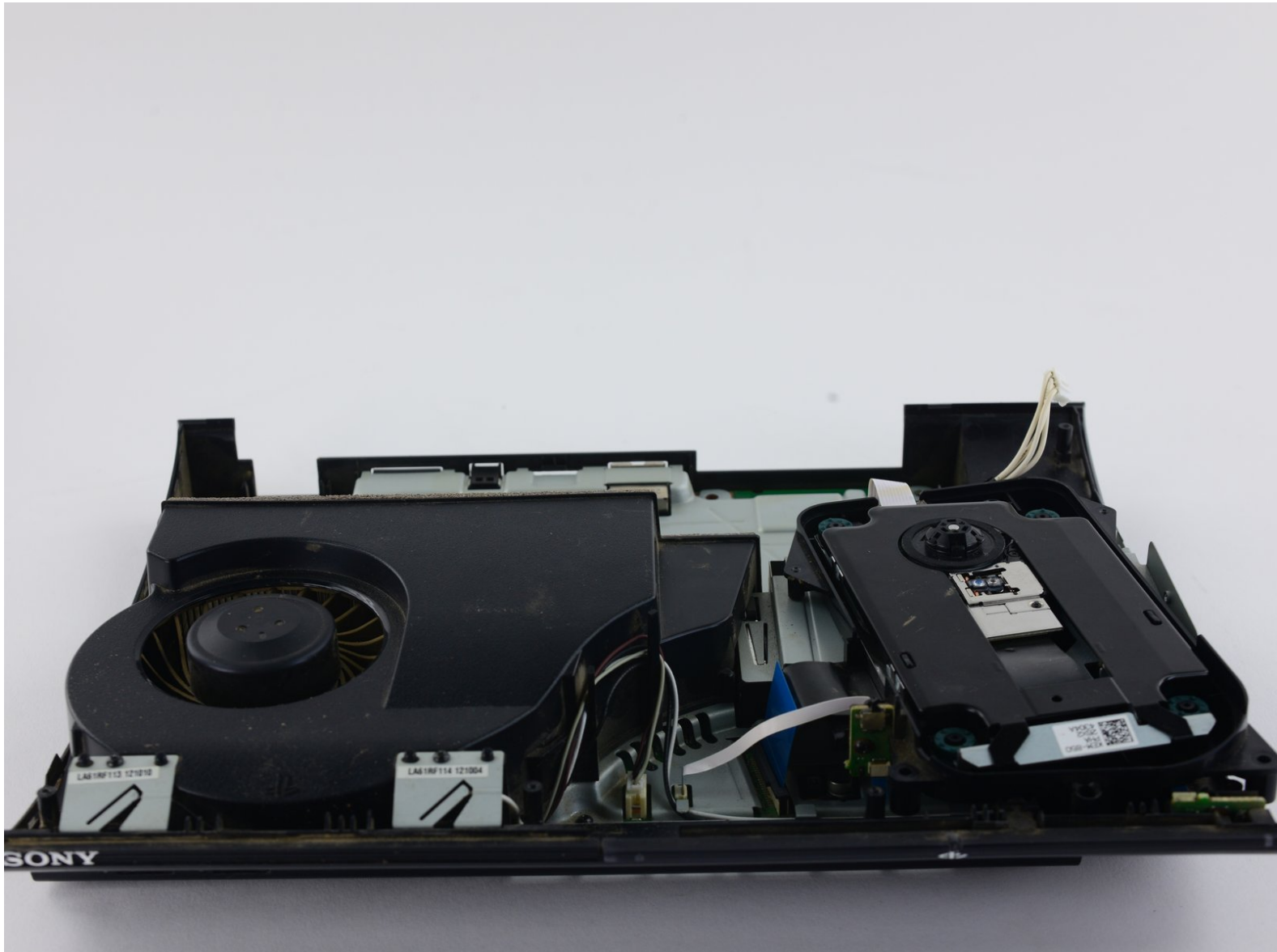




PlayStation 3 Super Slim Optical Drive Replacement

Faulty optical drive? This guide will walk you through replacing your PS3's optical drive.

Written By: Joseph O'Connor



INTRODUCTION

This guide starts with the process of opening up the Playstation 3 Super Slim and moves on to remove the optical drive in its entirety. If your PlayStation 3 Super Slim is not reading disks properly or you know that the problem with your device is due to a faulty optical drive, consider following these steps to replace it. Before following the steps to replace the optical drive, be sure that you have all the correct tools necessary, enough time to do the job carefully, and an uncluttered and clean workspace. When following the steps, make sure that you read them carefully and do not put too much pressure on the various parts of your device so that they do not break. Good luck with the replacement process and take your time!



TOOLS:

- [Phillips #1 Screwdriver](#) (1)
- [iFixit Opening Tools](#) (1)
- [T8 Torx Security Bit Screwdriver](#) (1)



PARTS:

- [PlayStation 3 Super Slim PPX-001 Motherboard & Paired Optical Drive](#) (1)

Step 1 — Power Supply Unit



- Remove the side HDD bay cover by sliding the panel towards the back of the device.

i The bay cover is found on the right side of the device.

Step 2



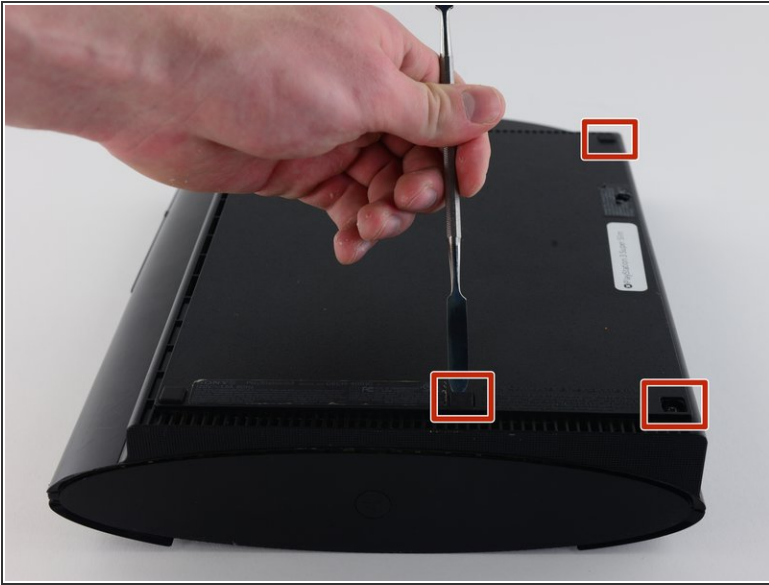
- Remove all three black 9.8mm long screws with a T-8 security screwdriver.
- Remove the blue 7.9mm long screw with a Phillips #1 screwdriver.

Step 3



- Pull on the tab to remove the HDD.
- ⓘ The HDD should be removed and stored carefully to prevent damage to data.

Step 4



- On the bottom of the device, pry out the three rubber feet covers with the metal spudger.
- Remove the four black 36.3mm long screws underneath with a Phillips #1 screwdriver.
- ⓘ One screw is located underneath the warranty sticker. This sticker can either be peeled off or punctured through with a screwdriver.

Step 5



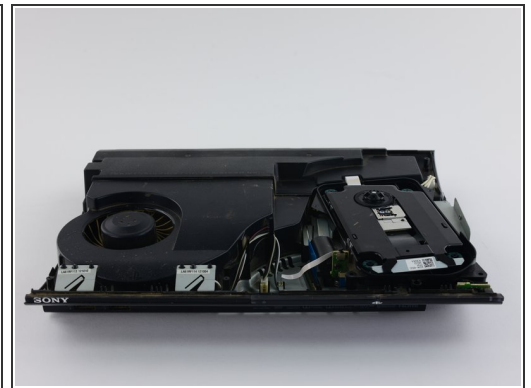
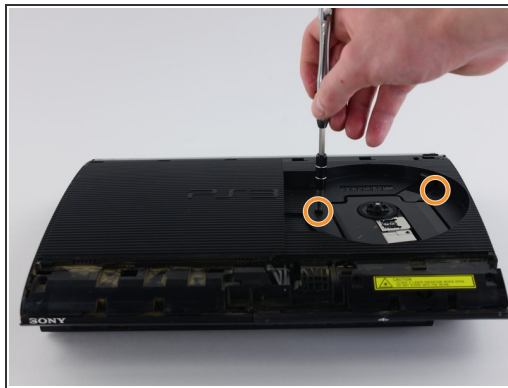
- On the top of the device, unlatch the hook on the furthest right beneath the front panel, lift the panel slightly and apply pressure.
 - Unlatch the second right-side hook by sliding a plastic opening tool in the marked area.
 - Slide the panel to the left to unlatch the rest of the hooks.
- i** This is probably the most difficult part of the procedure. If you cannot unlatch the hook on the front panel, you can attempt to pry all the hooks off. However, do this at your own risk, as these hooks break easily.

Step 6



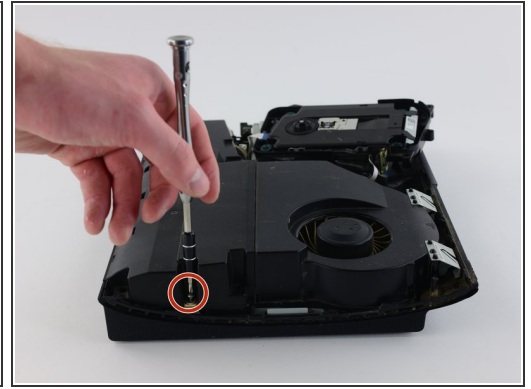
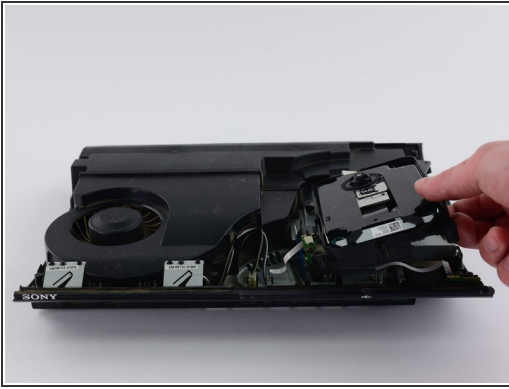
- Remove the back panel by pressing down the tab on the right side of the device, and sliding the panel to the left.

Step 7



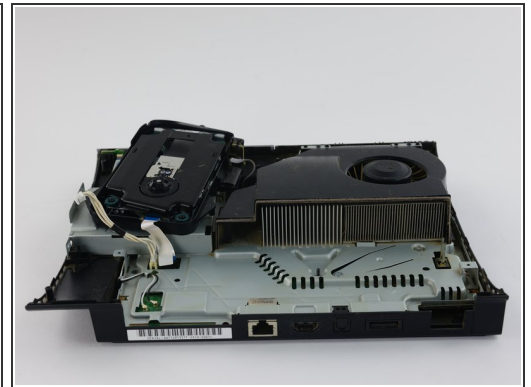
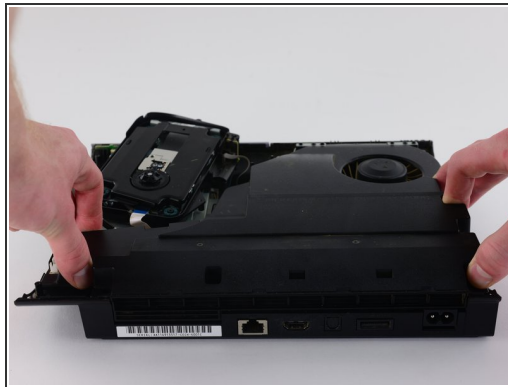
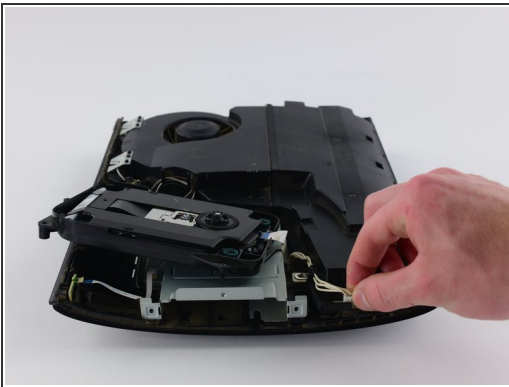
- Remove the five silver 20.8mm long screws with a Phillips #1 screwdriver.
- Remove the two black 9.9mm long screws in the disc reader with a T-8 security screwdriver.
- Remove the top black plastic shell.

Step 8



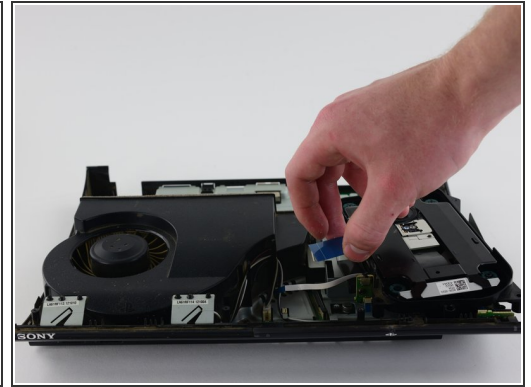
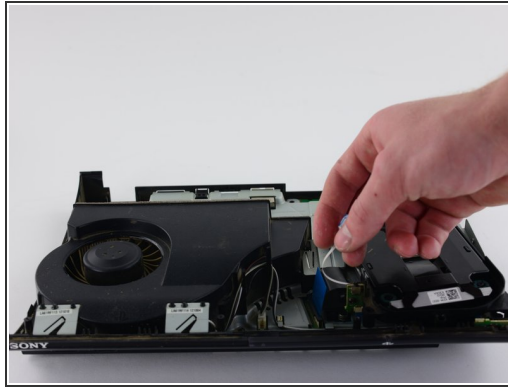
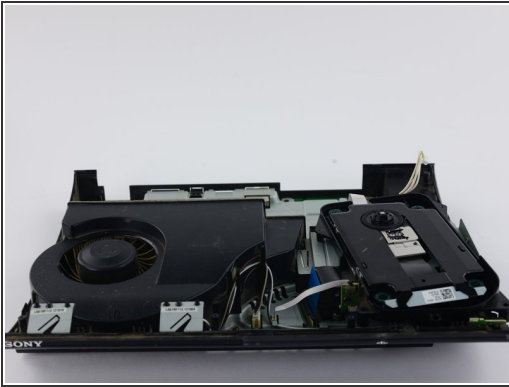
- Move the optical drive to the side to reveal one of the silver 8.8mm long screws.
- Remove the two silver 8.8mm long screws on either side with a Phillips #1 screwdriver.

Step 9



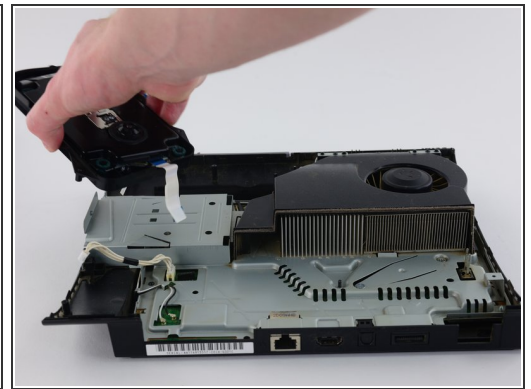
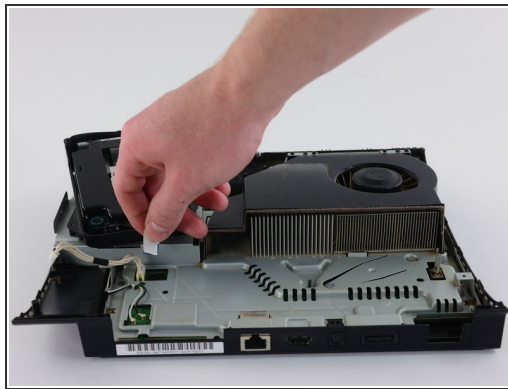
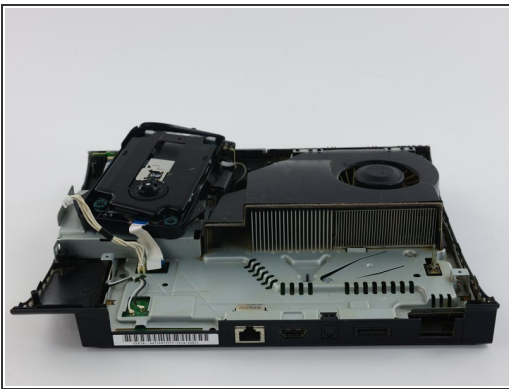
- Remove the cable from the plug and remove the wires from the two plastic hooks.
- ⚠ When removing the cable from the plug, pull on the plastic male connector, not on the wires.
- Remove the power supply unit.

Step 10 — Optical Drive



- Remove the front white flex-ribbon cable by pulling upward from its base.
- Remove the black and blue flex-ribbon cable behind it by pulling upward on the black tab, then pulling out the cable.

Step 11



- Rotate the device 180 degrees.
- Remove the back white flex-ribbon cable by pulling upward from its base.
- Remove the optical drive.

Install the replacement optical drive. To reassemble your device, follow these instructions in reverse order.