



Repair Broken Connections in the Pyrus PY21S03211

This guide is designed to help solder any wires...

Written By: Danielle Hadaway



INTRODUCTION

This guide is designed to help solder any wires that may be broken. Soldering irons are somewhat dangerous to handle due to the extreme heat, so exercise caution when soldering. It's also very important to keep the thick white connector from breaking, so when opening the side panel, keep the device close to the panel until the connector is safely removed.

TOOLS:

[Phillips #000 Screwdriver](#) (1)

[iFixit Opening Picks \(Set of 6\)](#) (1)

[Soldering Iron 60w Hakko 503F](#) (1)

Step 1 — Repair Broken Connections in the Pyrus PY21S03211



- Turn the video camera upside down so the bottom of the device is visible.

Step 2



- Pull back the bottom tab to reveal the battery compartment.

Step 3



- Pull back the tab that is holding in the battery in place and remove the battery from the device.

Step 4



- Find the device's HDMI/TV cover.

Step 5



- Open the cover to reveal the device ports.

Step 6



- Use the screwdriver to remove the 2 4mm screws from the port cover.

Step 7



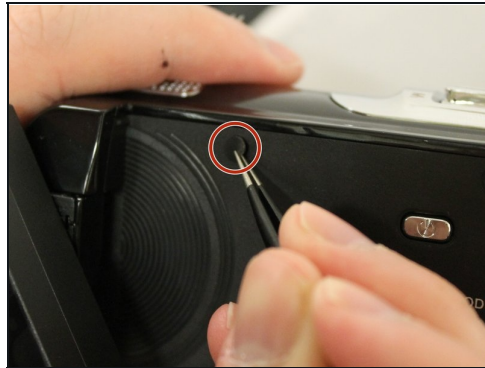
- Use the tweezers to remove the plastic port cover.

Step 8



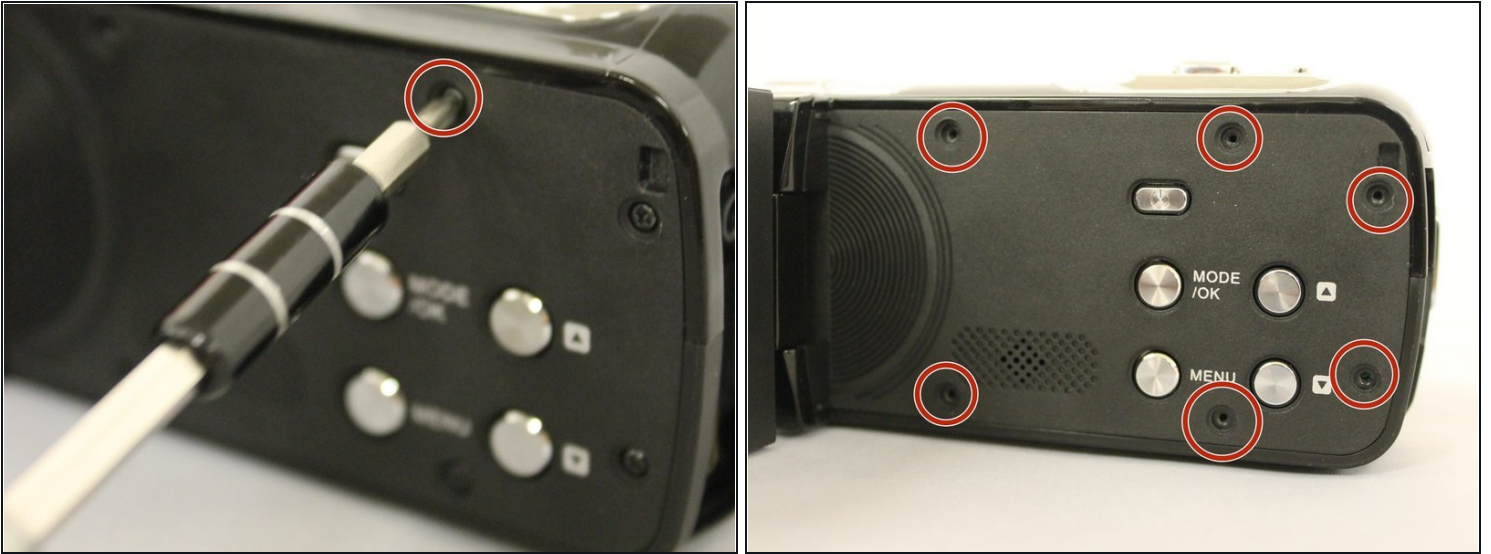
- Open the display screen.

Step 9



- Use tweezers to carefully pull out the circular stickers to reveal the 4mm screws.

Step 10



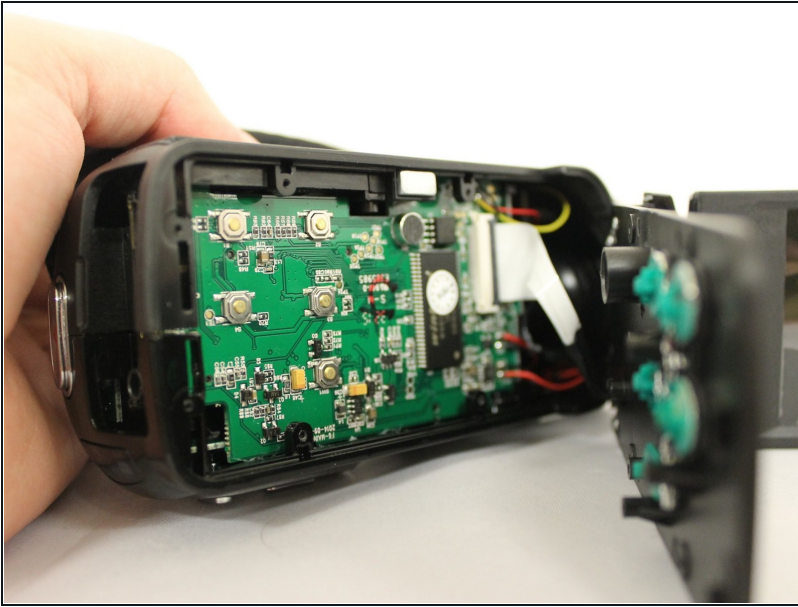
- Use the screwdriver to remove all six 4mm screws from the side of the device.

Step 11



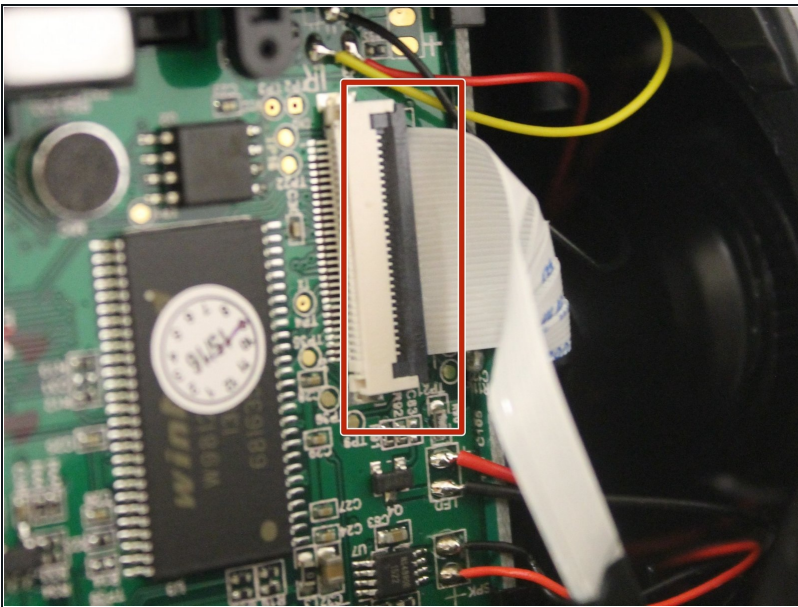
- Use a thin plastic pick to pry off the side of the device and carefully remove the display.

Step 12



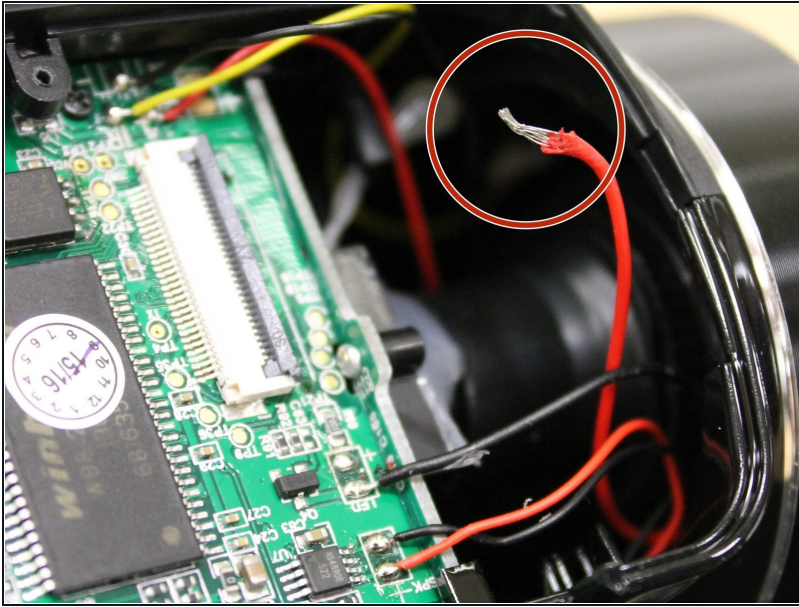
- Carefully remove the side face from the device. Avoid pulling on the white connector.

Step 13



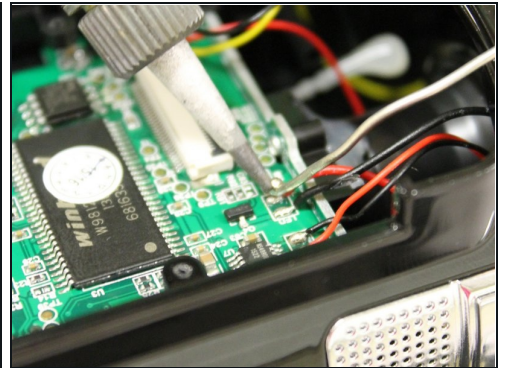
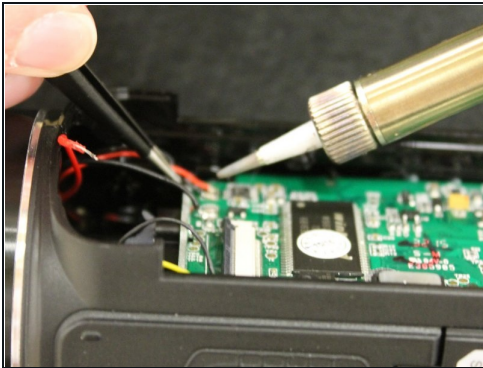
- To remove the side face entirely, find the large white connector, flip open the grey lip with tweezers, and gently remove the white connector.

Step 14



- Find the broken wire.

Step 15



- Use the [advanced soldering guide](#) to solder the wire back onto the motherboard.
-