



Boombotix Boombot Mini Speaker Replacement

Replace the speaker in your Boombotix Boombot Mini.

Written By: Riley Grogg



INTRODUCTION

Use this guide to replace a speaker in the Boombotix Boombot Mini.

TOOLS:

- [Essential Electronics Toolkit](#) (1)
-

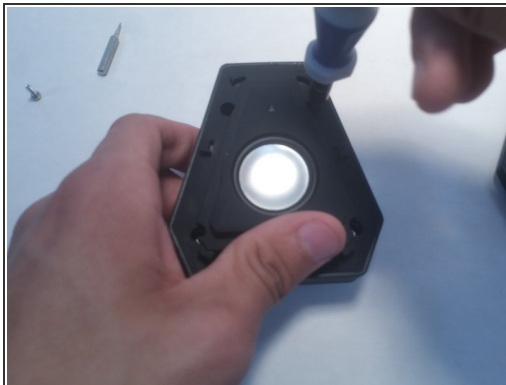
Step 1 — Speaker



- Twist the front panel of the speaker to the left.

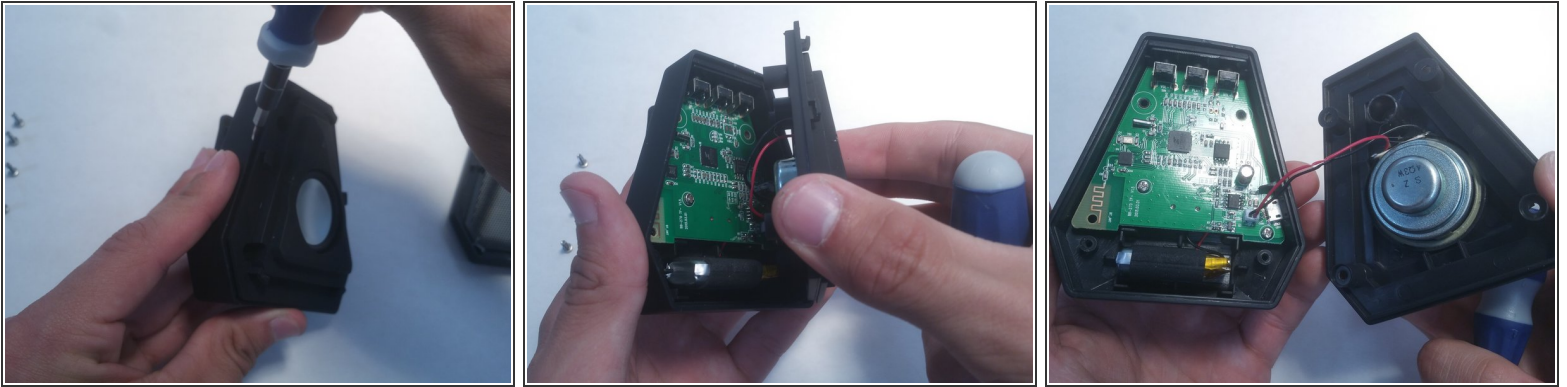
⚠ Do not try to pry or pop off the front panel.

Step 2




- Take out the four screws, then remove the panel that contains the speaker.

Step 3



- Take the speaker off of the base.
- Expose the motherboard and place the speaker next to it.


 Be careful not to tangle or damage the wires connecting the speaker.

 This panel will be harder to get off. Use something small such as a card to create a lip for leverage.

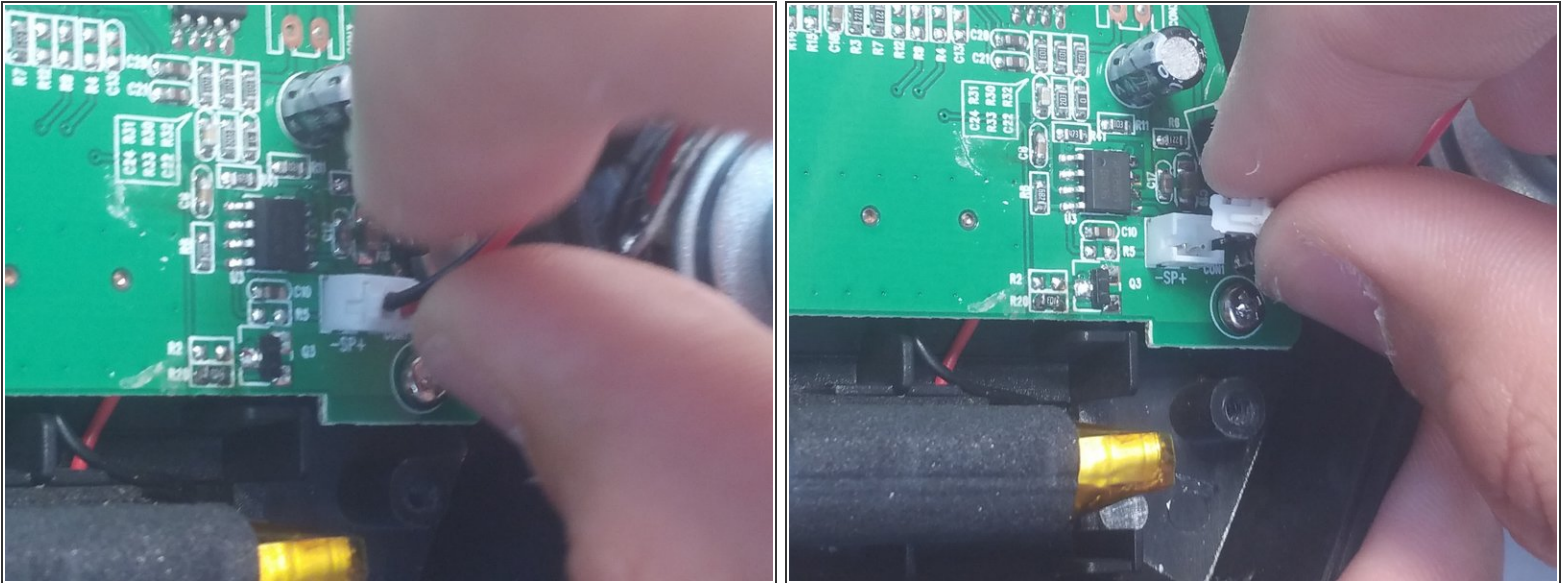
Step 4



- Find the connection of the speaker by following the wires.

 Do not damage the battery. Make sure not to use any metal object to poke around in the device because of possible shock.

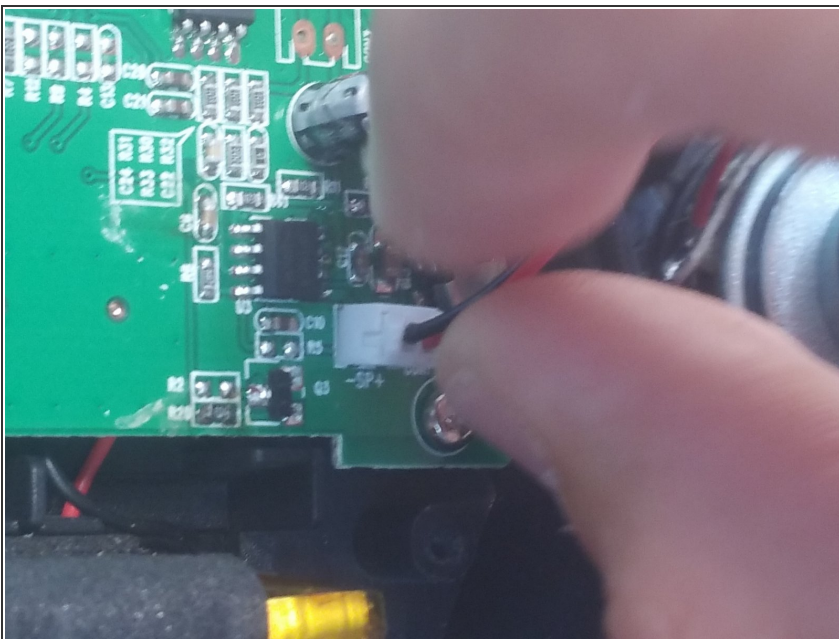
Step 5



- Now that you have found the wire connection to the motherboard, disconnect it.

 Pull the wire straight out.

Step 6



- Connect the white plug of the new speaker to the motherboard.

To reassemble your device, follow these instructions in reverse order.