



# Vintage Oster Mixer Power Cord Replacement

This guide will go through the process of disassembling an Oster mixer to the point in which you will be able to remove and replace the power cord.

Written By: Maxwell Schermerhorn





## TOOLS:

- [Large Needle Nose Pliers](#) (1)
- [Tweezers](#) (1)
- [Slip Joint Pliers](#) (1)
- [Socket Set](#) (1)

## Step 1 — Power Cord



- The tools you will need are:
  - Needle nose pliers
  - Tweezers
  - Slip joint pliers
  - A 9/32 & 7/16 socket
  - Extension optional
  - A multi head screwdriver

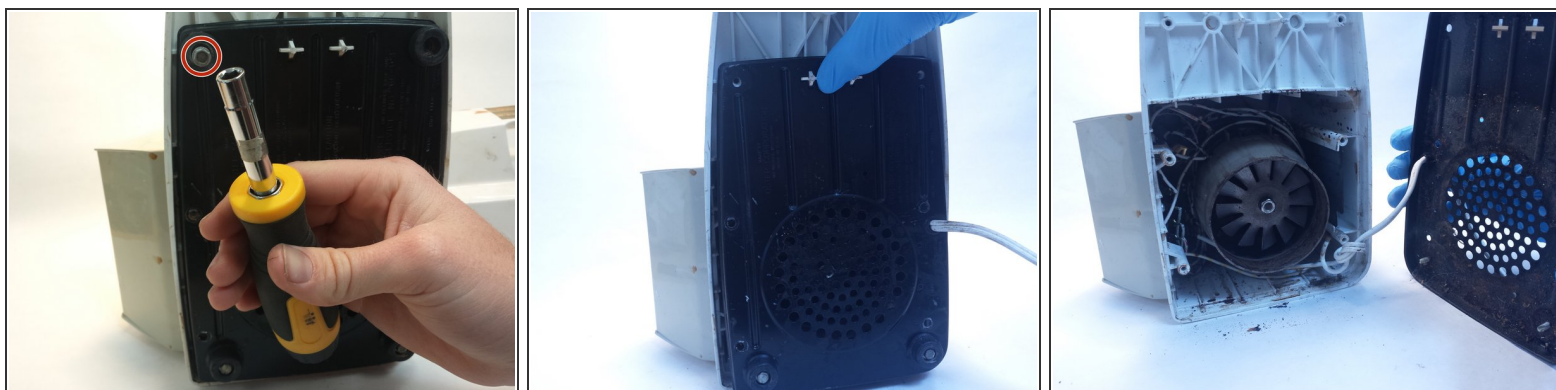
## Step 2



- To begin you need to remove the top of the blender. To do this you must push inward on the tab located on the bottom of the top half of the machine. After pushing the tab you can then lift up using the handle to remove the top.



### Step 3



- Next you will need to tip the mixer onto its back to get a better angle. After you tip it onto its back, you will need to take a screwdriver with a 9/32 head or a 9/32 socket and unscrew the four bolts thus removing the black bottom tray.

### Step 4



- Here you will need your 7/16 socket and your slip joint pliers. First you will need fit your 7/16 socket on the hex nut on the bottom of the machine and your slip joint pliers on the rod sticking through the top of the machine. You will then loosen the nut with your socket while holding the top with your slip joint pliers.
- By doing this you will be removing the flywheel thus giving you more room to remove the electrical connections.

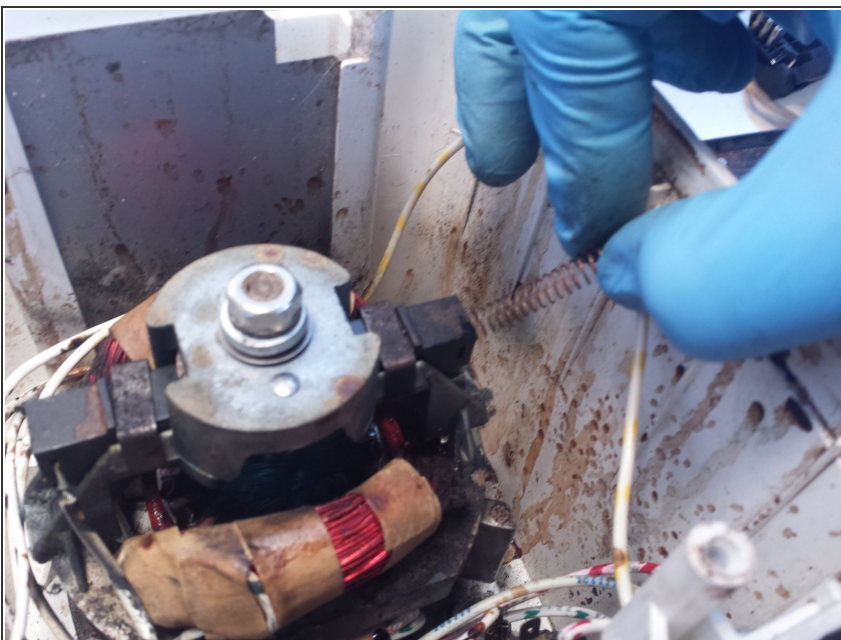
## Step 5



- At this step you will need your needle nose pliers to pry this angled tab straight which will allow you to pull it back through the slot.

⚠ After pulling the connector back through the slot a spring will begin to come out, do not remove or lose it.

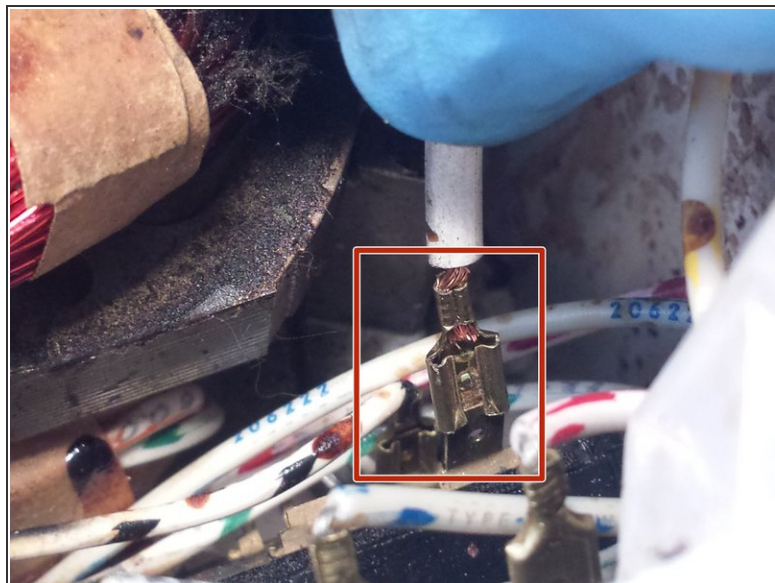
## Step 6



⚠ After you remove the first connection, this motor brush will begin to come out but do not remove it completely.



## Step 7



- Lastly you will need to use tweezers or needle nose pliers to remove the last electrical connection. With this connection all you need is to pull back on the metal part or the connection with your tweezers or needle nose pliers.

To reassemble your device, follow these instructions in reverse order.