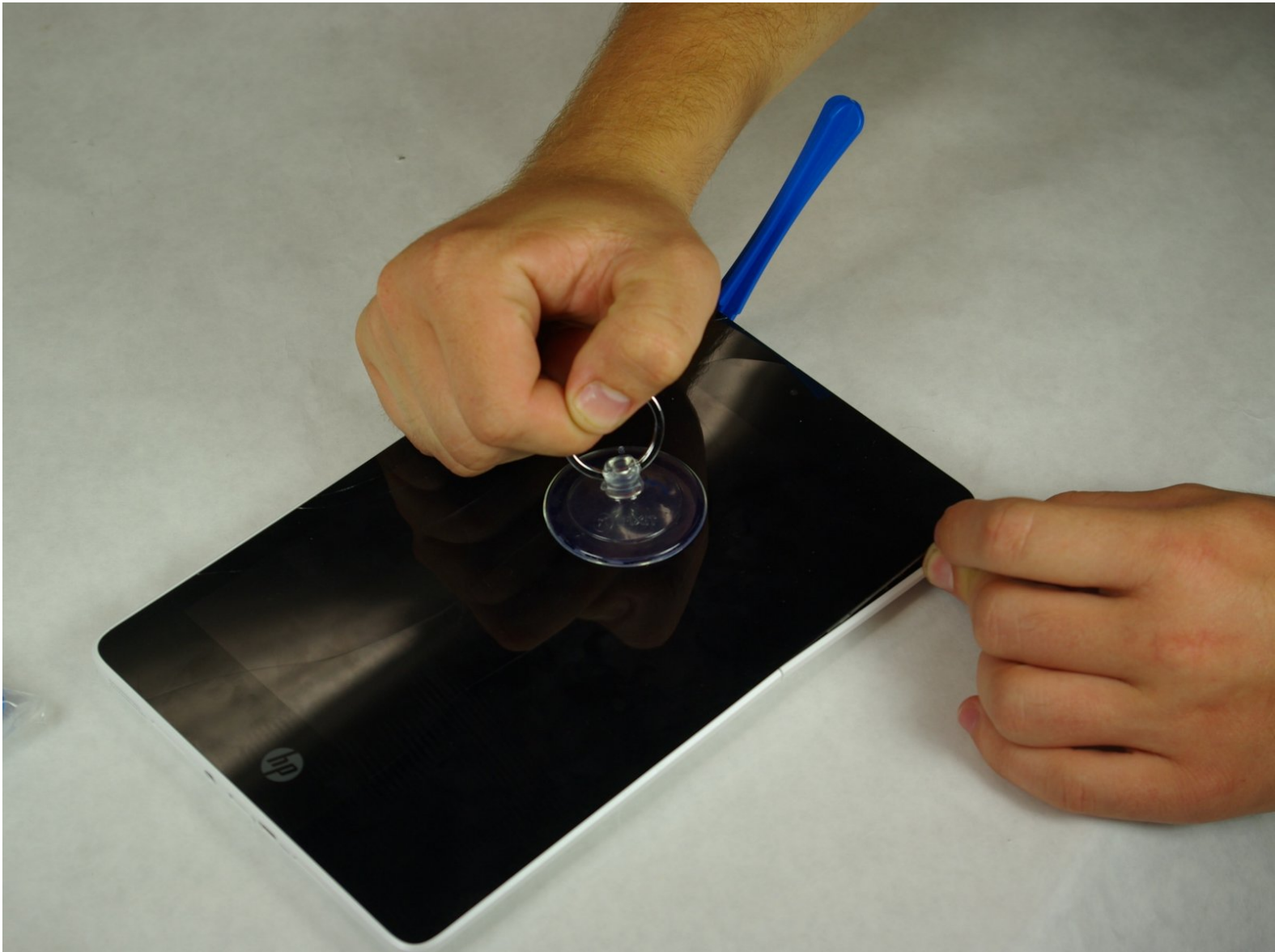




HP Slate 8 Pro Front Facing Camera Replacement

A guide to show the procedure for the replacement of the front facing camera.

Written By: Andrew Hall



INTRODUCTION

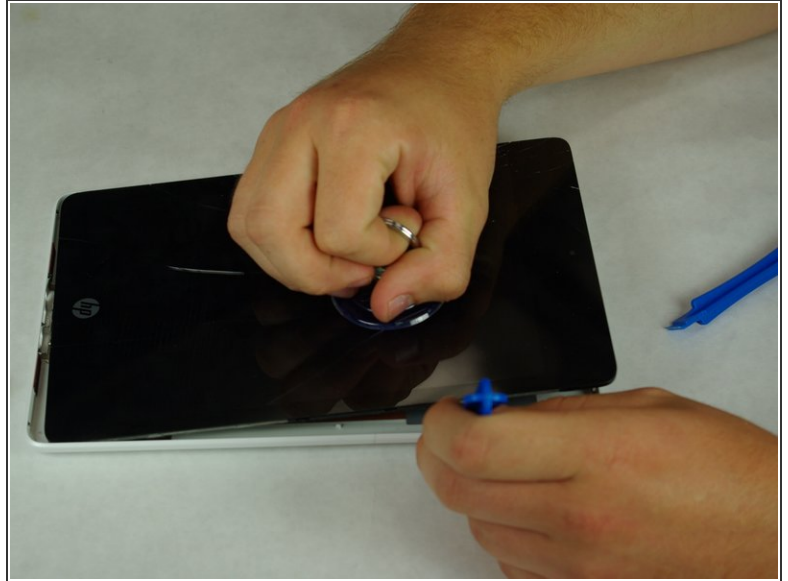
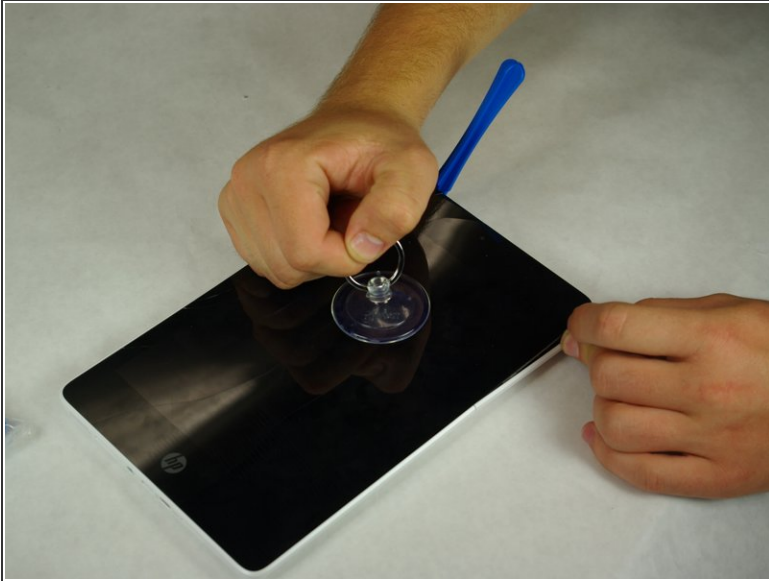
This guide will show you how to pry open the screen and replace the front-facing camera.



TOOLS:

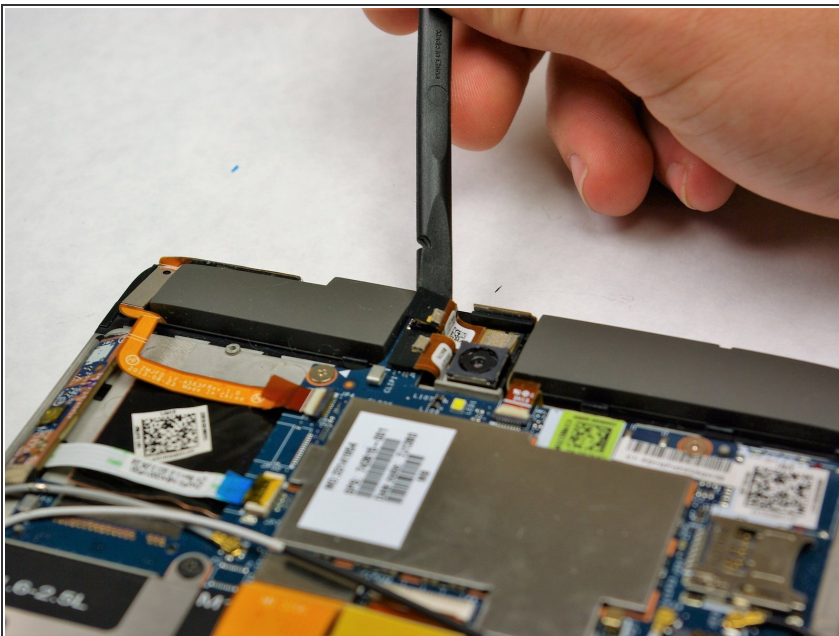
- [iFixit Opening Tools](#) (1)
 - [Spudger](#) (1)
 - [Suction Handle](#) (1)
 - [Tweezers](#) (1)
-

Step 1 — Front Facing Camera



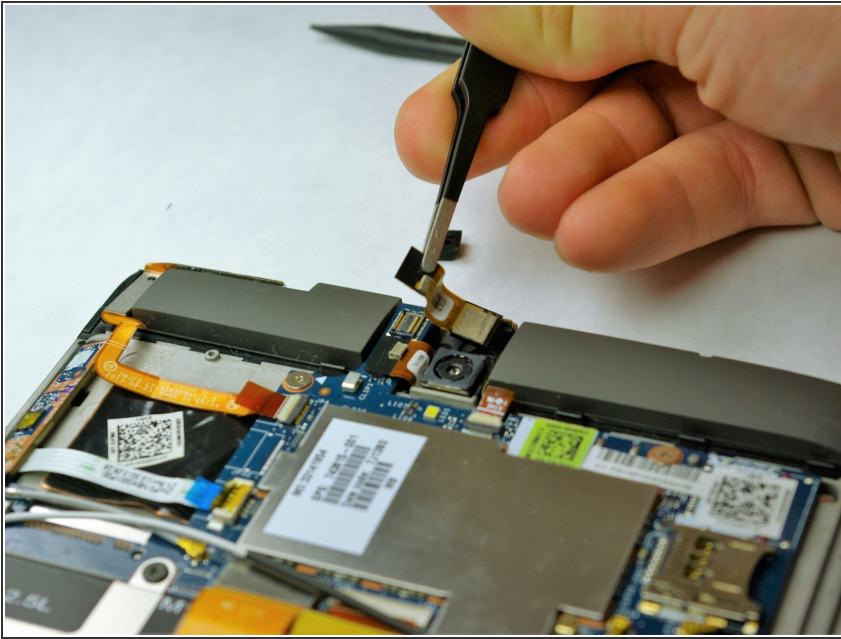
- Secure the suction cup to the center of the screen.
- Using a plastic opening tool, pry along the edges of the display while pulling upwards with the suction cup.

Step 2



- Use the Spudger to disconnect the ribbon cable to the upper camera by prying the connector away from the board.

Step 3



- Use ESD safe tweezers to pry the camera away from the motherboard starting at the side opposite the ribbon cable.

To reassemble your device, follow these instructions in reverse order.