



Nokia Lumia 520 Touchscreen Replacement

Follow this guide to replace the glass and frame

Written By: Smilzo



INTRODUCTION

Follow this guide to repair the glass and frame.

Step 1 — Touchscreen and LCD



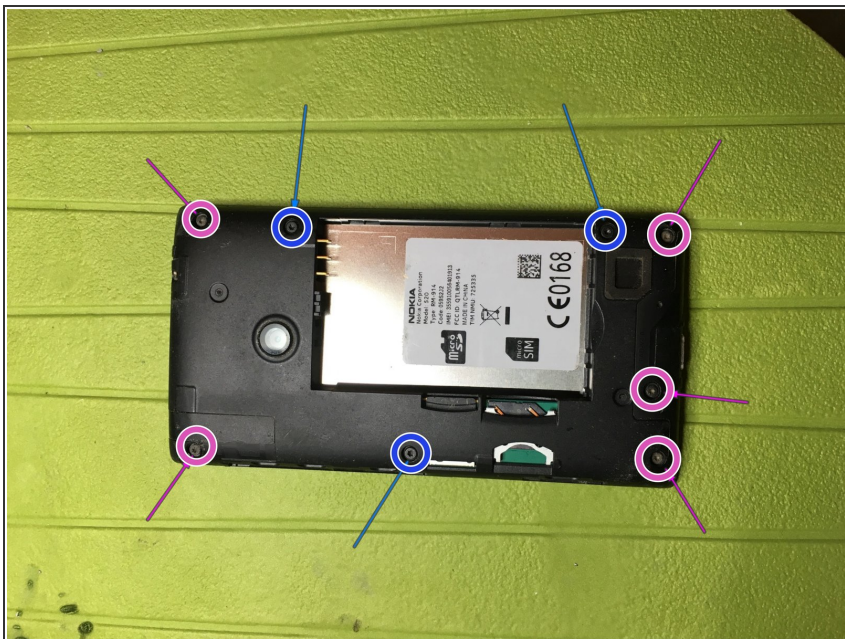
- Remove the back cover.

Step 2



- Remove the battery.

Step 3



- Remove 5 long screws, pink arrow
- Remove 3 short screws, blue arrow

Step 4



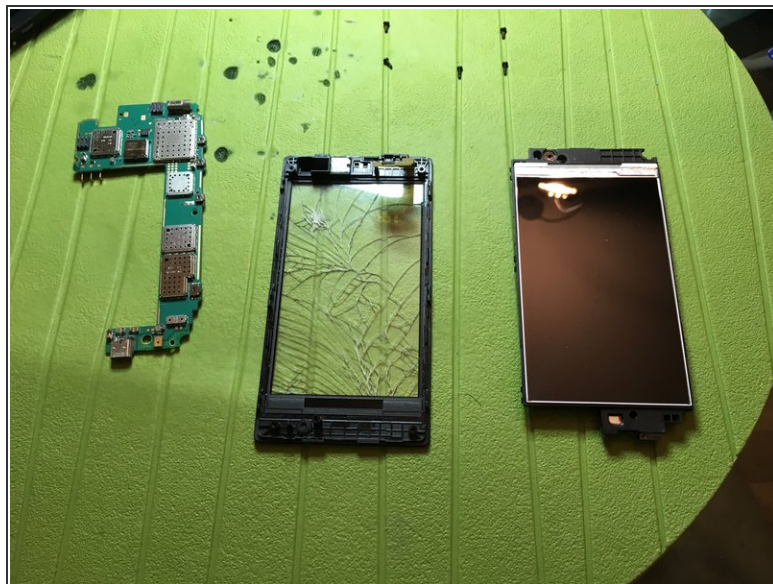
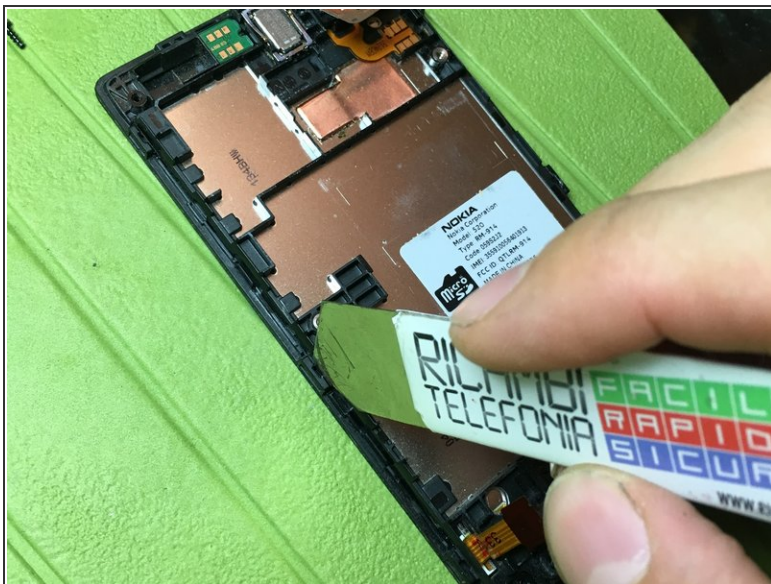
- With a thin tool, unhook the central body from the back cover, along the entire profile of the phone

Step 5



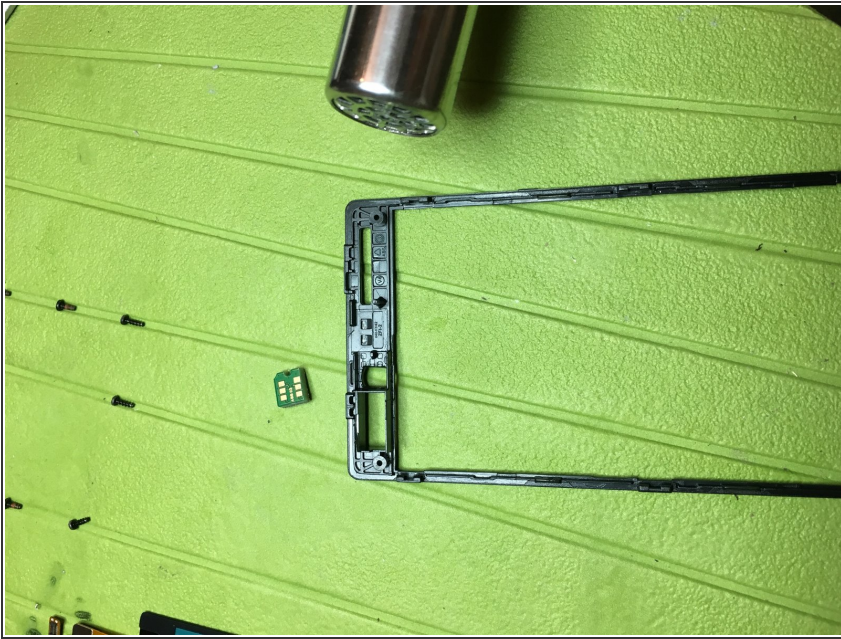
- Unclip the touchscreen connector
- Unhook the display connector
- Unhook the motherboard from the central phone body

Step 6



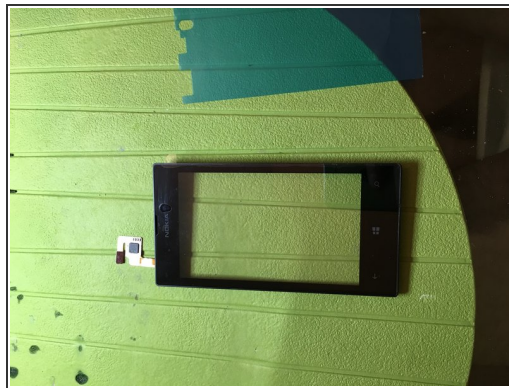
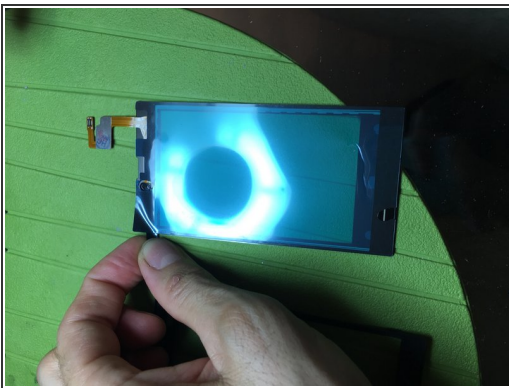
- Pull up the central frame from the touchscreen assembly by lifting the clips on the perimeter with a thin tool.

Step 7



- Remove the light sensor from the old frame with the help of a heat source.
- Insert the sensor in the new frame.

Step 8



- Remove film that protects double-sided adhesive from the new touchscreen glass
- Insert flat touchscreen into the frame slot and adhere the double sided adhesive to the frame by placing it in the correct position

To reassemble the device, follow these instructions in reverse order.