



Panasonic Lumix DMC-FH27 Door Replacement

This guide will show you step by step on how to replace your damaged or missing door.

Written By: Sales Cameraparts4you



www.cameraparts4you.com

INTRODUCTION

This guide will show you step by step on how to replace your damaged or missing door.



PARTS:

- [DMC-FH27 Door Replacement VYK5C60](#) (1)
-

Step 1 — Step 1



- Remove the battery and memory card from the device.

Step 2 — Step 2



- Remove 2 (0.3mm) screws from the left side of the camera.

Step 3 — Step 3



- Remove 4 (0.3mm) screws from the right side of the camera.

Step 4 — Step 4



- Remove 3 (0.4mm) screws from the base of the camera.

Step 5 — Step 5

0.3mm

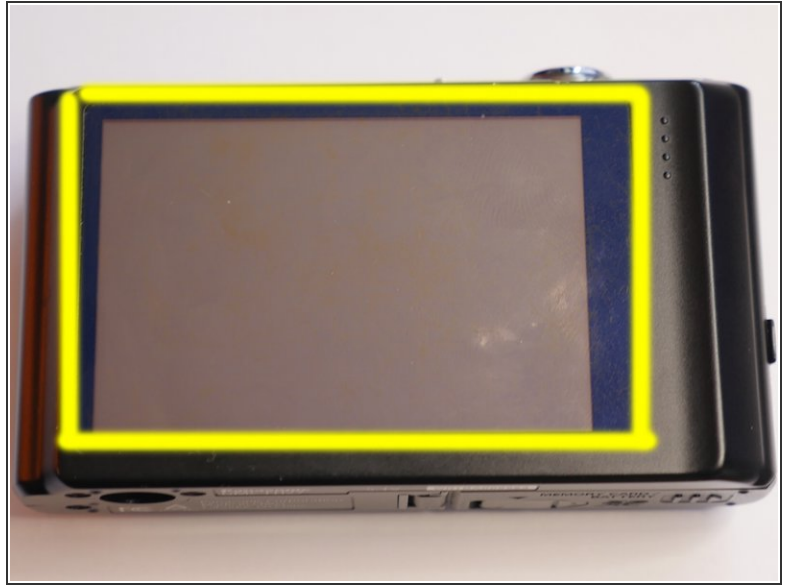




0.4mm



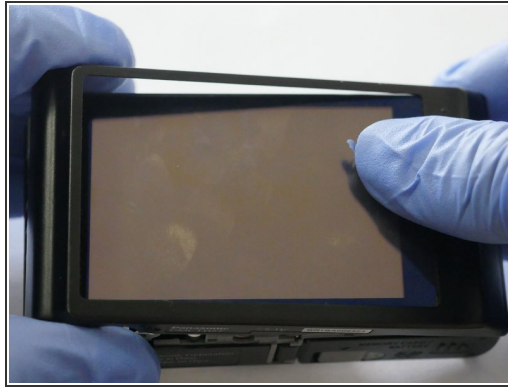
- Arrange your screws properly.


Step 6 — Step 6



-  Do not remove the Rear Casing because it is attached via cable to the Main PCB and circuit board.
- Pry the casing upward slightly, careful NOT to remove it. Only lift it slightly as shown in the picture.
 -  The LCD is attached to the rear casing via a light coating of adhesive on the underside of the yellow highlighted area. In the next step you will apply light pressure to the LCD to release it from the case.

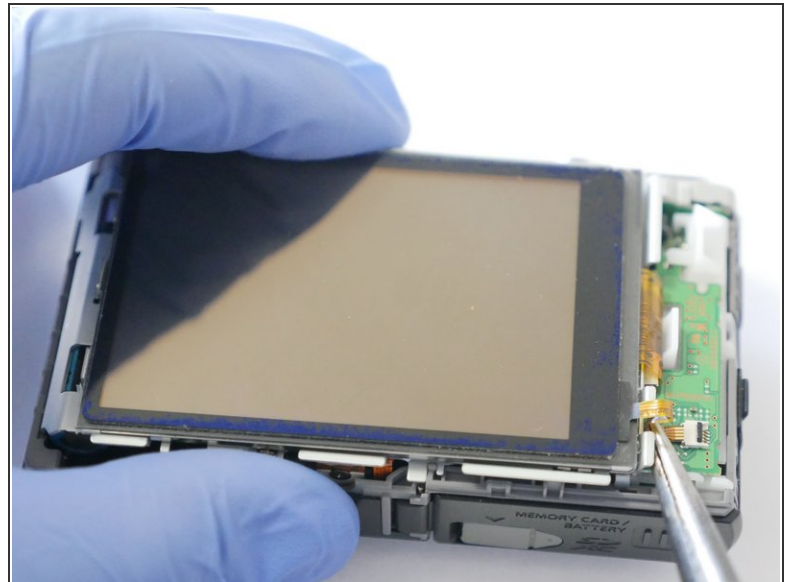
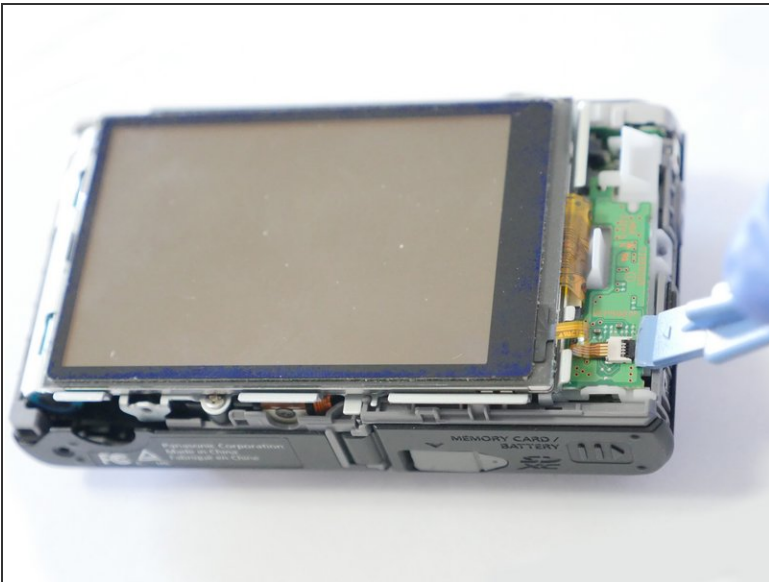
Step 7 — Step 7



 Do not apply heavy pressure and Do Not apply uneven pressure. If you find yourself applying too much pressure then dab some Isopropyl Alcohol 91% using a qtip along the edges to loosen the adhesive.

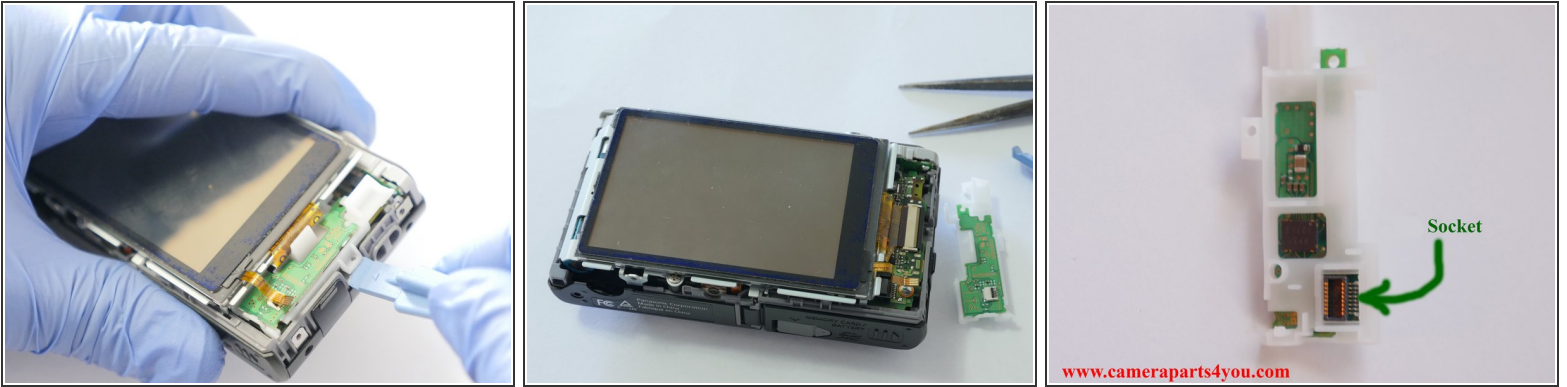
- Using your thumbs gently apply pressure to release the LCD. Both thumbs should be applying even pressure and work your way down to the bottom.
- Once LCD is free of casing, remove Rear Case.

Step 8 — Step 8



- Flip the black clamp to the open (up) position using a spudger or other method.
- Pull out the flex cable from the clamp using flat needle nose pliers or other method.

Step 9 — Step 9



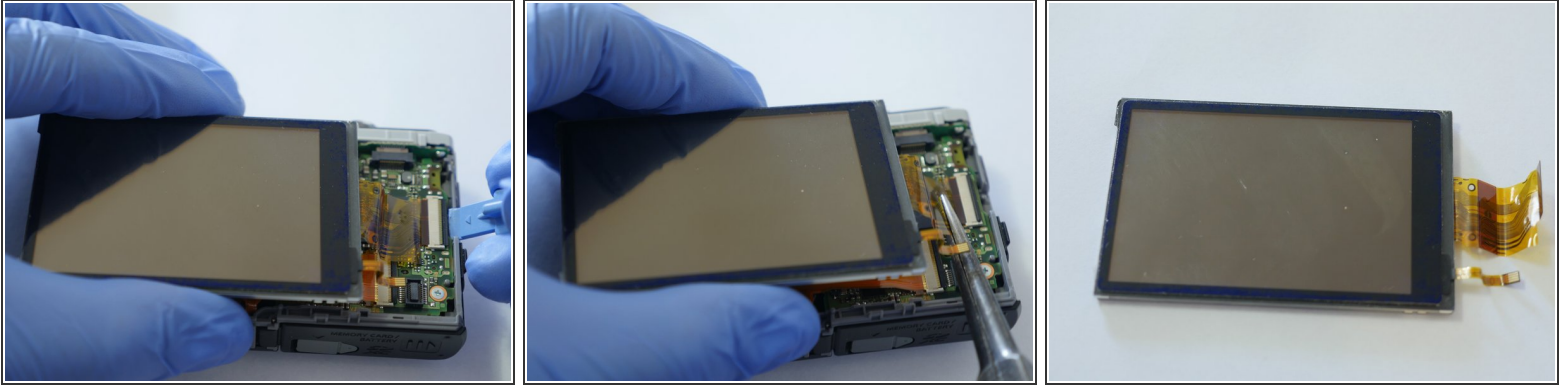
- Use a Spudger or other tool to release the plastic hold down. Then pry the entire assembly upward releasing it from the socket. Try to keep the part as level as possible while prying up.
 - Remove the part
- i** In the last picture you can see (on the reverse side of the part) the socket. This helps understand how the socket snaps down onto the Main Board.

Step 10 — Step 10





- Remove 3 silver (0.8mm) screws from the rear metal plate.
- Lift up and remove the metal plate

Step 11 — Step 11

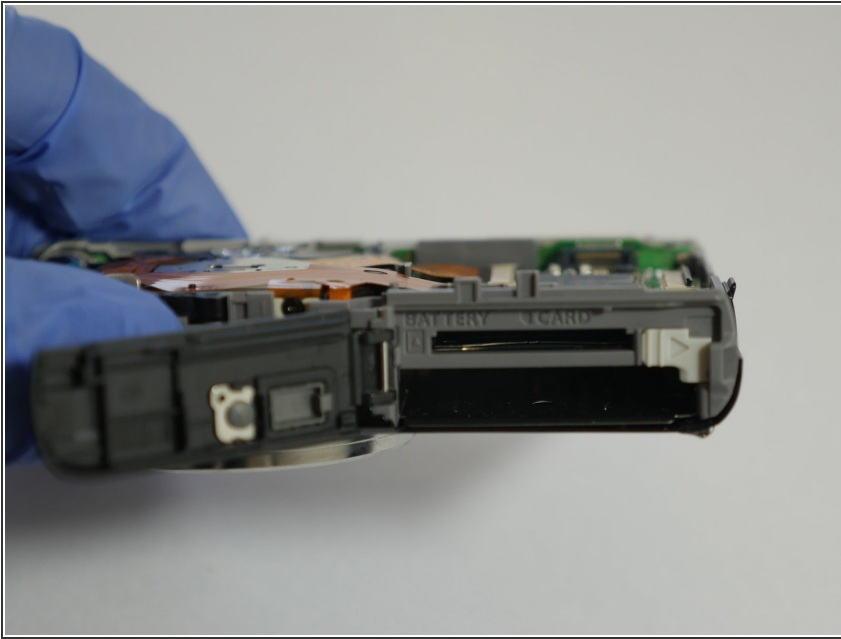


- Use the spudger or other tool to flip up the LCD cable clamp.
- Use Needle nose pliers or other tool to pull out the cable from the clamp.

 **Note:** The metal protection plate has been removed so DO NOT let the LCD rest on the Rear of the camera. Do NOT touch any part of the rear camera or circuits with your bare hands. ESD can destroy your camera.

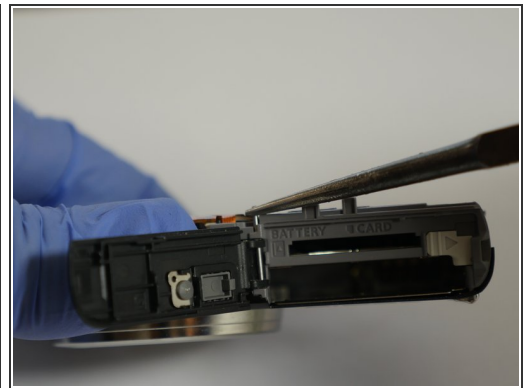
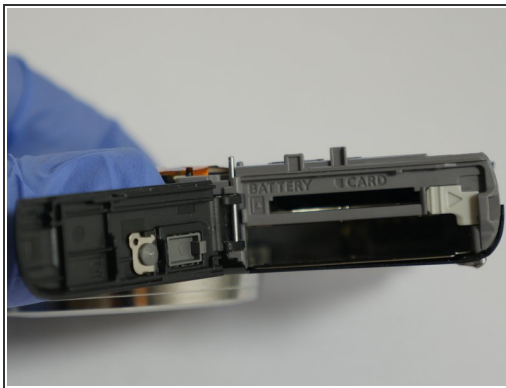
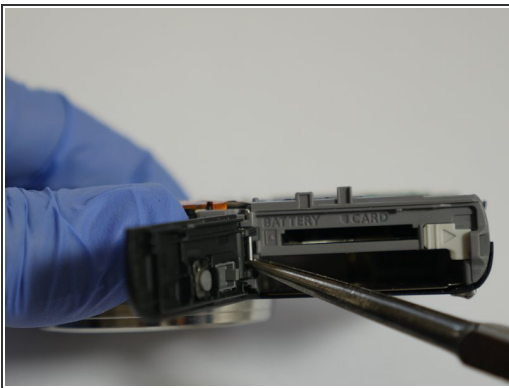
- Remove the LCD part VYK4P64
-  When you purchase part make sure it has all three components included (backlite, touch screen and LCD display)

Step 12 — Opening the compartment



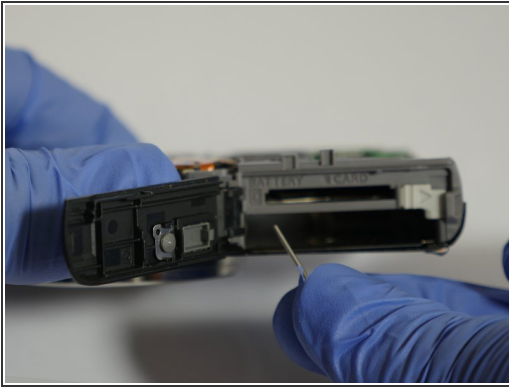
- Open the battery door compartment

Step 13 — Pulling out the rod



- Lift up the Door rod using needle nose pliers
- Lift the rod high enough so you can pull it out
- Use the needle nose pliers to pull out the rod

Step 14



- Pull out the rod (don't loose it)
- Remove the door

To reassemble your device, follow these instructions in reverse order.