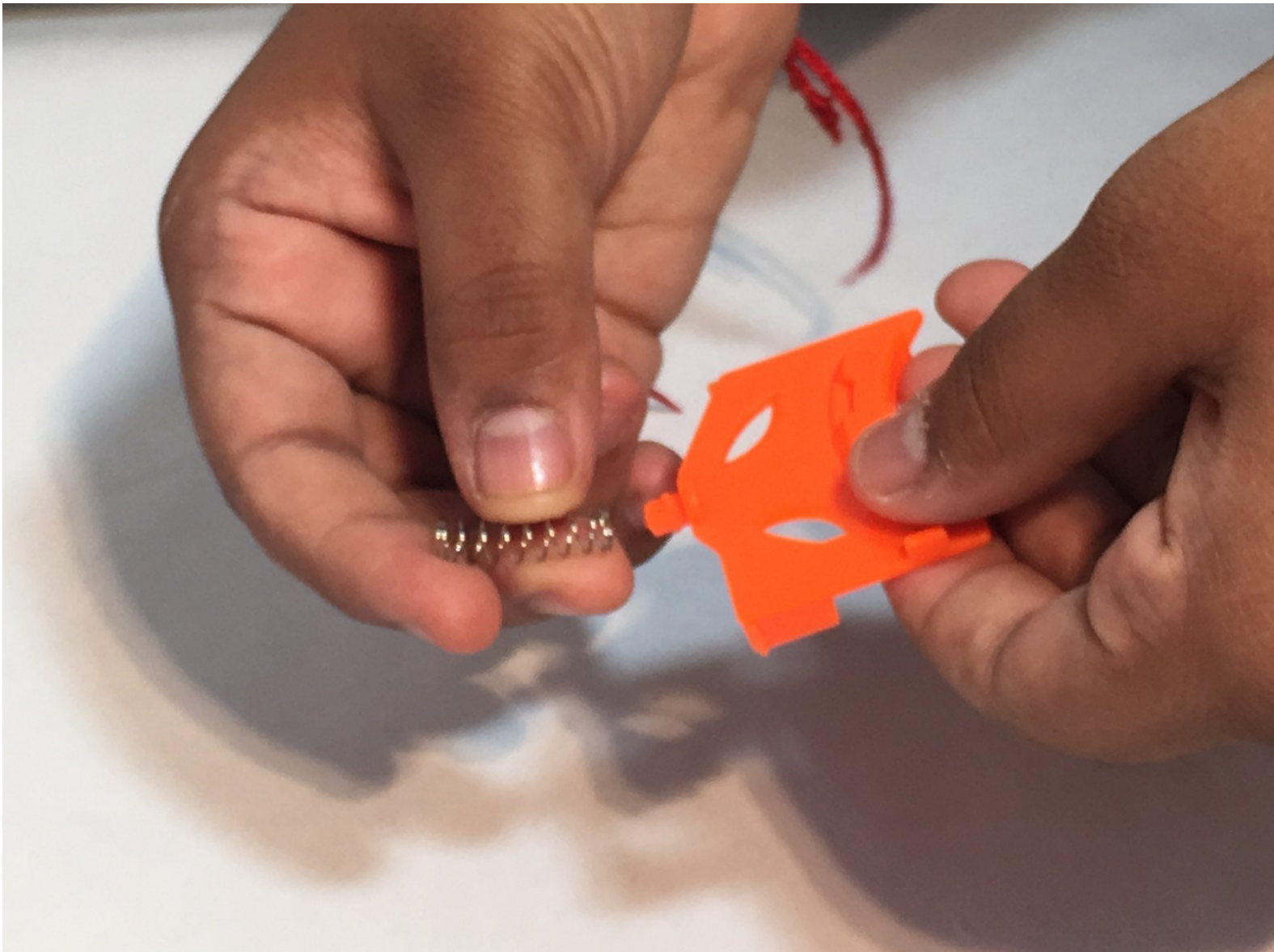




Nerf Dart Tag Swarmfire Trigger Spring Replacement

The trigger for the Nerf Dart Tag Swarmfire...

Written By: Ashely Janae Wodall



INTRODUCTION

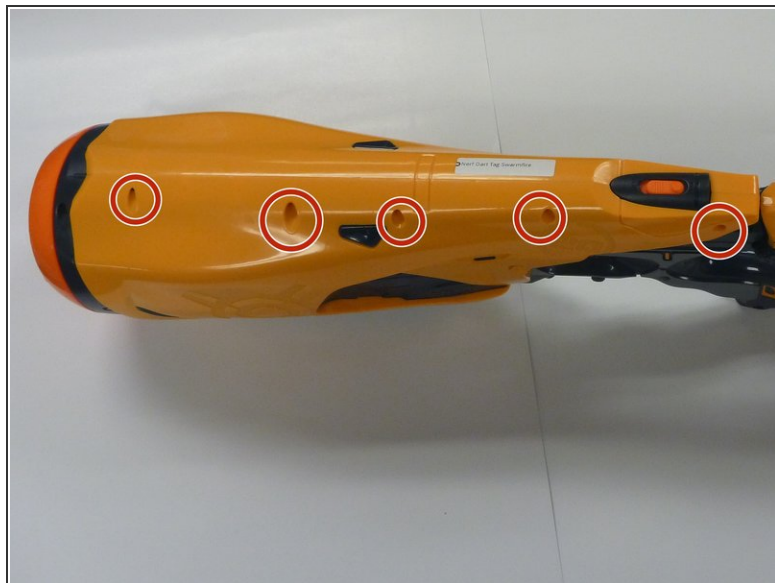
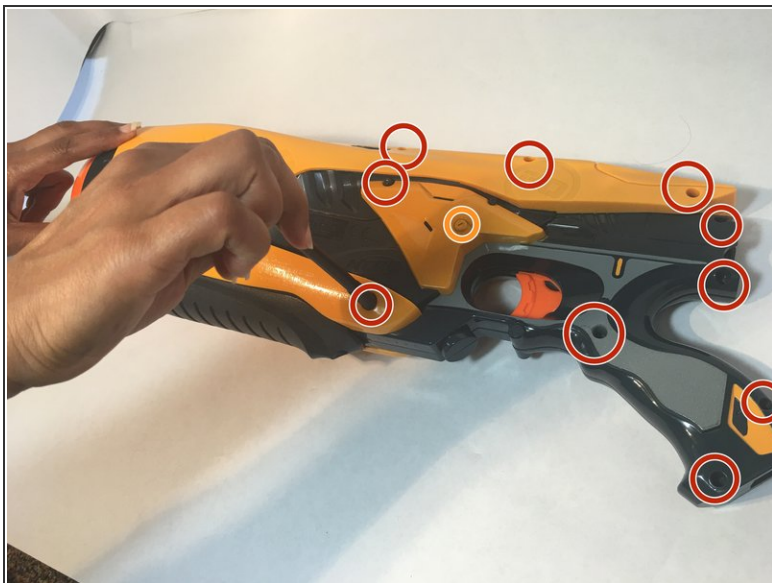
The trigger for the Nerf Dart Tag Swarmfire sometimes malfunctions. This is typically caused by an issue with the trigger spring. Issues can include the spring wearing out or being installed incorrectly. This guide will walk you through how to disassemble the blaster, replace the spring, and reassemble the blaster so the trigger works again.



TOOLS:

- [J1 Screwdriver Bit](#) (1)
- [64 Bit Driver Kit](#) (1)

Step 1 — Trigger Spring



- Place the blaster on its side with the handle to the right and loosen all screws so the shell can be opened. (Not all screws are visible in the provided pictures.)
- Avoid the fake plastic screw, which is merely decorative.

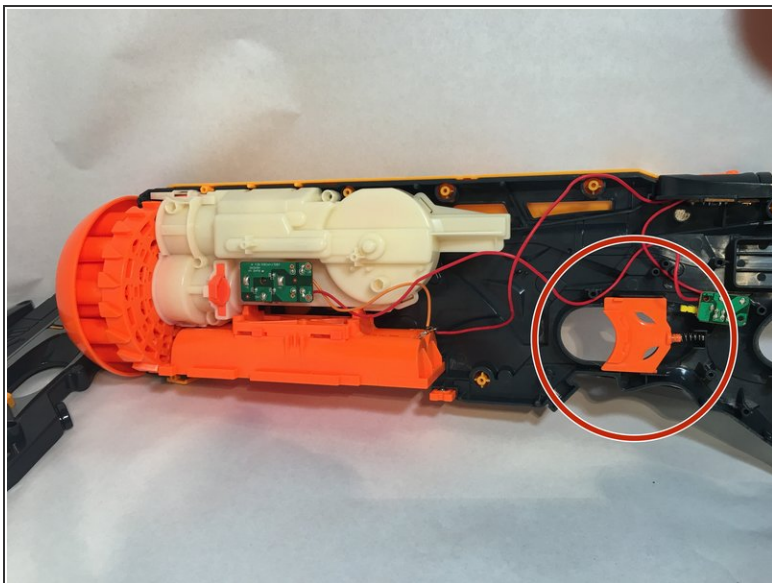
Step 2



- Gently remove the yellow and grey shell pieces from the blaster to display the blaster's motherboards and motor.

⚠ Do not force the shell open. If it does not come off easily, repeat step 1 and ensure all screws are loose.

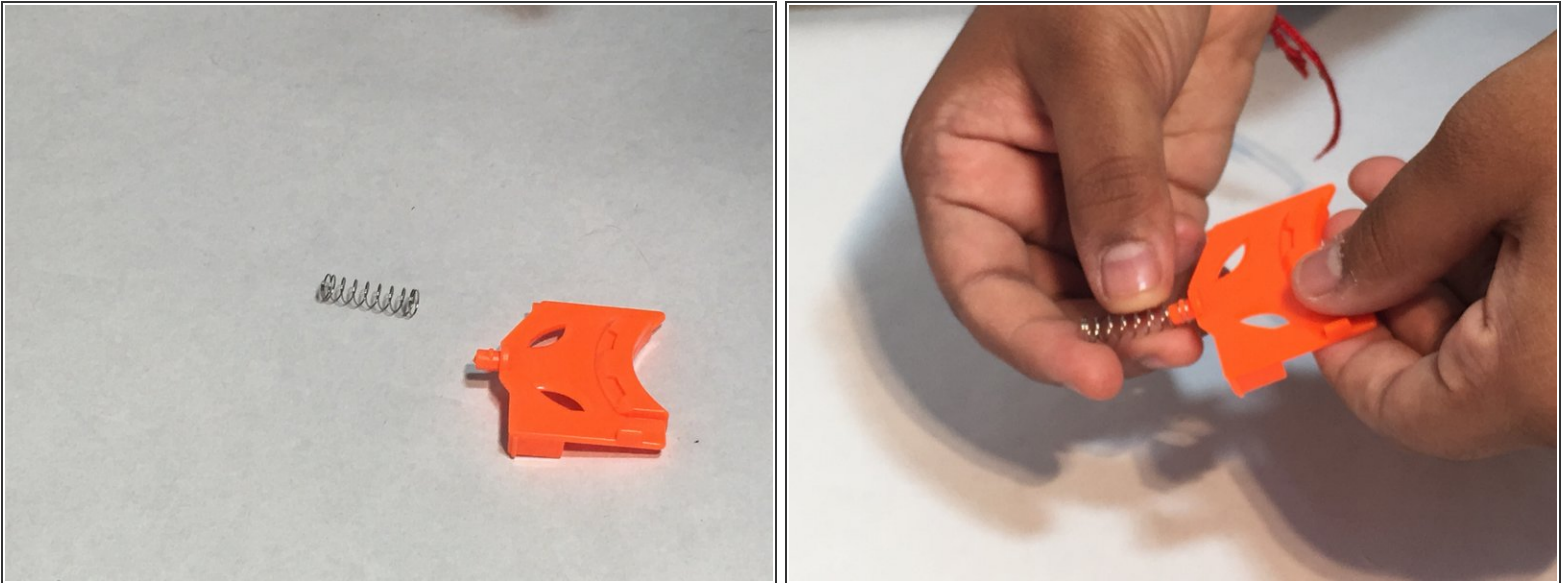
Step 3



- Locate the orange trigger (dark blue if it's the newer version).
- Slide the trigger out of place and check the spring. It should be corrosion-free and fitted to the knob on the back of the trigger.

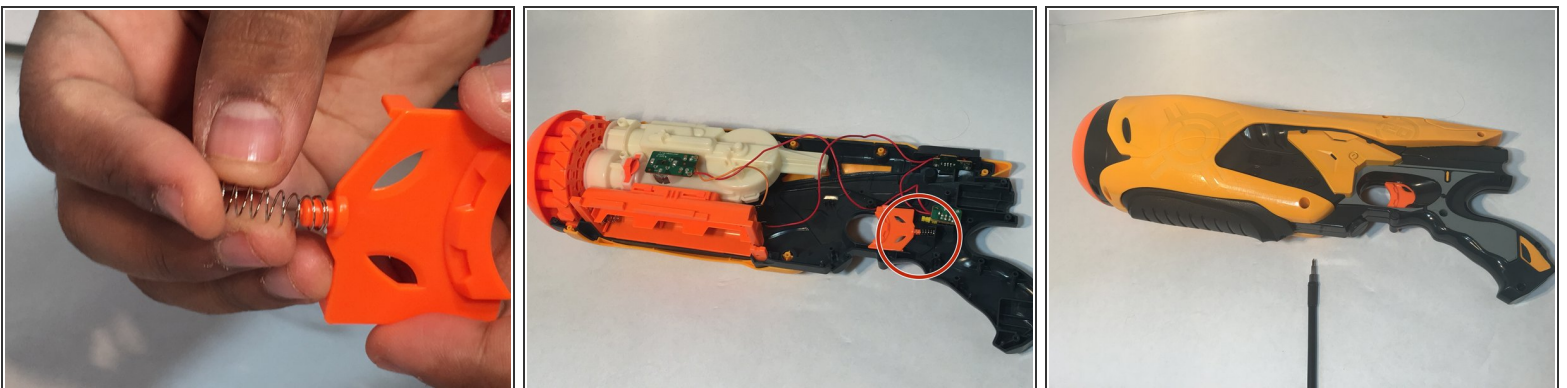
⚠ It's important to check the spring for damage before removing it to prevent injuries.

Step 4



- If it is damaged, pull the spring off the trigger, then push the replacement spring onto the knob so it catches and doesn't fall off.
- If the spring is not damaged, it is possible the spring was installed incorrectly. Ensure the spring is attached to the knob so it sticks straight out and doesn't fall off.

Step 5



- Put the trigger back into place with the trigger spring pressed into the small slot behind the trigger well. It should fit into place straight with slight compression.
- ⓘ It is helpful to test the trigger at this stage by holding it against the shell and sliding it back and forth. A correctly reinstalled spring will not pop out of the slot.

To reassemble the blaster, replace the shell pieces from innermost to outer and gently tighten the screws until they give a little resistance. If the screws give significant resistance initially, back them up and loosely turn them until they screw in with little effort.