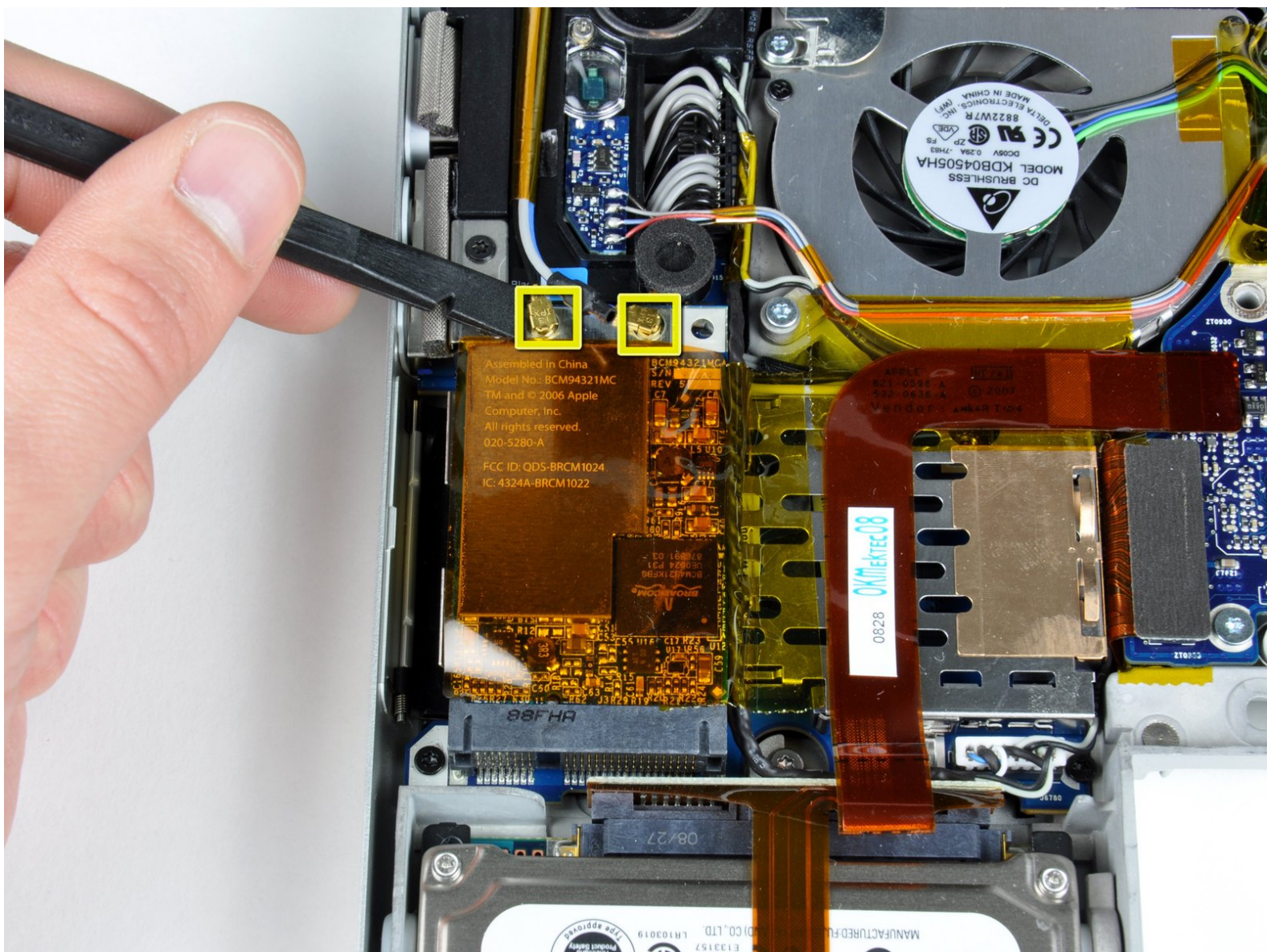




MacBook Pro 15" Core 2 Duo Models A1226 and A1260 Airport Extreme Replacement

Written By: Walter Galan



INTRODUCTION

Install an Airport Extreme 802.11n card internally.



TOOLS:

- [Phillips #00 Screwdriver](#) (1)
- [Spudger](#) (1)
- [T6 Torx Screwdriver](#) (1)
- [Microfiber Cleaning Cloths](#) (1)

Optional



PARTS:

- [MacBook Core 2 Duo 802.11n Airport Extreme Card](#) (1)
- [MacBook Core 2 Duo Santa Rosa/Penryn 802.11n Airport Extreme Card](#) (1)

Step 1 — Battery



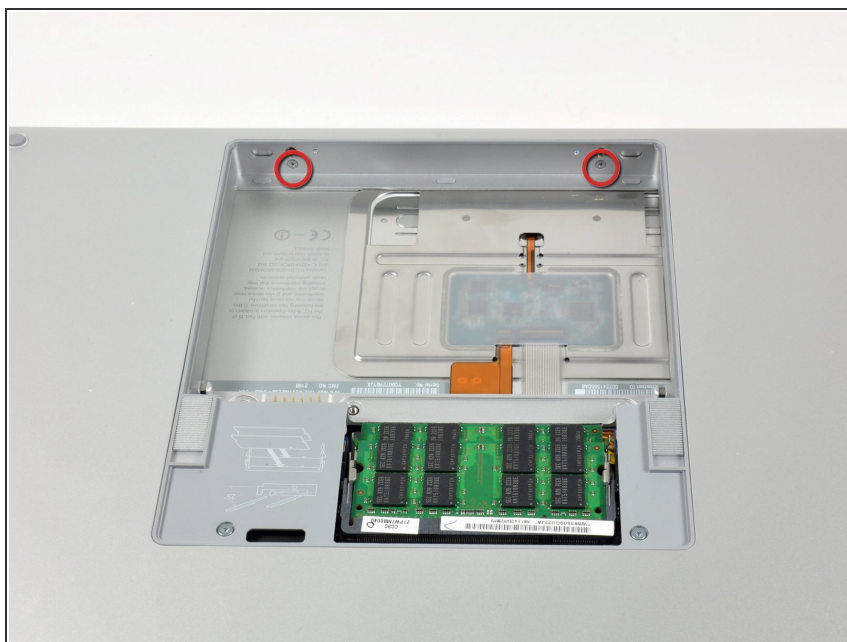
- Use your fingers to push both battery release tabs away from the battery, and lift the battery out of the computer.

Step 2 — RAM Shield



- Remove the three identical 2mm Phillips screws from the memory door.
- Lift the memory door up enough to grip it and slide it toward you, pulling it away from the casing.

Step 3 — Upper Case



- Remove the two 2.8 mm Phillips screws in the battery compartment near the latch.

Step 4



- Remove the following 6 screws:
 - Two 10 mm T6 Torx screws on either side of the RAM slot.
 - Four 14.5 mm Phillips screws along the hinge.

Step 5



- Remove the four 3.2 mm PH00 Phillips screws on the port side of the computer.

Step 6



- Rotate the computer 90 degrees and remove the two 3.2 mm Phillips screws from the rear of the computer.




Step 7



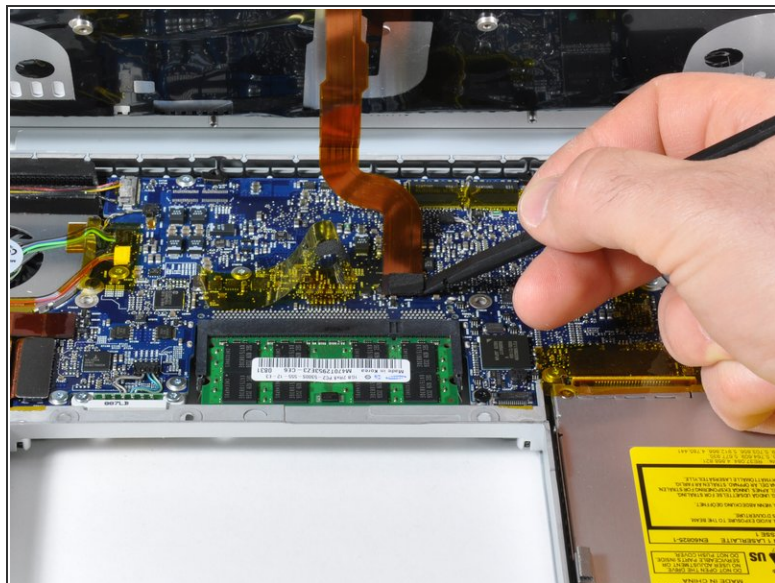
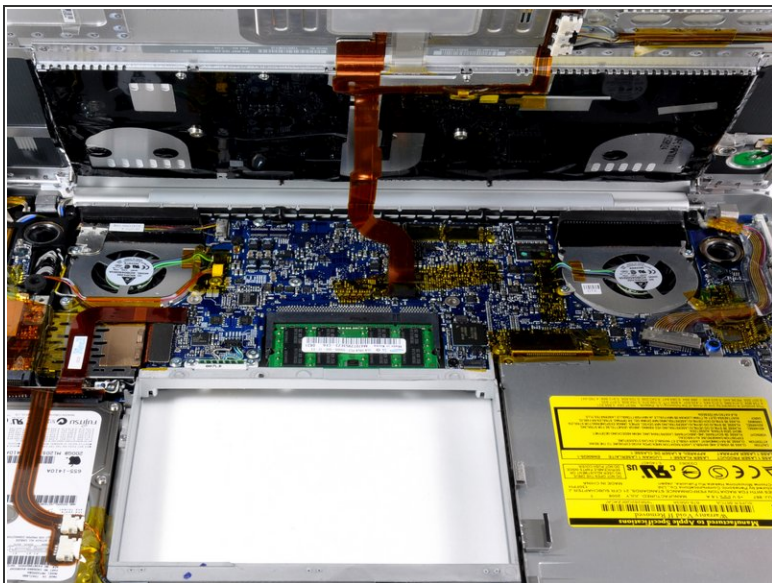
- Rotate the computer 90 degrees again and remove the four 3.2 mm Phillips screws from the side of the computer.

Step 8



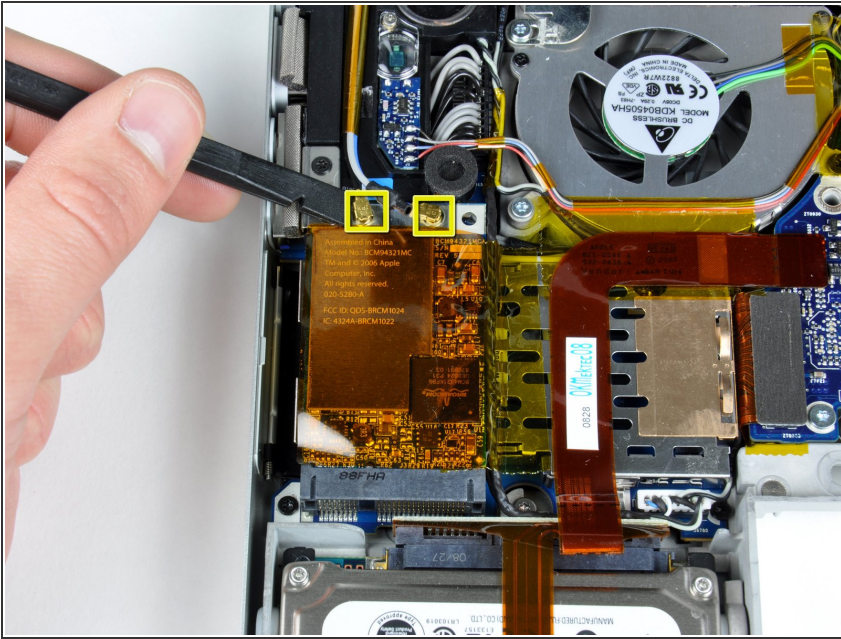
-  Do not yank the upper case off quickly. The case is attached to the logic board via a ribbon cable.
- Lift up at the rear of the case and work your fingers along the sides, freeing the case as you go. Once you have freed the sides, you may need to rock the case up and down to free the front of the upper case.
 - There are four plastic clips above the DVD slot, and another above and to the left of the IR sensor. These clips can be very difficult to disengage without prying. They can also be difficult to re-engage during reassembly.
-  **Reassembly Tip:** Press down firmly on the tip of the top case above the location of each clip until you hear a *snap* to reseal them in their slots.
-  **Reassembly Tip:** The two center DVD clips will rarely snap back into place properly without help, and downward pressure will instead simply deform the frame around the DVD slot. Support the frame by inserting a plastic spudger into the DVD slot directly under the clip location until it is snug, then press down until you hear the *snap*.

Step 9



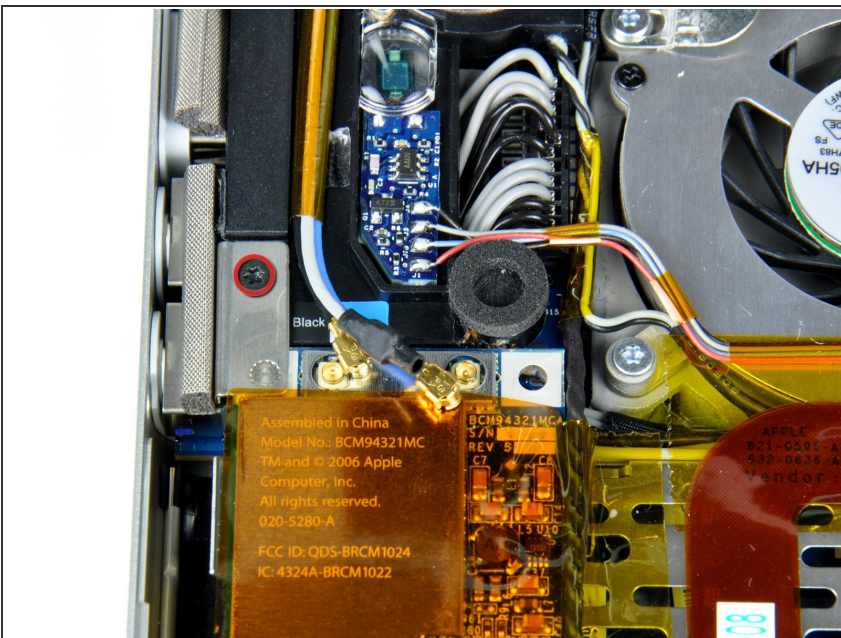
- Disconnect the trackpad and keyboard ribbon cable from the logic board, removing tape as necessary.
- ⓘ Note: It is possible to replace the hard drive without disconnecting the keyboard from the chassis, but it will need to be held upright to keep it out of the way, while still allowing you both hands to work on the drive removal.
- ⓘ Be careful when removing the keyboard-trackpad ribbon cable to ensure that the rear of the upper case is disengaged from the area near the hinge. It is easy to accidentally bend the screw receivers on either side of the keyboard.
- Remove the upper case.

Step 10 — Airport Extreme



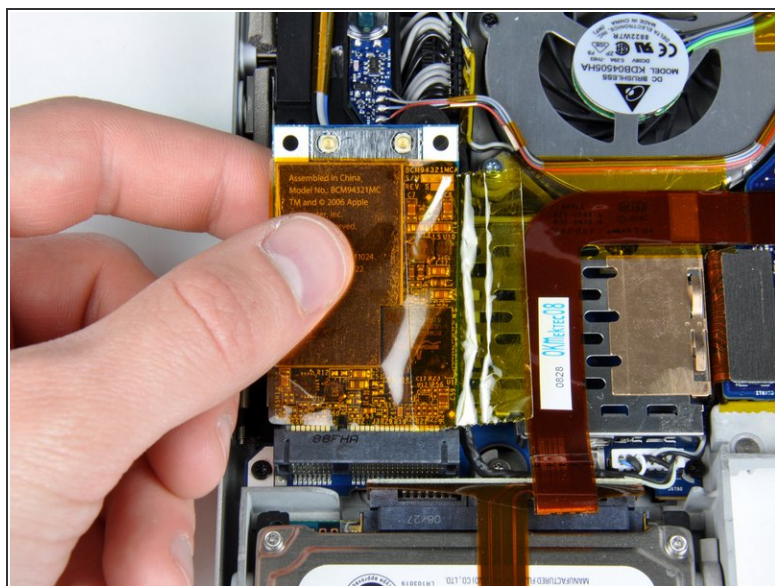
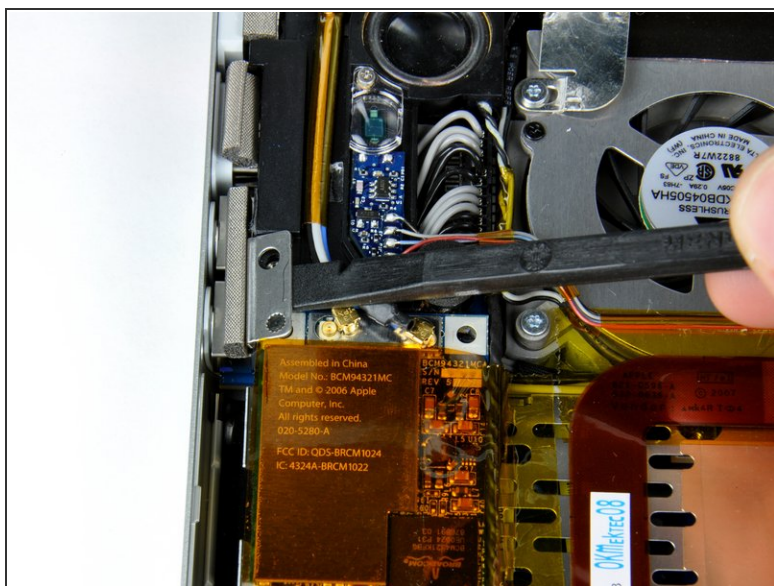
- Disconnect the two antenna cables attached to the Airport Extreme card.
- ★ Apple was kind enough to include a label showing where each color antenna cable plugs in - just make sure to look at this when reconnecting the antenna cables.
- ❗ If you have a MacBook Pro Santa Rosa, there are three antenna cables attached to the Airport Extreme card instead of two.

Step 11



- Remove the single black T6 Torx screw located just above the Airport Extreme card.

Step 12



- Use a spudger to lift the small silver metal retaining bracket up and out of the computer.
- Lift the Airport Extreme card up and slide it out of its connector.

To reassemble your device, follow these instructions in reverse order.