



Epson Stylus Photo 1400 Paper Eject Frame Assembly Replacement

How to remove the Paper Eject Frame Assembly for Epson Stylus 1400.

Written By: Larry Huang



INTRODUCTION

This guide shows how to remove the paper eject frame assembly. Constant paper jams might be caused by a faulty paper eject frame assembly. This process requires the knowledge of how to use basic tools.



TOOLS:

- [6-in-1 Screwdriver](#) (1)
- [Phillips #2 Screwdriver](#) (1)



PARTS:

- [Paper EJ assy](#) (1)

Step 1 — Housing



- Turn off the printer.
- Disconnect all data connections coming into the printer such as USB, networkd cables, firewire, etc. as well as removing the power cord.

Step 2



- Locate the IEEE cover in the back.
- Gently slide the cover to the right to unlatch, then pull to remove it.

Step 3



- Using a Phillips #2 screwdriver, remove the four 10 mm screws shown.
- Remove the 6 mm screw that holds the rear housing in place.

Step 4



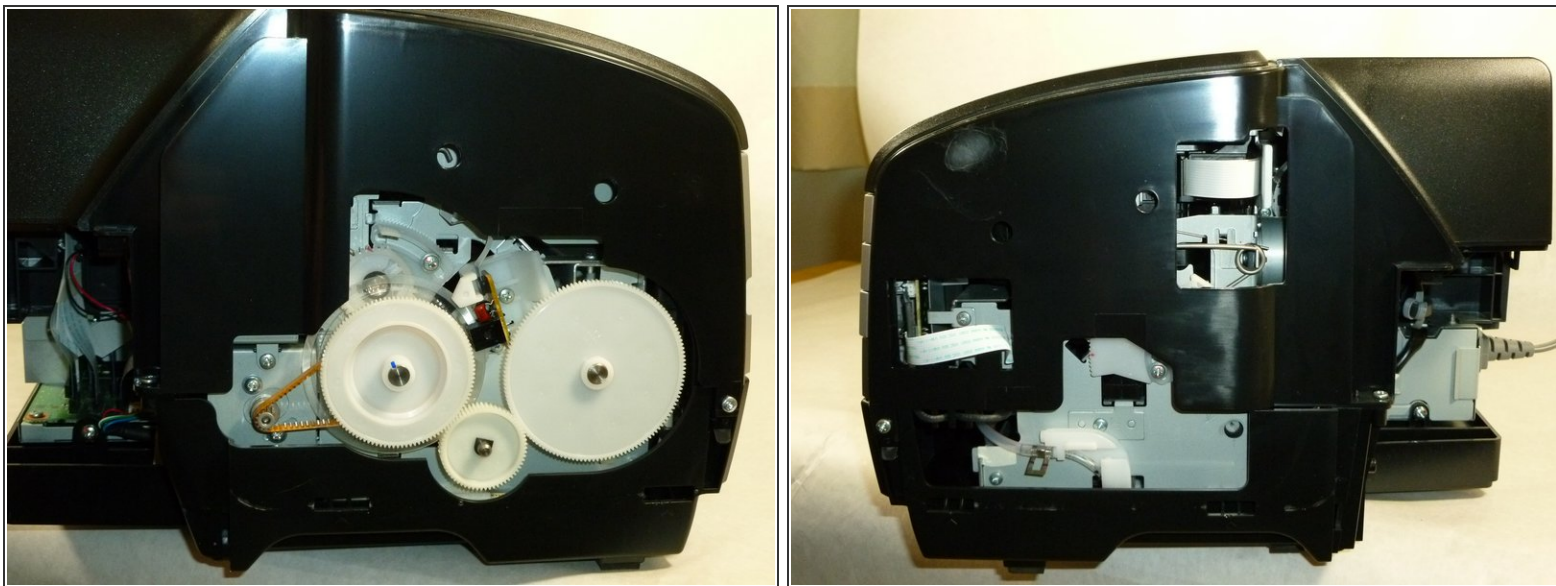
- Remove the rear housing by pulling it backwards.

Step 5



- Insert a plastic opening tool into the cutouts of the lower housing.
- Release the two tabs of the side housing by lifting the tool in an upward motion.
- Remove the side housing by pulling it outwards.

Step 6



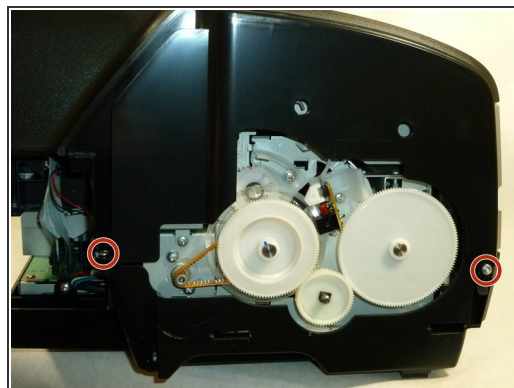
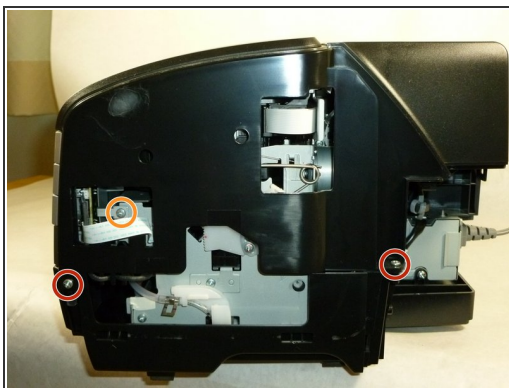
- ⓘ Both side housings are attached by the same type of mechanism.
- Using the same method, remove the other side housing.

Step 7



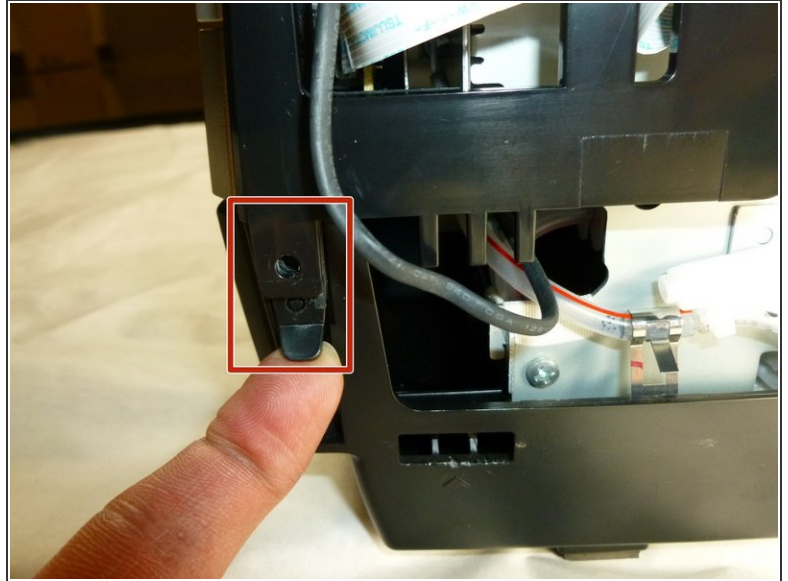
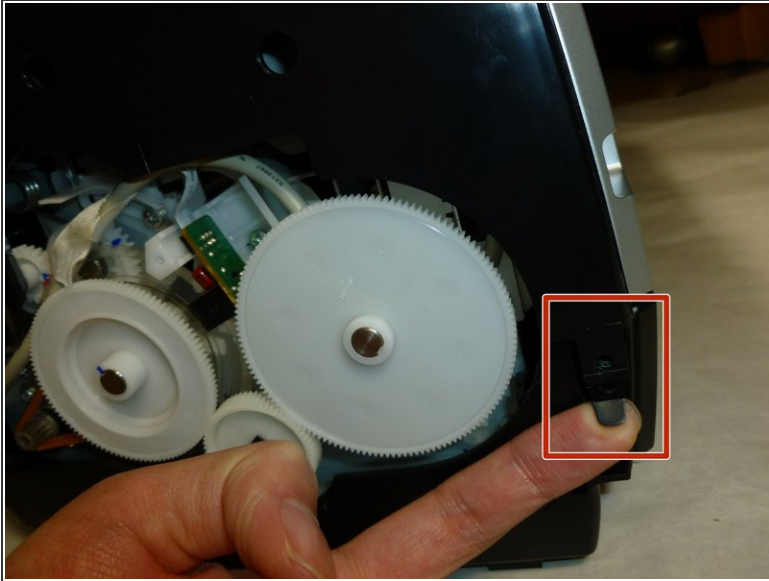
- Lift the paper support.
- Open the printer cover and front cover.

Step 8



- Remove the four 10 mm Phillips #2 screws from the sides of the printer.
- Remove the three 6 mm Phillips #2 screws.

Step 9



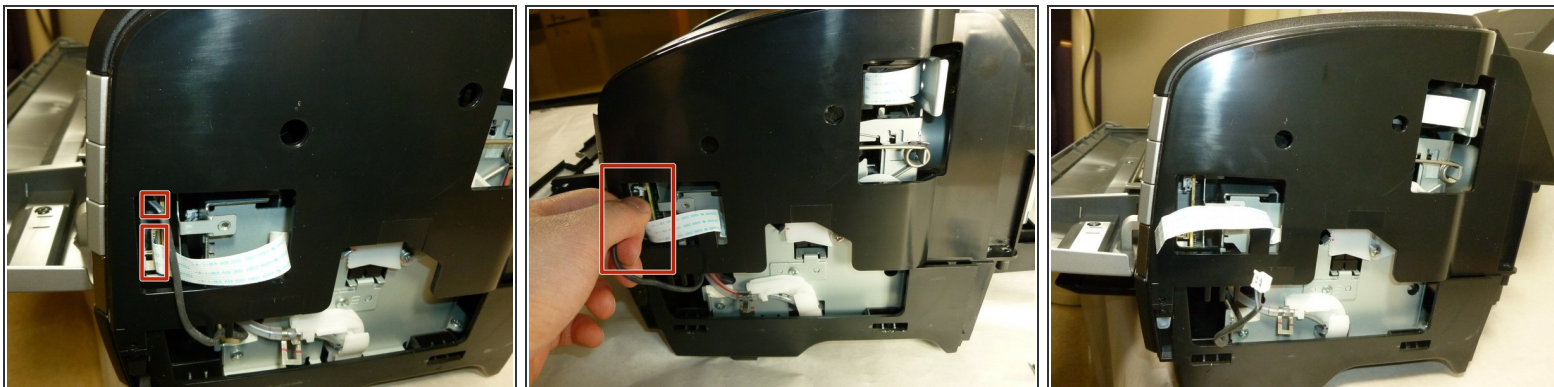
- Detach the tabs from the pins on each side by pulling it outwards.

Step 10



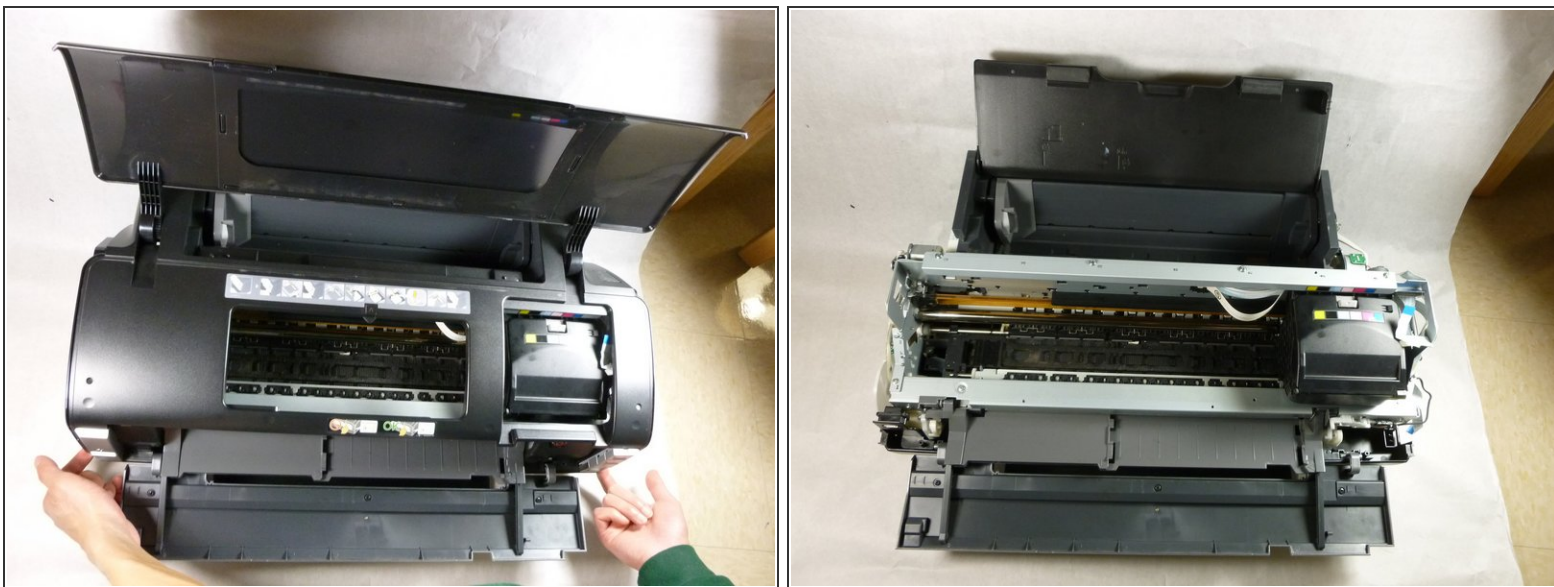
- Remove the two 10 mm Phillips #2 screws on the front of the printer.

Step 11



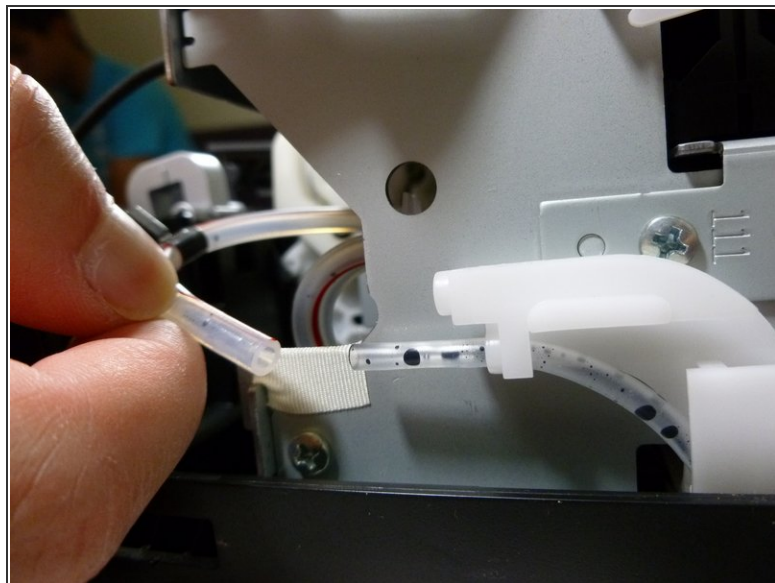
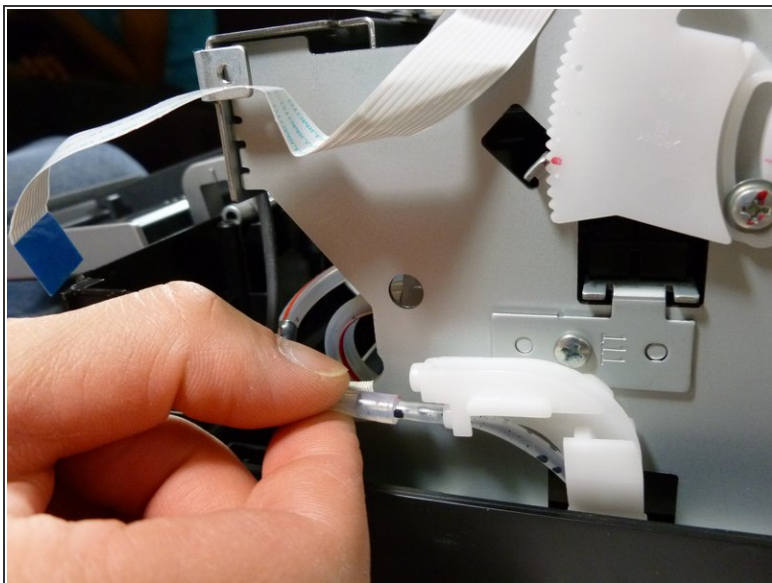
- Disconnect the two cables on the side by carefully pulling it outwards.
- ⓘ You may need to gently rock the two cables up and down while pulling.

Step 12



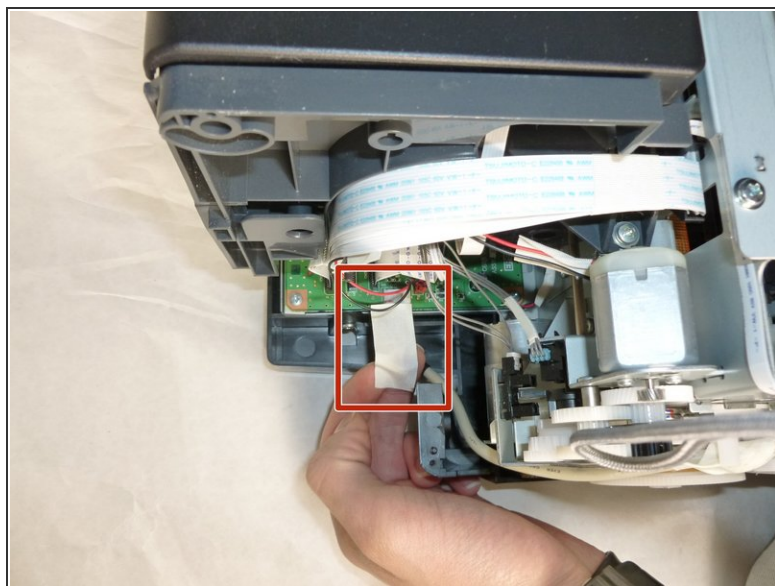
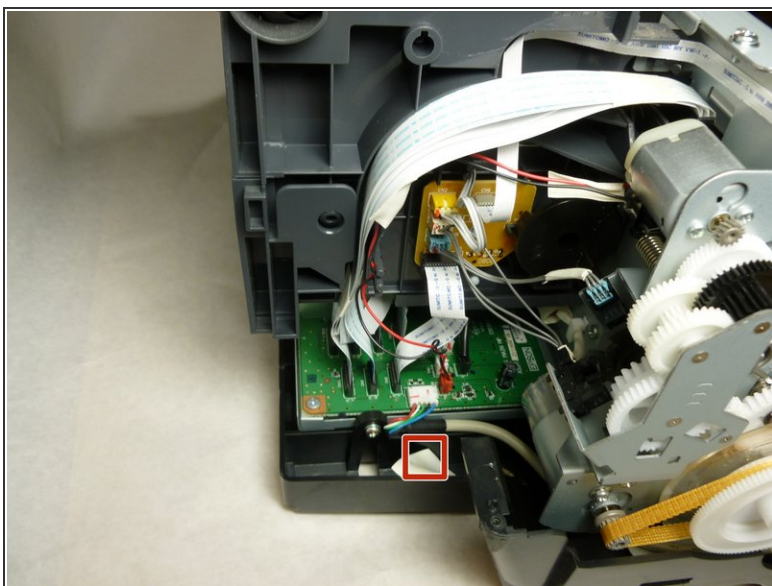
- Remove the upper housing by lifting it upwards.
- ⓘ It's easier to lift the housing by gripping it from the bottom.

Step 13 — Paper Eject Frame Assembly



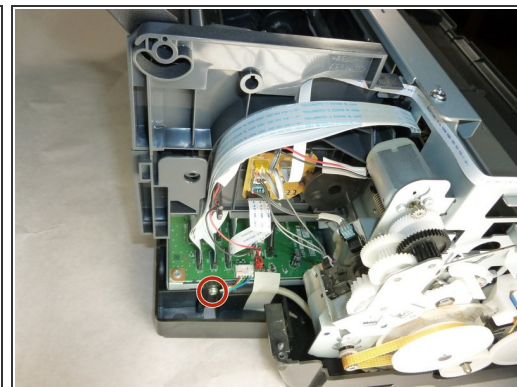
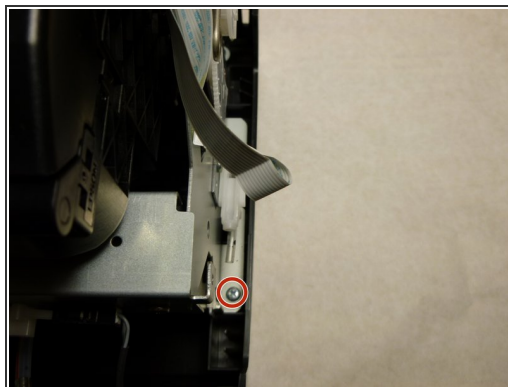
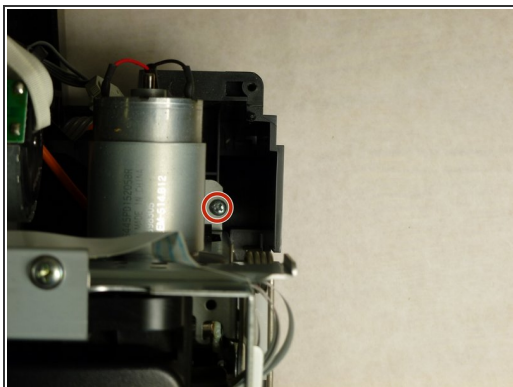
- Start by emptying the ink tube.
- Hold the left side of the ink tube in your hand.
- Pull the sides of the tube apart and empty the waste.


Step 14



- Remove the acetate tape that secures the connector cable.

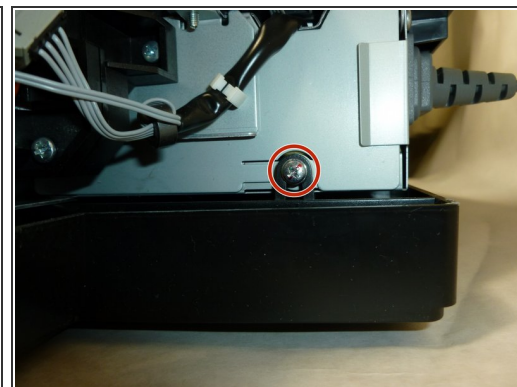
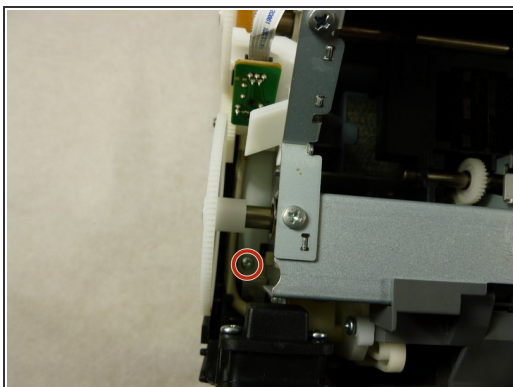
Step 15



 There are six screws that secure the printer mechanism.

- Remove the first three 10 mm screws that hold the printer mechanism in place using a Phillips #2 screwdriver.

Step 16



- Remove the other three 10 mm screws that secure the printer mechanism using a Phillips #2 screwdriver.

Step 17



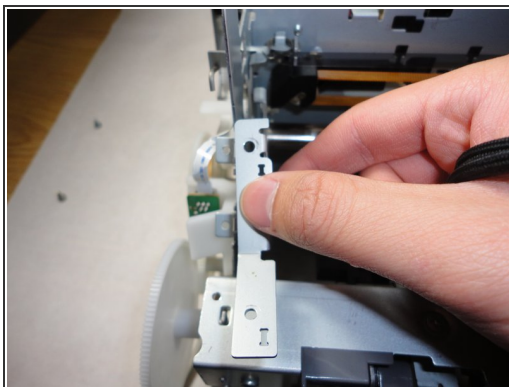
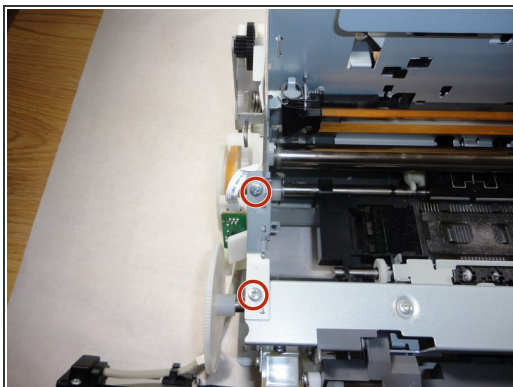
- The printer mechanism is located on the lower housing.
- Remove the mechanism by holding the handles and lifting upwards.

Step 18



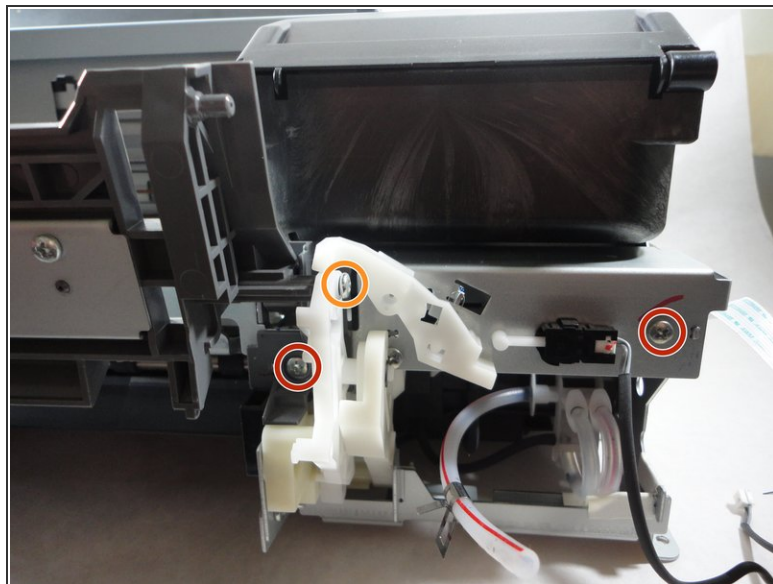
- Remove the CD-R unit housing. Release the two attaching points to the tray base and then pull out the unit diagonally one side at a time.

Step 19



- Detach the left frame support plate. Start by removing the two 6 mm screws that secure it and then pull it out by hand.


Step 20



- Remove the four 6 mm screws using the Phillips #2 screwdriver.
- Remove the two 8 mm screw using a Phillips #2 screwdriver.
- ⓘ The screws are located on the lower sections of the printer.

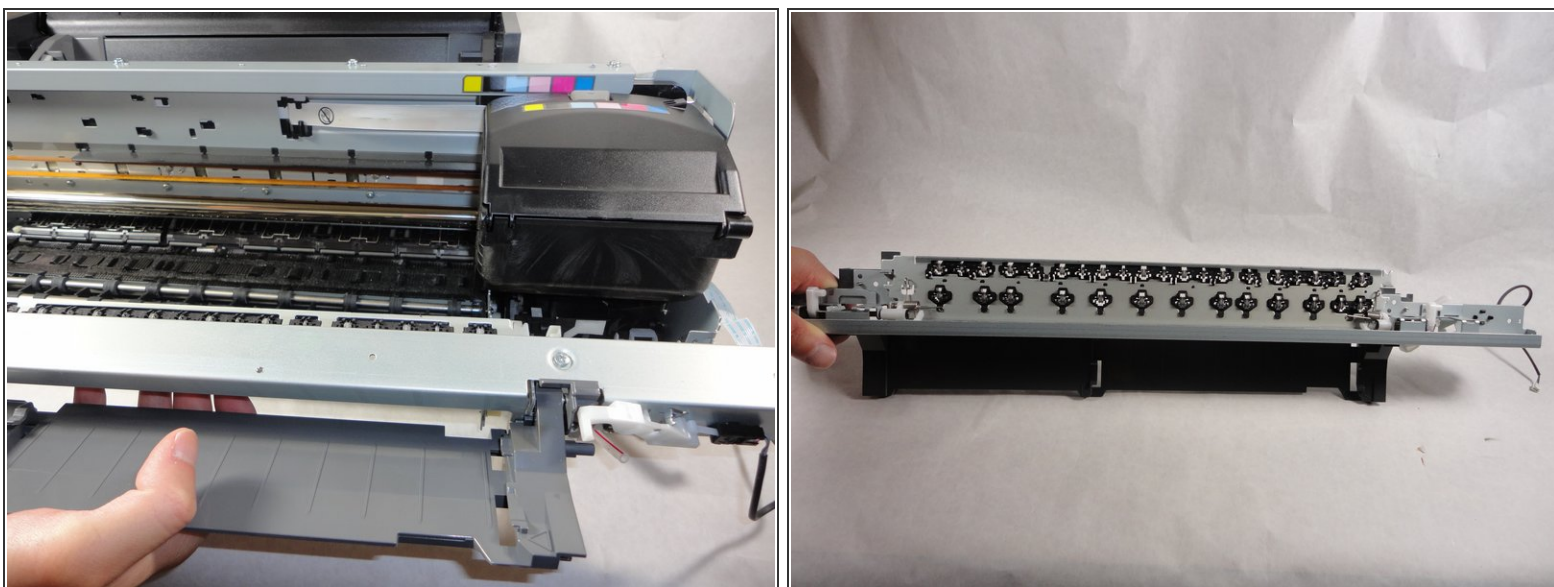
Step 21



 Two guide pins secure the paper eject assembly in place.

- Pull out the two guide pins on the CD/DVD tray base.

Step 22



- Remove the paper eject frame assembly by pulling it towards you.

To reassemble your device, follow these instructions in reverse order.