



LG K10 Loudspeaker Replacement

This video shows you how to repair LG K10 broken,damaged,doesn't work,not responding loudspeaker replacement.

Written By: Witrigs



INTRODUCTION

This repair guide will teach you how to replace the loudspeaker component for an LG K10.



TOOLS:

- [Phillips #00 Screwdriver](#) (1)
- [iFixit Opening Picks set of 6](#) (1)
- [Tweezers](#) (1)



PARTS:

- [LG K10 Loudspeaker Replacement](#) (1)

Step 1 — Loudspeaker



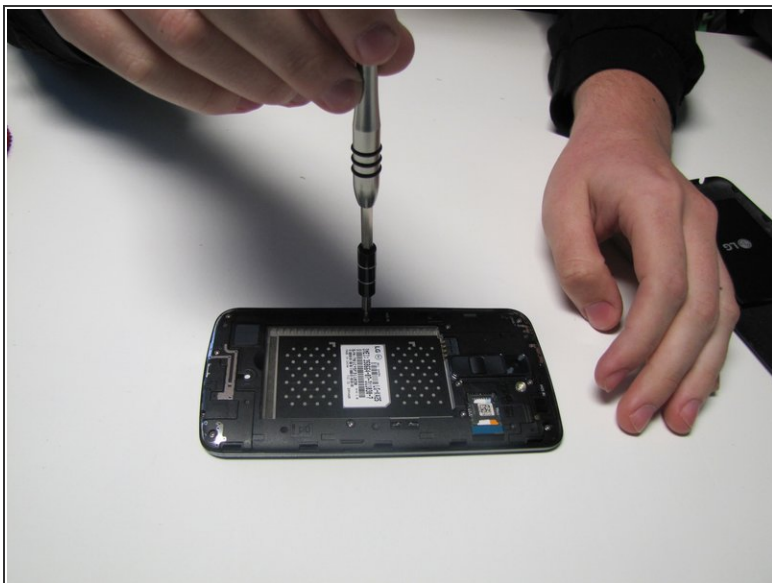
- Power off the device.
- Remove the back case.

Step 2



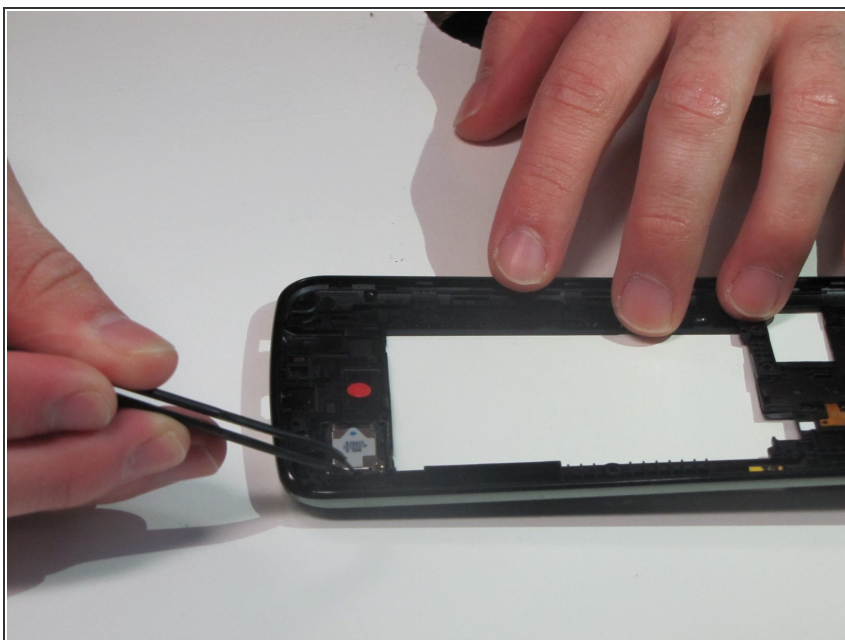
- Remove the battery

Step 3



- Unscrew all of the mid-frame screws, and use opening picks or a plastic opener to carefully remove the frame.

Step 4



- With tweezers remove the loudspeaker from the mid-frame.
- ⓘ The loudspeaker is attached to the mid-frame with a thin layer of adhesive and should break free without much force.

To reassemble your device, follow these instructions in reverse order.

This document was generated on 2020-11-15 06:52:58 AM (MST).

