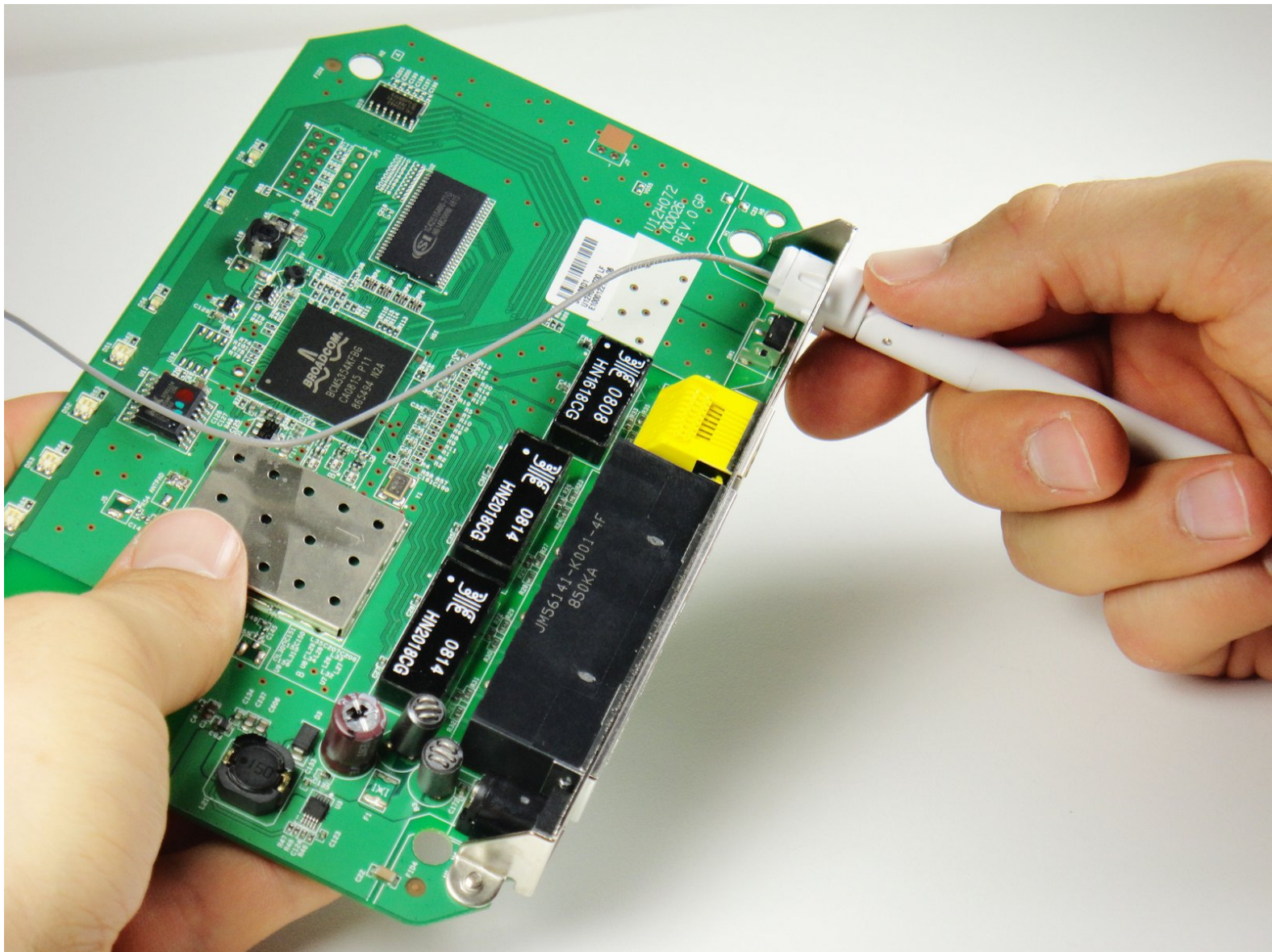




# Netgear WGR614v9 Antenna Replacement

Replacing the antenna may fix problems involving connectivity.

Written By: Ryan Murphy



# INTRODUCTION

This guide will take you through the process involved with installing an antenna. De-soldering and soldering will be required.

---

## TOOLS:

- [Desoldering Braid](#) (1)
  - [iFixit Opening Tools](#) (1)
  - [Solder](#) (1)
  - [Soldering Workstation](#) (1)
  - [T8 Torx Screwdriver](#) (1)
-

## Step 1 — Lower Case



- ① Rotate the device so that the bottom is facing up.

## Step 2



- Lift up all four rubber pads on the bottom of the router with the plastic opening tool.

- ① Be careful not to pull the rubber pads all the way out when lifting as they are difficult to reinsert.

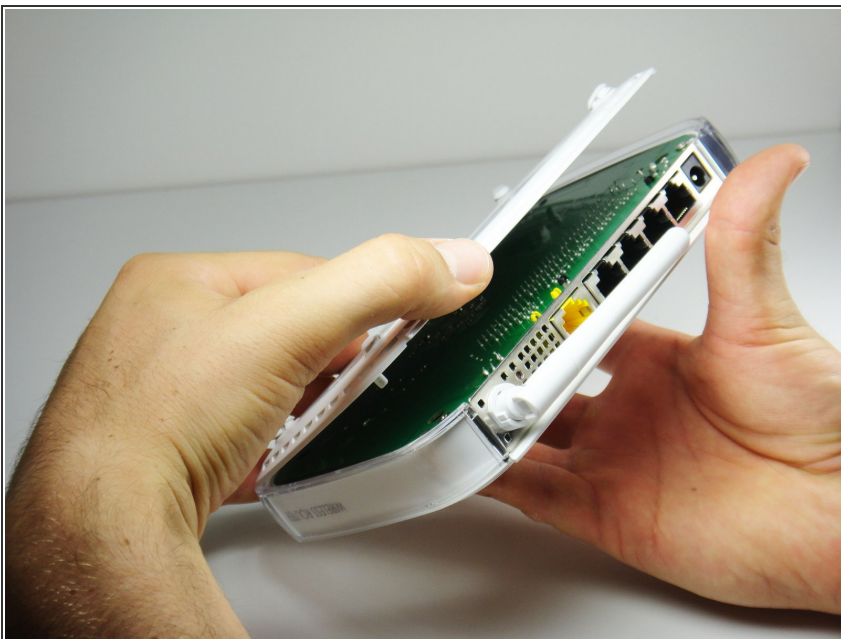


### Step 3



- Unscrew the four 11.8 mm T-8 torx screws from the bottom of the router.

### Step 4



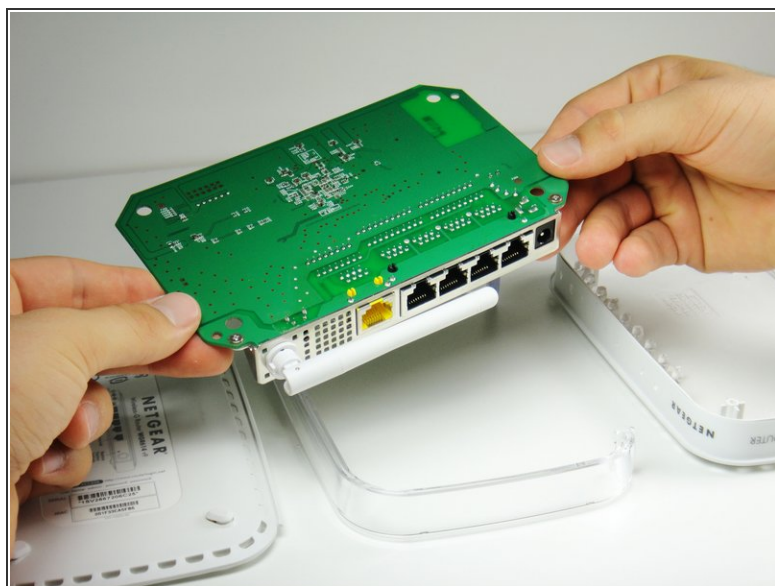
- Lift the bottom casing straight up from the router.

## Step 5 — Motherboard



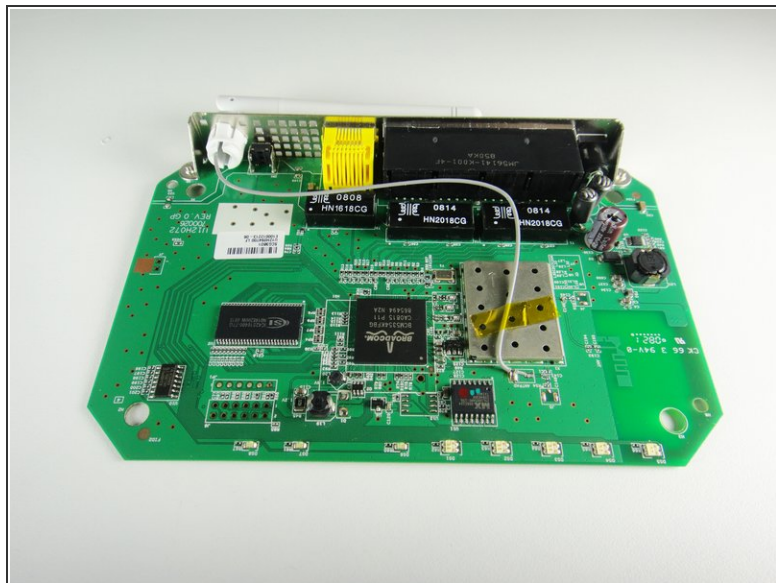
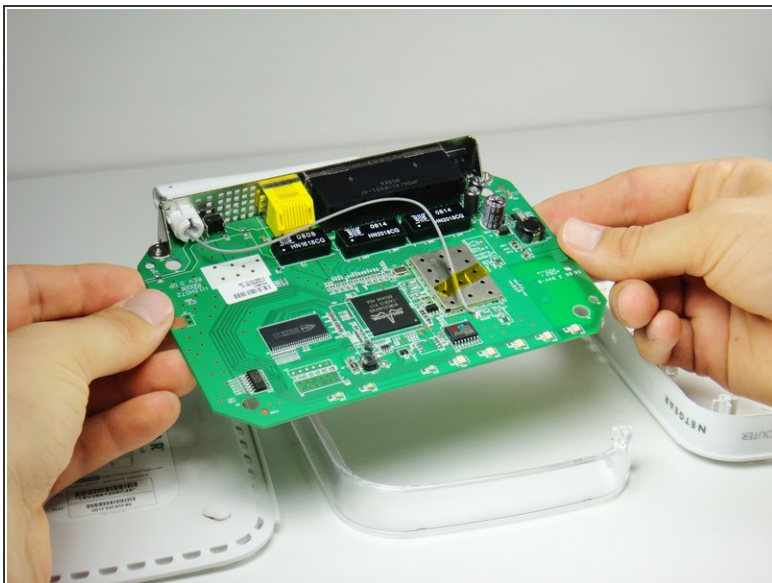
- Remove the clear plastic casing by lifting it straight up from the router.

## Step 6



- Separate the motherboard from the top shell by lifting it straight up from the router.

## Step 7 — Antenna

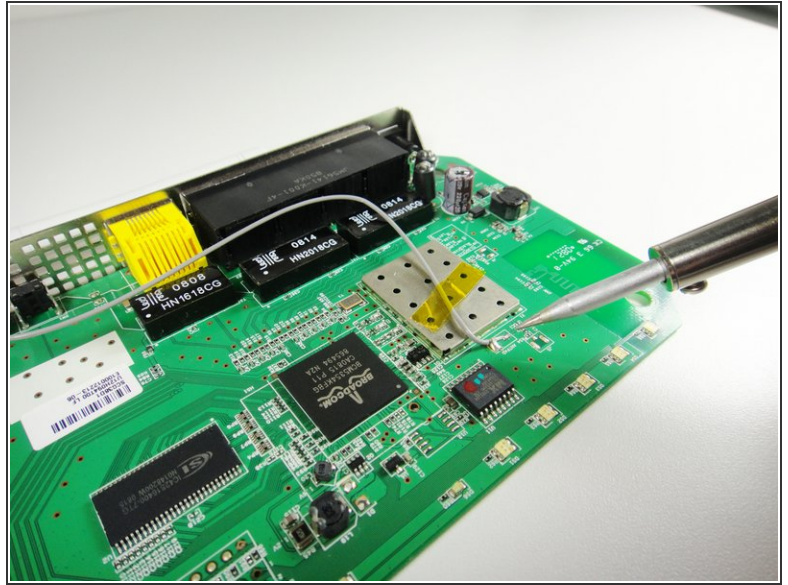
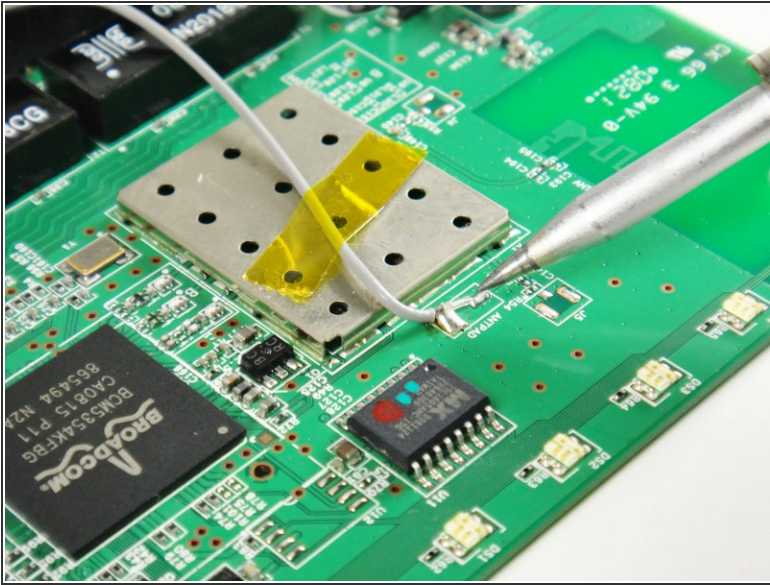


**i** Rotate the motherboard so that the top is facing up.

- Set the motherboard on a flat clean surface.

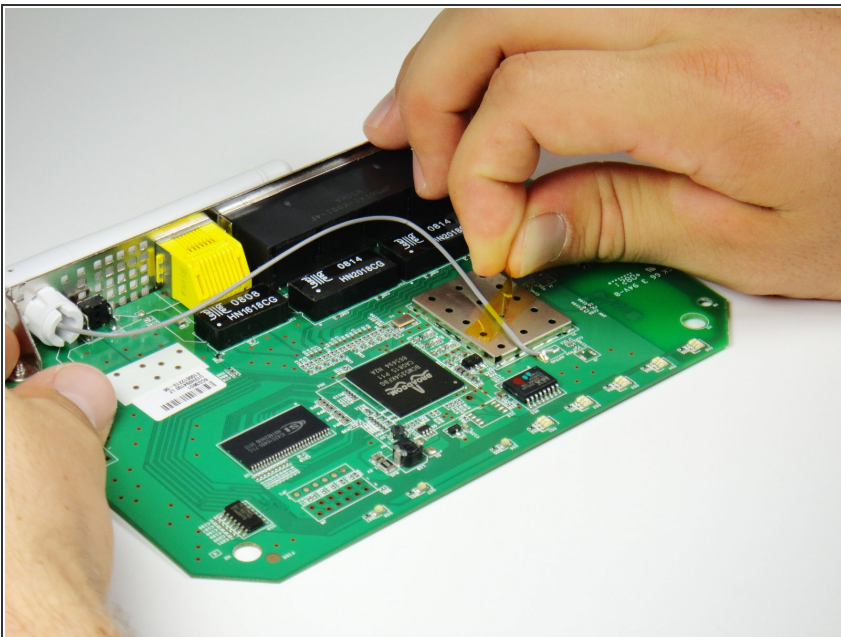


## Step 8



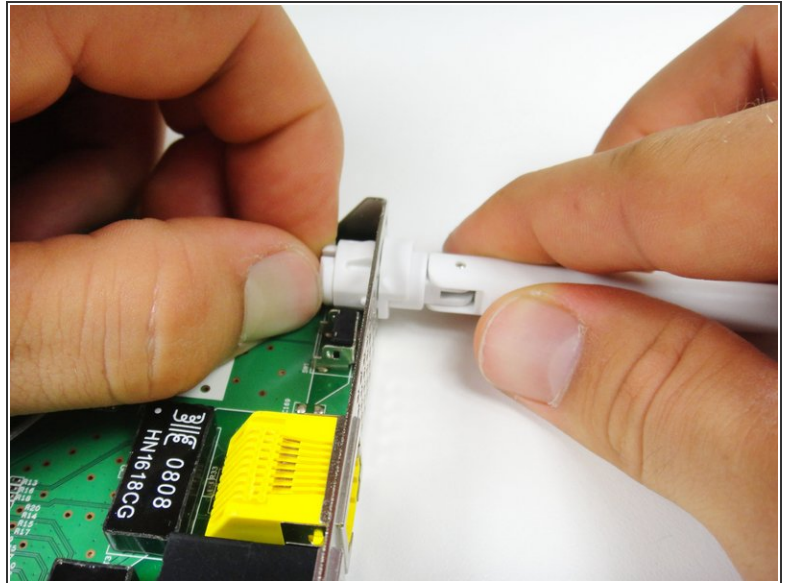
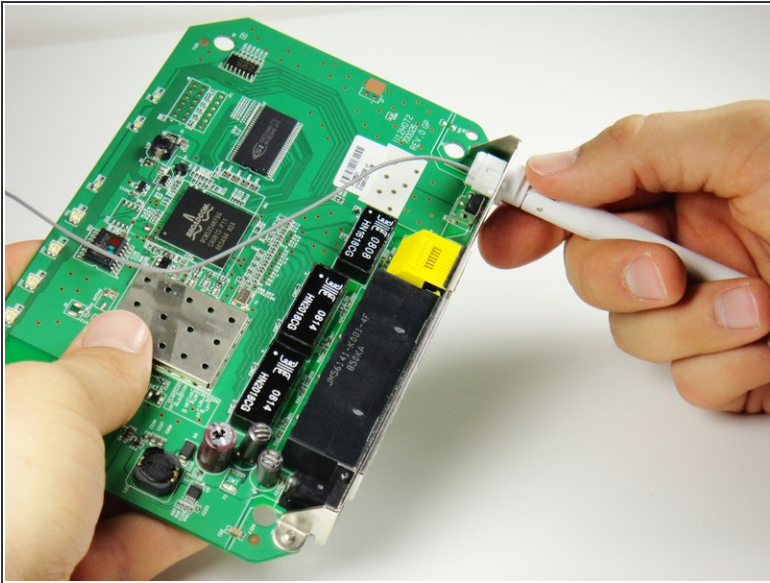
- i** Do not refer to the pictures in this step for proper de-soldering and soldering techniques. They are for illustration purposes only.
- Refer to this [link](#) for proper de-soldering and soldering techniques.
- i** Be patient. This may take some time depending on the quality of your soldering iron.

## Step 9



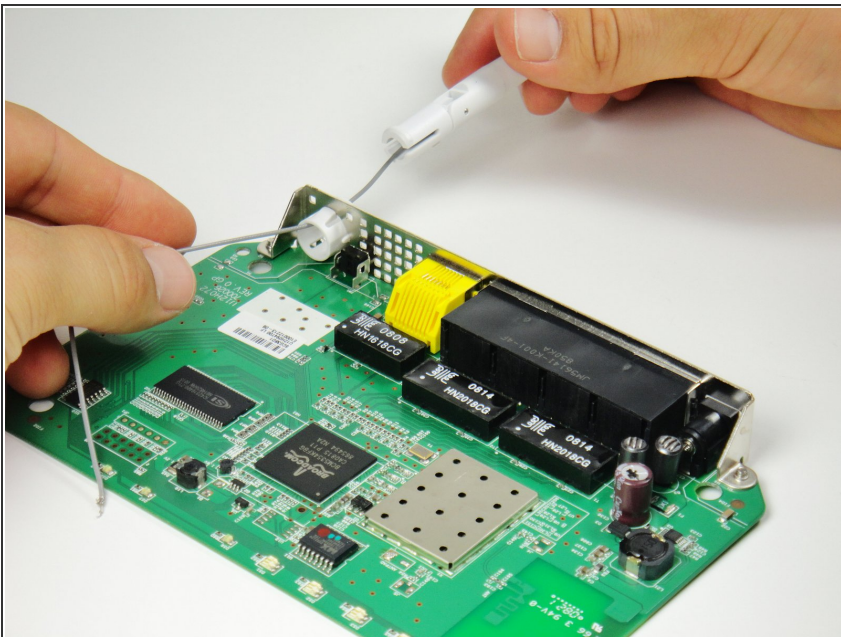
- Peel off the yellow tape holding the wires.
- Set the tape aside on a clean surface so that it can be reused.

## Step 10



- i Extend the antenna outwards from the device so that it is straight.
- Locate the clips that hold the antenna onto the router.
- i Push the clips in with one hand and pull the antenna out with your other hand. Slightly twist the antenna until it becomes free from the hole.

## Step 11



- Pull out the antenna as well as the connected wire.



To reassemble your device, follow these instructions in reverse order.