



TiVo Series 2 TCD24008A Remote Sensor Replacement

Replace the remote sensor in the front of your TiVo.

Written By: Shauna



INTRODUCTION

In case your remote just won't work and you have already tried replacing the batteries, this guide will walk you through removing the front cover and replacing the remote sensor on the inside of the cover.



TOOLS:

- [T9 Torx Screwdriver](#) (1)
-

Step 1 — Cover



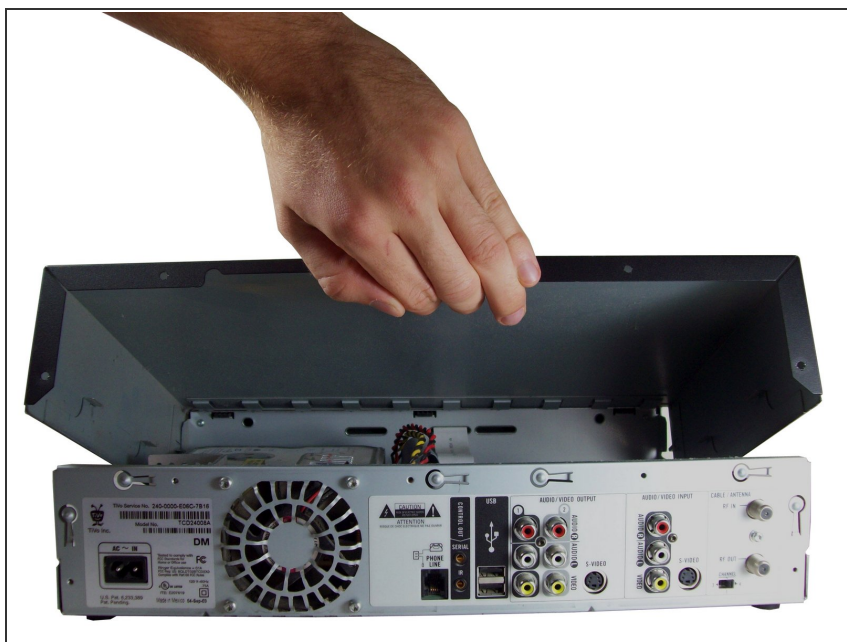
- Unscrew the five 0.31 inch T-9 screws on the back cover.

Step 2



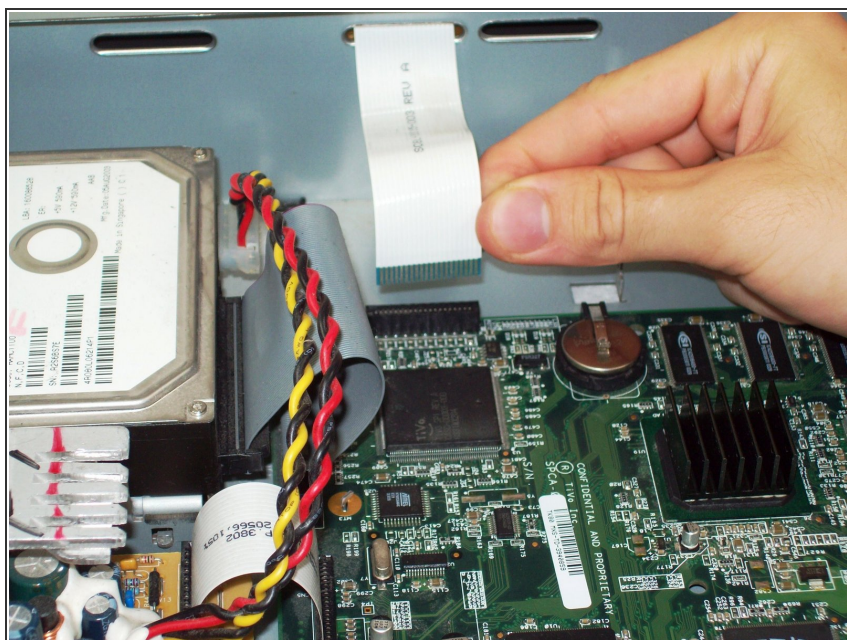
- Slide the cover towards the back until it is no longer under the front cover.

Step 3



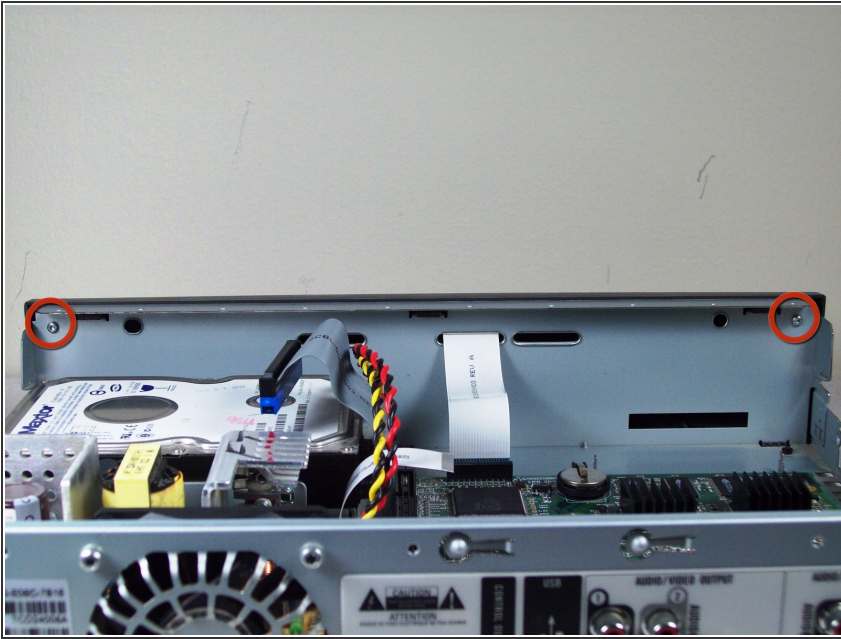
- Lift the cover up and off the device.

Step 4 — Remote Sensor



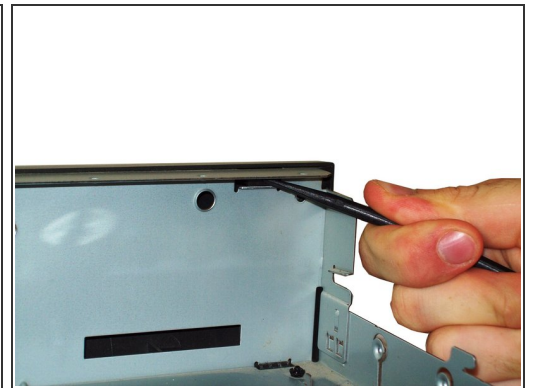
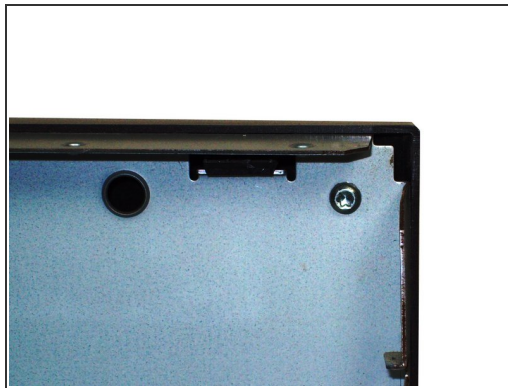
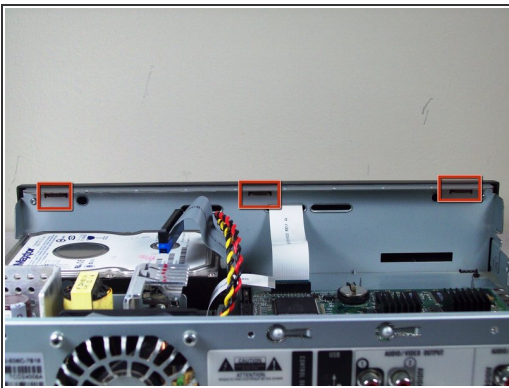
- Unplug the ribbon cable from the motherboard. Some force may be required for this step, so be careful not to rip the ribbon cable.

Step 5



- Unscrew the two 0.31 inch T-9 screws on the inside of the front cover.

Step 6



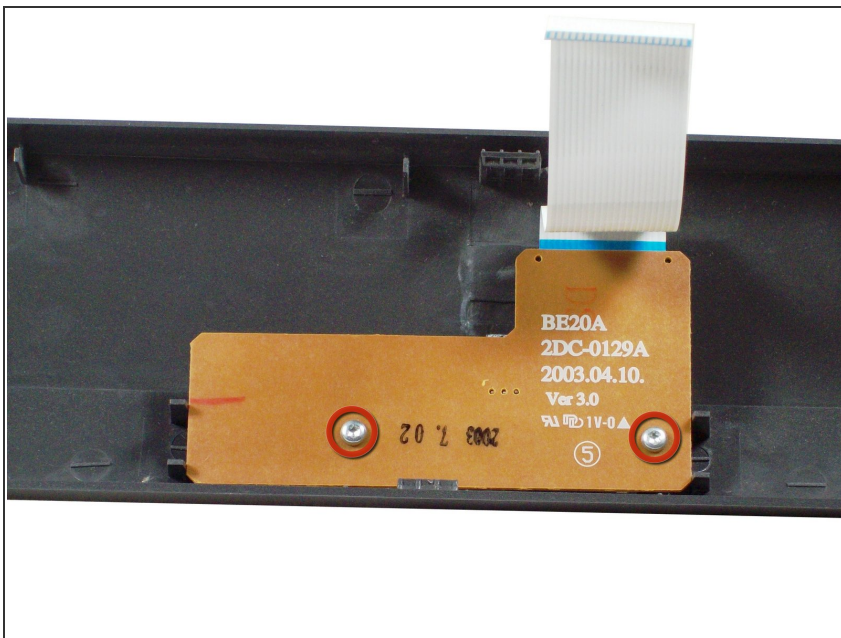
- Use a spudger to push the three tabs on the inside of the front cover up and forward to release the cover.

Step 7



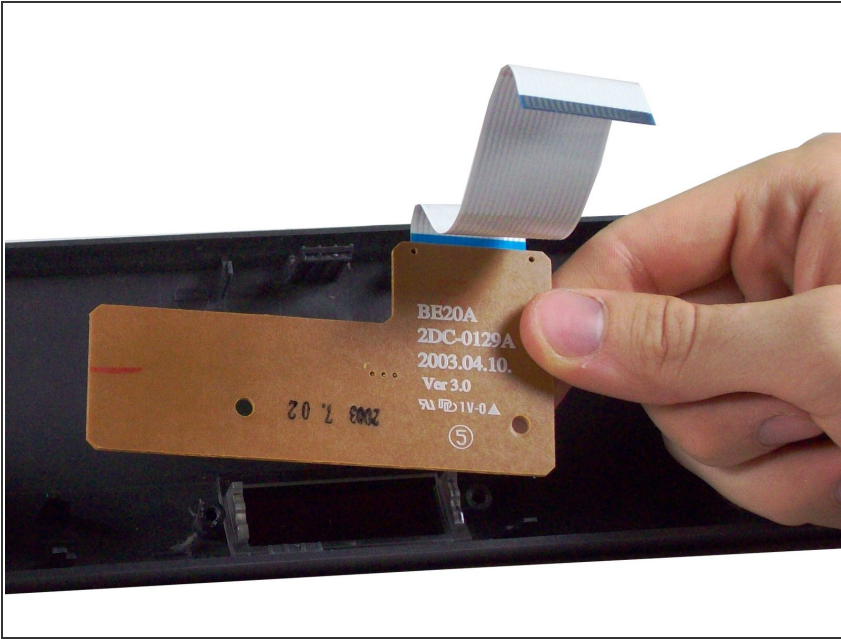
- ⚠ Pull the front cover down and away from the device to separate it completely. Be careful not to tear the ribbon cable as you are removing the front cover.

Step 8



- Unscrew the two 0.31 inch T-9 screws on the back of the sensor.

Step 9



- Lift the sensor up to remove it.

To reassemble your device, follow these instructions in reverse order.