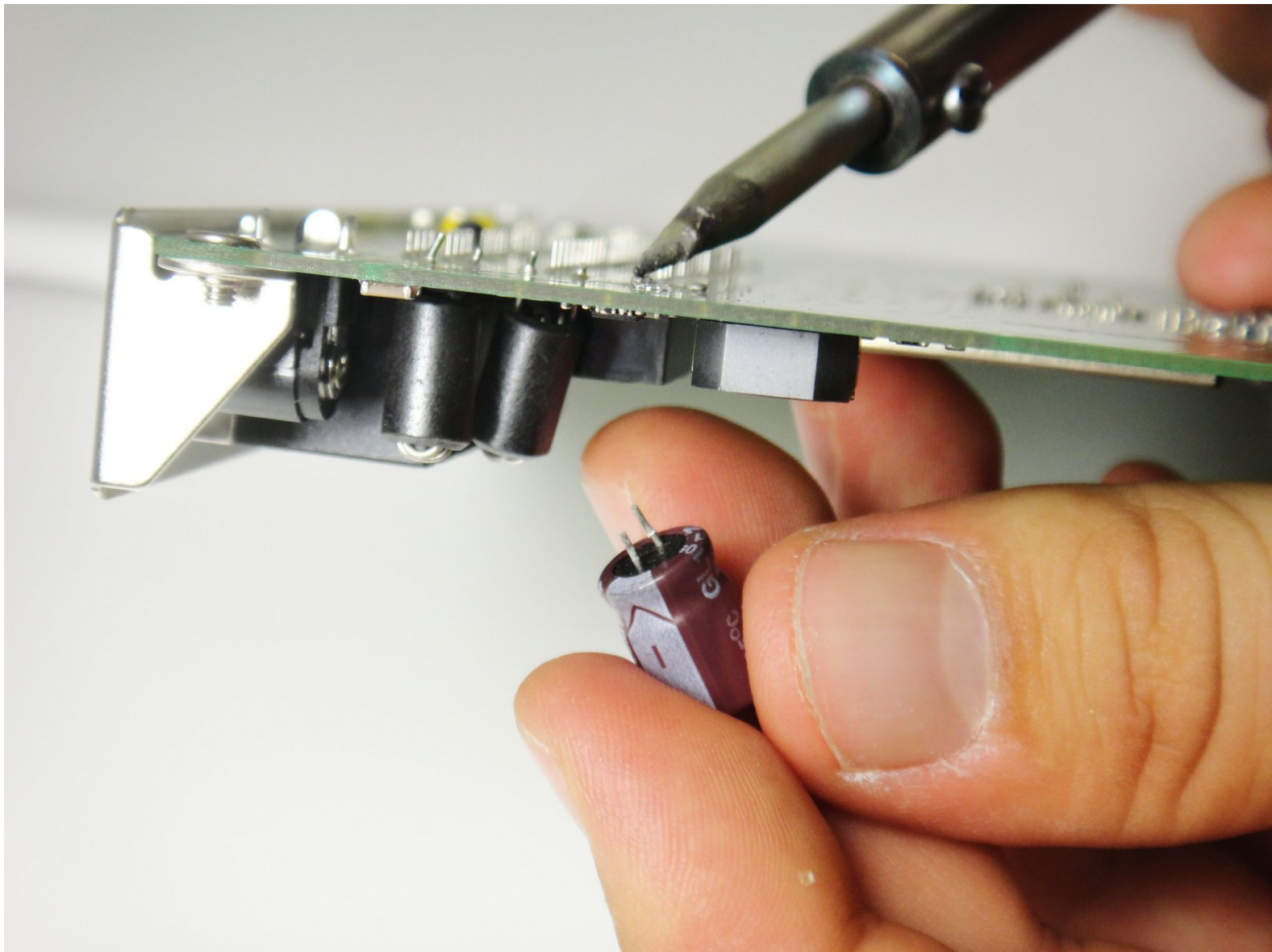




# Netgear WGR614v9 Capacitor Replacement

Repairing the the capacitor will eliminate unwanted buzzing noises.

Written By: Kyle Moore



# INTRODUCTION

This guide will take you through the process involved with removing a capacitor. De-soldering and soldering will be required.

---

## TOOLS:

- [Desoldering Braid](#) (1)
  - [iFixit Opening Tools](#) (1)
  - [Solder](#) (1)
  - [Soldering Workstation](#) (1)
  - [T8 Torx Screwdriver](#) (1)
-

## Step 1 — Lower Case



- ⓘ Rotate the device so that the bottom is facing up.

## Step 2



- Lift up all four rubber pads on the bottom of the router with the plastic opening tool.

- ⓘ Be careful not to pull the rubber pads all the way out when lifting as they are difficult to reinsert.

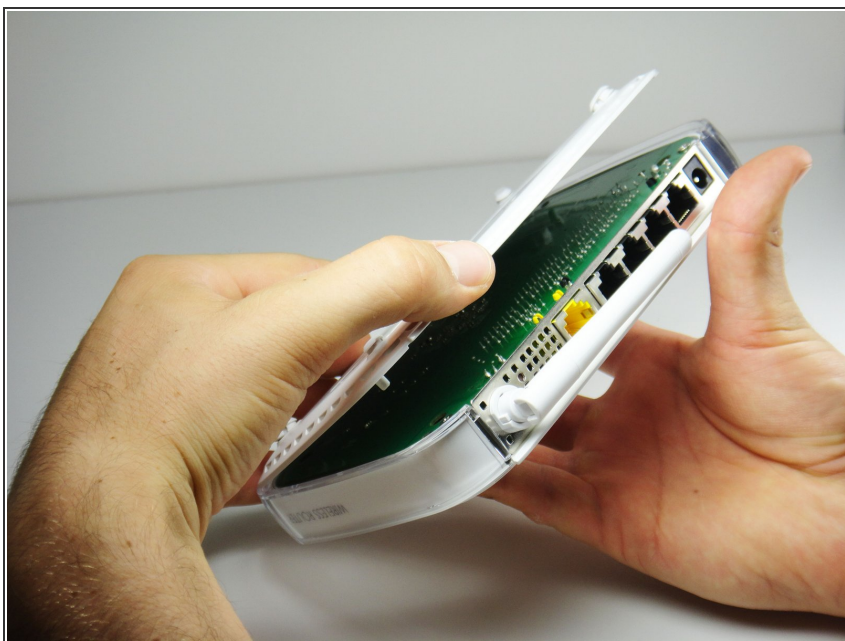


## Step 3



- Unscrew the four 11.8 mm T-8 torx screws from the bottom of the router.

## Step 4



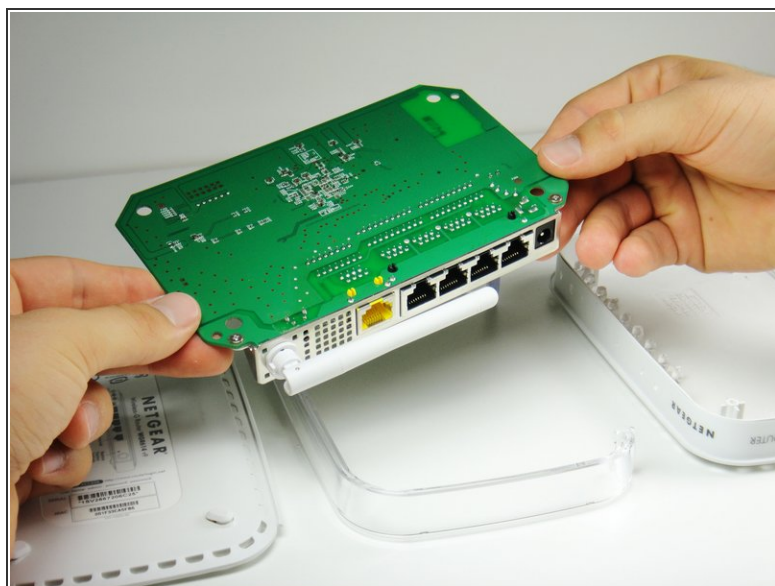
- Lift the bottom casing straight up from the router.

## Step 5 — Motherboard



- Remove the clear plastic casing by lifting it straight up from the router.

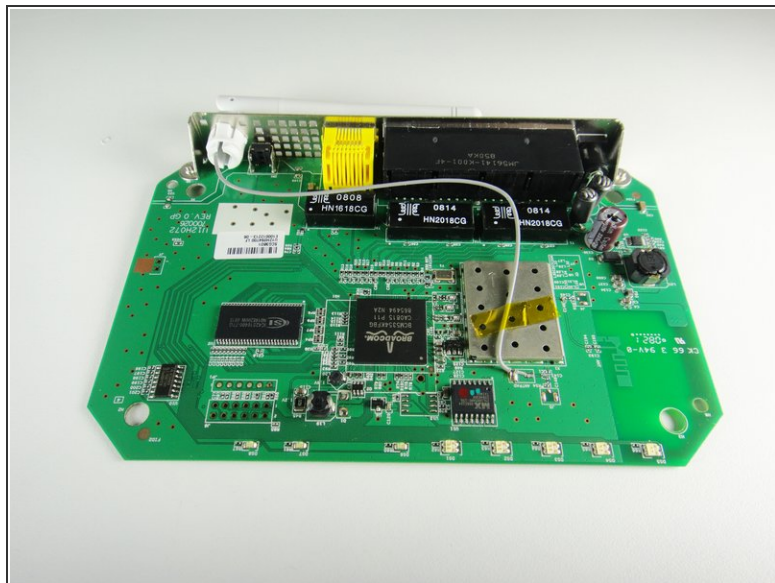
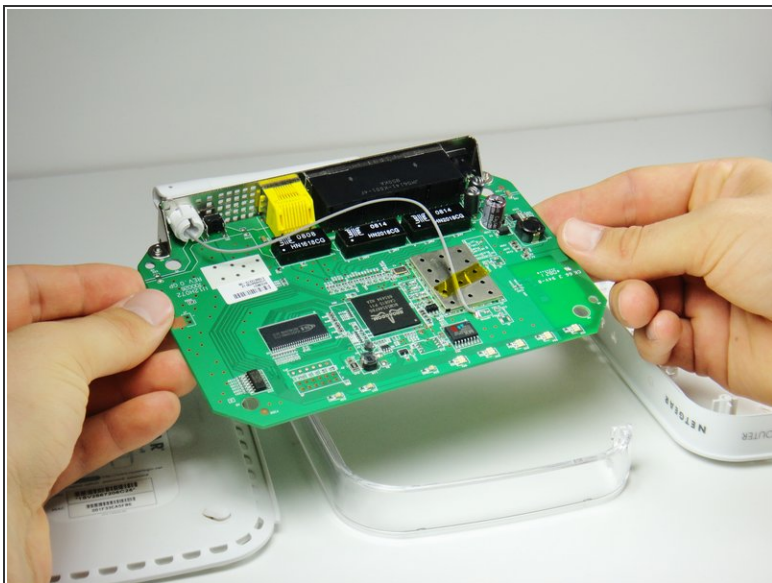
## Step 6



- Separate the motherboard from the top shell by lifting it straight up from the router.



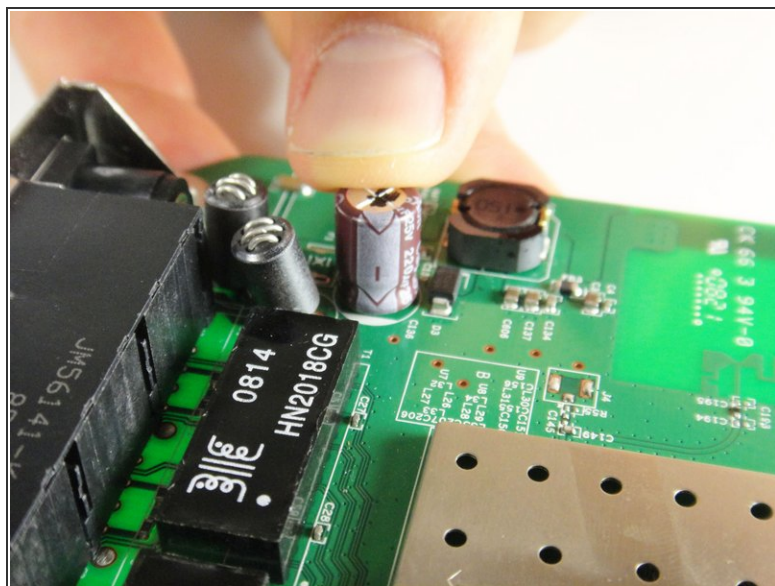
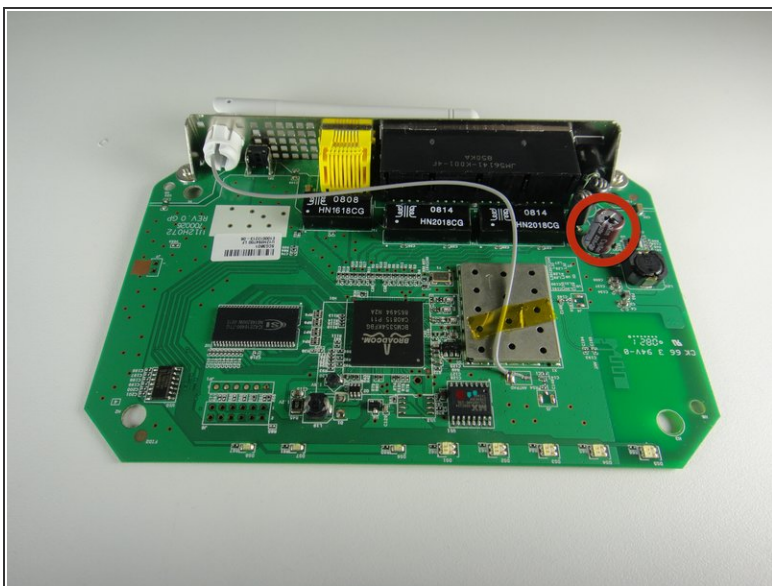
## Step 7 — Capacitor



**i** Rotate the motherboard so that the top is facing up.

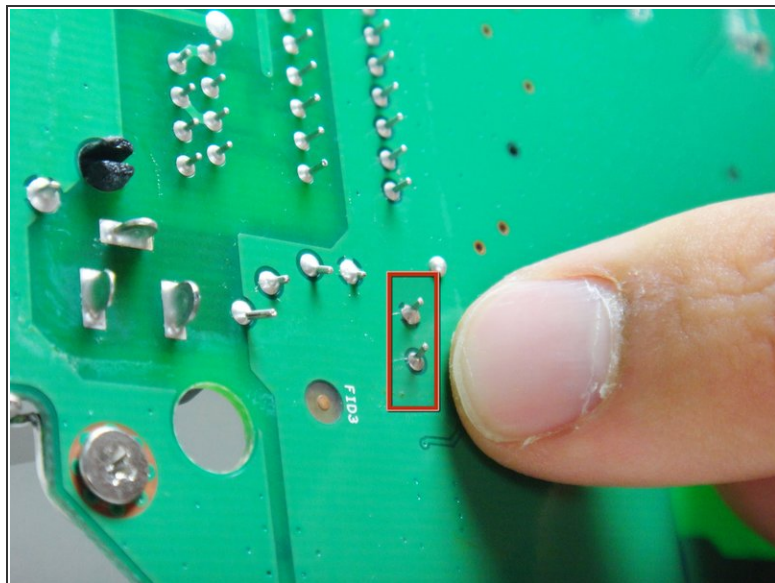
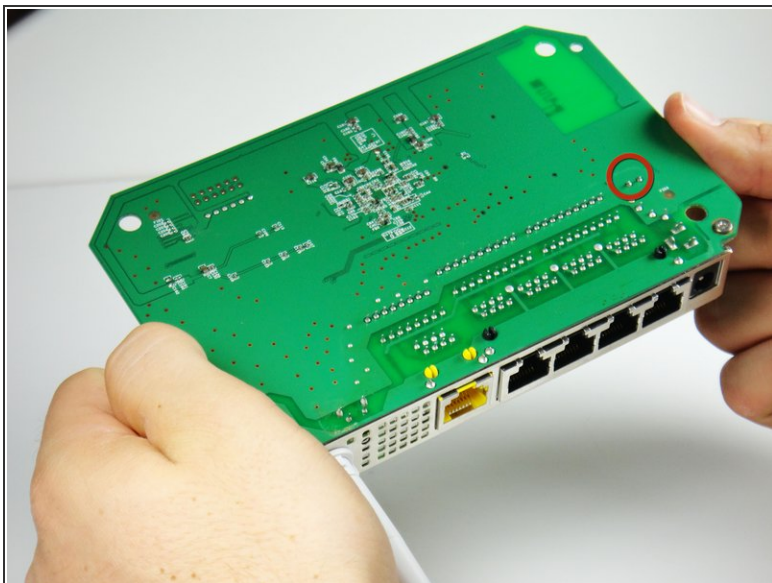
- Set the motherboard on a flat clean surface.


## Step 8



- The capacitor can be found at the location shown.

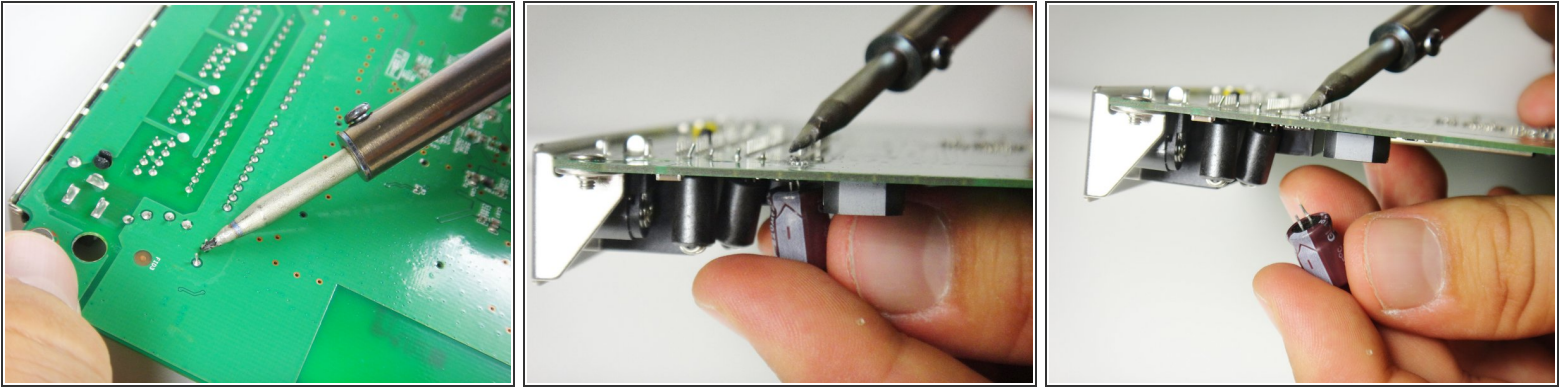
## Step 9



 Rotate the motherboard so that the bottom is facing up.

- Locate the two soldered contacts of the capacitor.

## Step 10



- ⓘ Rotate the motherboard 180 degrees.
- ⓘ Do not refer to the pictures in this step for proper de-soldering and soldering techniques. They are for illustration purposes only.
  - Refer to this [link](#) for proper de-soldering and soldering techniques.
  - Pull the capacitor from the other side of the circuit board once the solder is liquified.
- ⓘ To replace the capacitor, orient the negative side of the capacitor (indicated by a white stripe and a negative sign) so that it aligns with the shaded white region of the circle indicating the capacitor's position on the motherboard.

To reassemble your device, follow these instructions in reverse order.