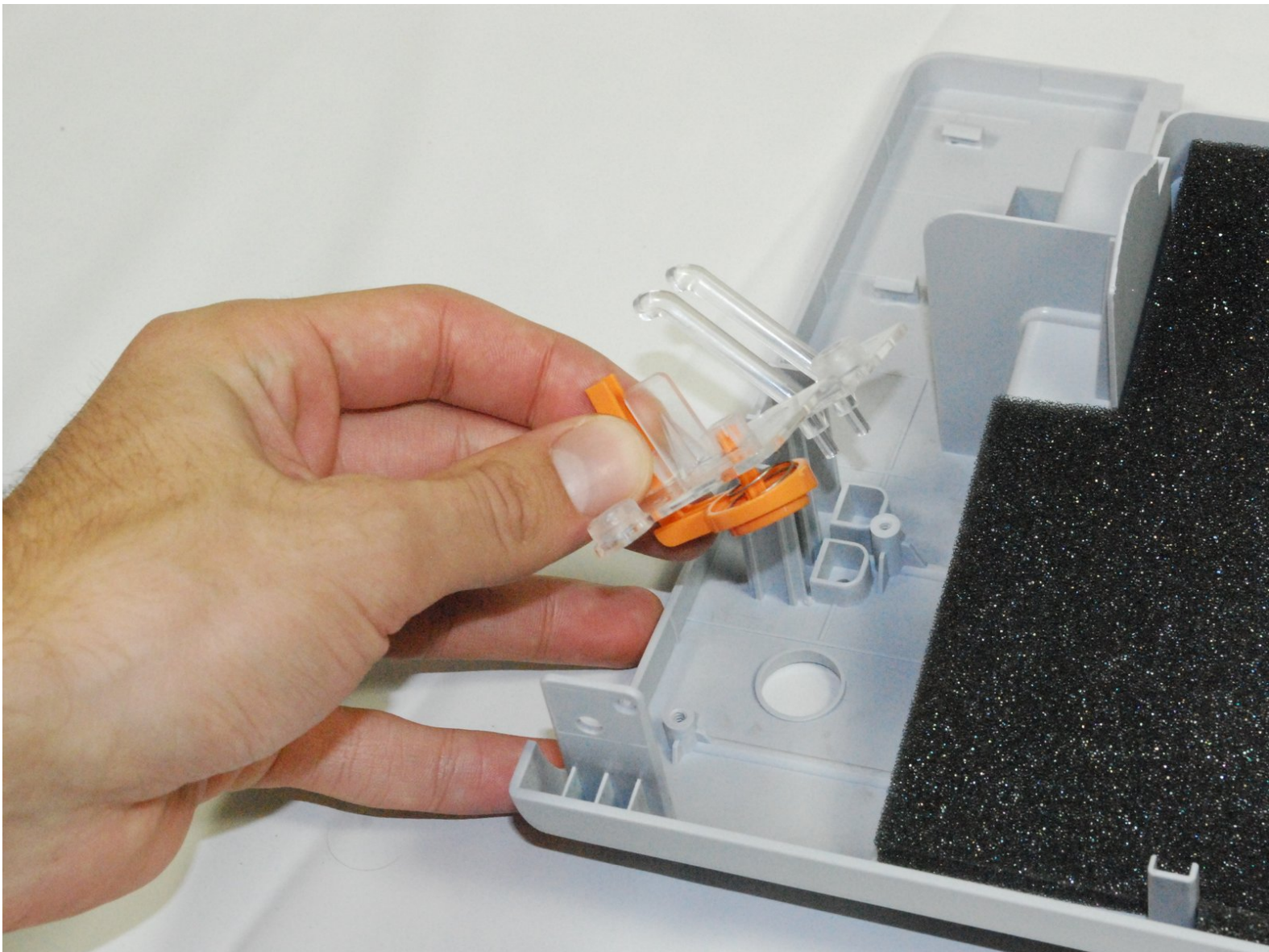




Samsung ML2510 Power Button Replacement

This guide will teach the user to access and replace the power button on the top of the Samsung ML2510 laser printer.

Written By: bbaustin



INTRODUCTION

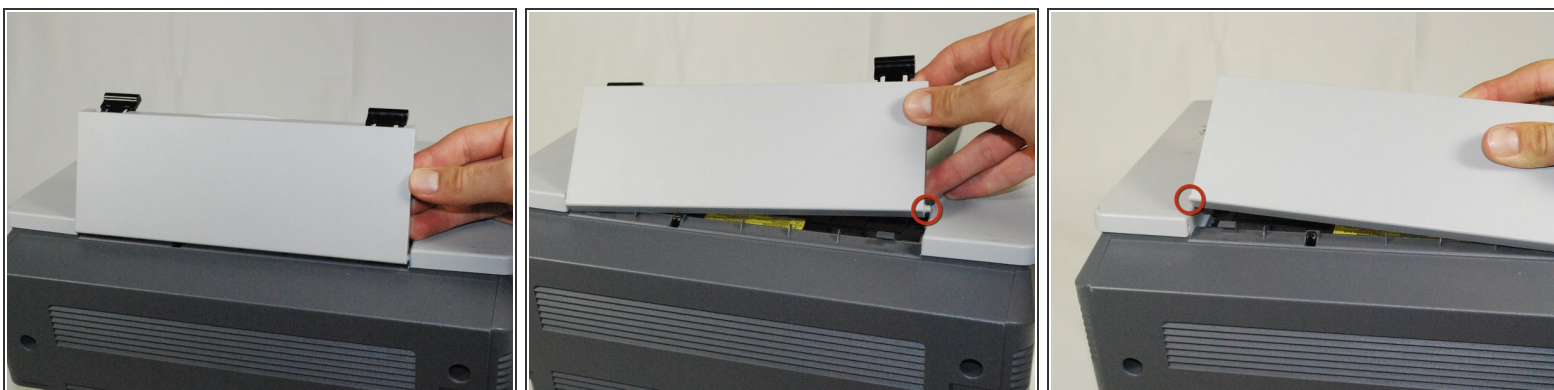
This guide will help you to replace the power button of your Samsung ML2510 laser printer.



TOOLS:

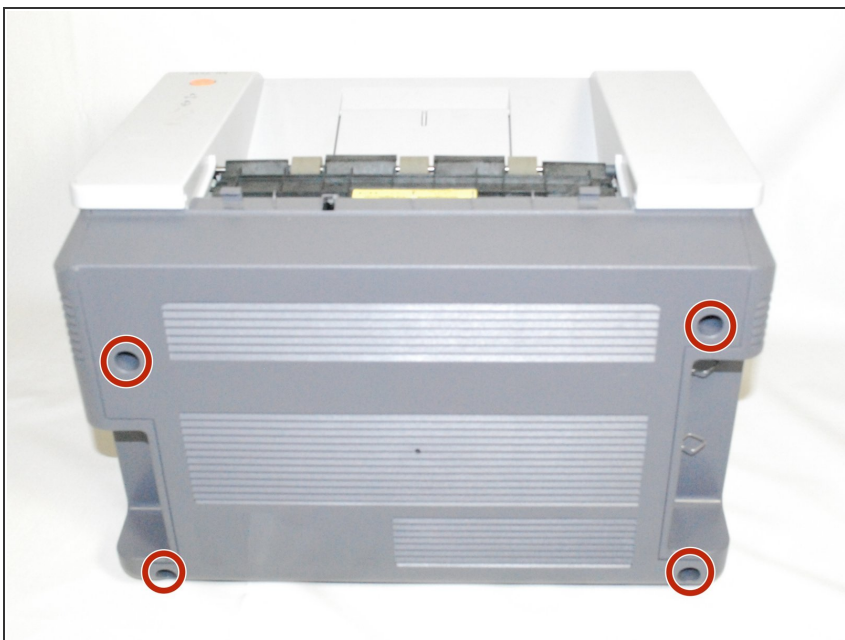
- [iFixit Opening Tools](#) (1)
 - [Phillips #2 Screwdriver](#) (1)
-

Step 1 — Removing Samsung ML2510 Back Panel



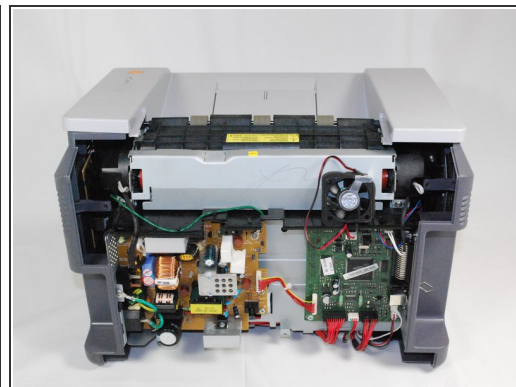
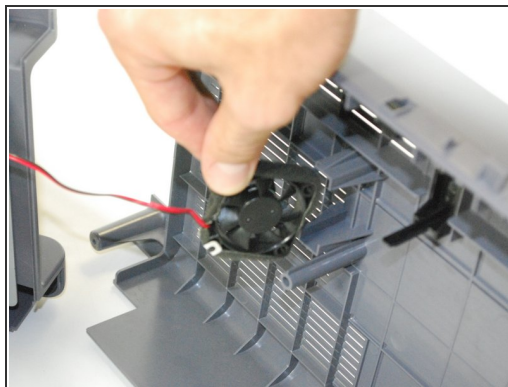
- Remove the top hinged panel by taking out the pins at the bottom of this panel.

Step 2




- Using a Phillips #2 screwdriver, remove the four screws on the back of the printer.

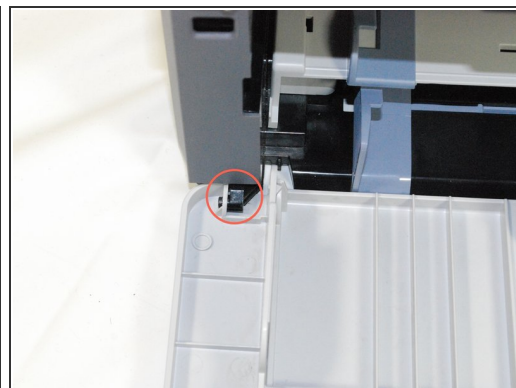
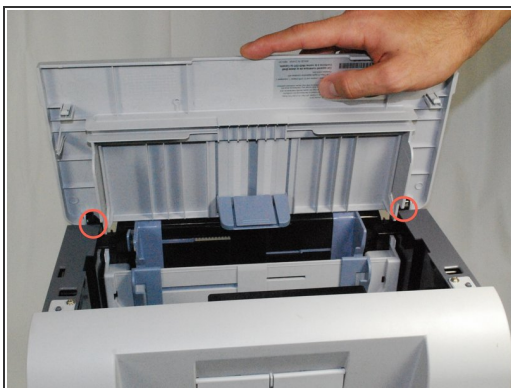
Step 3



- Gently lift the top panel while simultaneously pulling off the back panel.

 Before pulling out the back panel entirely, make sure to remove the rear cooling fan from its slot.

Step 4 — Power Button



- Remove the front panel by gently separating the holes on the panel from the pegs attached to the main printer body.

Step 5



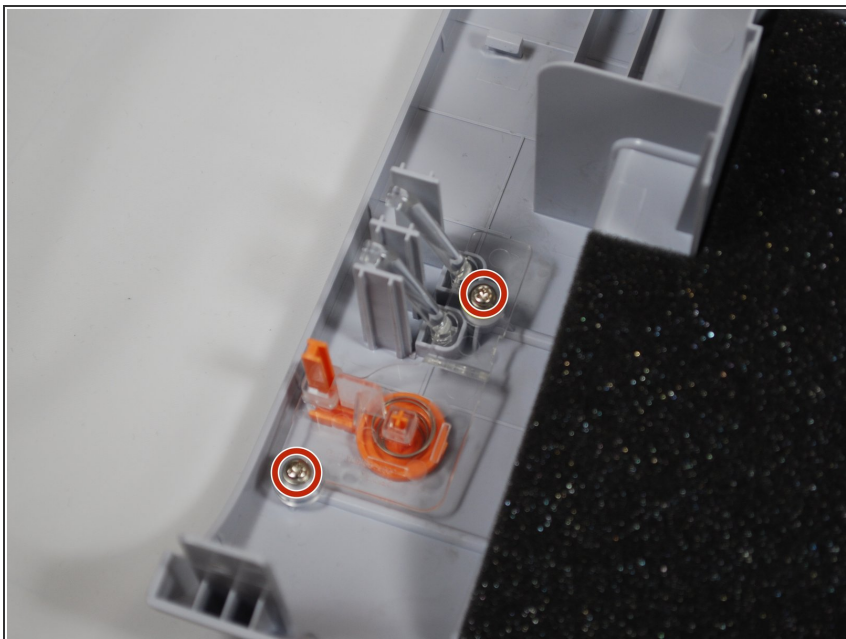
- Using a Phillips #2 screwdriver, remove both 1" screws on the front face of the printer.

Step 6



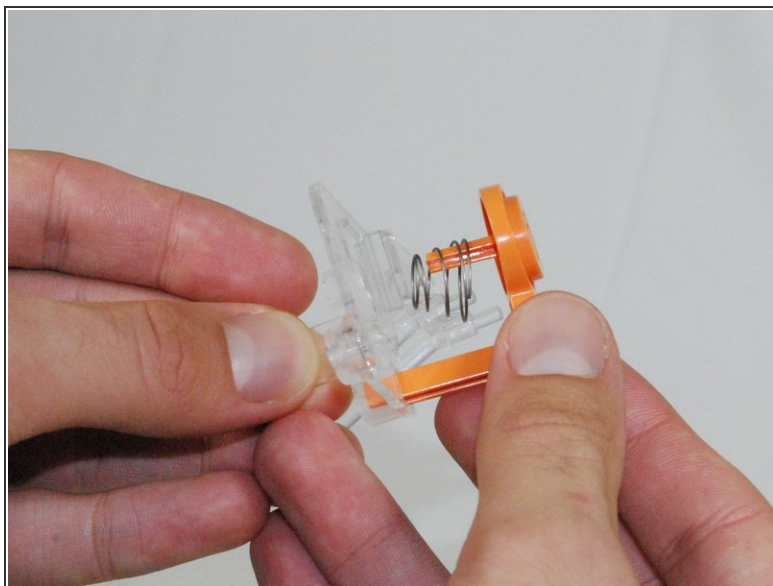
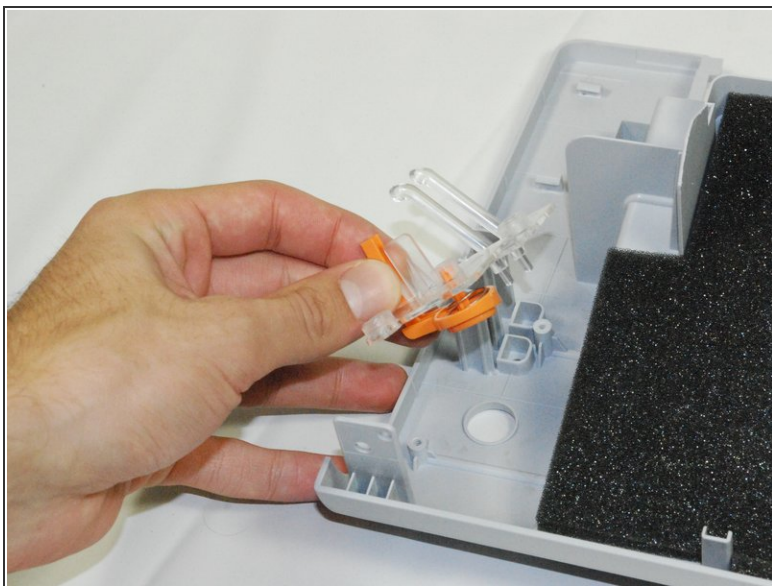
- Using a plastic opening tool, gently lift one side of the top panel from its peg.
- Repeat the last step to free the opposite side of the top panel.
- Lift the top panel from the front to remove it entirely.
- Turn over the top panel to reveal the button on the underside of the panel.

Step 7



- Using a Phillips #2 screwdriver, remove both 1" screws that secure the button to the underside of the top panel.

Step 8



- Remove the clear plastic piece and the orange button from the panel.
- Remove the orange button and the spring from the clear plastic holder.
- Replace the button and reassemble the printer following the directions in reverse order.

