



Palm m105 Motherboard Replacement

This guide is to complete an installation of a new motherboard.

Written By: Aaron



INTRODUCTION

Make sure you have a replacement board before starting. Refer to the these sites for replacement parts. <http://www.palmmediccanada.com/pm1xx.htm> or http://www.directfix.com/category/_PM1.h...

TOOLS:

- [T5 Torx Screwdriver](#) (1)
-

Step 1 — Motherboard



- Start with your intact Palm m105.

Step 2



- Remove protective flap by pulling directly out from the top.
- The two clips will pop out

Step 3



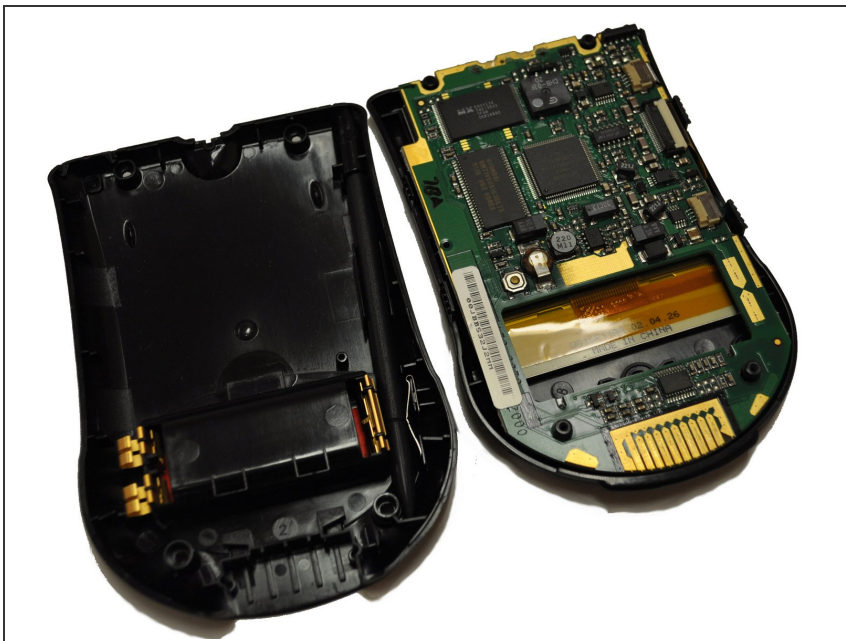
- Remove Faceplate. There is a tab where the finger is located in the picture that needs to be pulled up.
- The Faceplate will then easily lift off

Step 4



- Using a T5 Torx bit screwdriver, remove the four screws located on the back of the device turning counter clockwise.
- The link to purchase this screwdriver is Located [here](#).

Step 5



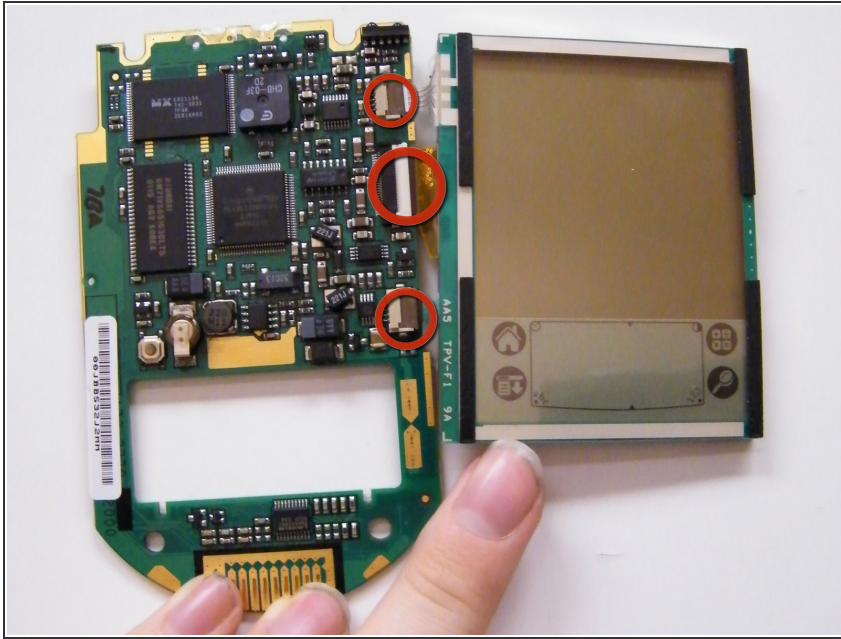
- This is what the device looks like once you have taken the screws out and opened the device.

Step 6



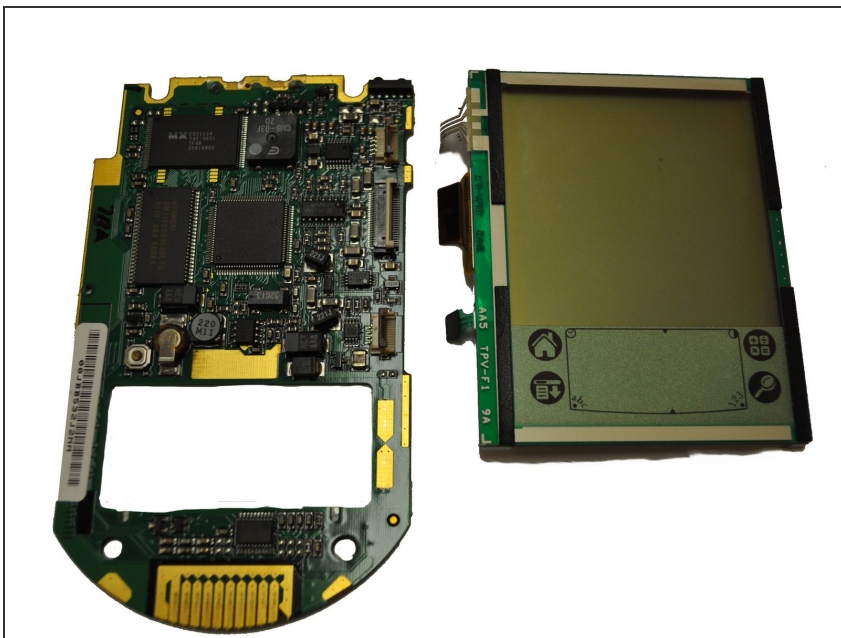
- The Motherboard and screen will pop out of the back case easily.
- Be careful when doing this step, the components are fragile.

Step 7



- To remove the screen from the motherboard there are going to be three tabs that need to be pulled up.
- ** This step needs to be done with special care because it is very fragile.**
- Once they are all three popped up the motherboard and screen will separate easily.

Step 8



- Click here for [Palm m105 motherboard replacement](#)
- Now that the screen and motherboard are separated you may discard the broken screen. The best way to dispose of the broken screen is to: [Recycle it](#)

To reassemble your device, follow these instructions in reverse order.