



RCA RCT6203W46 Battery Replacement

This guide replaces a damaged or nonfunctional battery.

Written By: Nicholas Alexander



INTRODUCTION

A tablet that is unable to turn on is a sign that the battery needs to be replaced. Follow this guide to replace your tablet's battery



TOOLS:

- [Spudger](#) (1)
- [Phillips #00 Screwdriver](#) (1)
- [Soldering Iron](#) (1)




PARTS:

- [MH49370 Battery for RCA 10 RCT6203W46](#) (1)

Step 1 — Battery



-  Make sure the device is off to reduce the chance of an electrical shock. To turn off the device, press and hold the power button.
- Use a Phillips #00 Screwdriver to unscrew the 4mm (5/32 in.) screws from the back cover of the tablet.

Step 2



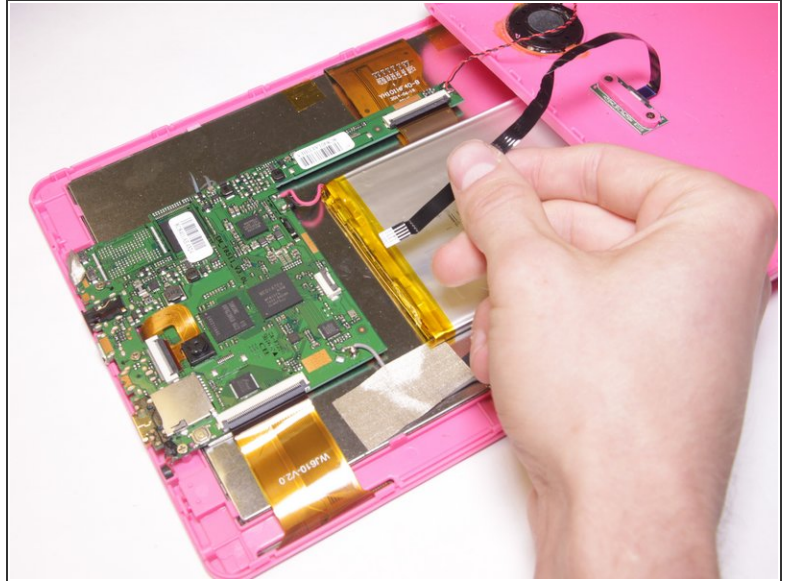
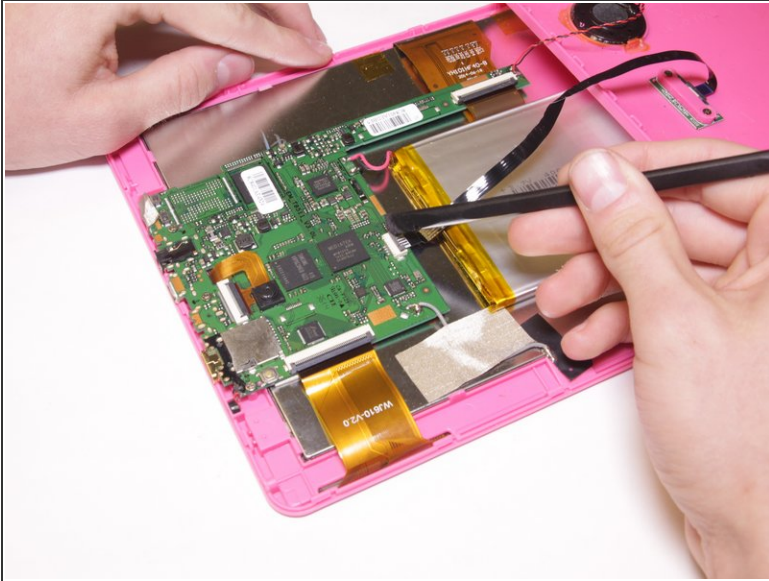
- Use a spudger to pry the back cover. Start from one edge of the back cover and slide across until the cover is lifted from the tablet body. Repeat for all edges.

Step 3



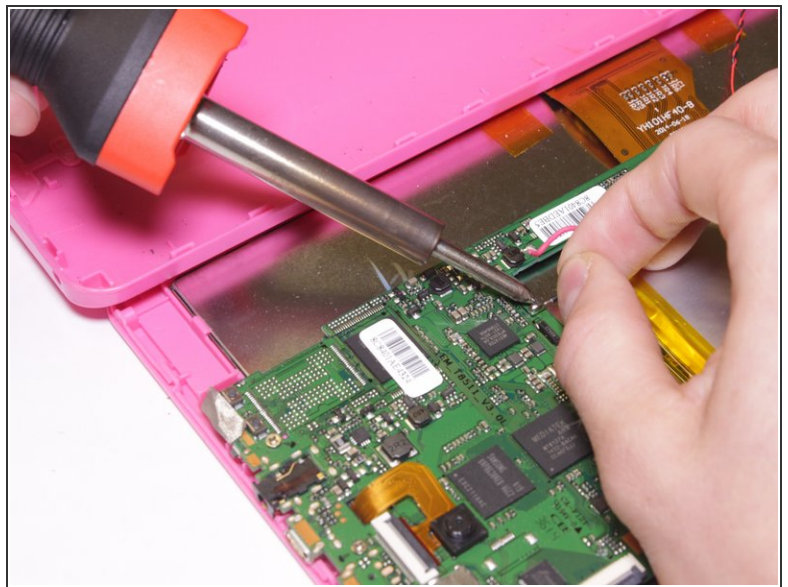
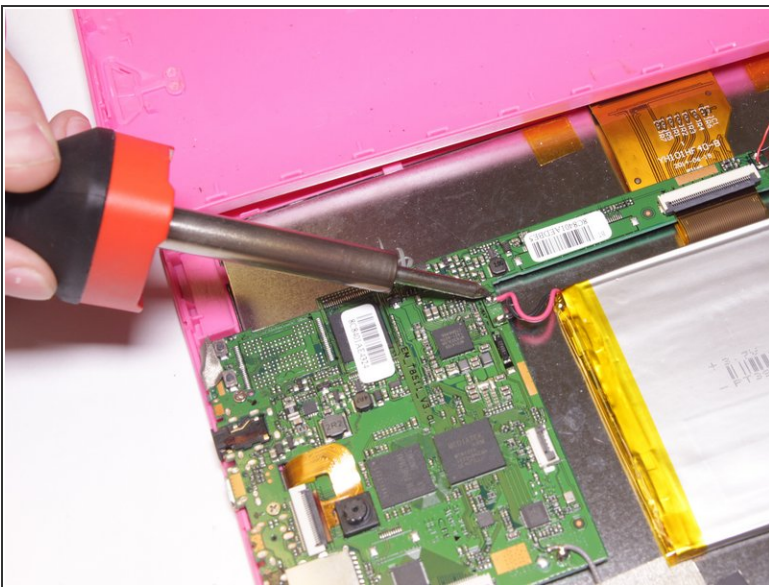
- Open the tablet cover carefully and slowly lengthwise.
- ⓘ The keyboard wire ribbon and rear speaker wire should be intact and connected with the back cover.
- ⚠ Opening the tablet abruptly may tear or damage cover attachments.

Step 4



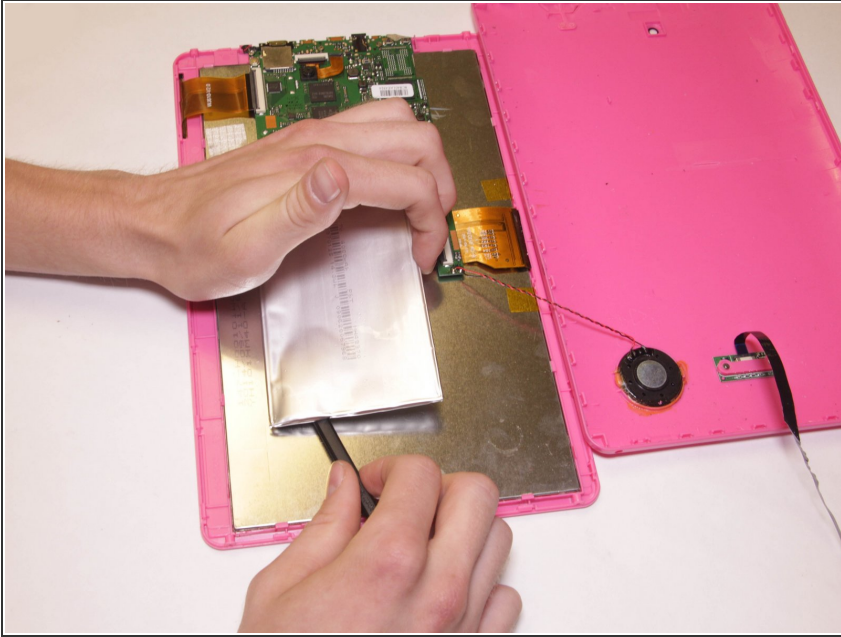
- Use a spudger to flip up the flap of the ZIF connector that holds the keyboard wire ribbon.
- Remove the wire ribbon from clamp.

Step 5



- Use a soldering iron to melt the solder then remove the red and black wire from the motherboard.

Step 6



- Use a spudger to pry and slide underneath the battery to unstick it from the LCD metal plate. It may take a good amount of force to remove.
- ⓘ Try to decrease battery deformation by using a spudger rather than prying with your hands.
- ⓘ Do not let battery fall back on adhesive, it will stick back onto the LCD metal plate.
- ⚠ Be careful to not puncture the battery. The battery may ignite or explode.

To reassemble your device, follow these instructions in reverse order.