



Epson Stylus Photo 1400 Housing Replacement

This guides the user in removing the bottom, side and top housings of the printer.

Written By: Larry Huang



INTRODUCTION

To get to the inside parts of the printer, the housing components must come off.



TOOLS:

- [6-in-1 Screwdriver](#) (1)
 - [Phillips #2 Screwdriver](#) (1)
 - [iFixit Opening Tool](#) (1)
-

Step 1 — Housing



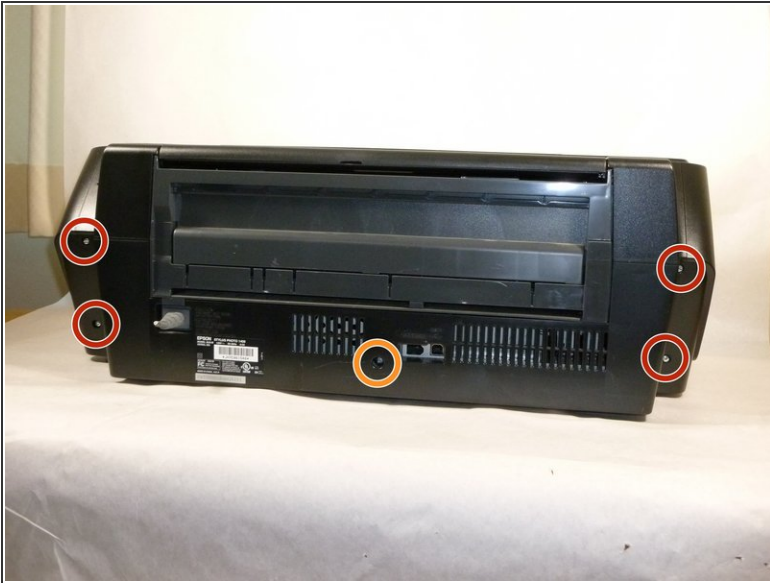
- Turn off the printer.
- Disconnect all data connections coming into the printer such as USB, network cables, firewire, etc. as well as removing the power cord.

Step 2



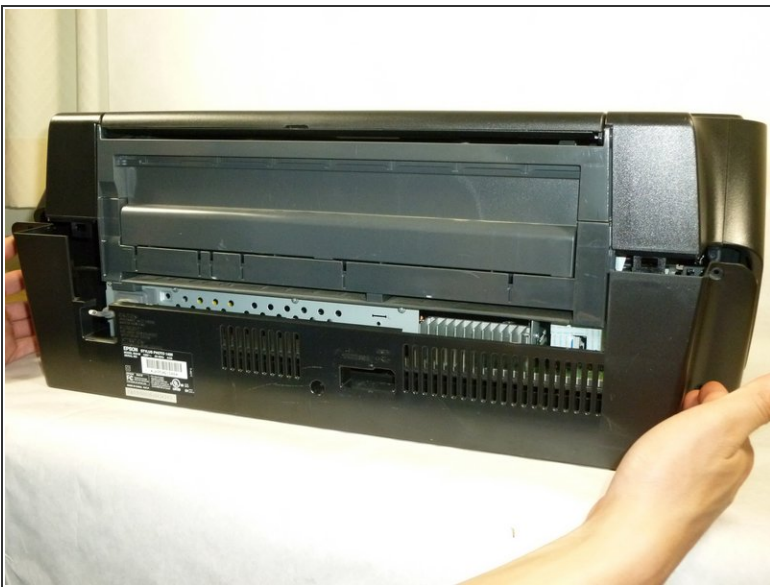
- Locate the IEEE cover in the back.
- Gently slide the cover to the right to unlatch, then pull to remove it.

Step 3



- Using a Phillips #2 screwdriver, remove the four 10 mm screws shown.
- Remove the 6 mm screw that holds the rear housing in place.

Step 4



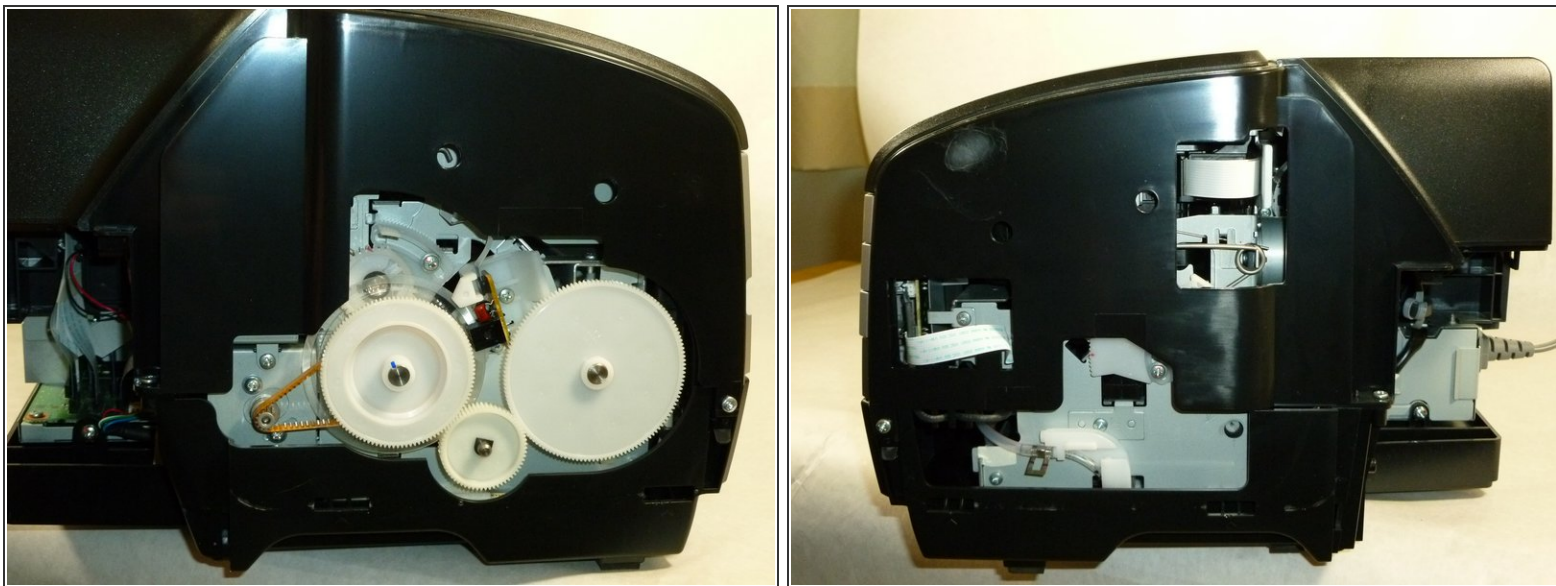
- Remove the rear housing by pulling it backwards.

Step 5



- Insert a plastic opening tool into the cutouts of the lower housing.
- Release the two tabs of the side housing by lifting the tool in an upward motion.
- Remove the side housing by pulling it outwards.

Step 6



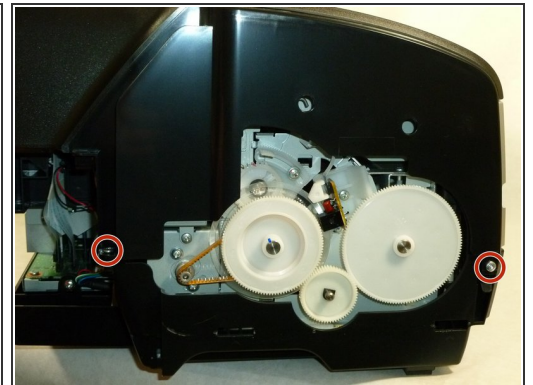
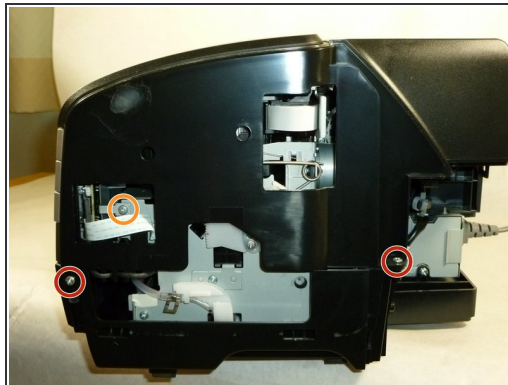
- ① Both side housings are attached by the same type of mechanism.
- Using the same method, remove the other side housing.

Step 7



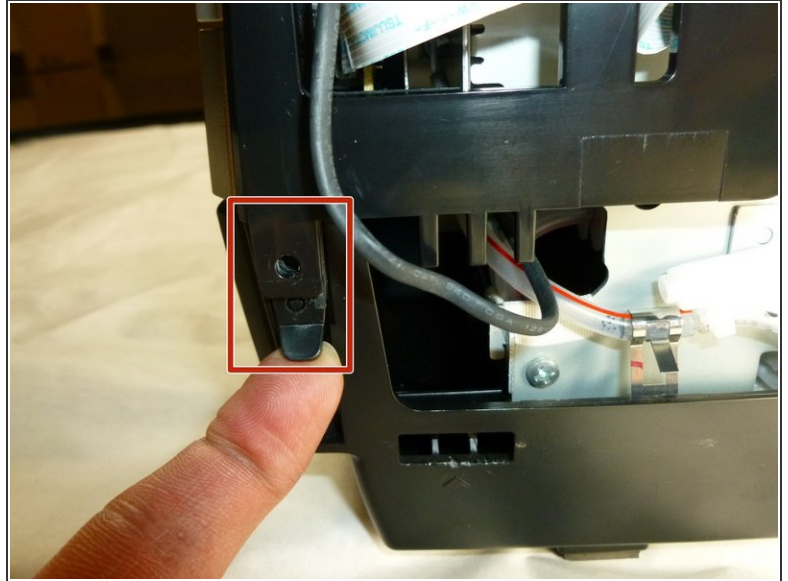
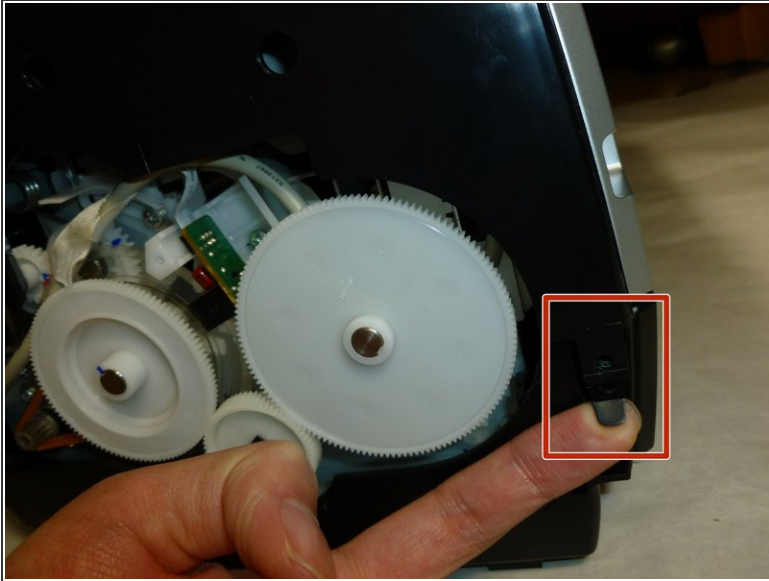
- Lift the paper support.
- Open the printer cover and front cover.

Step 8



- Remove the four 10 mm Phillips #2 screws from the sides of the printer.
- Remove the three 6 mm Phillips #2 screws.

Step 9



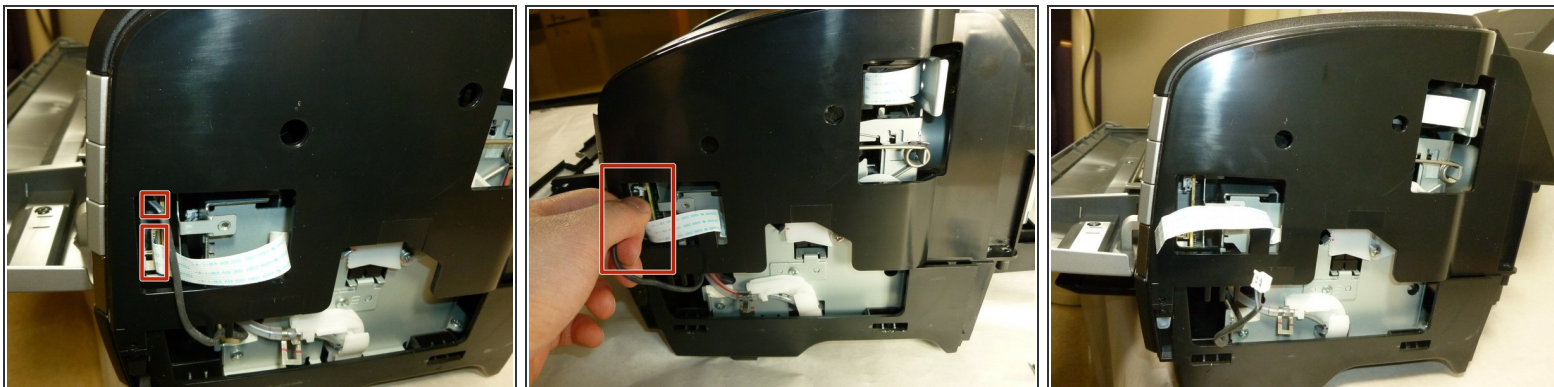
- Detach the tabs from the pins on each side by pulling it outwards.

Step 10



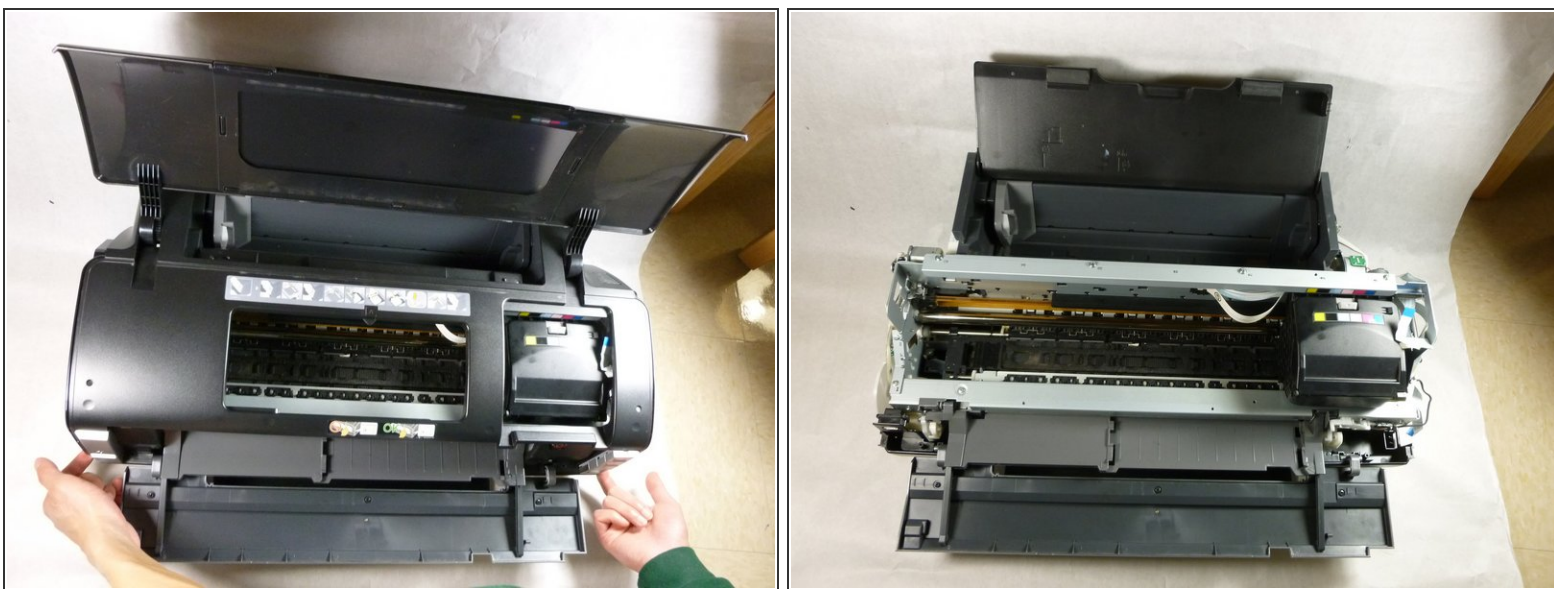
- Remove the two 10 mm Phillips #2 screws on the front of the printer.

Step 11



- Disconnect the two cables on the side by carefully pulling it outwards.
- ⓘ You may need to gently rock the two cables up and down while pulling.

Step 12



- Remove the upper housing by lifting it upwards.
- ⓘ It's easier to lift the housing by gripping it from the bottom.

To reassemble your device, follow these instructions in reverse order.