

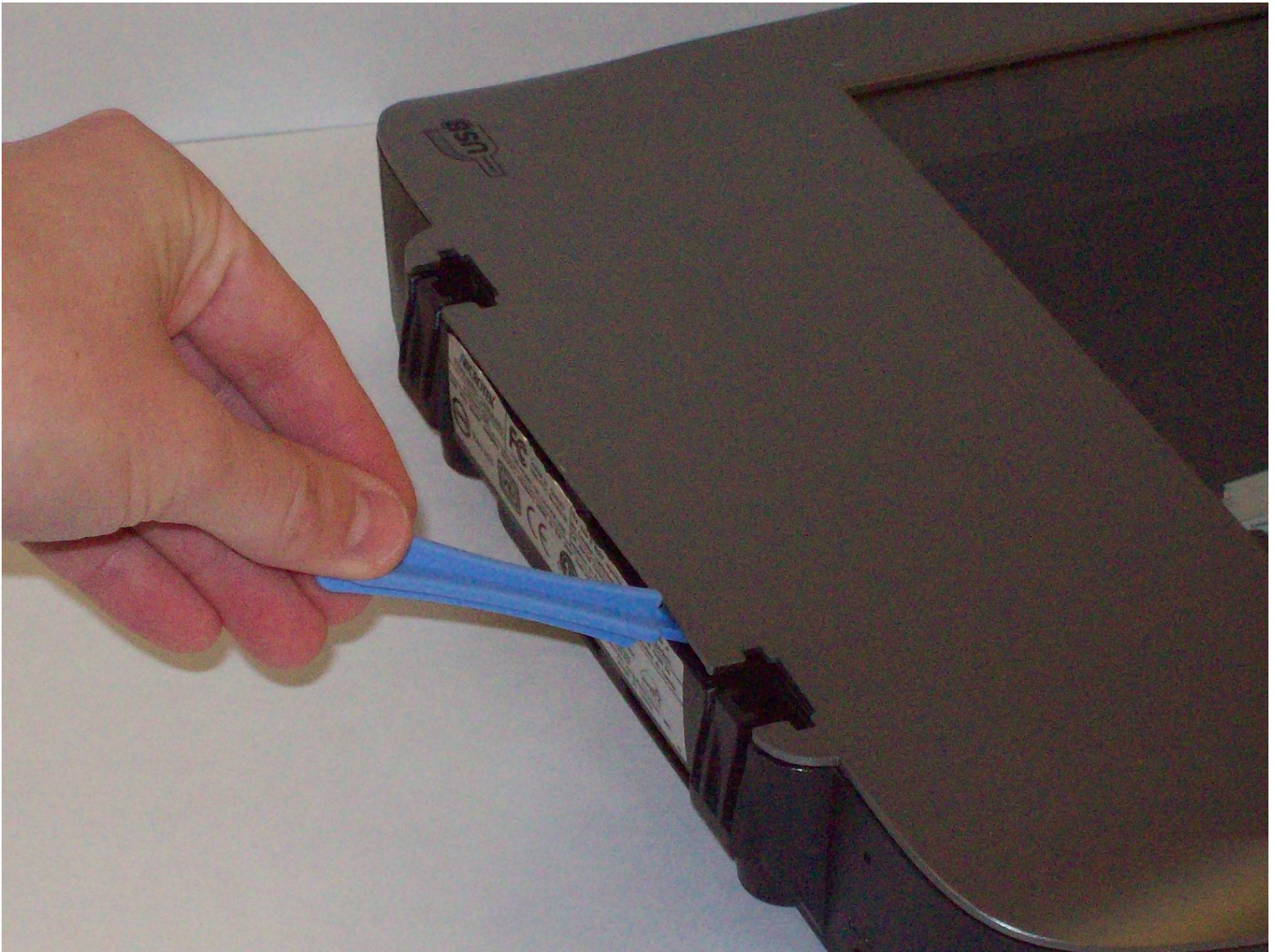


Disassembling Microtek ScanMaker 5900

Outer Scanner Chassis

This guide will show the user of this scanner...

Written By: Taylor Nesheim



INTRODUCTION

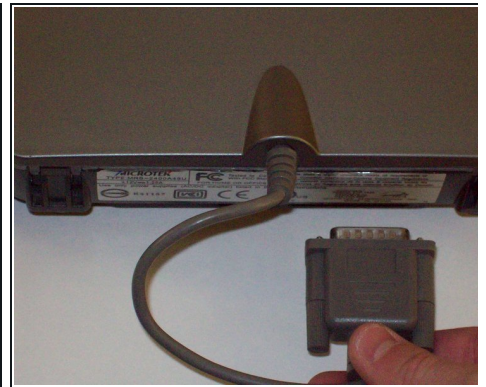
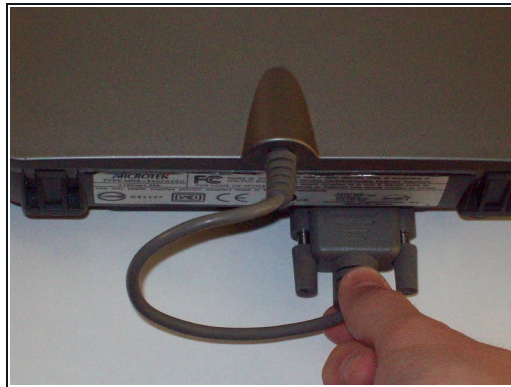
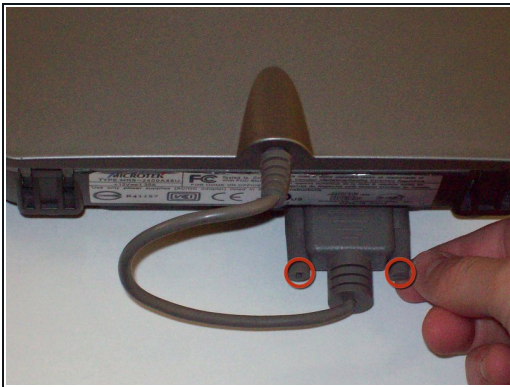
This guide will show the user of this scanner how to take apart the chassis so they can repair inside components.



TOOLS:

[iFixit Opening Tool](#) (1)

Step 1 — Remove serial port connection



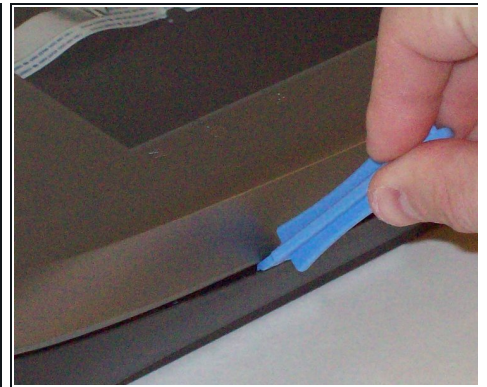
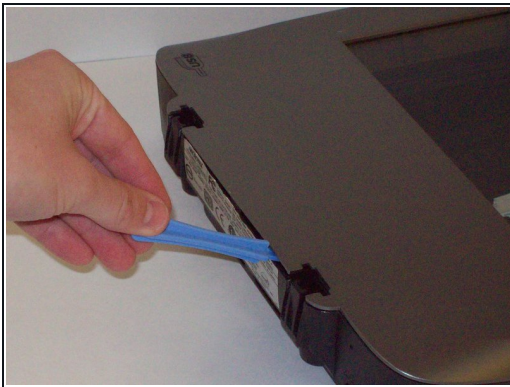
- Loosen the screws on the serial port by turning them counter clockwise by hand.
- After loosening the screws, pull the serial port out.

Step 2 — Remove Lid



- Lift lid to its vertical position.
- Pull lid straight up to remove it from the scanner.

Step 3 — Detach plastic latches



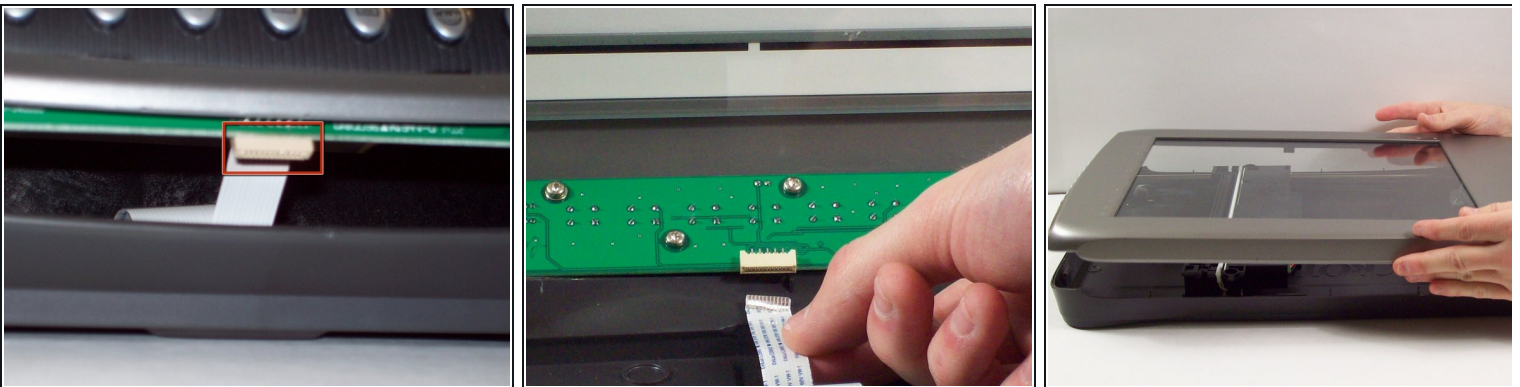
- Push the plastic opening tools into the crack between the top and the bottom of the chassis.

Step 4 — Continue latch detachment



- After placing one plastic opening tool into the slit, slide other plastic opening tools along the slit to detach the top from the bottom of the chassis.
- Go all the way along the chassis until you can lift the upper lid.

Step 5 — Fully remove the upper lid



⚠ Do not fully remove the lid until you remove the ribbon cable attached to the front of the upper lid.

- Do this by grabbing the upper lid from the sides and rotating it ninety degrees so it is perpendicular to the bottom lid.
- Grab the ribbon cable and gently pull it out of its slot with your fingers.
- The upper lid can now safely be removed from the bottom lid.

To reassemble your device, follow these instructions in reverse order.

