



Kodak ESP C315 - How to reseal printhead ribbon cable

Open the printhead assembly to reseal a disconnected ribbon cable

Written By: infiniti25



INTRODUCTION

I was at a friend's house looking at his dad's printer, a Kodak ESP C315 and for some reason the ribbon cable came loose. This prevented the printer from controlling and moving the printhead/cartridge tray.

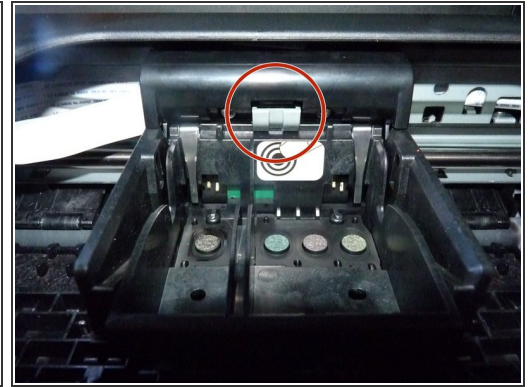
Follow along for the technique I used to fix it.



TOOLS:

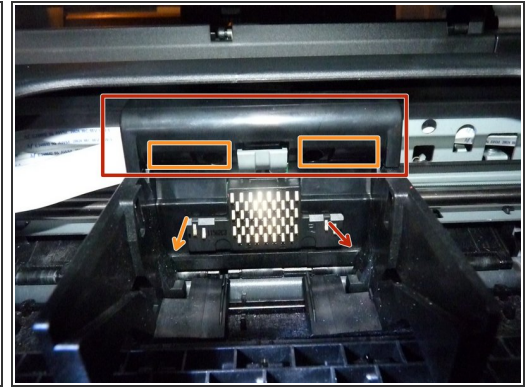
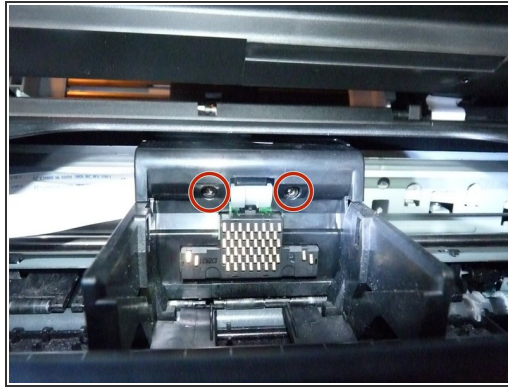
- [T8 Torx Screwdriver](#) (1)
 - [Long Thin Flat Head Screwdriver](#) (1)
-

Step 1 — Preparation



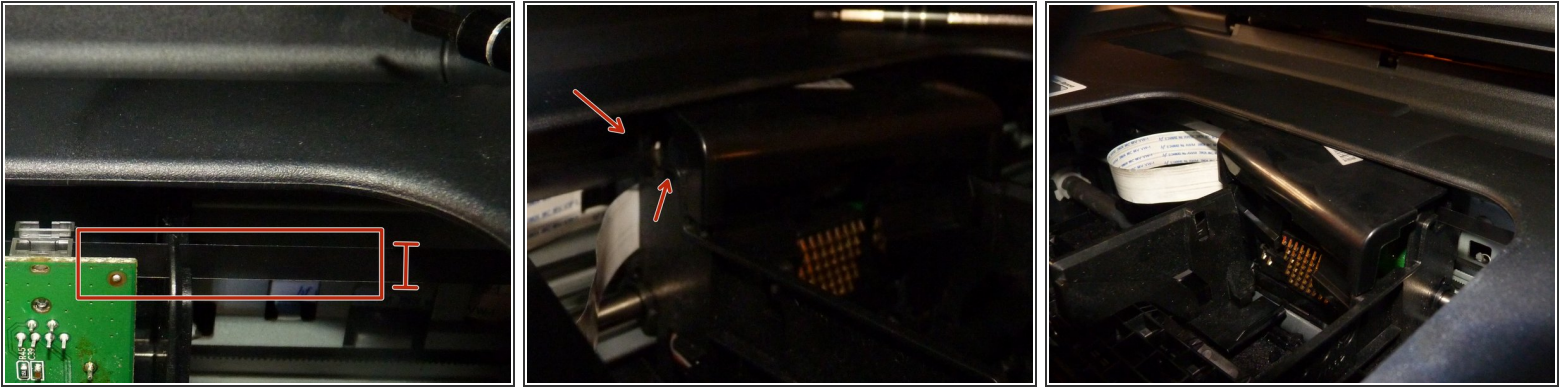
- "The cat is out of the bag!" - :(loose ribbon cable (Image 1 red)
- Lift the top hinged lid (not just the scanner lid)
- Remove any power to the printer and use a long flat bladed screw driver to release the cartridges - move them into the centre position (Image 2)
- Follow the general advice on this video (<https://www.youtube.com/watch?v=n3bQ0n41...>) to release the printhead park lock but be aware your printhead on the C315 will be on the right hand side not the left
- Remove the cartridges by pinching the ends with thumb and finger, then lifting upwards and out
- Now remove the printhead cartridge carrier tray by pushing up on the grey tab above the pressure point (label) (Image 3)

Step 2 — Removal Part 1



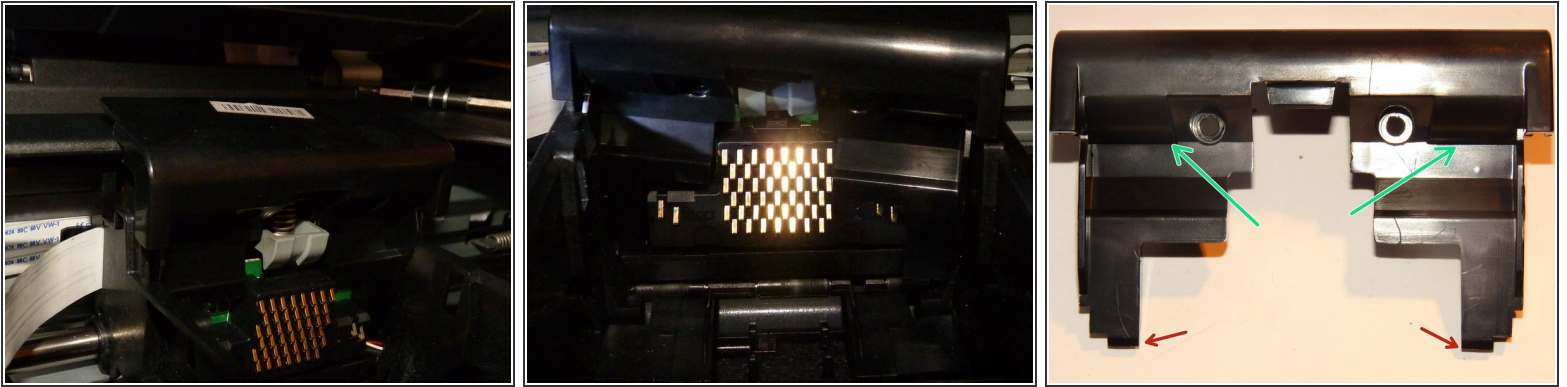
- Using your T-8 Torx (Image 1) untighten the two screws (Image 2) and keep safe. You will only need the T-8 Torx again to replace these screws
- Next use the long flat bladed screw driver to press back on the tab (Image 3 orange arrow) whilst lifting upward on the top bar (Image 3 red rectangle)
- There are two lugs and two areas on the top bar to grab, once both lugs are released and visible (sat slightly forward) it is time to loosen the top plastic

Step 3 — Removal Part 2



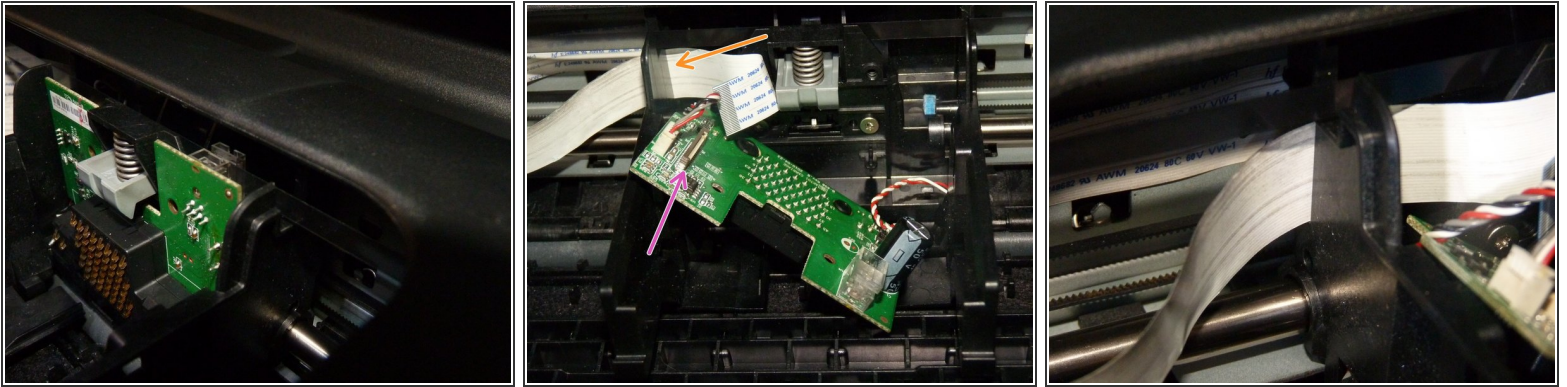
- Warning! There is a clear coloured optical ribbon (Image 1) which runs through the top section of the printhead. Avoid damaging with the flat blade
- You need to put the flat blade into the seam near the top just in front of or just behind the optical cable, wherever you feel most comfortable (Image 2)
- Repeat for the other side
- Your cover should wiggle freely, it should move up and down

Step 4 — Removal Part 3



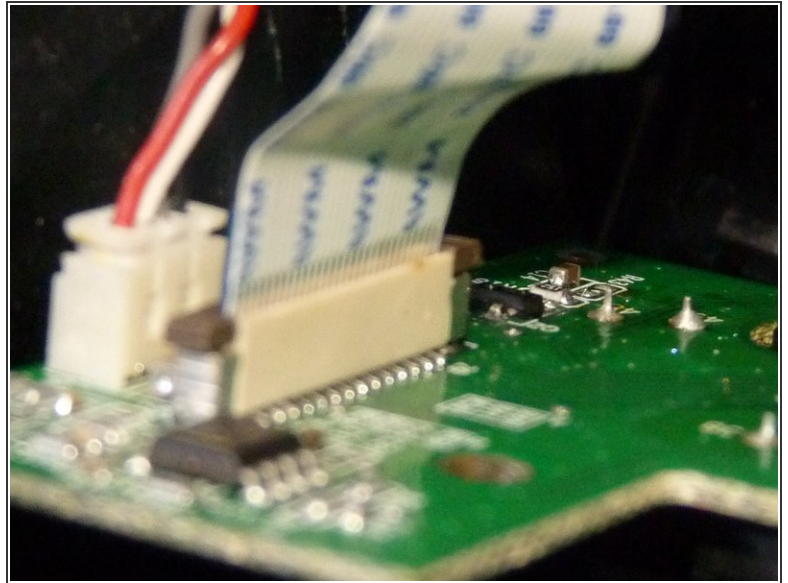
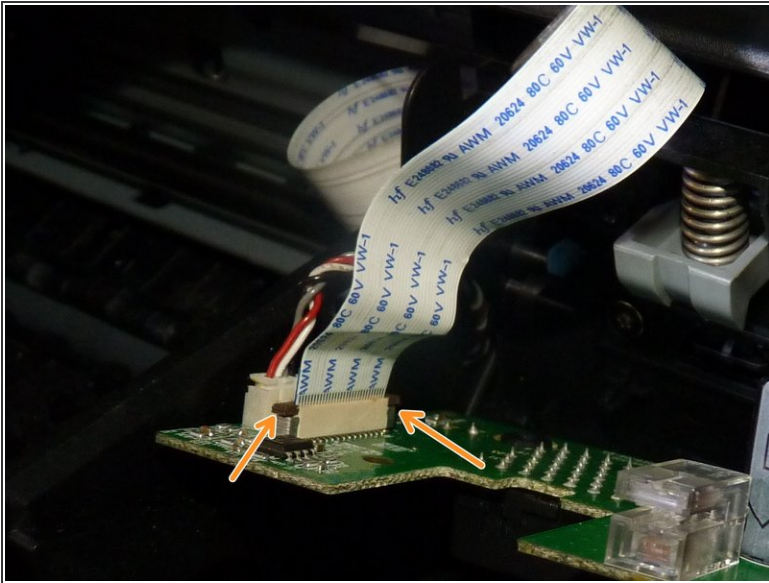
- Your aim is to grip the top of the cover with both hands using thumb and finger(s)
- You need to pull the cover up to the fixed plastic casing (with the force required the plastic casing bends but did not break)
- While pulling upwards, you need to be pulling towards your body and using your little fingers pushing outwards on the sides of the printhead tray carrier while tilting the cover
- You may hear creaking of the plastics, but with patience and firm but gentle persuasion you should end up with the top of the plastic cover sat on the fixed case (Image 1)
- You need to then work the sides out carefully (Image 2) using the flat bladed screw driver for assistance if required while pulling up so the tabs don't get snapped at the bottom of the part
- If successful, you will have the cover off (Image 3)
- Note the tabs (Image 3 red arrows) and the best spots to place your thumbs/fingers (Image 3 green arrows)

Step 5 — Reseat Ribbon Cable Part 1



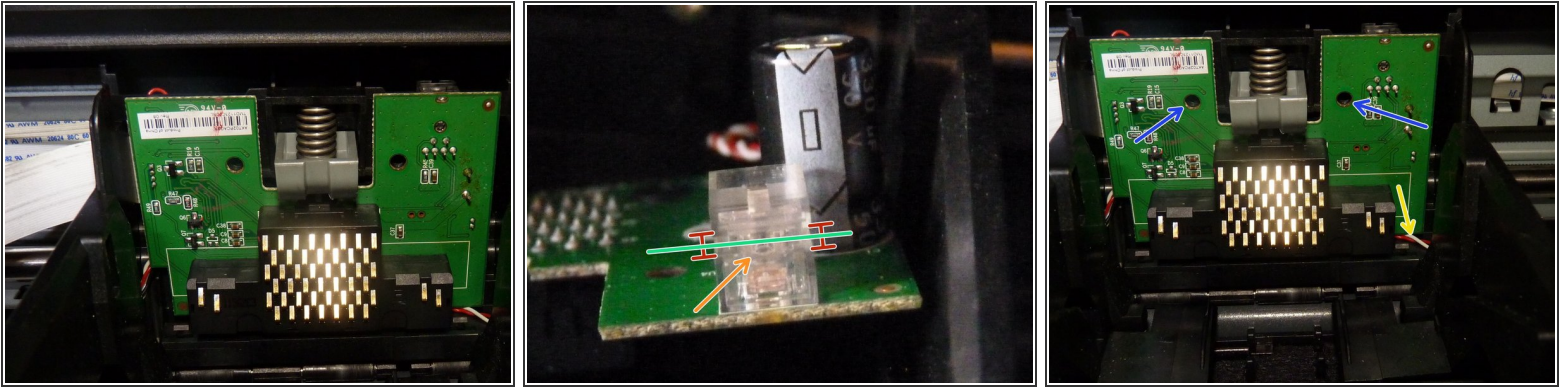
- Warning! Lift out the optical cable from the clear plastic sensor on the back of the circuit board (top right) before attempting to move the board (Image 1)
- The circuit board should slide forward and up past the grey sprung catch (Image 1) to reveal the back of the board and the socket without it's ribbon (Image 2 pink arrow)
- Now its time to get the ribbon cable in side the housing (Image 2 orange arrow). Look on the left of the housing and find the vertical slot. (Image 3)
- Feed the ribbon cable in with the metallic strips/pins facing away from you
- If you succeeded you should see the metallic strips/pins facing you when the ribbon naturally flexes (Image 2)

Step 6 — Reseating Ribbon Cable Part 2



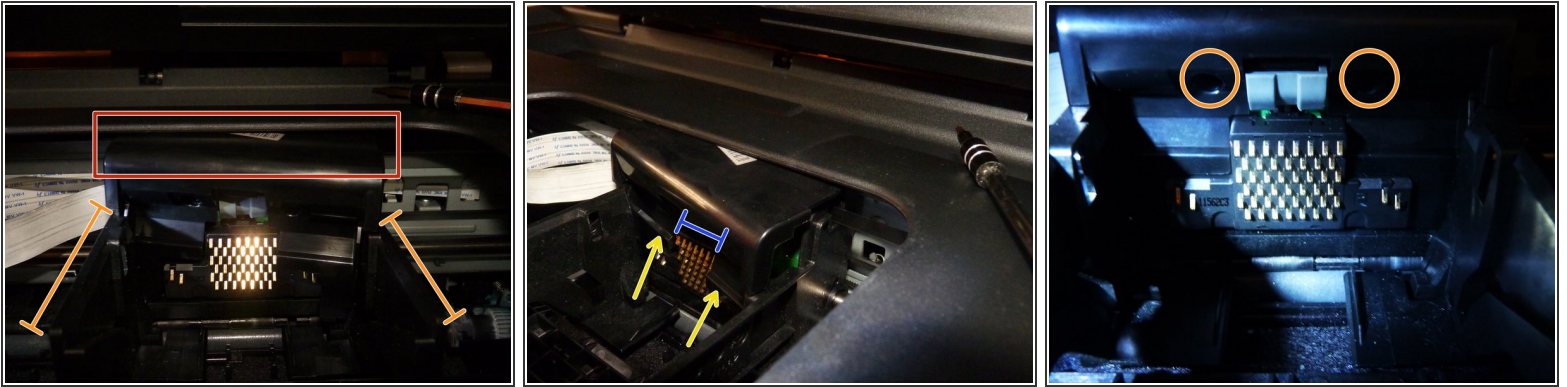
- Lift the brown holding tab up on the connector (Image 1 orange arrows)
- The ribbon only has writing on one side, that side needs to face towards the clear plastic sensor on the other end of the board
- Feed it into the connector and while holding it in place with your finger and thumb in the centre of the ribbon cable, push each side of the brown connector tab down until the connector grips the ribbon cable
- You should notice the tops of the metallic strips/pins stuck out the top of the connector should be uniform (Image 2). If you have put it in incorrectly, then there will be more of the strips/pins showing at one end or the strips will not be visible because it is in backwards

Step 7 — Reassembly - Circuit Board



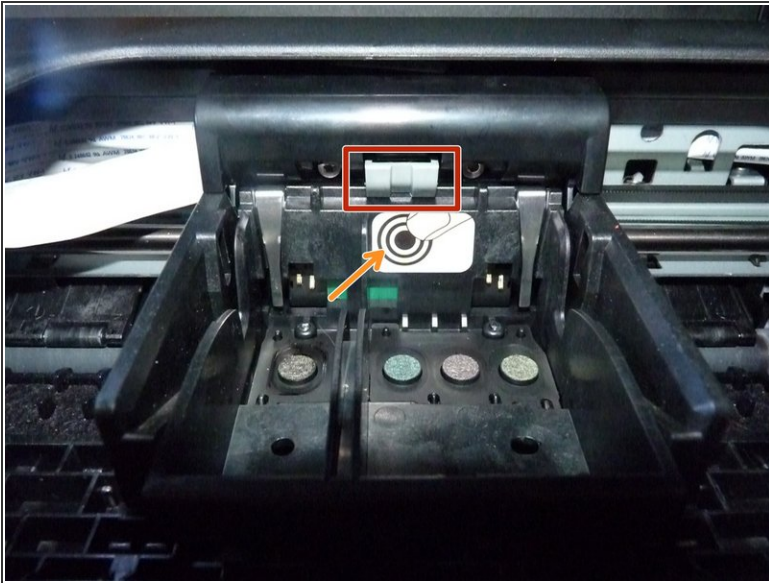
- You now need to feed any excess ribbon out as you push the circuit board back into place, being sure to lift the grey sprung catch to allow the board to go far enough back to sink down slightly
- Now is the time to re-seat the optical cable (Image 2 green) behind the top right of the board. Note it sits in between the clear plastic reader (Image 2 orange arrow) in a groove (Image 2 red depth indicators)
- Now you need to line up the screw holes (Image 3 blue arrows) by persuading the board down and slightly backwards. You might need to push the red and white wires backwards (Image 3 yellow arrow)
- Warning! Failure to do this before replacing the plastic case will prevent screws securing the printhead casing and circuit board

Step 8 — Reassembly - Printhead Casing



- Replacing the plastic casing is a reverse of the removal - the big flat top under the fixed plastic casing first (Image 1 red), then lifting up and pushing back until the lugs are in towards the bottom
- You might find it easier to apply gentle outward pressure to the side of the printhead cartridge carrier tray (Image 1 orange depth markers)
- I found it easier once I had the section of the cover (Image 2 yellow arrows) higher than the pin pad (Image 2 blue depth marker) to push it backwards
- If you get the lugs in at the bottom and the top flat section of the cover is aligned and close to the fixed printhead (Image 3), now is the time to check the optical cable has not been disturbed. It should be vertical and the print head should not have any problems sliding side to side
- Finally replace the screws (Image 3 orange) and you are finished with the cover

Step 9 — Reassembly - Cartridges



- All that is left is to replace the printhead cartridge carrier tray ensuring you push against the white label (Image 1 orange arrow) until it clicks under the grey sprung catch (Image 1 red) and then replace the cartridges (Image 2) as normal ensuring they also click into place
- You can now move the assembly all the way to the right to park it
- Close the printer lid
- Restore power and test it moves at the request of the printer during start up sequence

Run the printer's maintenance cleaning procedure as you would normally and try a test print and it should be good to go