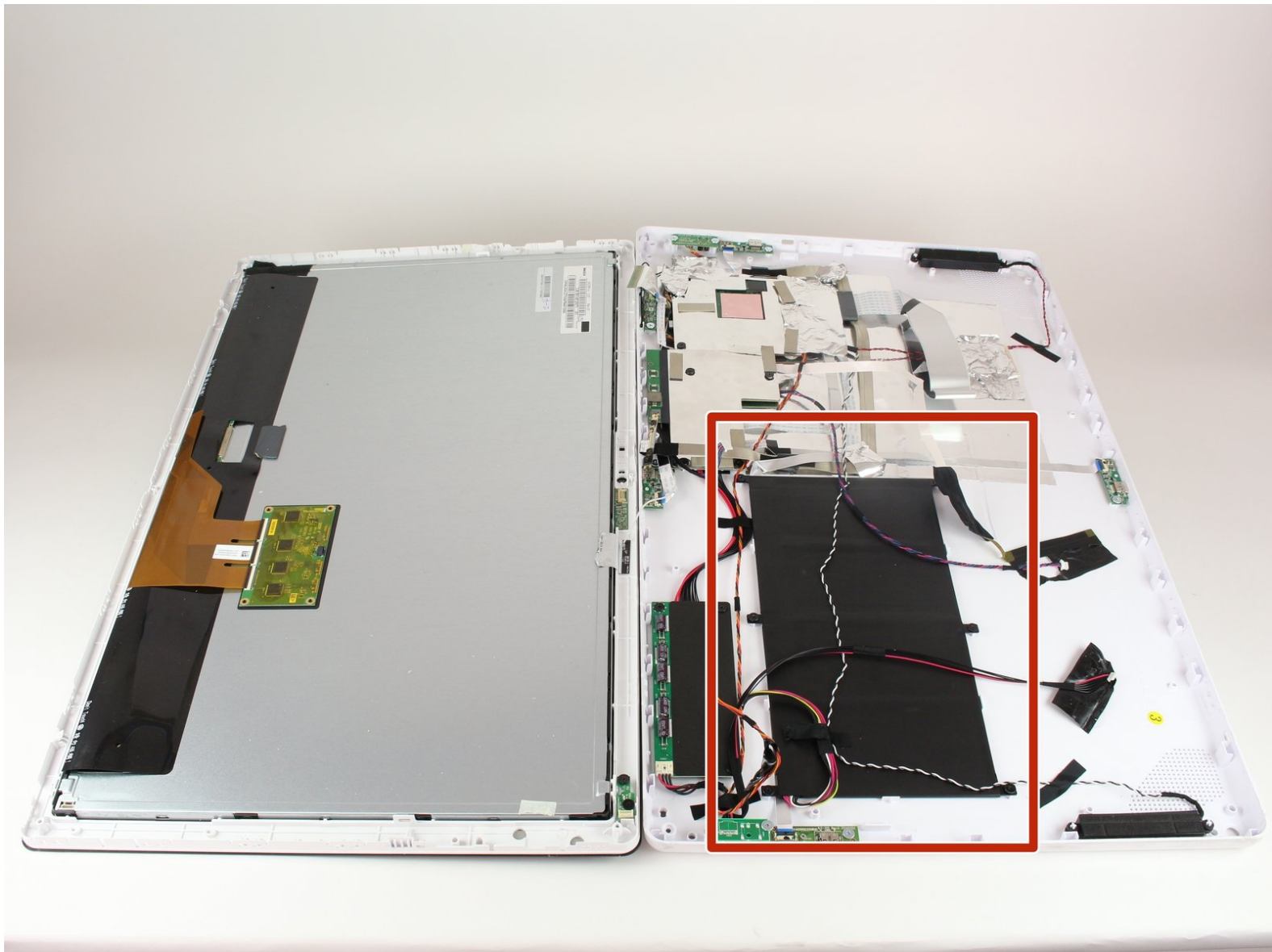




# Nabi Big Tab HD24 Battery Replacement

Replacing a faulty battery to bring the power back to your tablet.

Written By: Kevin Garcia



# INTRODUCTION

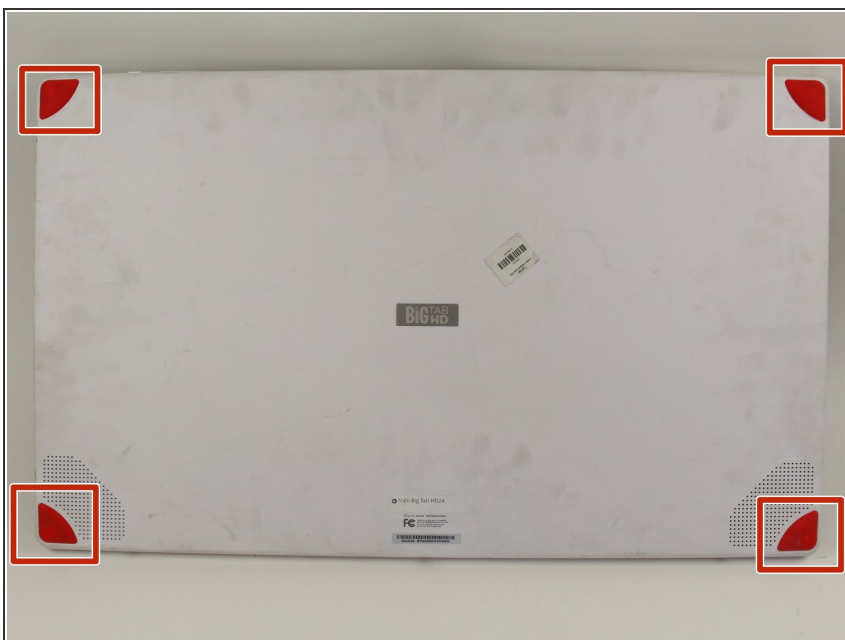
Make sure your Nabi Big Tab HD24 is turned off before replacing the battery, and avoid using metal pry tools if possible. After detaching the front and back covers, there will be several connections linking both sides of the device, so be mindful to properly disconnect them before proceeding.



## TOOLS:

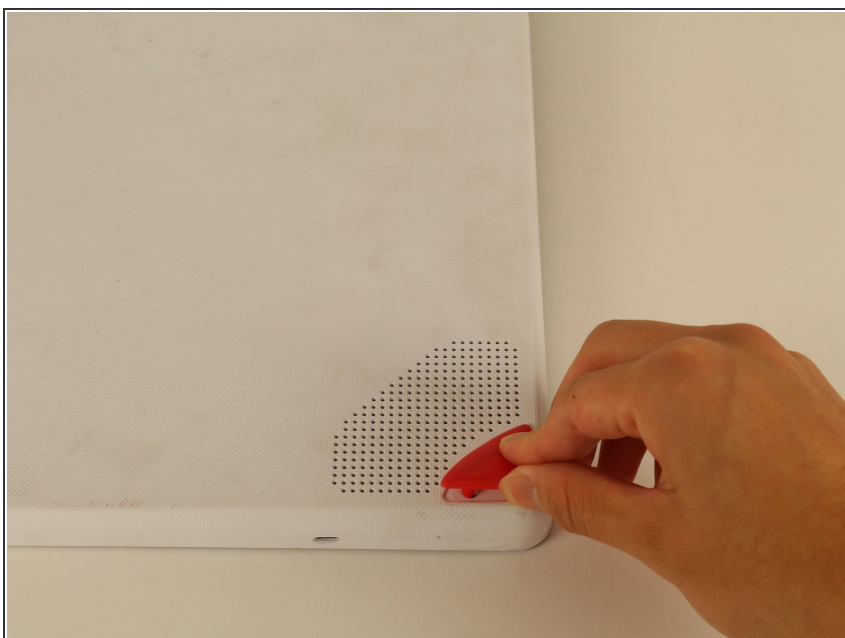
- [iFixit Opening Tools](#) (1)
  - [Phillips #1 Screwdriver](#) (1)
-

## Step 1 — Back Assembly



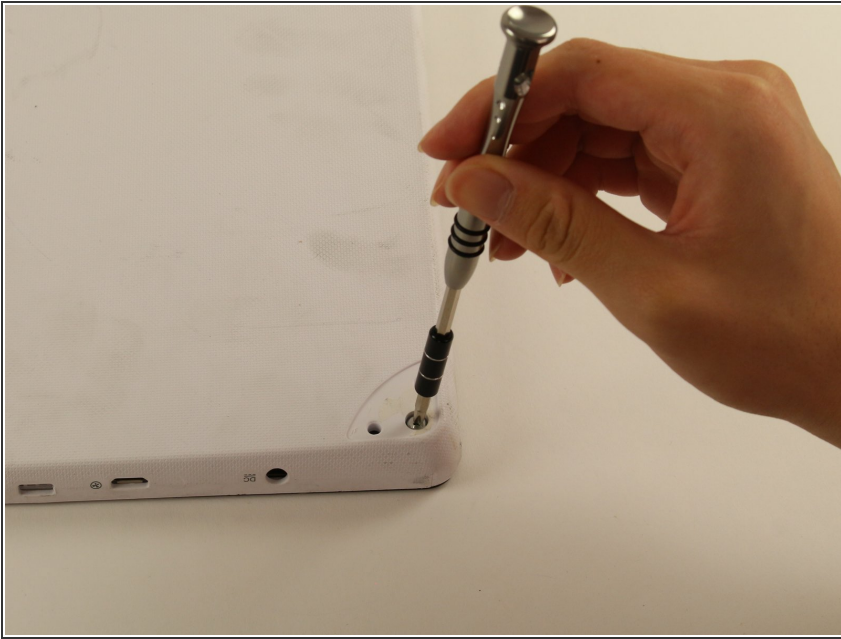
- ❗ Ensure that the tablet is facing you with the screen on the table.
- Locate the four red rubber stops at the corners.

## Step 2



- Use your fingers to carefully peel them off the device to reveal the screws underneath.

## Step 3



- Use a Phillips #1 screwdriver to remove the 9.5 mm screw in each of the four corners.

## Step 4



- ✦ Flip the tablet over such that the screen is facing upwards.
- Locate the the 4 small openings on the sides of the tablet.
- i There should be 2 on the bottom of the tablet, 1 on each side of the tablet viewing it from the front as if you were using it.
- ⚠ Do not confuse the openings with the charging port or the USB ports. The openings will be labelled with an icon of a small fan, the Nabi logo.

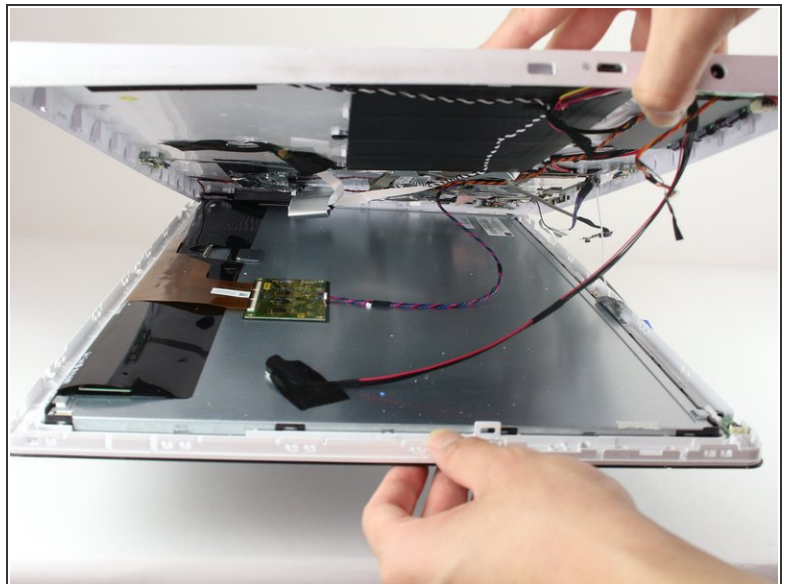


## Step 5



- Insert a metal spudger into one of the openings and carefully pop the device open by applying a steady downward force.
- Repeat for the other three openings.

## Step 6

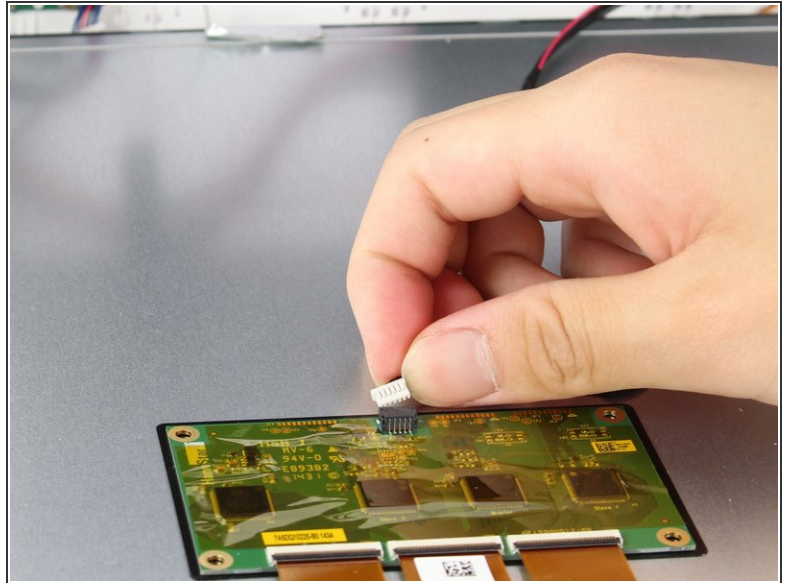
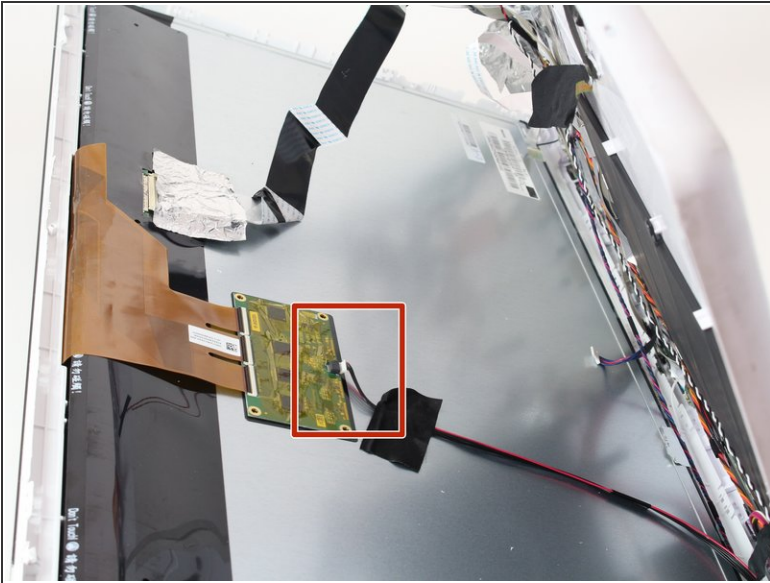


✦ Flip the device over so that the back assembly is facing you.

- Use a plastic opening tool to carefully pry open the device from its hinges.

⚠ Take care when opening the device as there are cables running internally that are connected to both the front and the back assemblies.

## Step 7



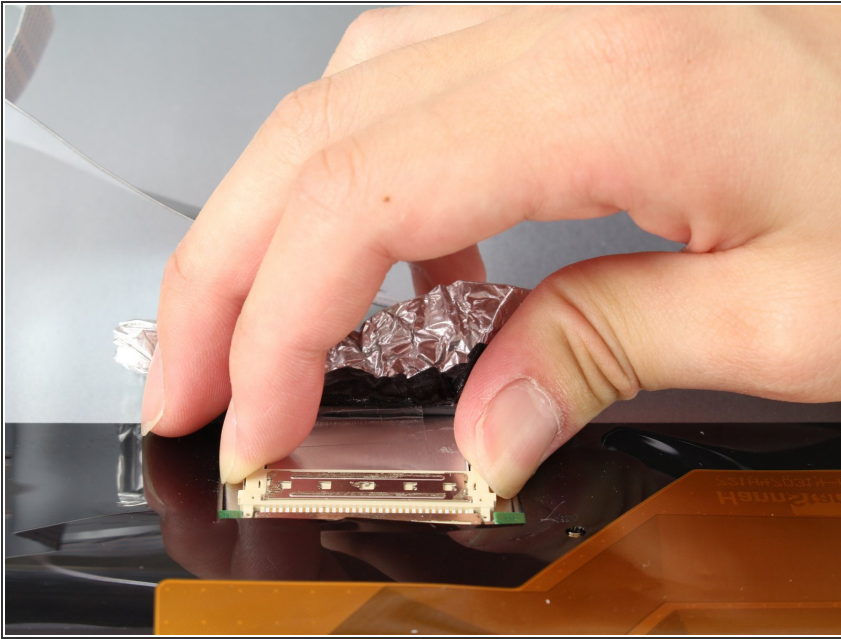
- Locate the white port that connects the back panel to the circuit board on the back of the display.
- Carefully pull the plastic connector straight out.

## Step 8



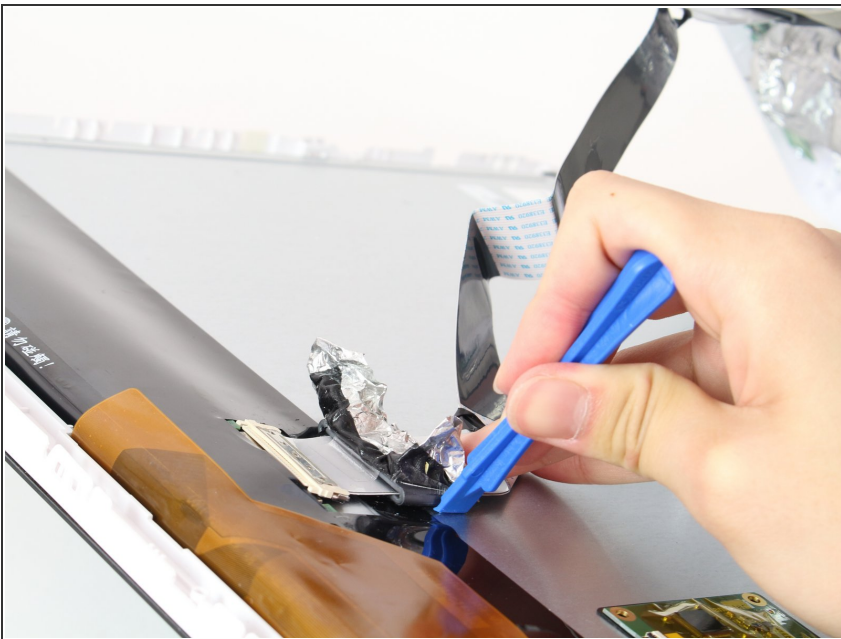
- ⚠ Be careful of the aluminum foil tape, as it can easily rip.
- Carefully lift up the aluminum foil tape with your fingers so that the ribbon connector reveals itself.
- ⚠ Do not try to pull the ribbon cables off the screen as there is a plastic piece surrounding the ribbon cables glued onto the metal display.

## Step 9



- Firmly press the two switches located on the sides of the connector and disconnect the connector from its connections.
- ⓘ Leave the connector disconnected but still intact with the metal display.

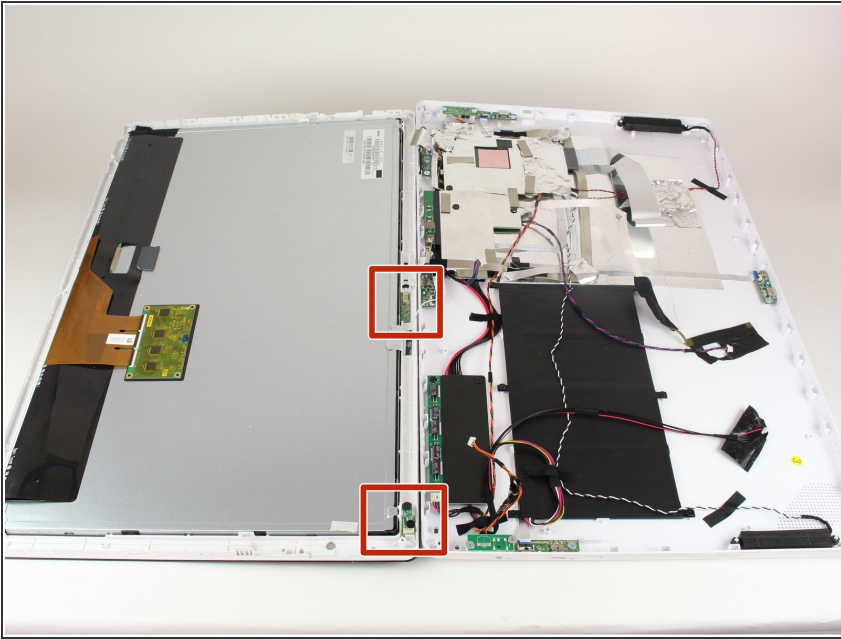
## Step 10



- Use a plastic opening tool and carefully push it underneath the grey plastic case surrounding the ribbon cable.
- Apply a downward force to carefully peel the grey plastic off of the metal display.

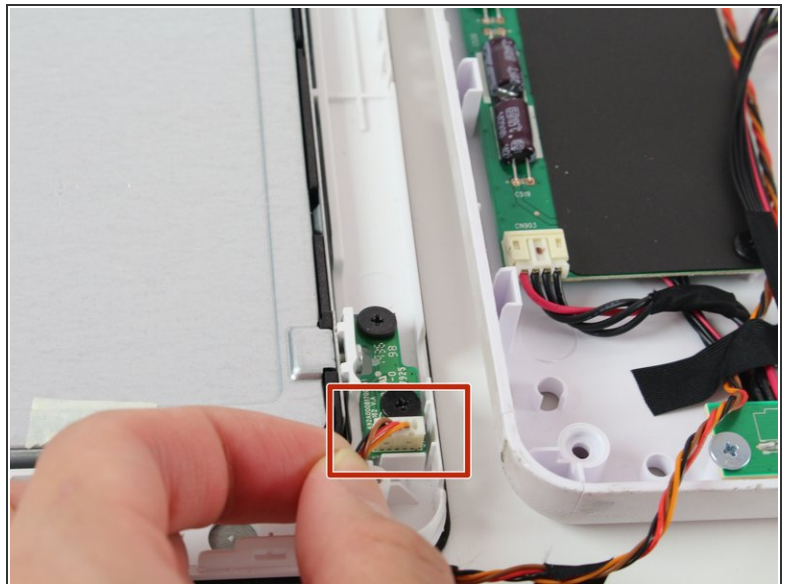
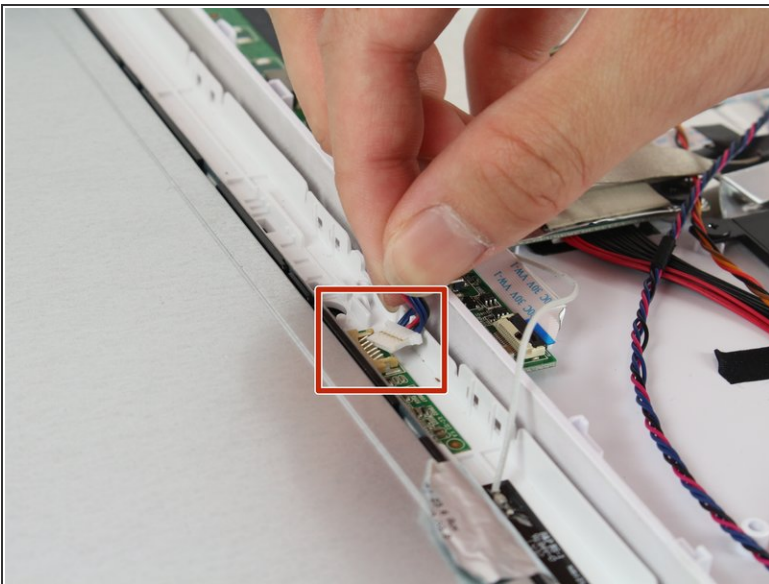


## Step 11



- Locate the two cables running on both sides of the device found at the bottom side of the screen.

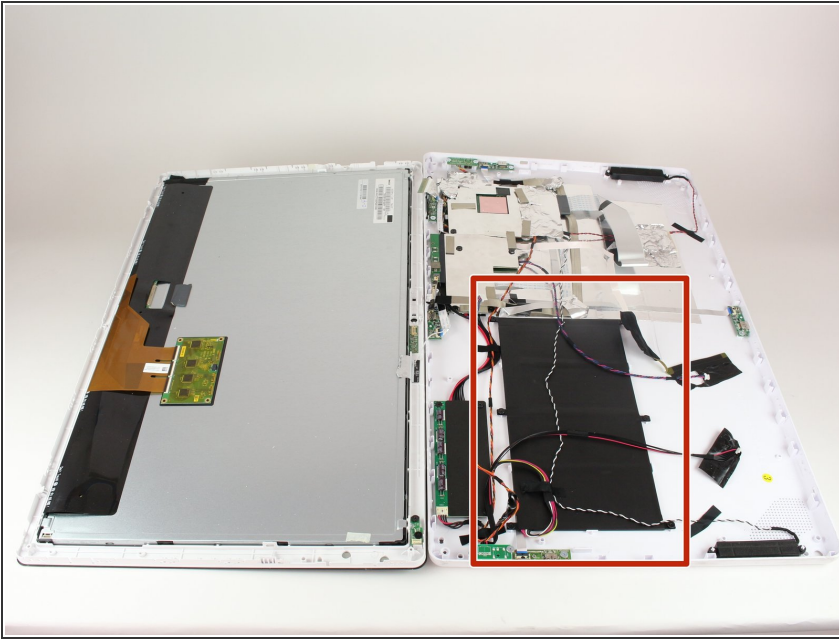
## Step 12



- Carefully grab both sides of the white plastic piece with your fingers and gently pull directly upward.
- ⚠ Do not pull from the red and black cable as it is not very sturdy and may come undone from the connector.

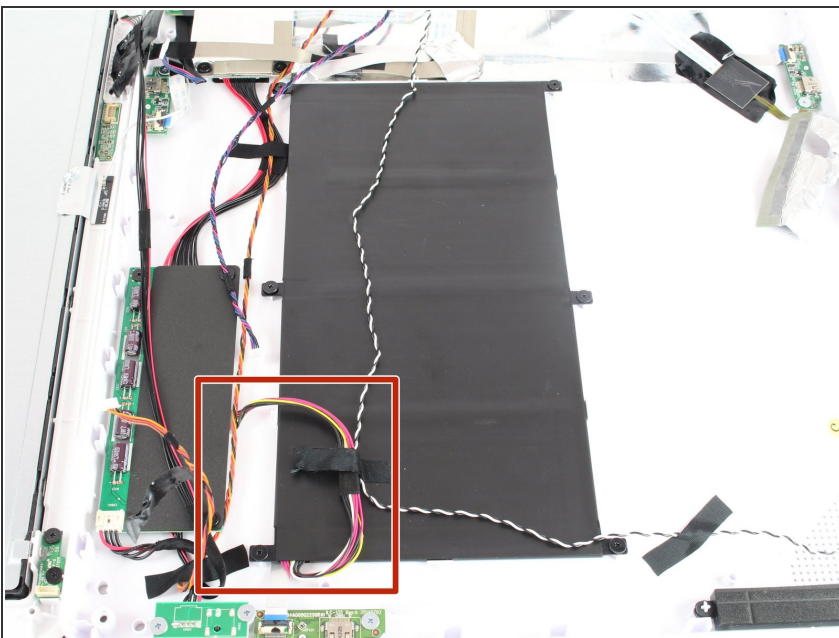


## Step 13 — Battery



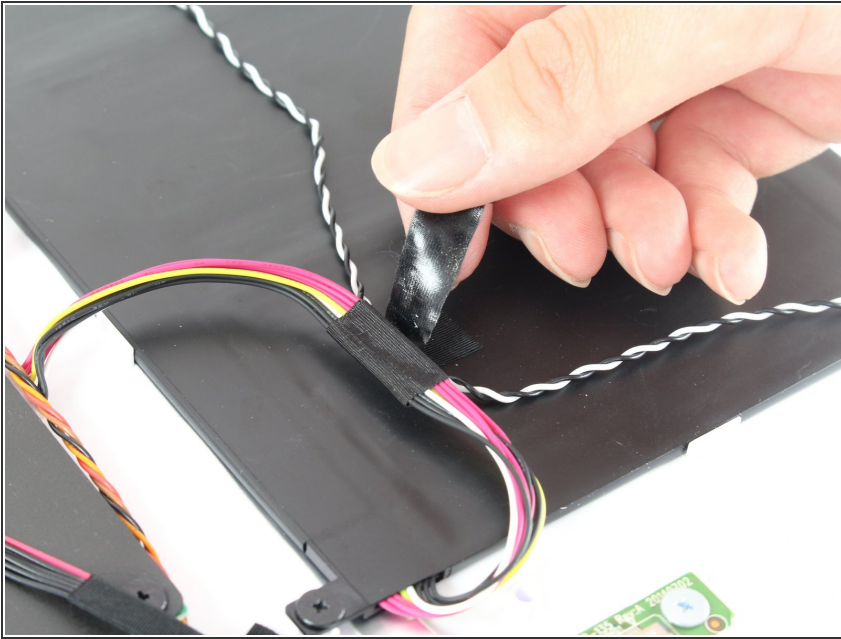
- Locate the battery, the large black rectangular component, on the side with all of the circuit boards.
- ⓘ The battery is a McNair Li-ion Polymer Battery Model #: mlp2462113-4s.

## Step 14



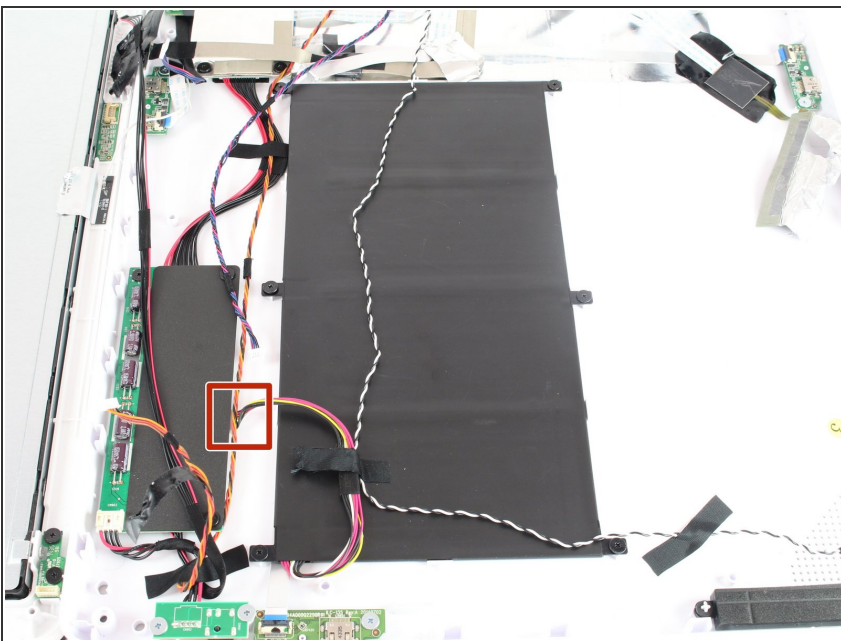
- Locate the bundle of wires connecting the battery to the power regulator, which is right next to the battery.
- ⓘ One bundle of wire contains two black, one yellow/white, and three red wires in this bundle, while the other bundle is a twisted black and white wire taped alongside the previous one.

## Step 15



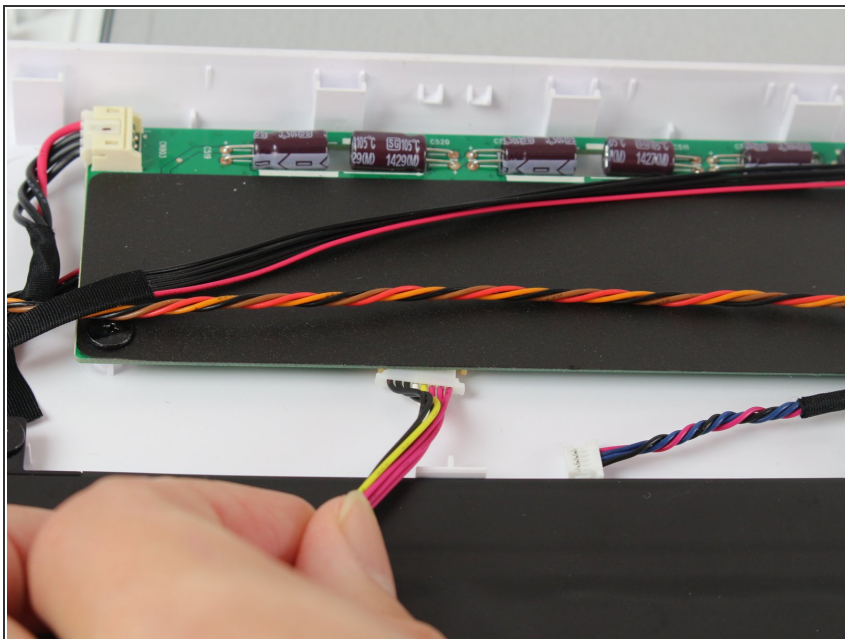
- Remove the black tape holding down the two bundles of wire.
- ⓘ The black and white wire bundle does not connect to the battery, so moving it out of the way will make taking the battery out easier.

## Step 16



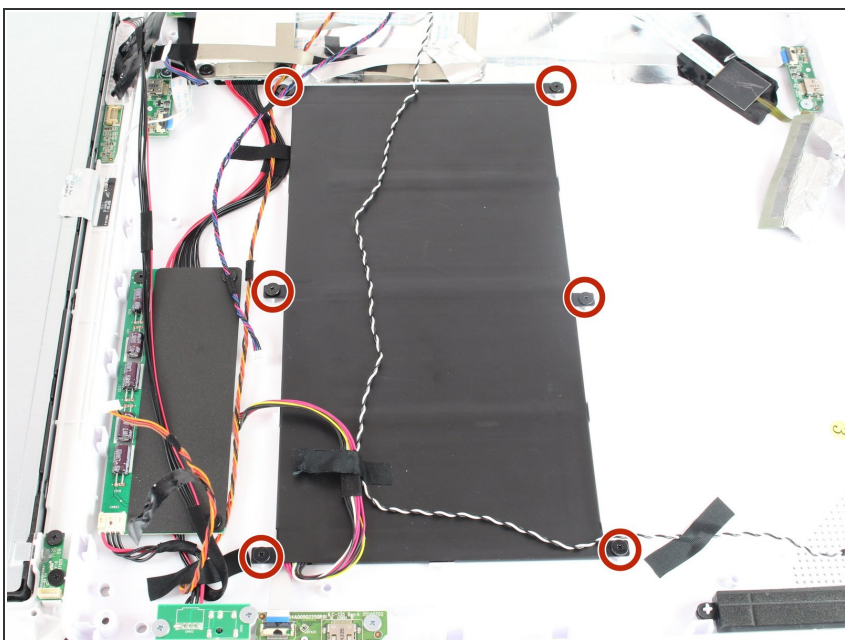
- Locate where the red/black/yellow wire bundle connects to the power adapter.

## Step 17



- Disconnect the wires from the power regulator by pulling the white connector straight out.

## Step 18



- Unscrew the six black 4.5 mm Phillips #1 screws holding the battery in place.
- Lift out the battery and replace with your new one.

To reassemble your device, follow these instructions in reverse order.