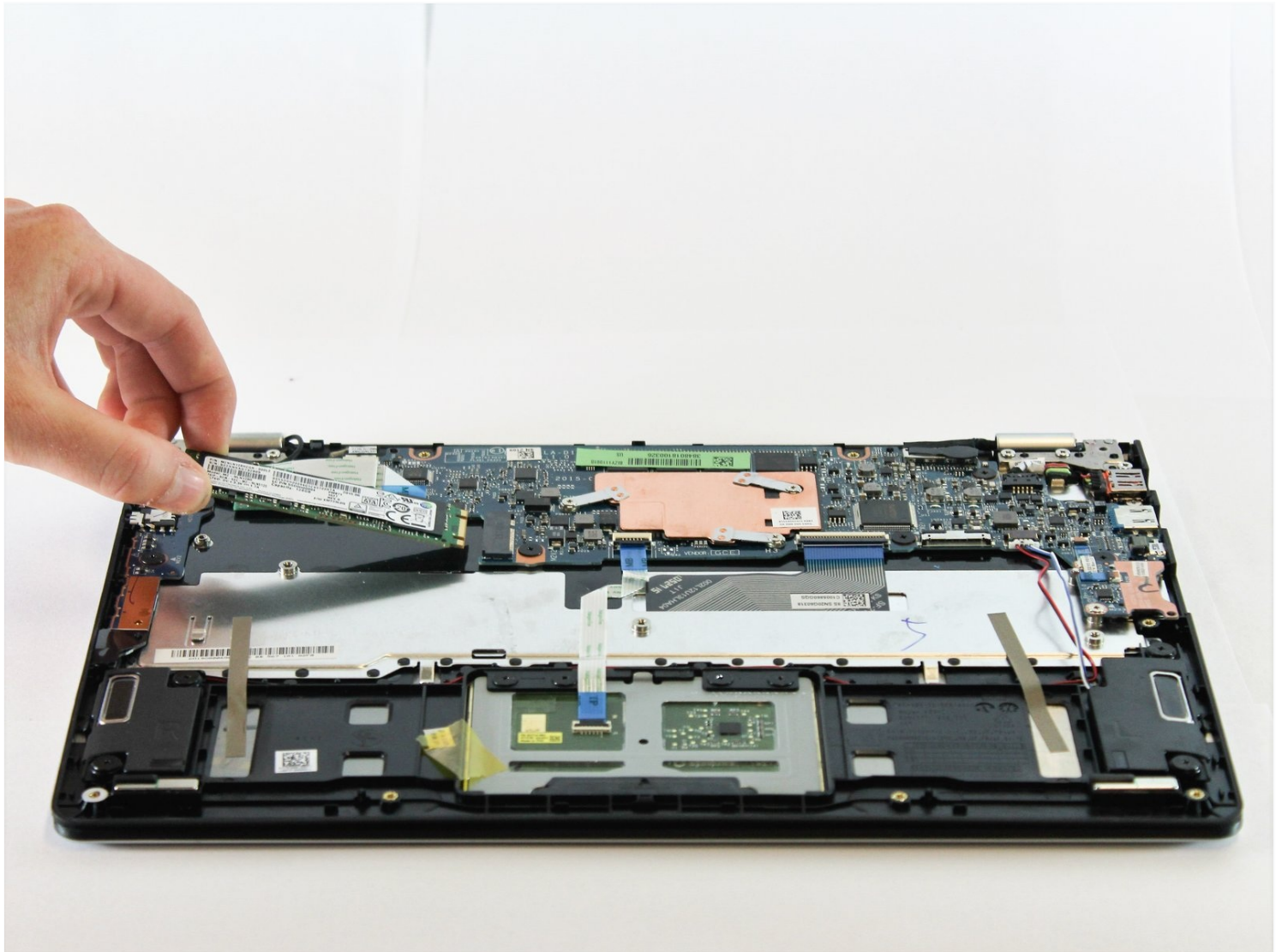




# Lenovo Yoga 700-11ISK Solid State Drive Replacement

The solid state drive stores data and works as...

Written By: Emma Morley



# INTRODUCTION

The solid state drive stores data and works as a type of flash memory. Use this guide to remove the drive from your laptop if you would like to replace or upgrade it.

## TOOLS:

[TR7 Torx Security Screwdriver](#) (1)  
[Phillips #1 Screwdriver](#) (1)

## PARTS:

[Crucial P3 NVMe PCIe M.2 2280SS SSD](#) (1)  
[Crucial P3 Plus NVMe PCIe M.2 2280SS SSD](#) (1)  
[Crucial P5 Plus PCIe M.2 2280SS SSD](#) (1)

## Step 1 — Back Panel



- Flip your device so that the bottom panel is facing up.
- Remove the eleven 5mm Torx T5 screws from the back panel.

## Step 2



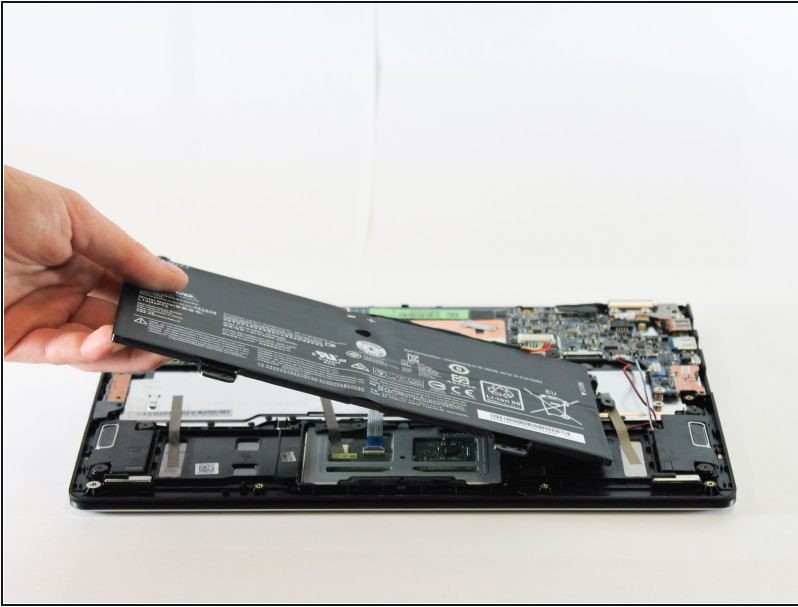
- Use a spudger to unclip clips on the front and near the USB ports on each side
- Lift the back panel off

## Step 3 — Battery



- Remove the two 3mm Phillips #1 screws holding the battery to the laptop chassis.
- Disconnect the battery from the IO board by holding the connector by the sides and gently pulling the connector out.

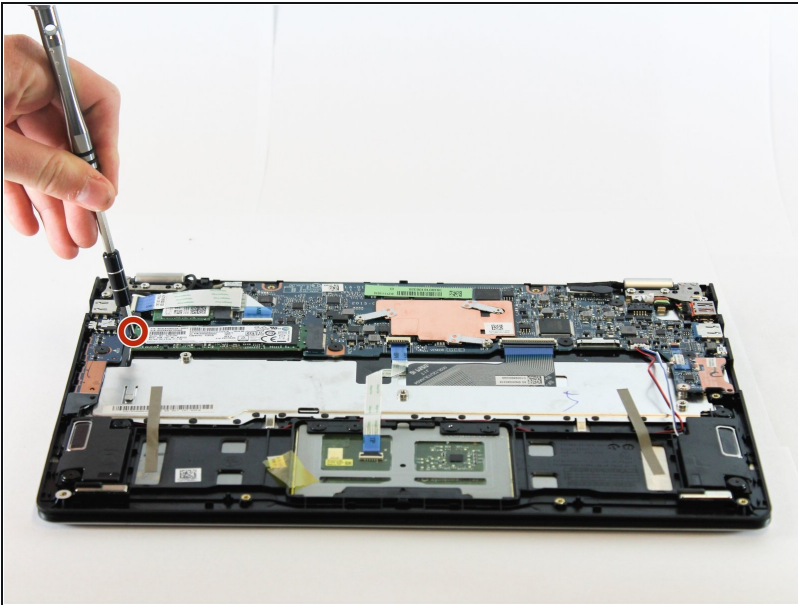
## Step 4



- Carefully remove the battery from the laptop.

⚠ Make sure that all wires still connected to the laptop are out of the way and not pulled out with the battery.

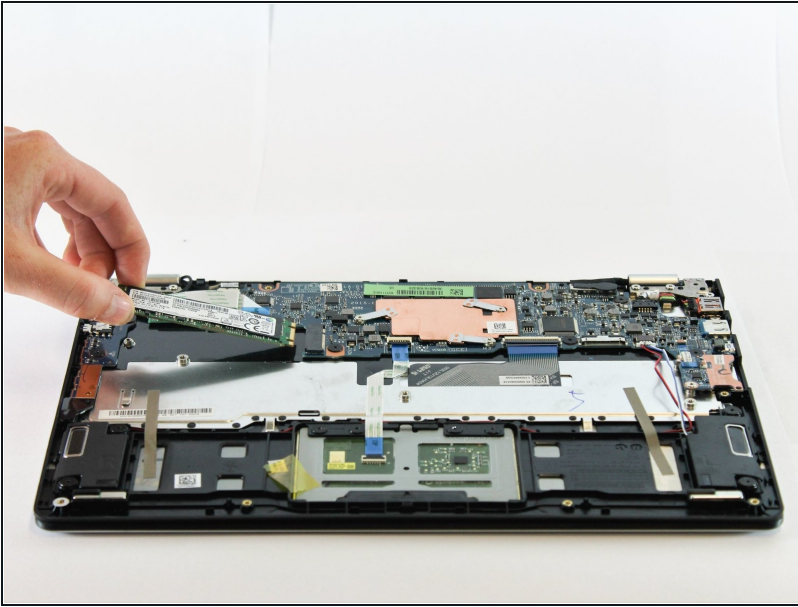
## Step 5 — Solid State Drive



- Remove the one 2mm Phillips #1 screw holding the hard drive to the laptop.



## Step 6



- Pull the solid state disk out of the connector and lift it out of the laptop.
- ☑ Make sure the hard drive is oriented correctly with the label facing up before re-inserting.

---

To reassemble your device, follow these instructions in reverse order.