



Xbox 360 S Panel removal

This guide will explain how to remove the Hard Drive, take apart the Bottom Panel, and the Top Panel.

Written By: Jack Sweet



INTRODUCTION

This guide will explain how to remove the Hard Drive, take apart the Bottom Panel, and the Top Panel.

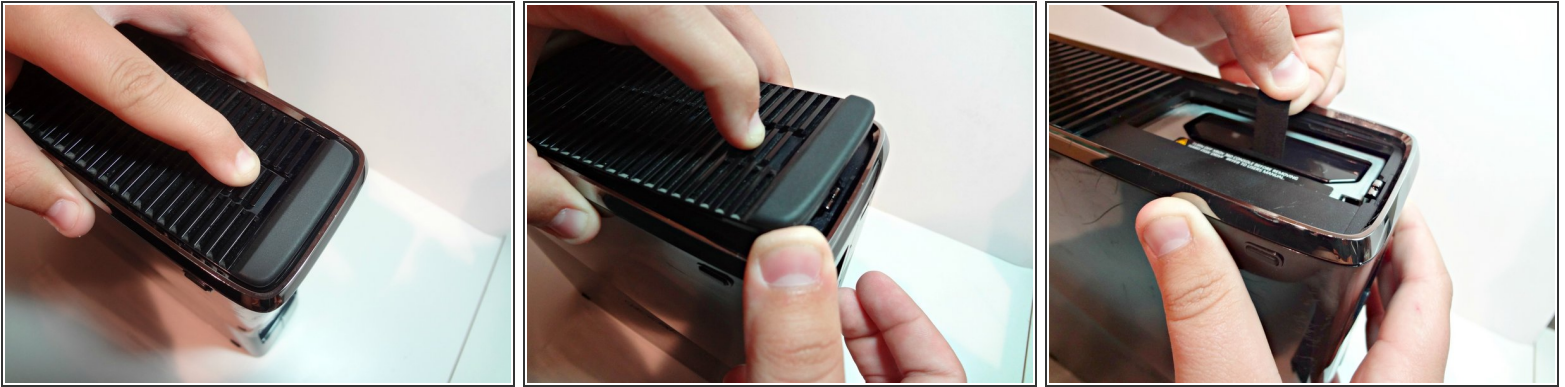


TOOLS:

- [Metal Spudger](#) (1)
- [Fingers](#) (10)

Preferably in good condition

Step 1 — Hard Drive



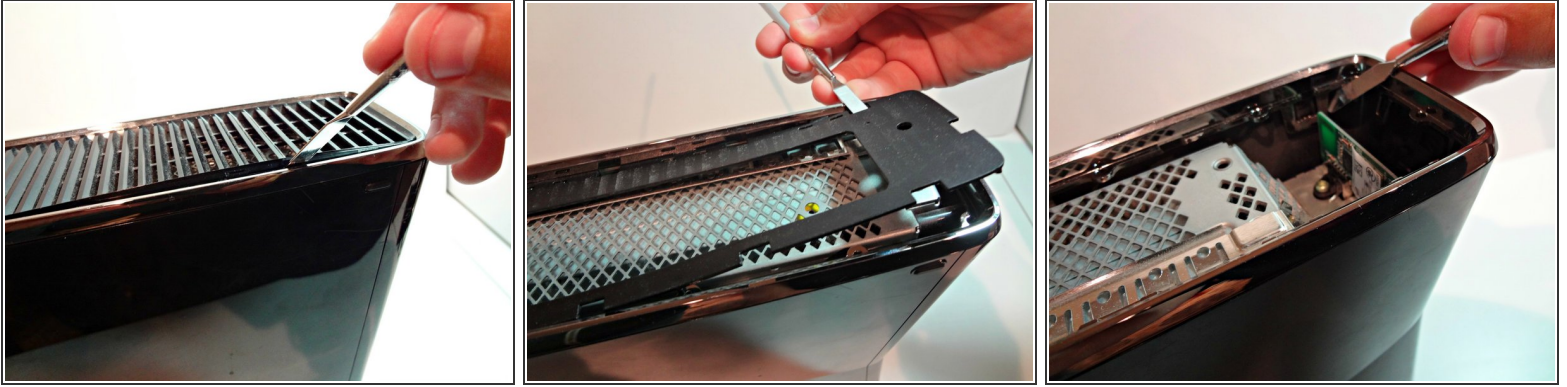
- Flip the Xbox over and you will see three separate prongs. Pull those back and pull up, then you will see the hard drive. Pull the rectangle fabric piece up.
- The hard drive should be removed.

Step 2 — Bottom Panel



- Move the Xbox with the hard drive facing toward the right.
- Then insert your Metal Spudger in between the silver ring and the vent. You should here a pop noise which is the clip popping out.
- Rotate the tool away from the Xbox prying open the bottom plate. Continue that step for all the remaining clips.

Step 3 — Top Panel



- The top panel is very similar to the bottom panel removal. There will be thirteen clips you need to undo.
- Make sure the front of the Xbox is facing towards the left. Then use the tool undo the clips just like you did on the bottom panel.
- DO NOT BREAK ANY OF THE CLIPS.