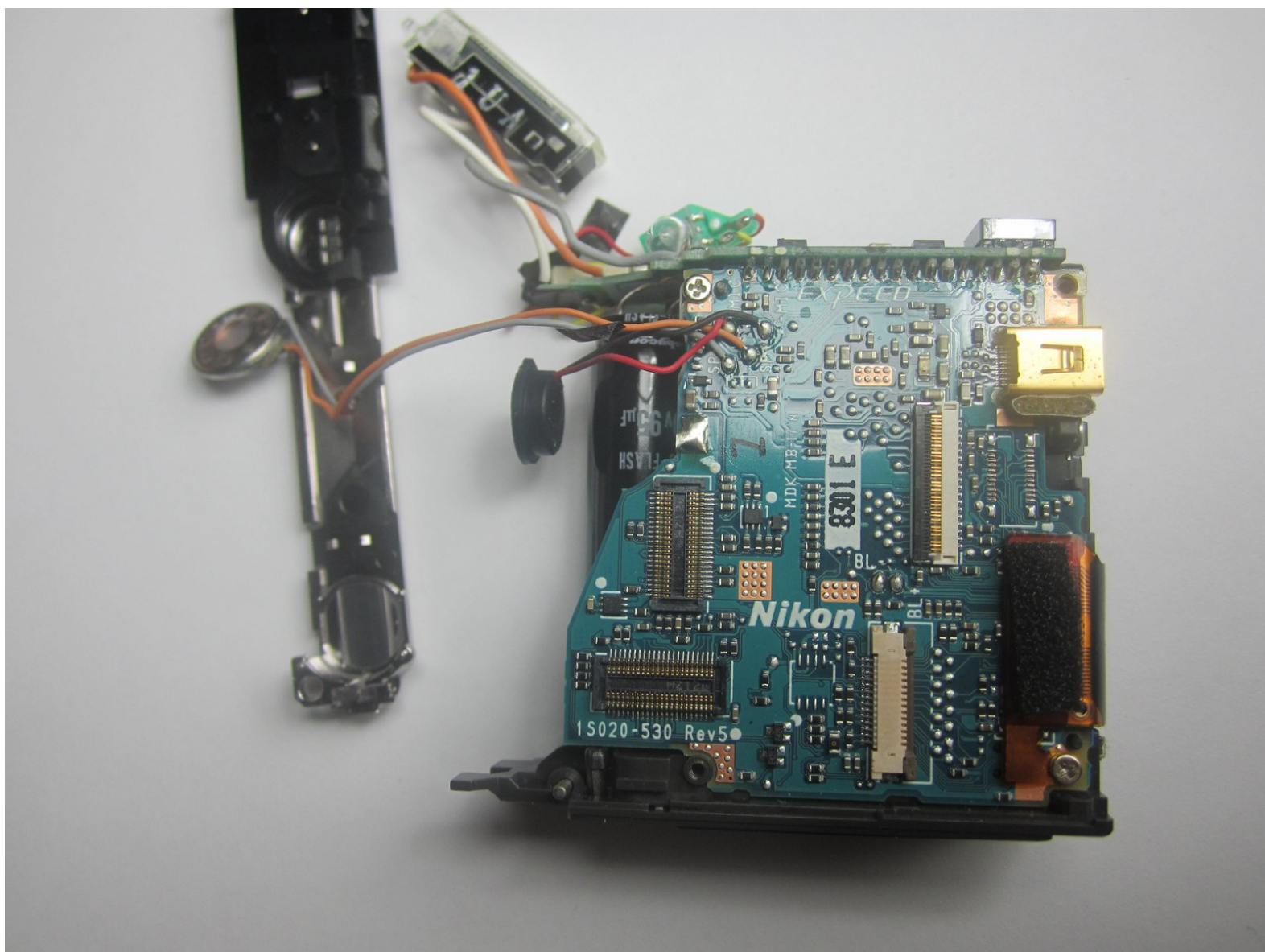




Nikon CoolPix S600 Motherboard Assembly Replacement

Removing the camera's mother board

Written By: andreas anggasastra





TOOLS:

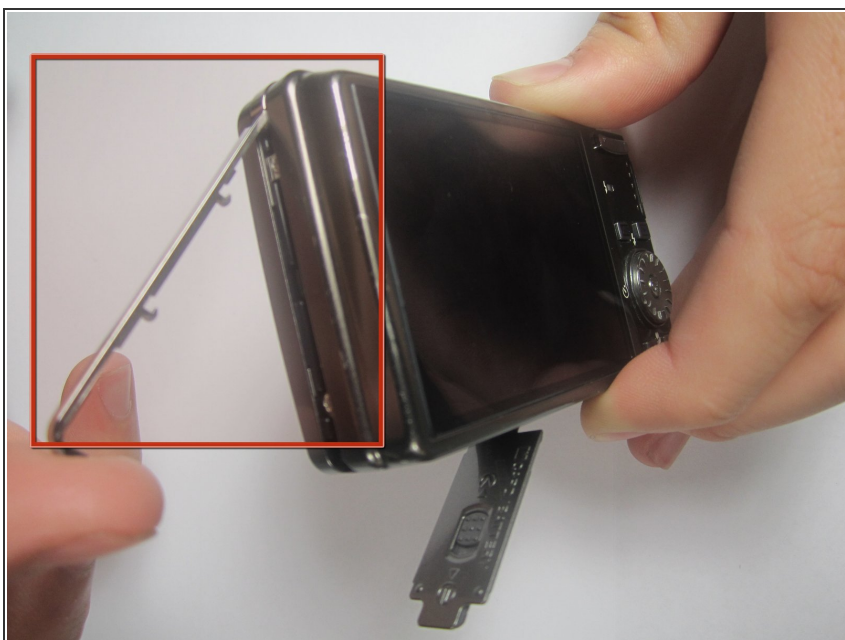
- [Phillips #00 Screwdriver](#) (1)
 - [Tweezers](#) (1)
-

Step 1 — Front and Rear Casing



- With the lens facing forward, remove the one 4.2 mm screw on the bottom right hand corner of the camera.

Step 2



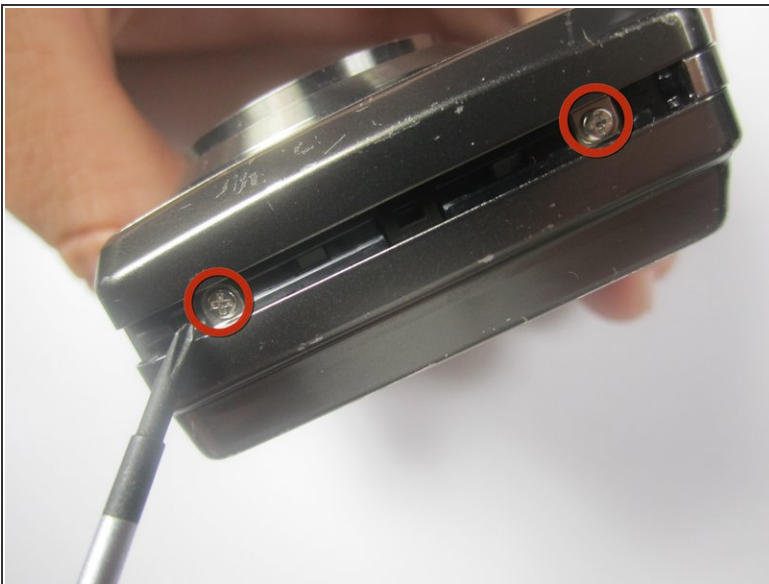
- Remove the chrome side cover from the body of the camera.

Step 3



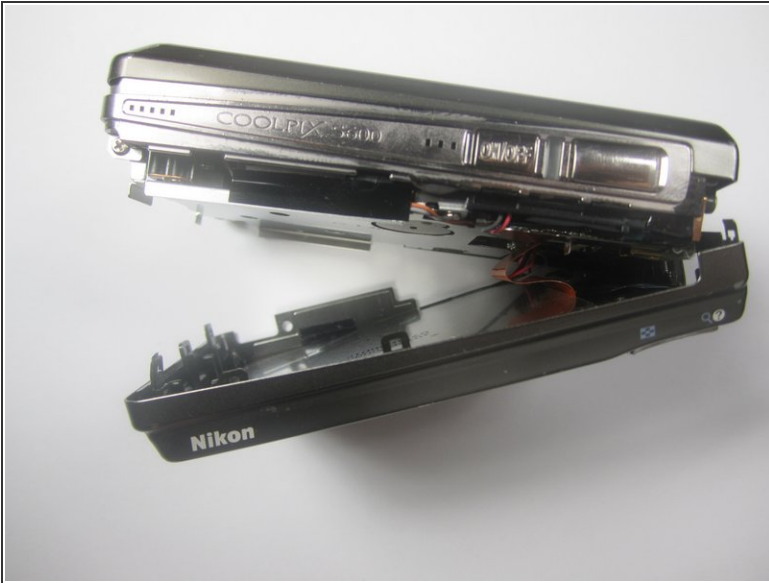
- Remove the four 3.2 mm screws on the bottom of the camera.

Step 4



- Remove the two 3.2 mm screws from the right side of the camera (with lens is facing forward)
- Remove the one 3.2 mm screw from the left side of the camera (with lens facing forward)

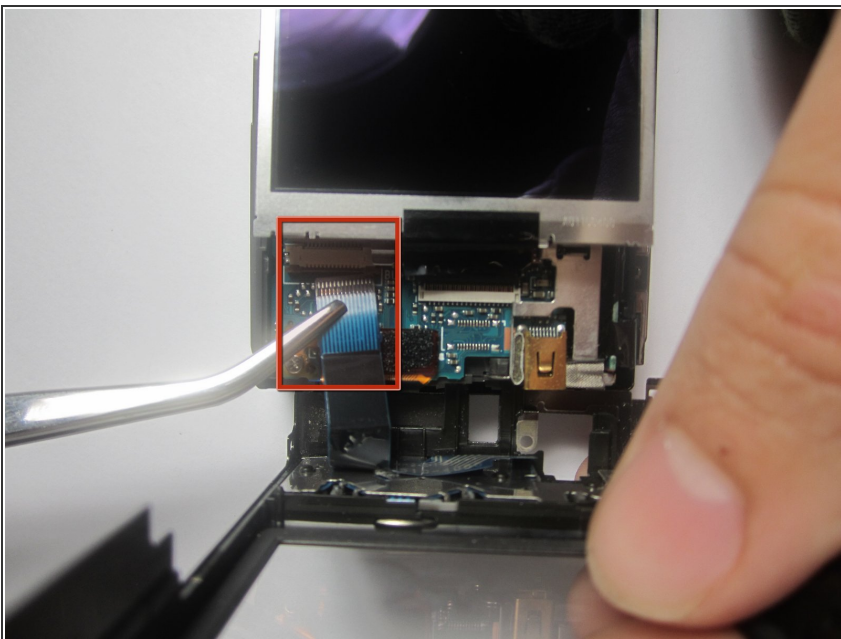
Step 5



- Gently separate the back cover from the body of the camera.

⚠ The back casing will still be connected to the circuit board by a ribbon

Step 6



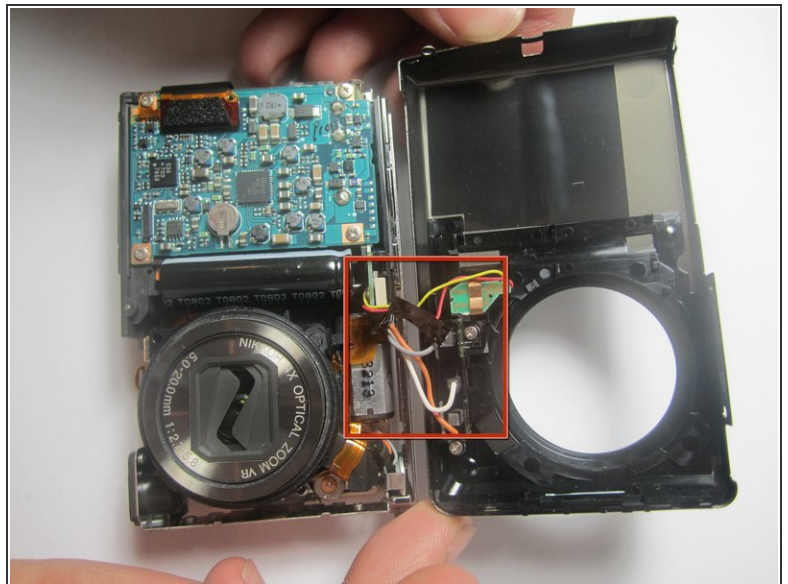
- Use the tweezers to disconnect the ribbon from the circuit board.

Step 7



- Remove the one 2.6 mm screw from the left side of the camera (with the lens facing forward)

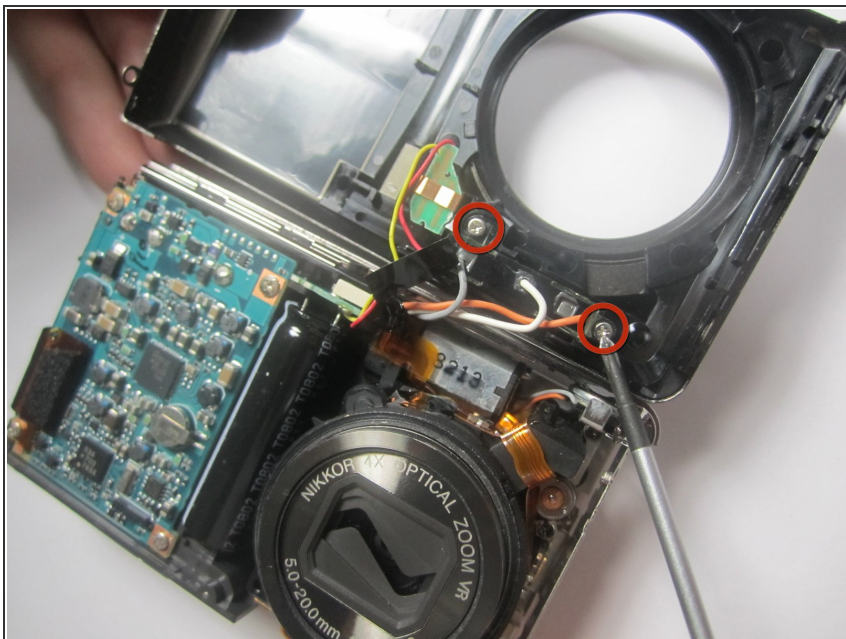
Step 8



- Gently separate the front cover from the body of the camera.

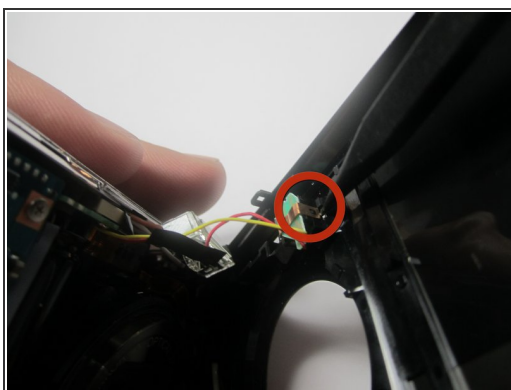
⚠ The front casing will still be connected to the circuit board by a few wires

Step 9



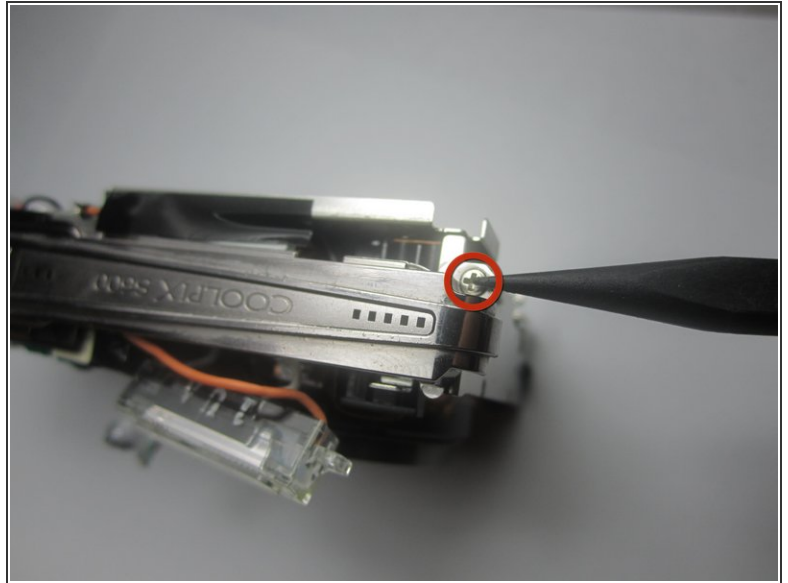
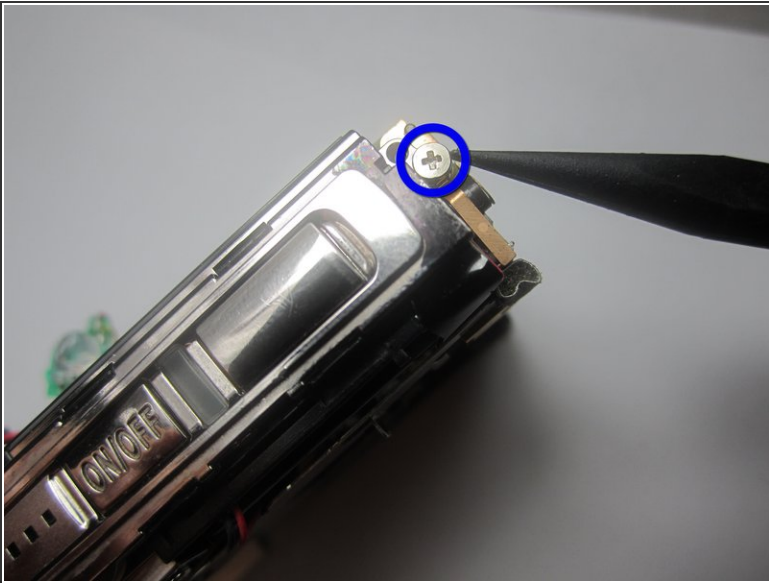
- Remove the two 3.2 mm screws that hold the flash to the front cover.

Step 10



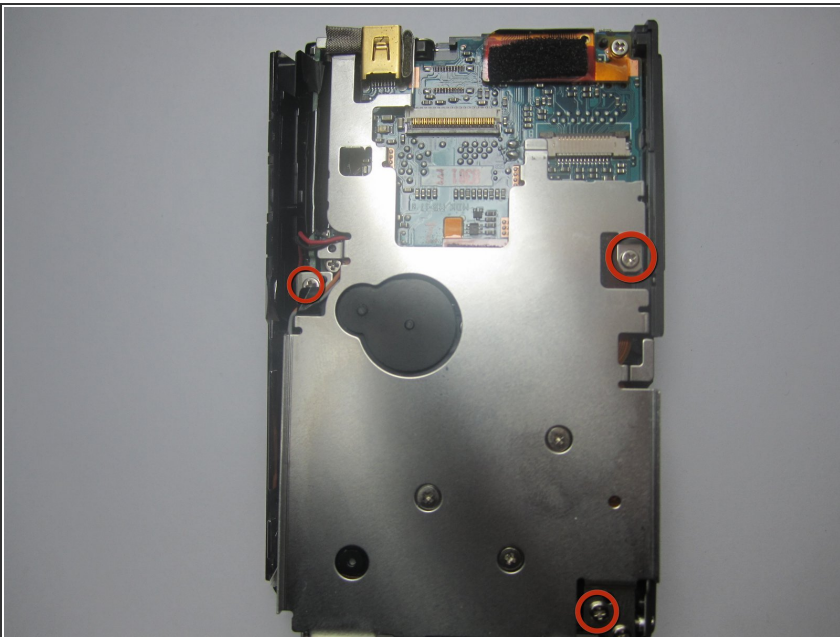
- Use the Spudger to remove the copper colored light bulb clip.
- Remove the front cover entirely from the camera body.

Step 11 — Lens Assembly



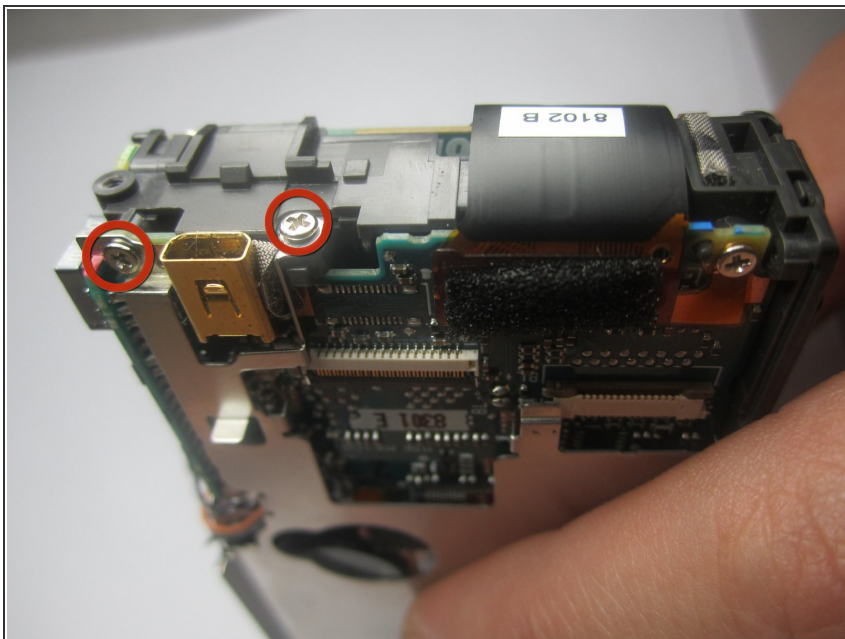
- From the top view of the camera, remove the one 5.8 mm screw.
- From the top view of the camera, remove the one 2.8 mm screw

Step 12



- Remove the three 3.4 mm screws from the back side of the camera.

Step 13



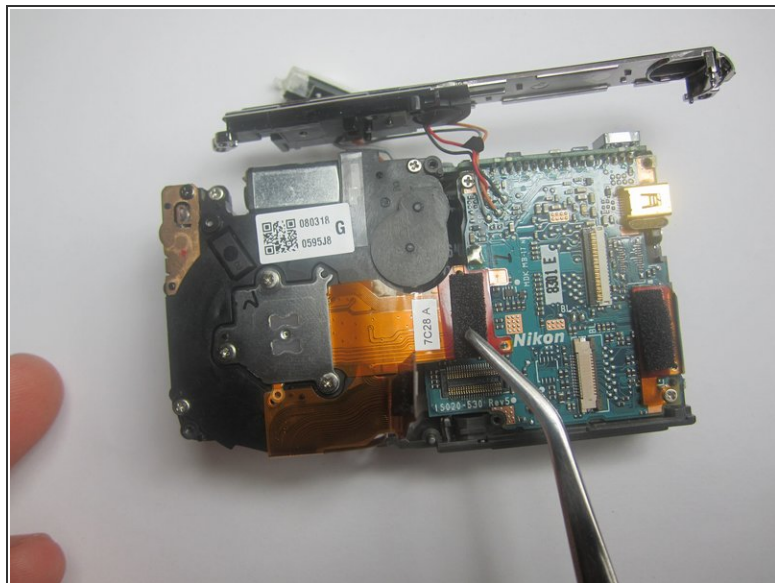
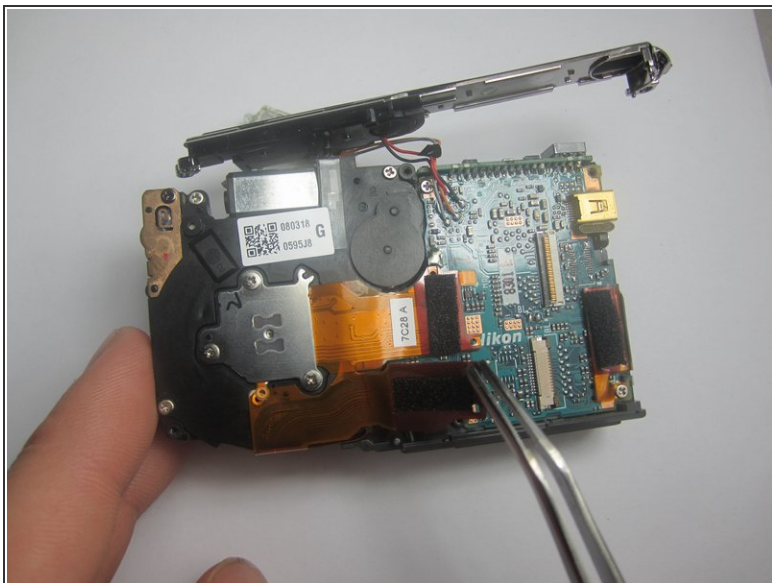
- Remove the two 3.4 mm screws from the side of the camera.

Step 14



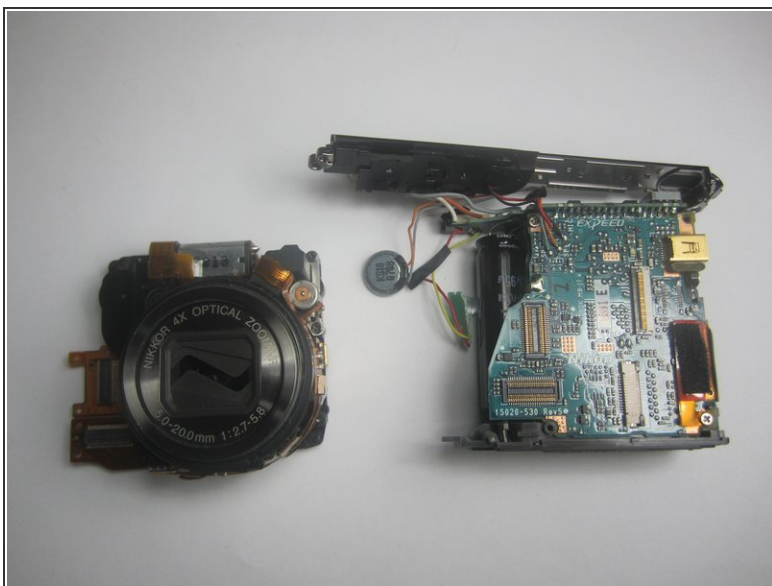
- Separate the two metal body pieces from the rest of the camera.

Step 15



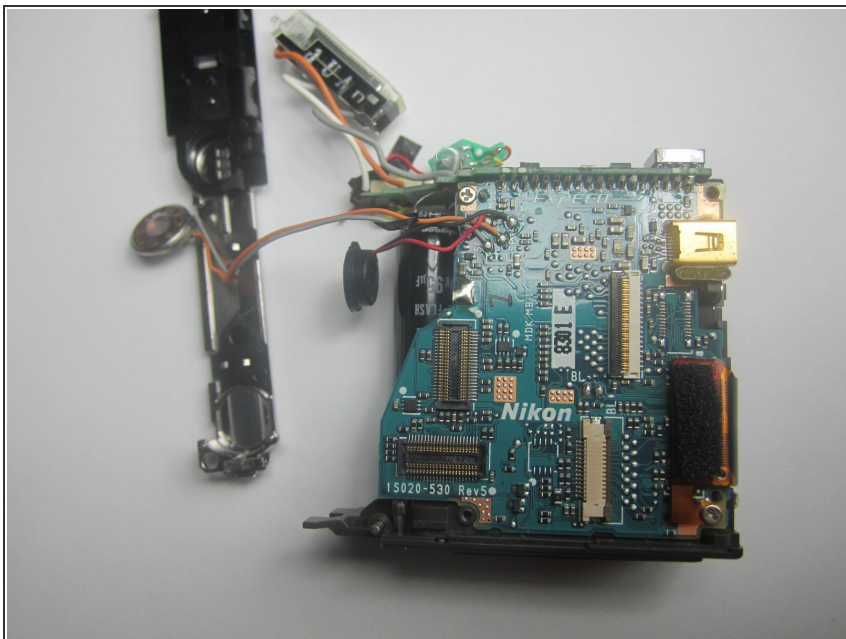
- Gently remove the two ribbons connecting the lens to the mother board.

Step 16



- Gently separate the camera lens from the mother board.

Step 17 — Motherboard Assembly



- The mother board is permanently fixed to the battery housing.
- ⓘ Mother board cannot be taken a part any further.

To reassemble your device, follow these instructions in reverse order.