



Lenovo B575-1450 Battery Replacement

This guide demonstrate how to remove the battery of Lenovo B575.

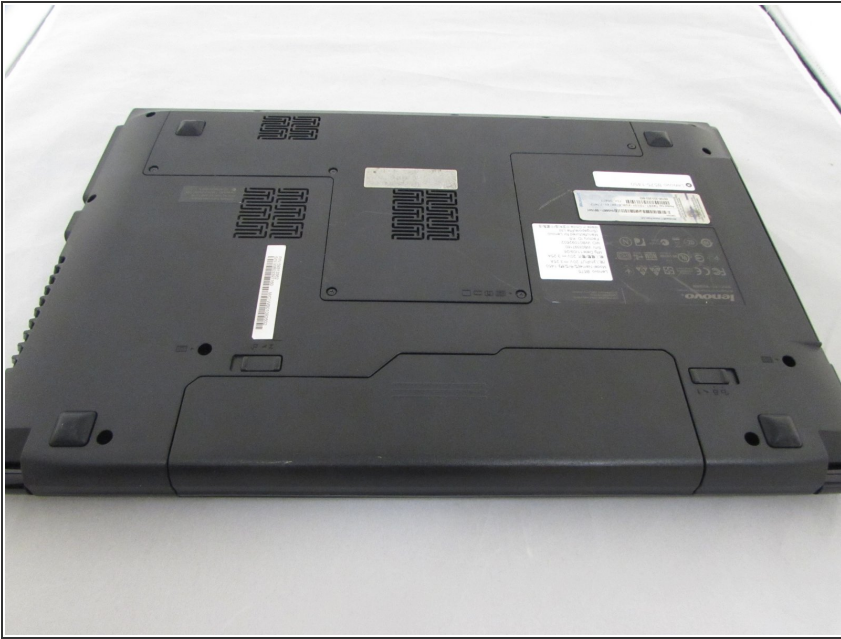
Written By: Carlo Calvillo



INTRODUCTION

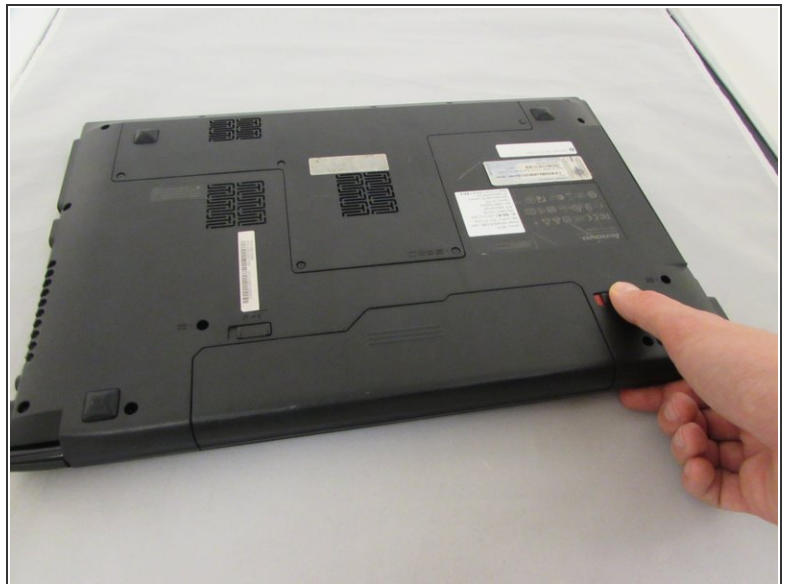
This guide will show you how to safely remove and replace your lab top battery. There is no risk to replacing the battery.

Step 1 — Battery



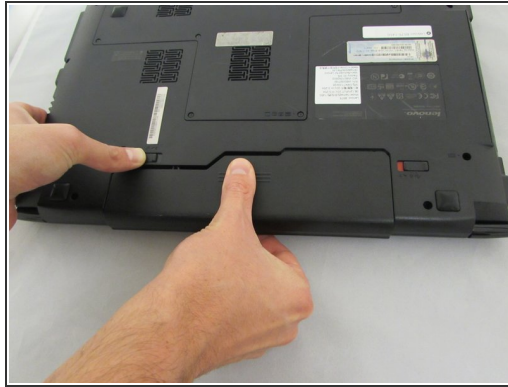
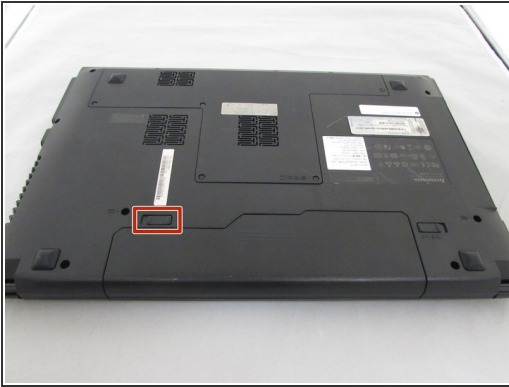
- Turn off the computer.
- Disconnect the charger from the computer.
- Flip the computer upside down.

Step 2



- Push the right-hand switch outward into the "unlocked" position.

Step 3



- While holding the battery, use your other hand to push the left clip to the left and pull the battery out.

To reassemble your device, follow these instructions in reverse order.