



Filter Housing Replacement for GE Refrigerators model **GSS25KSW / GSF25KGW**

Simple step-by-step instructions to replace the...

Written By: Giancarlo Marruffo



INTRODUCTION

Simple step-by-step instructions to replace the Refrigerator Water Filter Head & Tube Assembly WR17X12203.

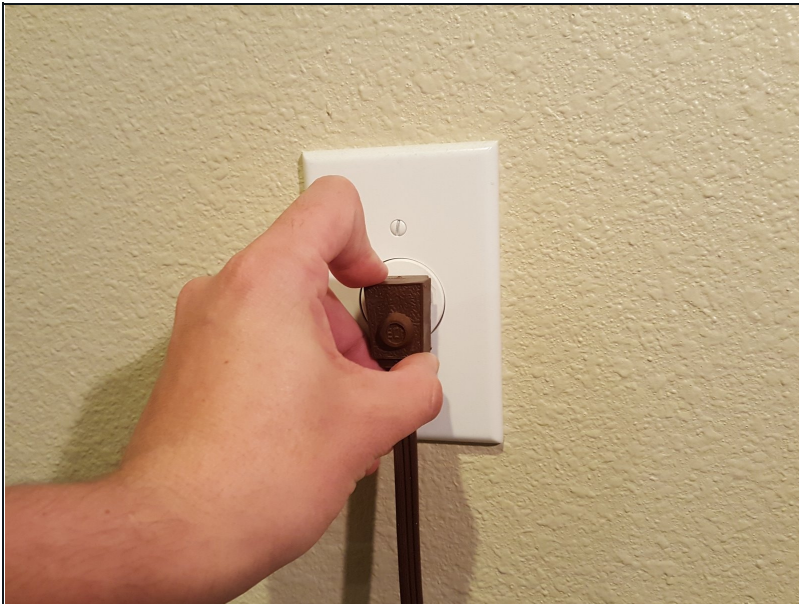
TOOLS:

7 mm Nutdriver (1)
8mm Nut Driver (1)
13 mm Open End Wrench (2)

PARTS:

WR17X12203 (1)

Step 1 — Filter Housing for GE Refrigerators



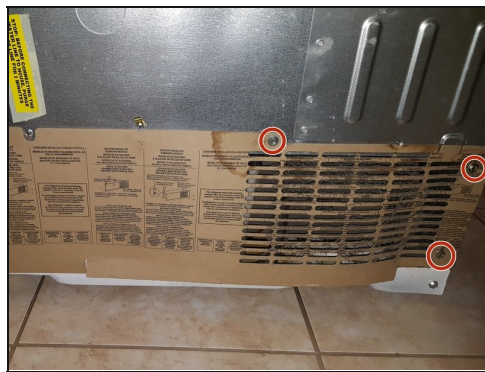
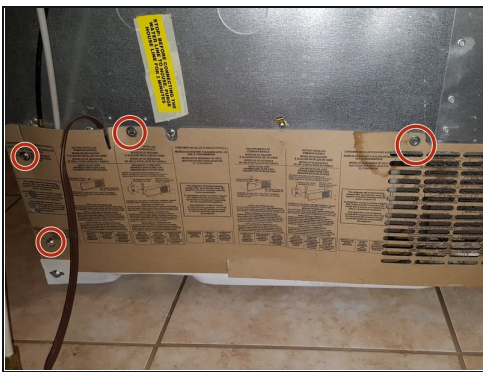
- Disconnect the electric plug from the wall.

Step 2



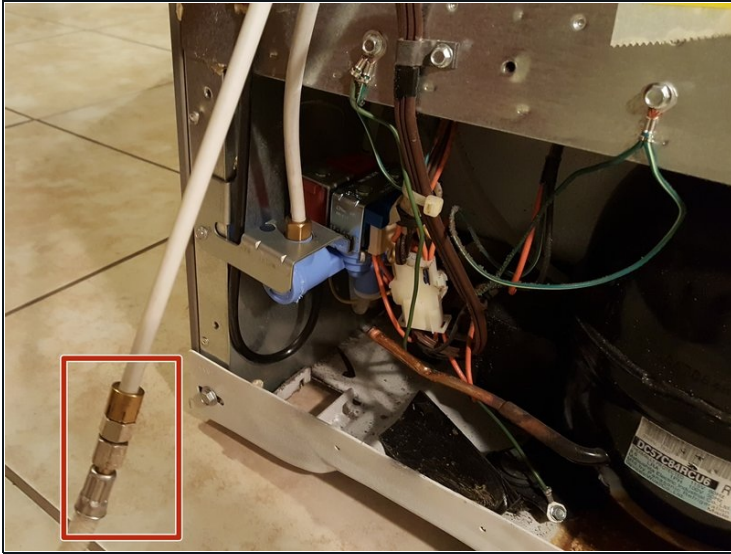
- Turn off or push down off water main valve from the wall.

Step 3



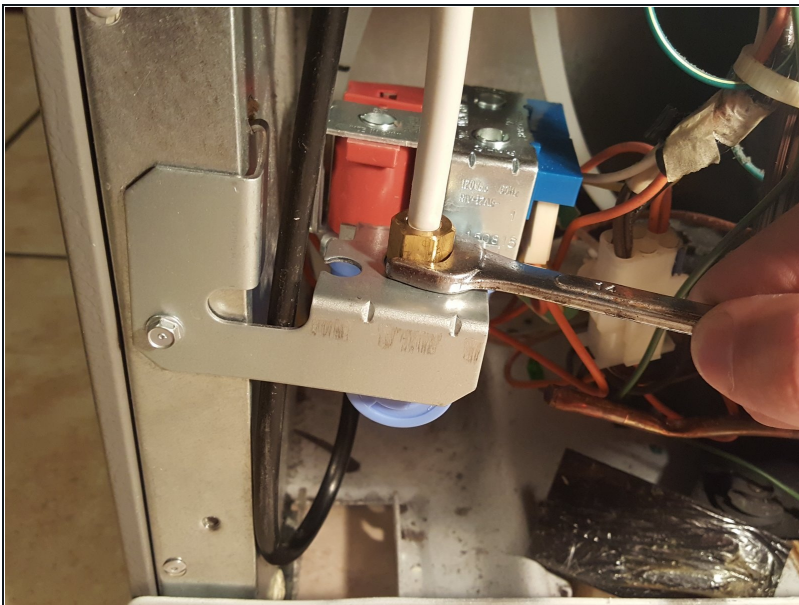
- Remove the back panel with 6 screws from the back panel using a 8 mm nut driver.

Step 4



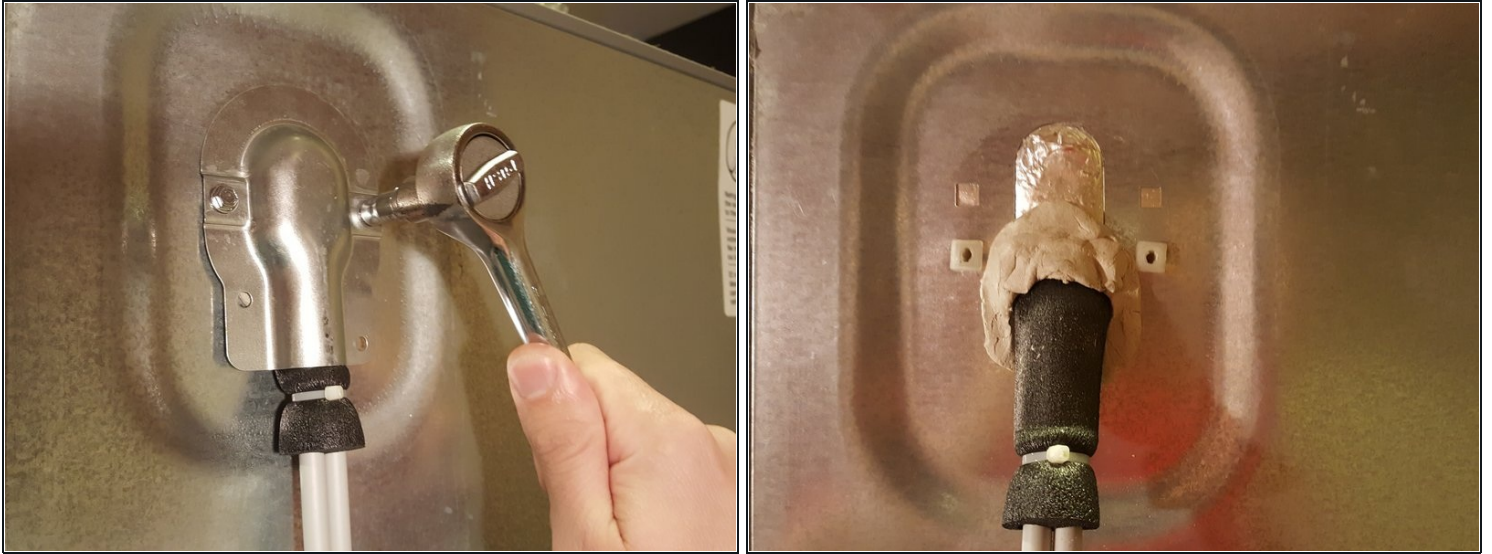
- Disconnect the water supplied line from the refrigerator using two 13 mm open-end wrenches.
- Use a little bucket to receive the water from the water lines.

Step 5



- Disconnect the water line from the water inlet valve using and open-end wrench size 15mm

Step 6



- Disconnect the water line cover removing 2 screws using a 7 mm nut driver.
- Pull up the gum seal compound.

Step 7



- Push the left side of the filter cover and pull it straight out.

Step 8



- Remove the 2 screws on top of the housing using 7 mm nut driver.
- Pull the housing and filter out slowly.
- Remove the filter by turn it counterclockwise

To reassemble your device, follow these instructions in reverse order.