



Sony Vaio SVE111B11L Motherboard Replacement

Use this guide involving the Sony Vaio...

Written By: John Noll



INTRODUCTION

Use this guide involving the Sony Valo SVE111B11L to replace its motherboard. The motherboard is the main connection point for the whole computer. It is recommended to use the two tools provided by iFixit: the Phillips #0 screwdriver and the iFixit opening tool.


TOOLS:

[iFixit Opening Tool](#) (1)

[Phillips #0 Screwdriver](#) (1)

Step 1 — Battery



 Remove the charging adaptor. Some charge may still be in the battery or computer. **DO NOT** touch connectors or copper yellow connector.

- Locate the battery on the bottom of the computer.
- Flip the computer so that the battery faces you.

Step 2



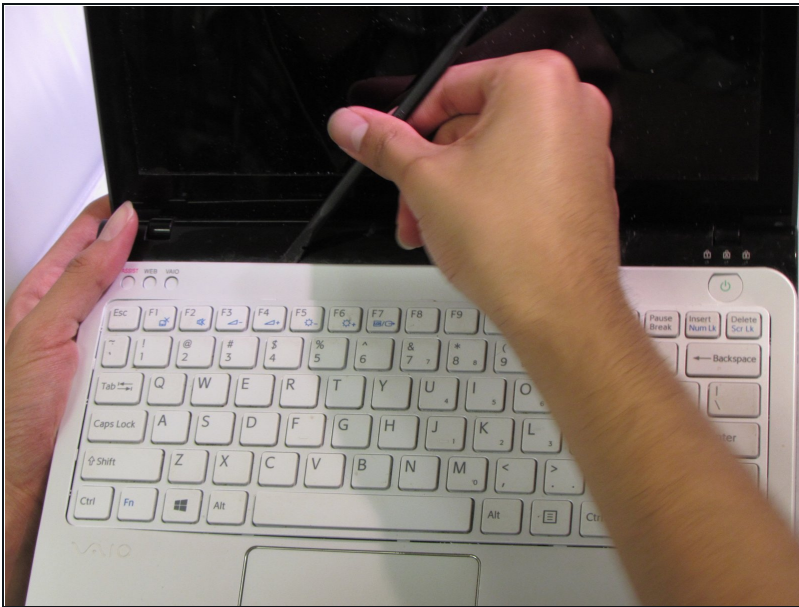
- Locate the two latches with the words “lock” and “release” on them.

Step 3



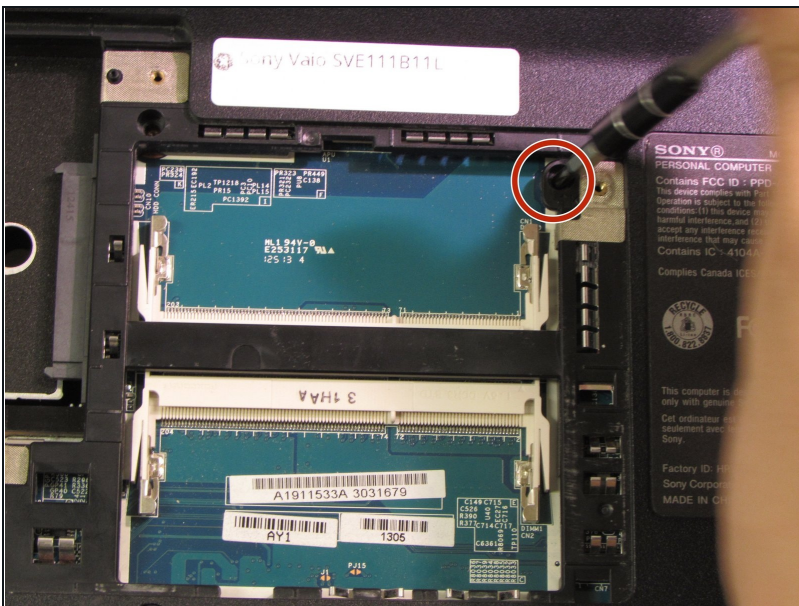
- Push the latches towards each other and lift the battery to remove it.

Step 4 — Keyboard Assembly



- Remove the memory door on the bottom of the computer to access the screw for the keyboard.
- ❗ The screws for the memory door do not come out.

Step 5



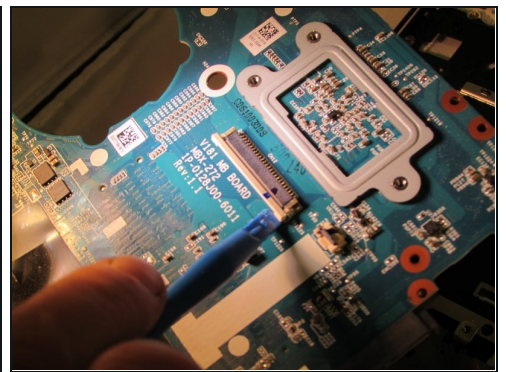
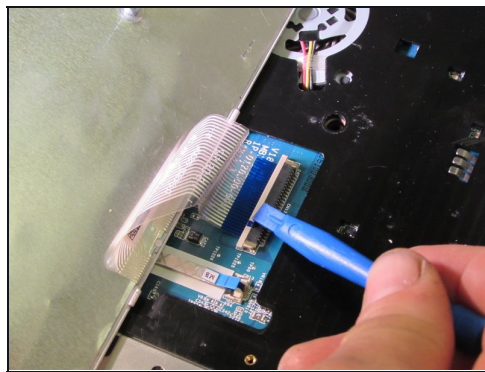
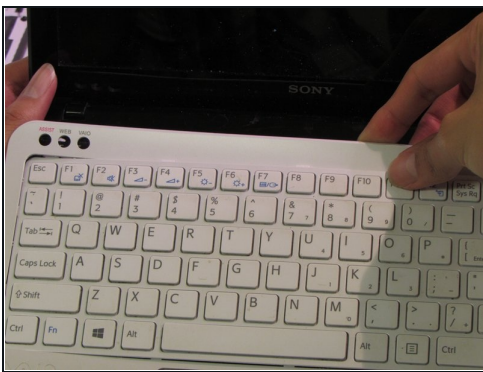
- Remove the 6.7 mm screw that holds the keyboard assembly in place.

Step 6



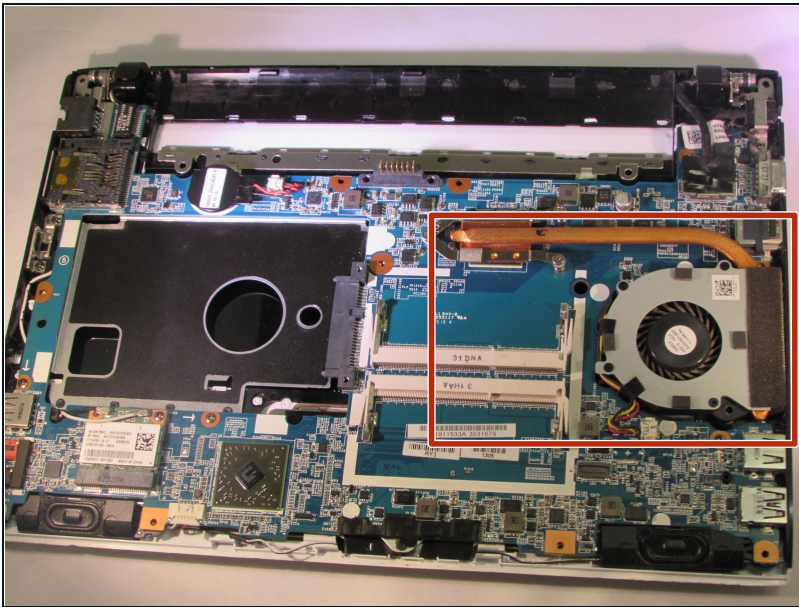
- ⓘ Be careful not to break the keyboard wire connection.
- Slide the wires out, away from the solder connections.
- Flip the computer over and open it.

Step 7



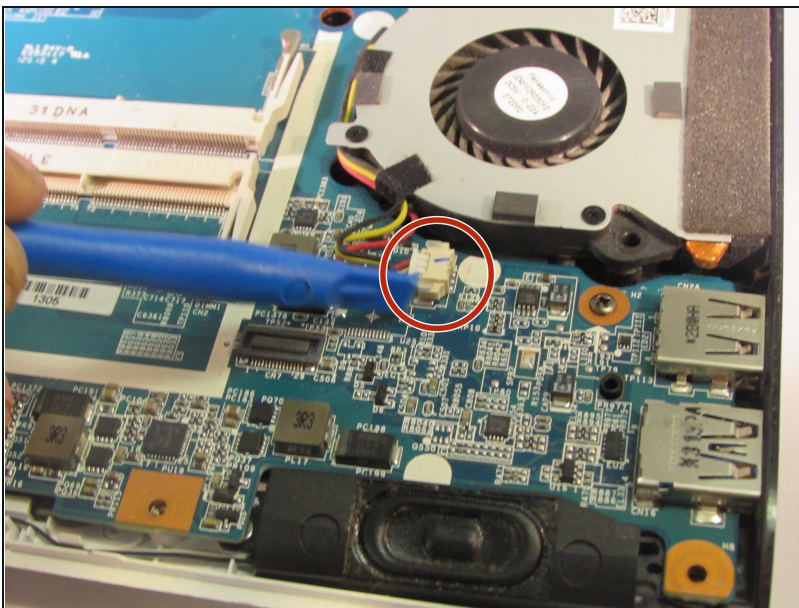
- Gently pry the keyboard assembly from the screen side, using an opening tool. You will need to lift the keyboard about two inches.
- Using an opening tool, gently pull out and slightly up on the connector clip.
- Gently lift the keyboard assembly up and out.

Step 8 — Fan



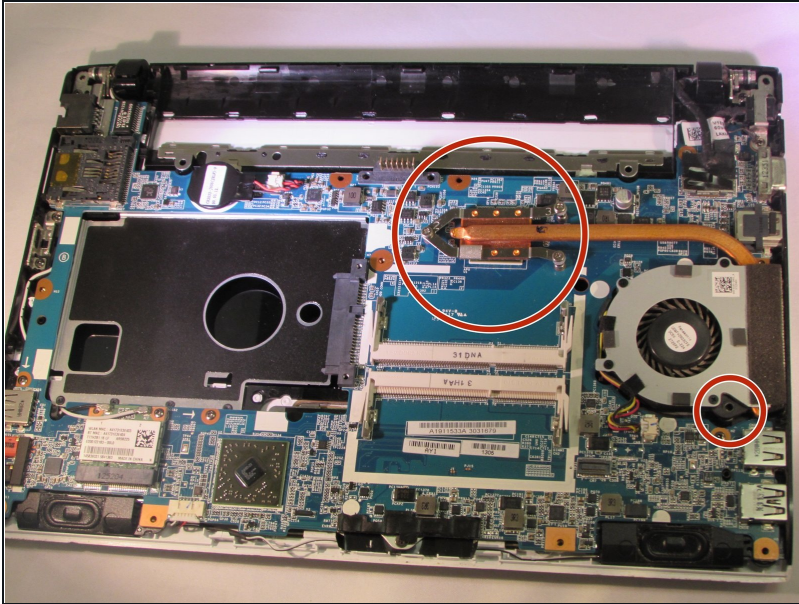
- Locate the fan and heat-sink.

Step 9



- Locate the wires and connectors, and gently unplug them.

Step 10



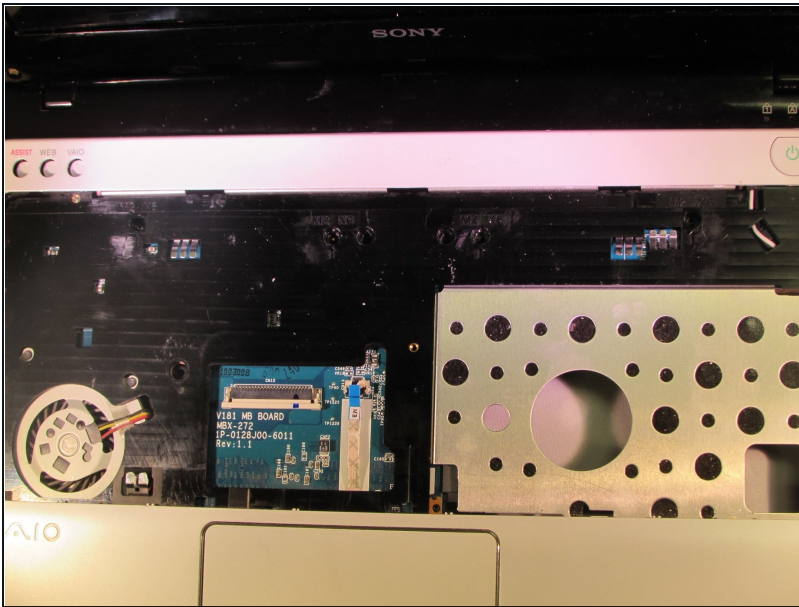
- Locate and remove the 6.7 mm screws that hold the fan assembly.

Step 11



- Gently lift the fan assembly up and out.

Step 12 — Motherboard

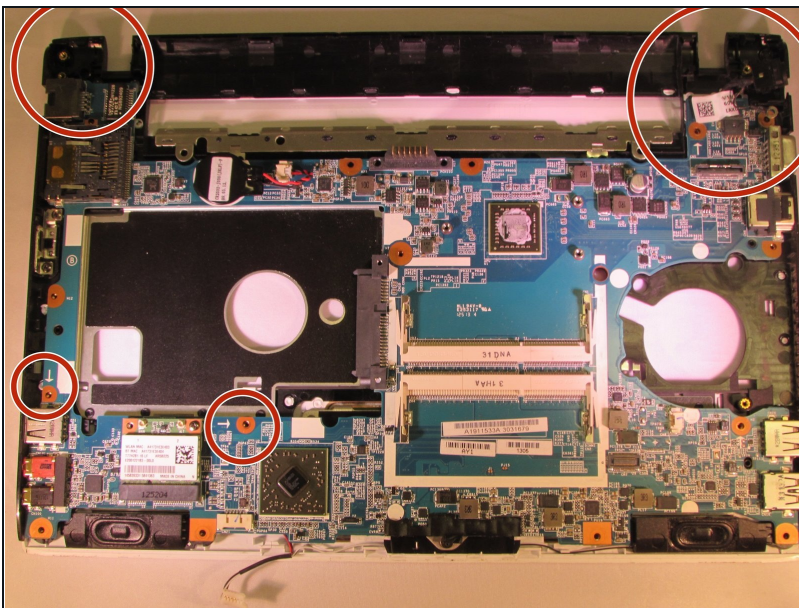


⚠ Remove charging adaptor. Some charge may still be in the battery or computer.

⚠ DO NOT touch connectors or copper yellow connector.

- Take the covers on the bottom of the laptop off.

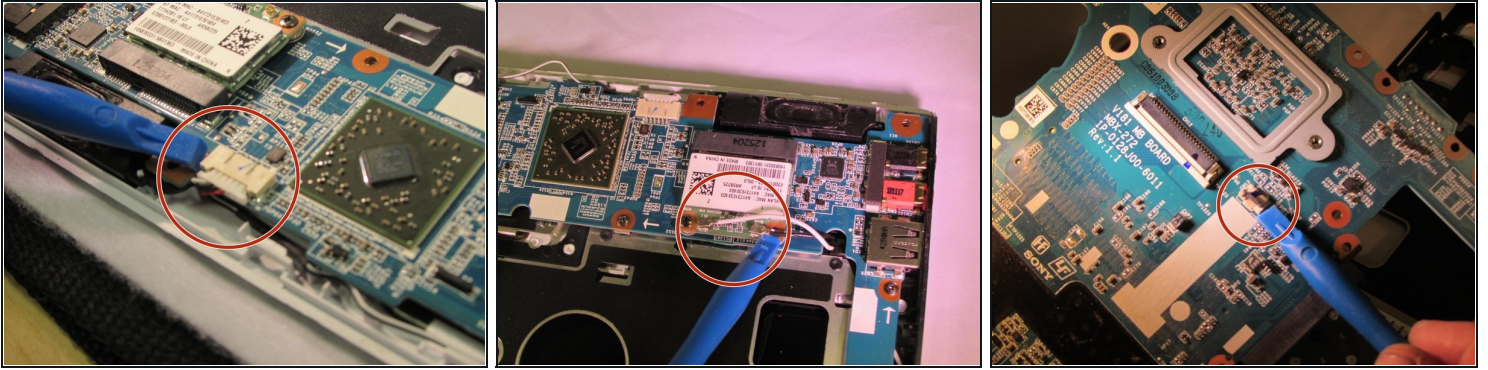
Step 13



- Locate and remove the screws holding the motherboard down.

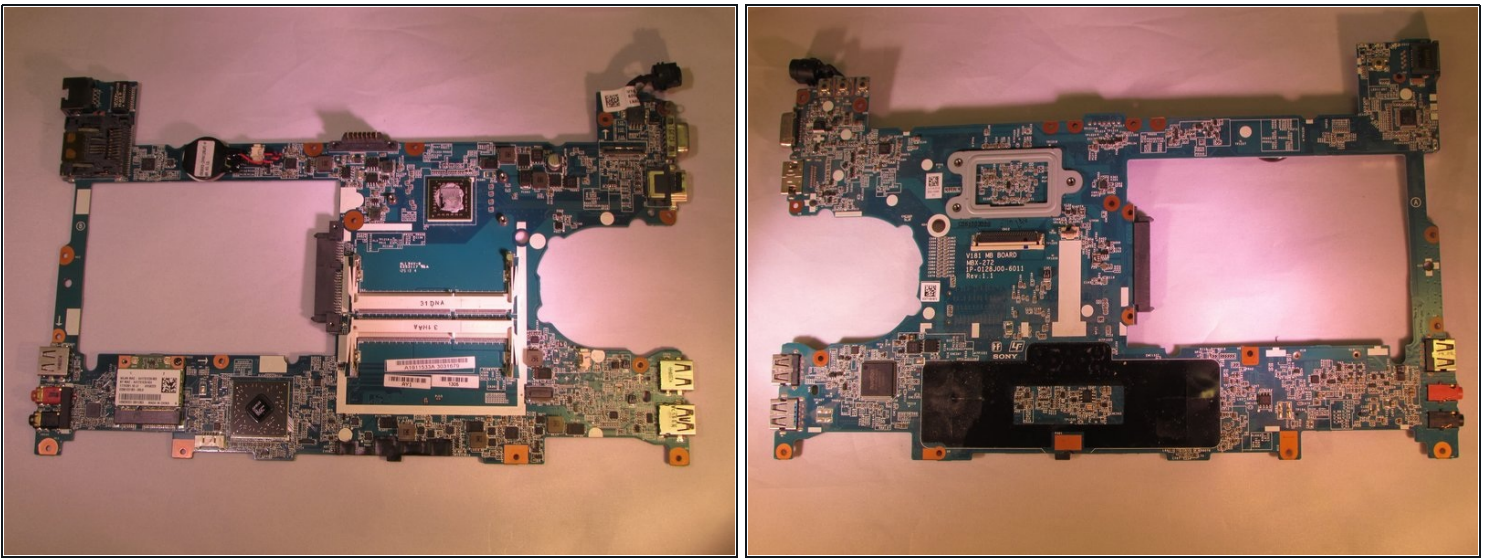
- Screws: L 4.6mm X D 1.85mm

Step 14



- Locate the wires and connectors and remove them from the motherboard.

Step 15



- Lift the mother board out and safely put it to the side.

To reassemble your device, follow these instructions in reverse order.