



Asus ROG G751JL-BB17T29 Battery Replacement

Repair or replace a dead battery in an Asus ROG G751JL.

Written By: Kristofer Cesaroni



INTRODUCTION

Use this guide to repair or replace a dead or worn out battery in an Asus ROG G751JL.



TOOLS:

- [iFixit Opening Tool](#) (1)
- [iFixit Opening Picks \(Set of 6\)](#) (1)
- [Phillips #00 Screwdriver](#) (1)
- [Spudger](#) (1)
- [Phillips #0 Screwdriver](#) (1)



PARTS:

- [Asus A42N1403 Replacement Laptop Battery](#) (1)

Step 1 — Remove the RAM access door



- Use an opening tool to pry up the small rubber cover on the upper right corner of the RAM access door.

Step 2



- Remove the 5.3 mm Phillips #00 screw securing the RAM access door.
- ⓘ This screw is held in the hole in the door with a washer and will not come out of the hole, even after you unscrew it.

Step 3



- Insert the point of an opening pick in the seam near the top right corner of the RAM access door and gently pry the door up slightly.
- The door is held in place by small clips around its edges. Pry until you feel the nearest clips release.

Step 4



- Insert the wide edge of an opening pick into a new part of the seam between the door and the computer.
- Pry the door up to release the clips closest to the pick.
- Continue to slide the pick along the seam all the way around the door, prying as you go, until all the clips holding the door down have been released.

Step 5



- Remove the RAM access door.

Step 6 — Remove the optical drive



- Remove the 5.2 mm Phillips #00 screw securing the optical drive.

Step 7



- Insert an opening tool into the gap between the optical drive and the laptop.
- Pry the optical drive straight out of the laptop.
- Remove the optical drive.

Step 8 — Remove the case screws



- Use the point of a spudger to pry out eleven rubber plugs covering the screws on the bottom of the laptop.
- ⓘ Some plugs have a [hole](#) or [notch](#) into which you can insert the point of a spudger to more easily pry out the plugs.

Step 9



- Remove 18 Phillips #00 screws of the following lengths:
 - Eight 8.8 mm screws
 - Seven 5.2 mm screws
 - Three screws

Step 10 — Remove the battery cover



- Flip the laptop right-side up.
- Use an opening pick to pry the left and right edges of the battery cover away from the laptop enough that you can grip the cover with your fingers.

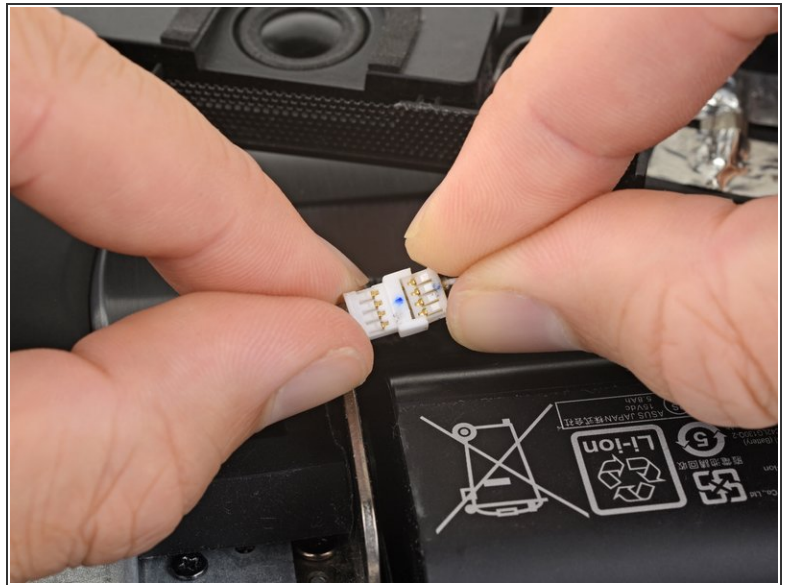
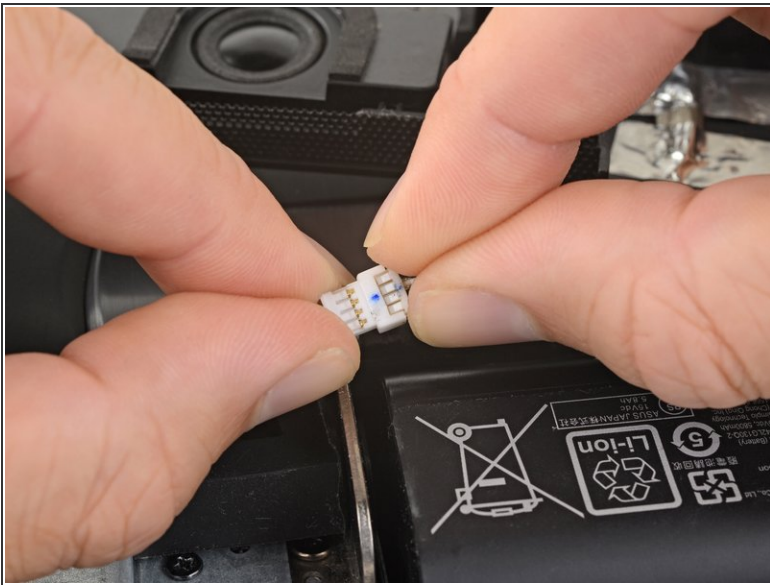
Step 11



- Lift the battery cover straight up from the laptop.

⚠ Do not try to completely remove the cover yet, it is still tethered by a speaker cable.

Step 12 — Disconnect the speaker cable



- Pull the speaker connectors straight away from each other to disconnect the speaker cable.

☑ Make sure the speaker cable is out of the way before you reinstall the battery cover.

Step 13 — Remove the upper case assembly



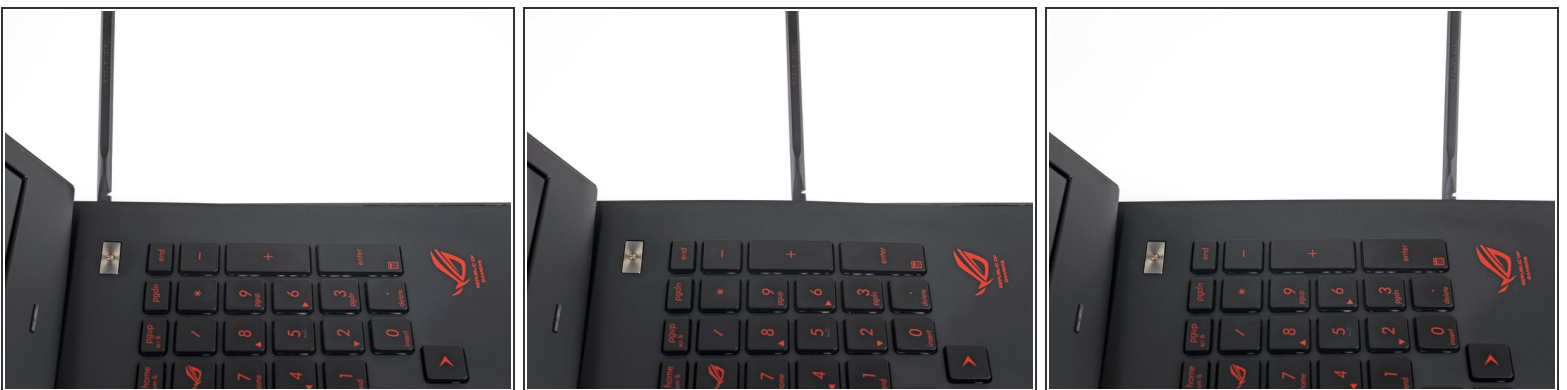
- Open the laptop's display to a 90° angle.
 - Use a spudger to pry against one of the screw tabs on the back of the upper case assembly.
⚠ Make sure to pry as close as possible to the base of the tab to avoid damaging the tab.
 - Repeat this procedure with the other tab.
- i** The upper case assembly is held in place by small clips around its edges. In this step, pry each tab up until you feel the nearest clips release.

Step 14



- Insert the flat end of a spudger in the gap between the laptop and the upper case assembly, near the display.
- If there's not a big enough gap, repeat the previous step until you have space to insert the spudger.

Step 15



- Slide the spudger along each edge of the upper case assembly, prying and releasing clips as you go.

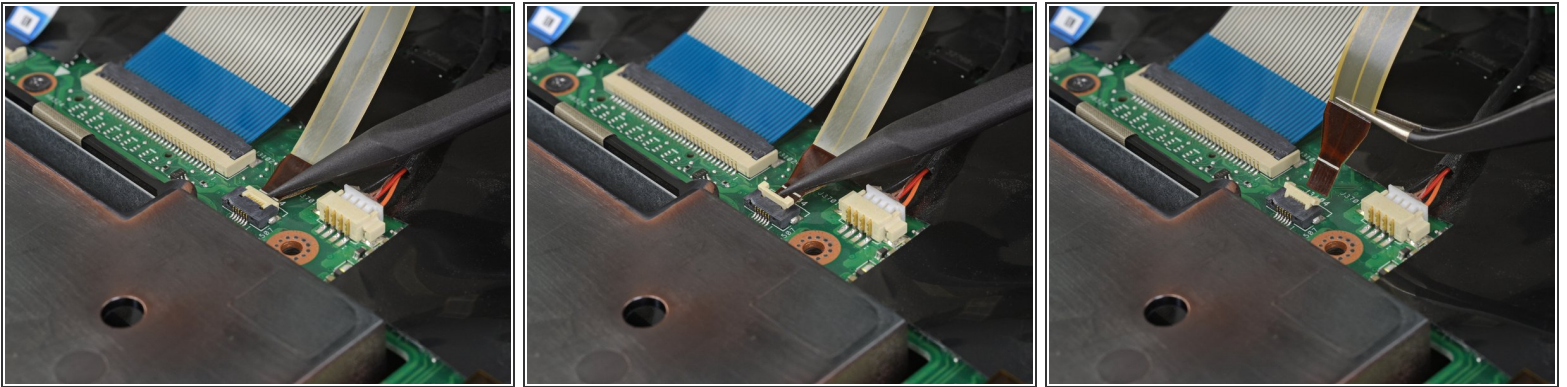
Step 16



- When all the clips securing the upper case assembly have been released, lift the assembly slightly and slide it down, away from the display, about an inch.

⚠ Do not attempt to remove the assembly yet. It is still attached to the laptop by four cables.

Step 17



- Use the tip of a spudger to flip up the small locking flap of the keyboard backlight cable [ZIF connector](#).

⚠ Be sure to pry up on the hinged flap, not the connector socket.

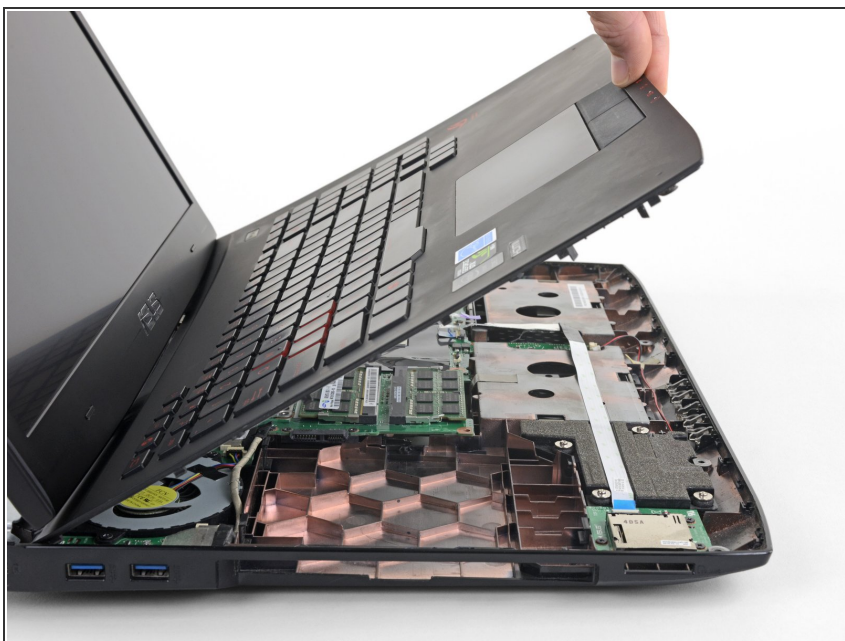
- Gently pull the cable out of its socket.

Step 18



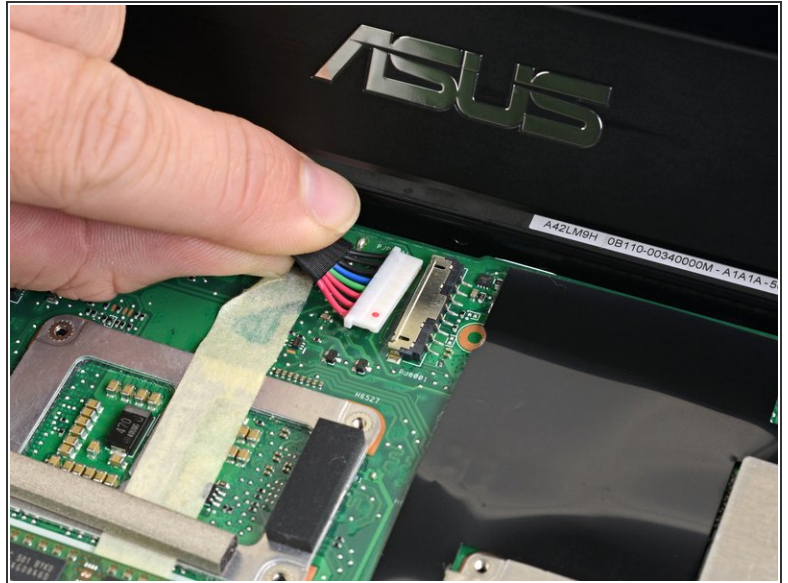
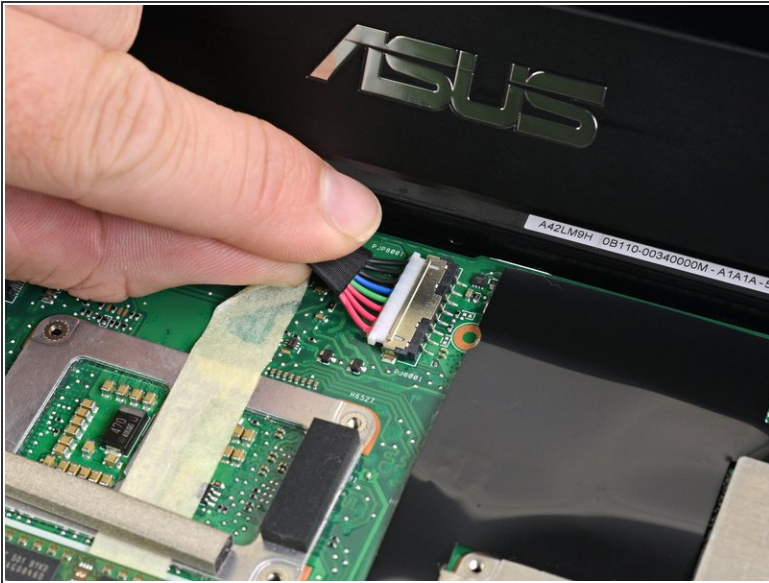
- Repeat the previous step for the keyboard, trackpad buttons, and trackpad cables held in place by ZIF connectors.

Step 19



- Remove the upper case assembly.

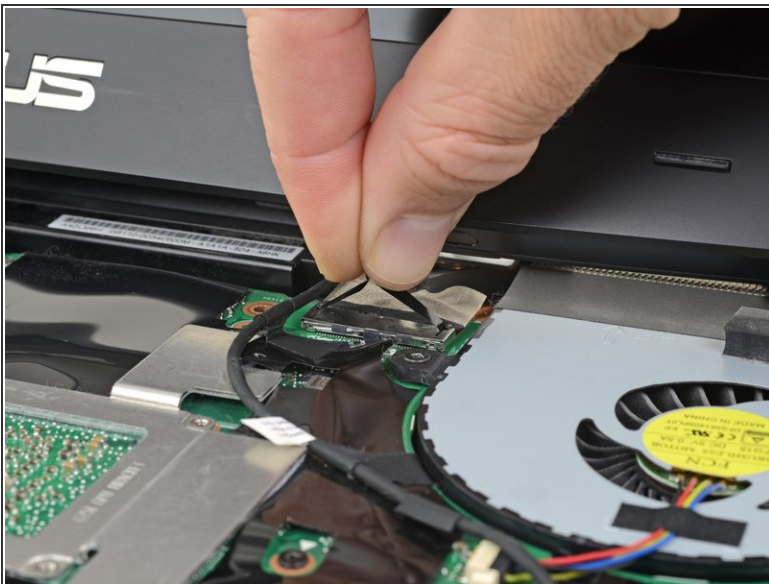
Step 20 — Disconnect the battery



- Pull the battery cable away from the connector in the same direction as the individual wires are running to disconnect the battery.

⚠ Pull evenly on the full width of the cable so that no individual wires are overly strained.

Step 21 — Remove the display



- Grab the black tape attached to the display cable and pull straight up to disconnect the display cable.

Step 22



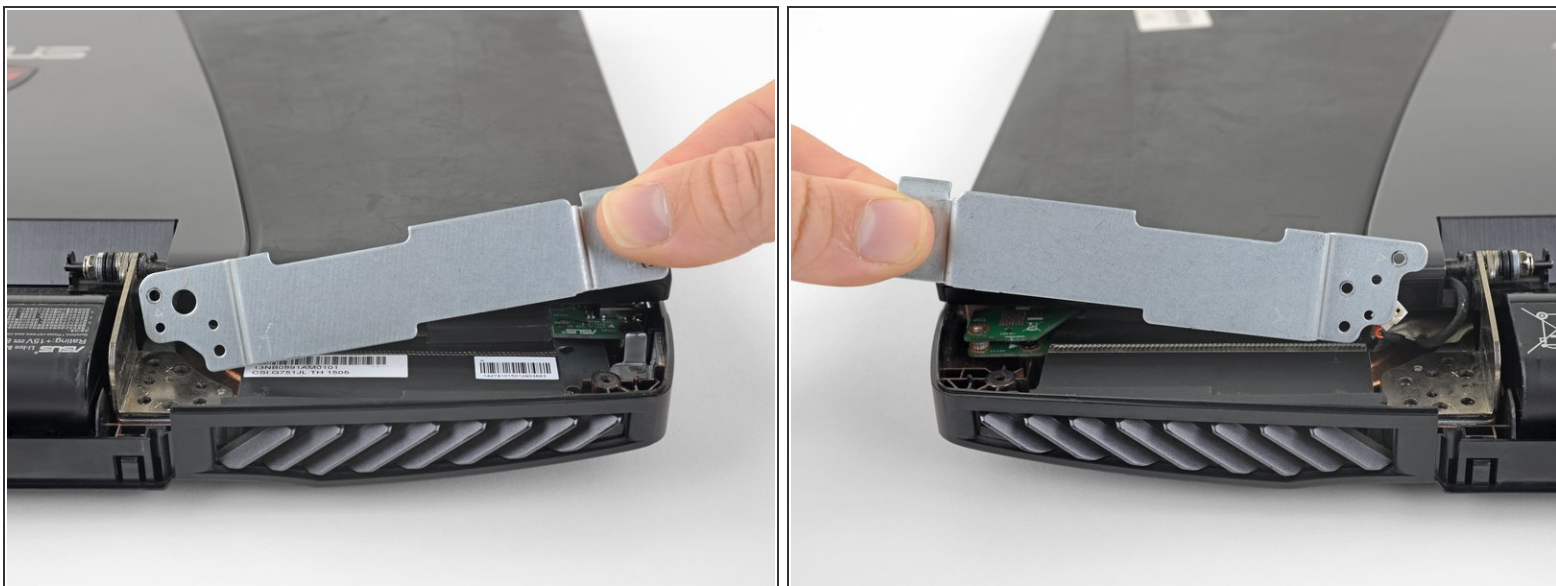
- Slide the point of a spudger under the black antenna cable until it's snug against the connector, and pry straight up from the board to disconnect the antenna cable.
- Follow the same procedure to disconnect the white antenna cable.
- ☑ To reinstall these antenna cables, hold the connectors in place and gently press them straight down. The connectors “snap” into their sockets much like the metal snaps on a jacket.
- ☑ Make sure to plug each cable into the correct socket during reassembly. The white cable should plug into the upper socket, while the black cable plugs into the lower.

Step 23



- Remove the nine Phillips screws securing the display:
 - Four 6.8 mm Phillips #0 screws
 - Three 8.6 mm Phillips #00 screws
 - Two 5.2 mm Phillips #00 screws

Step 24



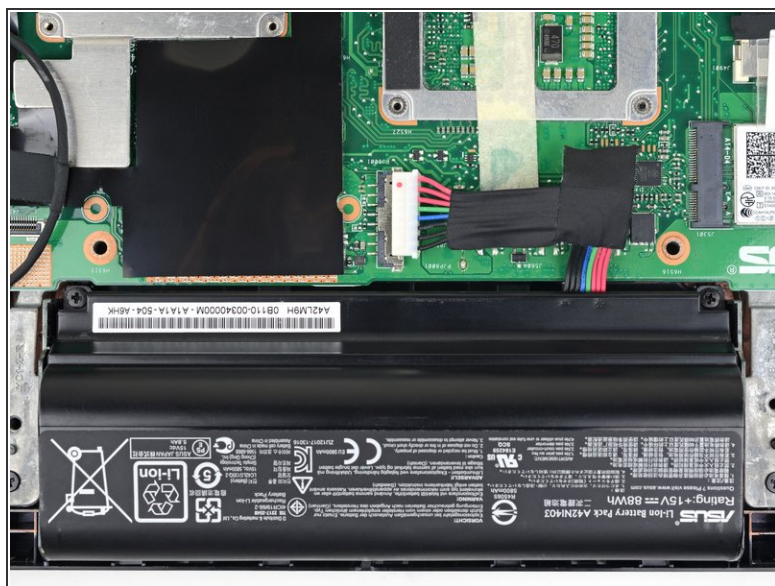
- Lift up and remove the two metal display brackets.

Step 25



- Lift the monitor straight up and remove it.

Step 26 — Remove the battery



- Remove the two 5.7 mm Phillips #00 screws securing the battery.

Step 27



- Lift the battery out of its compartment and remove it.
- ⓘ You may need to move the battery away from the motherboard to free the battery tabs.

To reassemble your device, follow the above steps in reverse order.

Take your e-waste to an [R2 or e-Stewards certified recycler](#).

Repair didn't go as planned? Check out our [Answers community](#) for troubleshooting help.