



# Black and Decker PS1800 Transmission Replacement

This guide will show how to replace the transmission of Black and Decker PS-1800.

Written By: David Nawl



---

## INTRODUCTION

This guide will show how to replace the transmission of Black and Decker PS-1800.



### TOOLS:

- [Phillips Screwdriver](#) (1)
-

## Step 1 — Open the Outer Drill Case



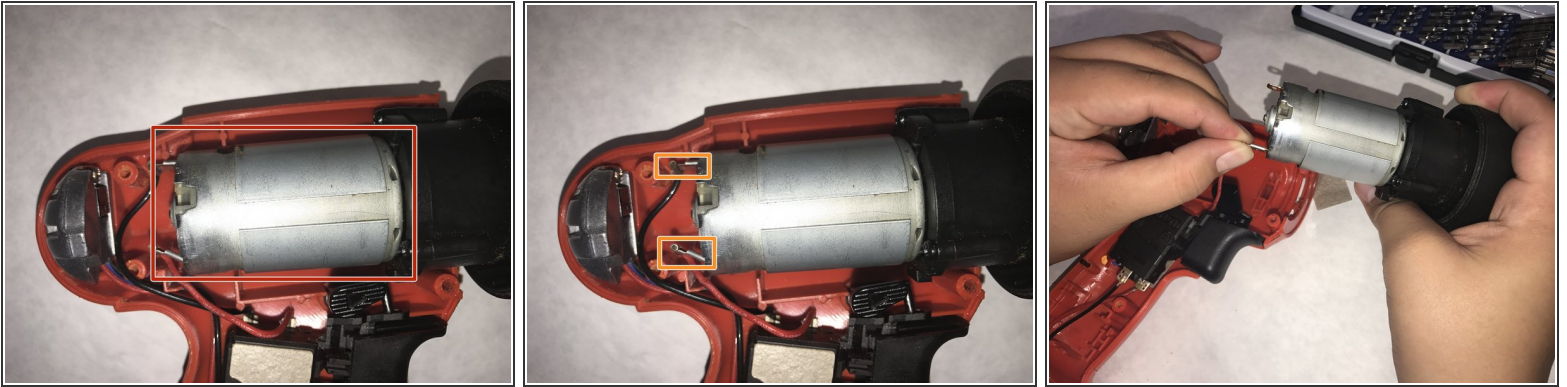
- Lay the drill on its side, assuring that the screw holes are facing upwards.
- Remove seven 12 mm screws using a Phillips #00 screwdriver.

## Step 2



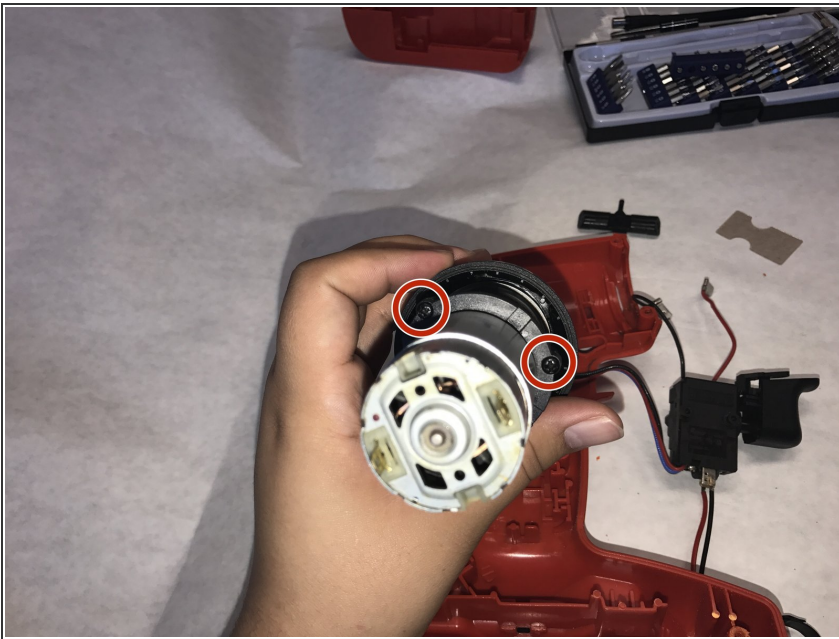
- Separate the outer drill case to expose the components and switch.

## Step 3 — Disconnect Motor



- Locate the motor at the top left hand corner.
- Carefully disconnect the red and black wires attached to the motor.

## Step 4



- Unscrew the motor from the drill's transmission.
- ⚠ Detach the transmission carefully, ensuring that the gears remain intact.

## Step 5



- Remove the motor from the transmission assembly, as pictured.

## Step 6 — Transmission



- Unscrew the torque adjuster from the transmission by removing the screws highlighted in the lefthand picture.

## Step 7



- Align the new transmission gears with the motor's gears.
- Reattach the transmission and motor by rescrewing the initial screws.

## Step 8



- Reconnect the torque adjuster to the transmission by following the procedure seen in step 6.

## Step 9



- Reconnect black and red wires onto the motor and place the motor, transmission and torque adjuster back onto their initial location.

## Step 10



- Reconnect the clamshell.
  - Press trigger to make sure the new transmission works.
- ⚠ Press and hold the clam-shell to assure it will not drop while testing.

To reassemble your device, follow these instructions in reverse order.