



Black and Decker PS1800 Motor Replacement

This guide will show you how to replace the motor on the Black and Decker PS1800.

Written By: Christian Aldrich



INTRODUCTION

This guide will show you how to replace the motor on the Black and Decker PS1800.



TOOLS:

- [Phillips Screwdriver](#) (1)
-

Step 1 — Open the Outer Drill Case



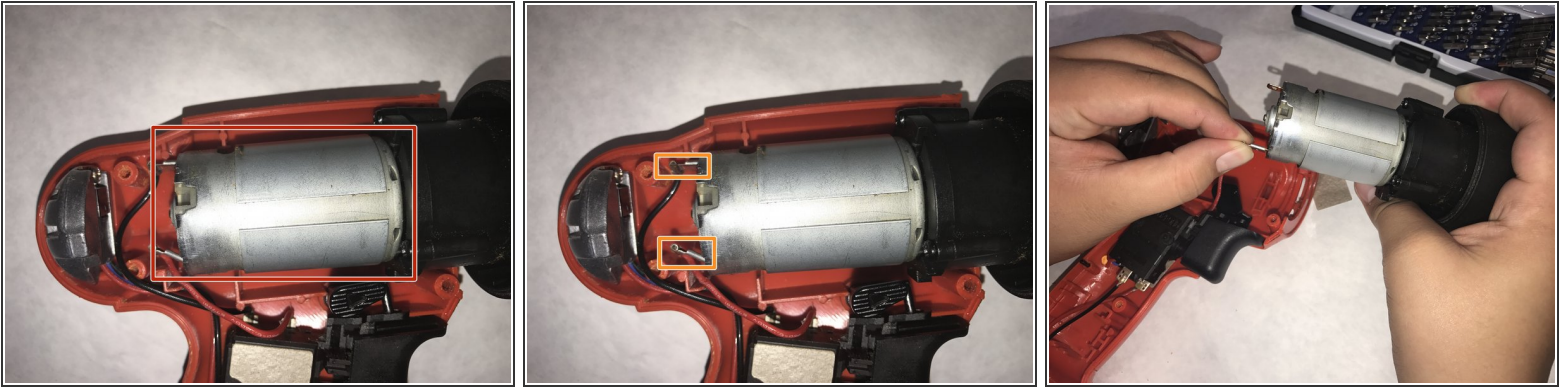
- Lay the drill on its side, assuring that the screw holes are facing upwards.
- Remove seven 12 mm screws using a Phillips #00 screwdriver.

Step 2



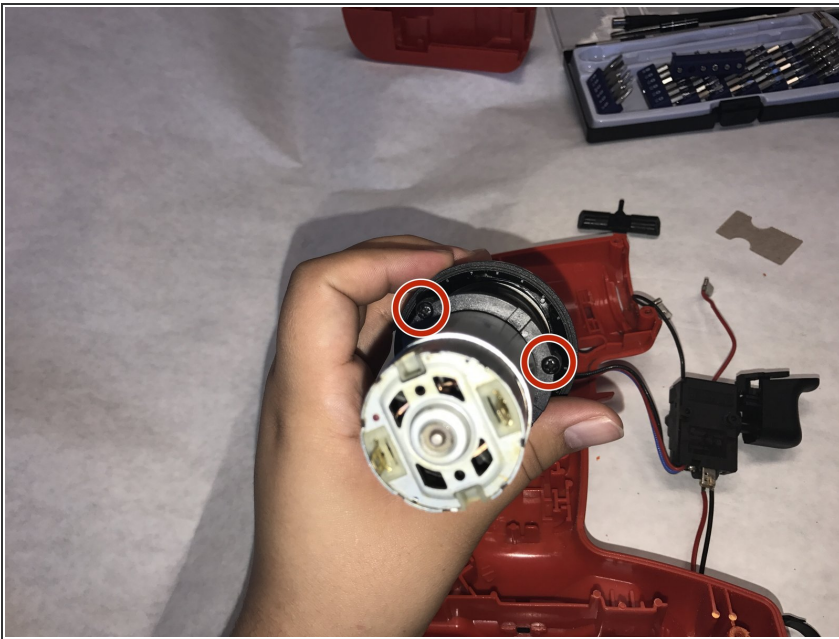
- Separate the outer drill case to expose the components and switch.

Step 3 — Disconnect Motor



- Locate the motor at the top left hand corner.
- Carefully disconnect the red and black wires attached to the motor.

Step 4



- Unscrew the motor from the drill's transmission.
- ⚠ Detach the transmission carefully, ensuring that the gears remain intact.

Step 5



- Remove the motor from the transmission assembly, as pictured.

To reassemble your device, follow these instructions in reverse order.