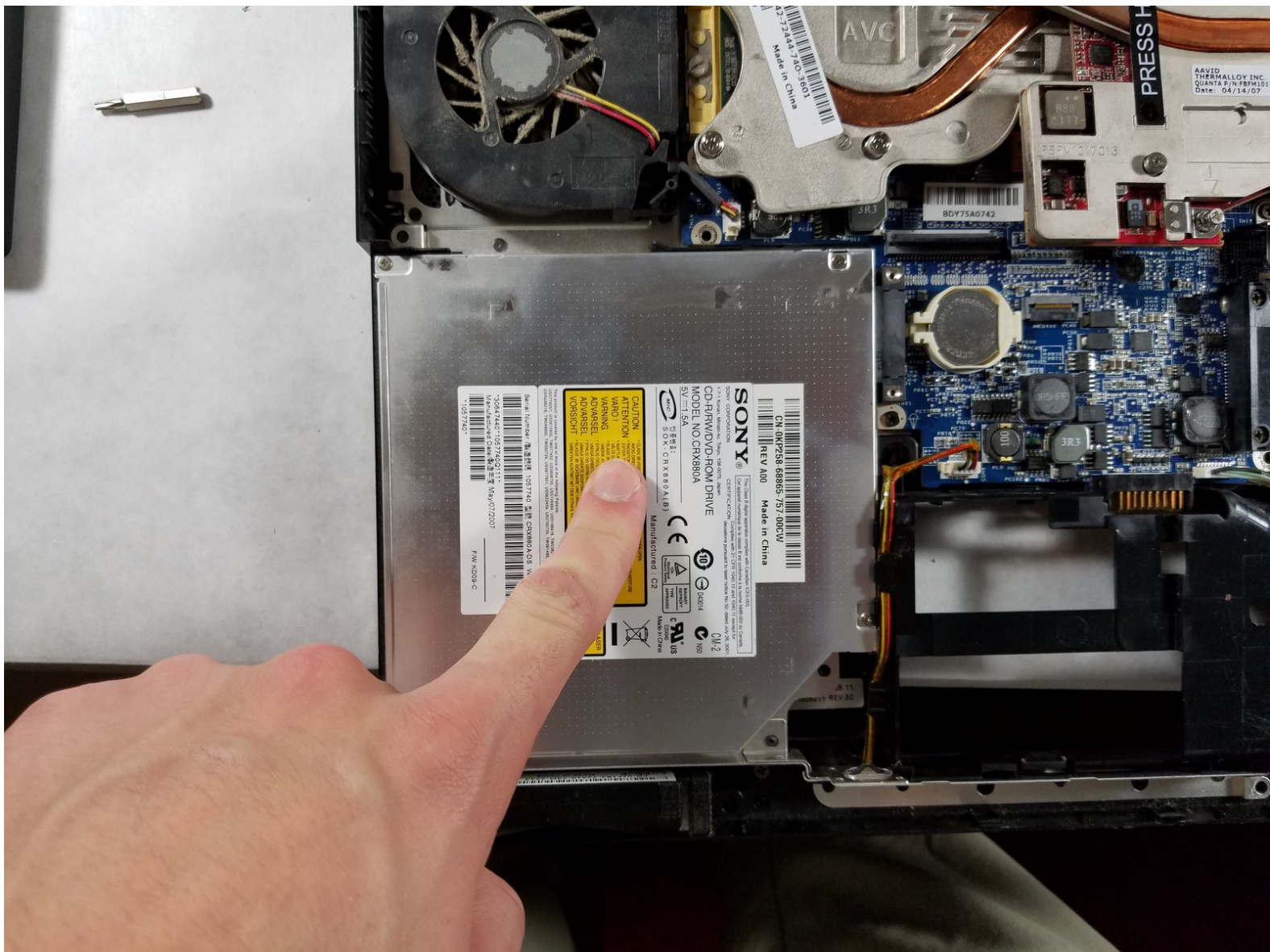




Dell Inspiron E1505 Optical Drive Replacement

Hard drives eventually fail and when it does this guide will show you how to replace one for the Dell Inspiron E1505.

Written By: Anthony Toscano





TOOLS:

- [Phillips #0 Screwdriver](#) (1)
 - [iFixit Opening Tool](#) (1)
-

Step 1 — Battery



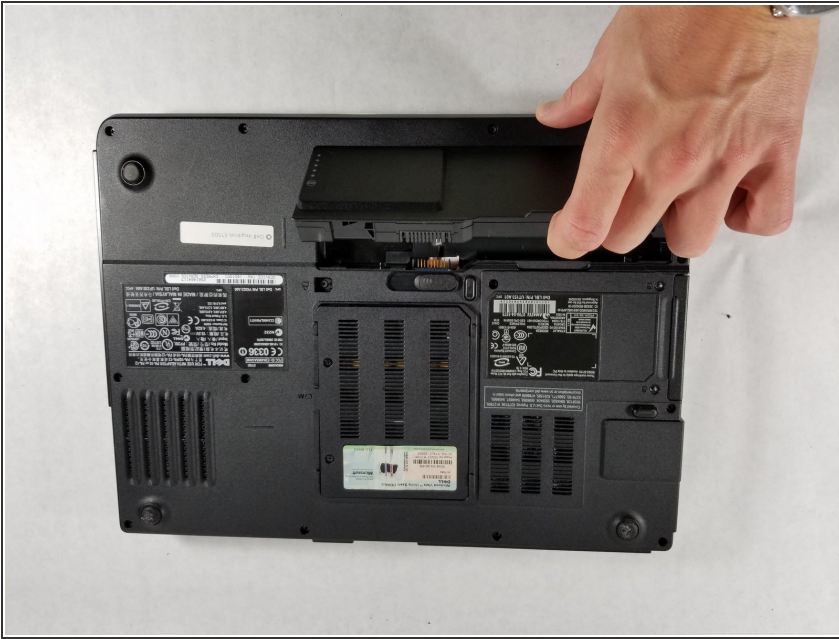
- Before any work can be done ensure that the laptop is powered off.
- Use either the power button on the computer or issue a shutdown from the operating system.
- Once the device is off place the laptop on a flat surface and flip it so that the bottom is facing upwards.

Step 2



- Locate the battery release switch on the bottom of the laptop.
- Once located slide the switch into the unlock position.

Step 3



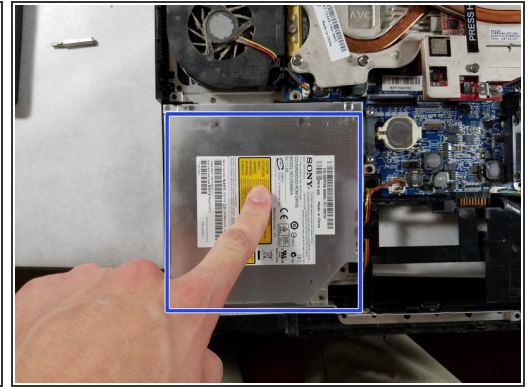
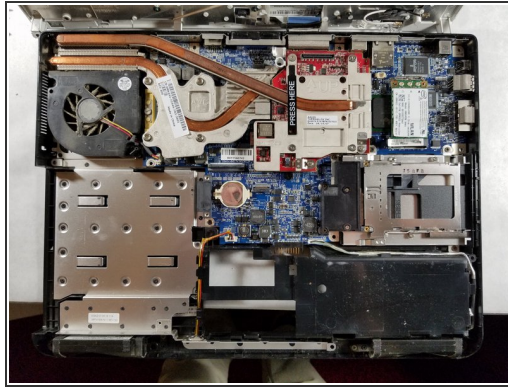
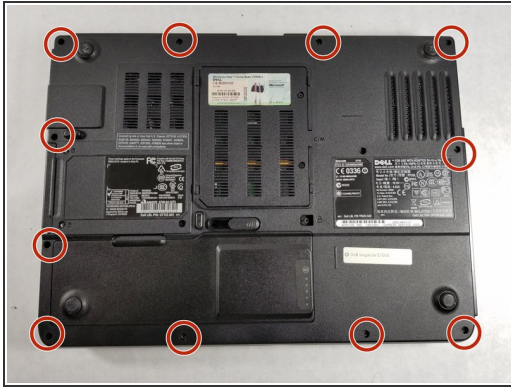
- Locate the “lip” on the laptop to lift the battery outside of the compartment.
- Once the battery is out, you will be able to find the replacement part number in order to purchase a new battery.

Step 4



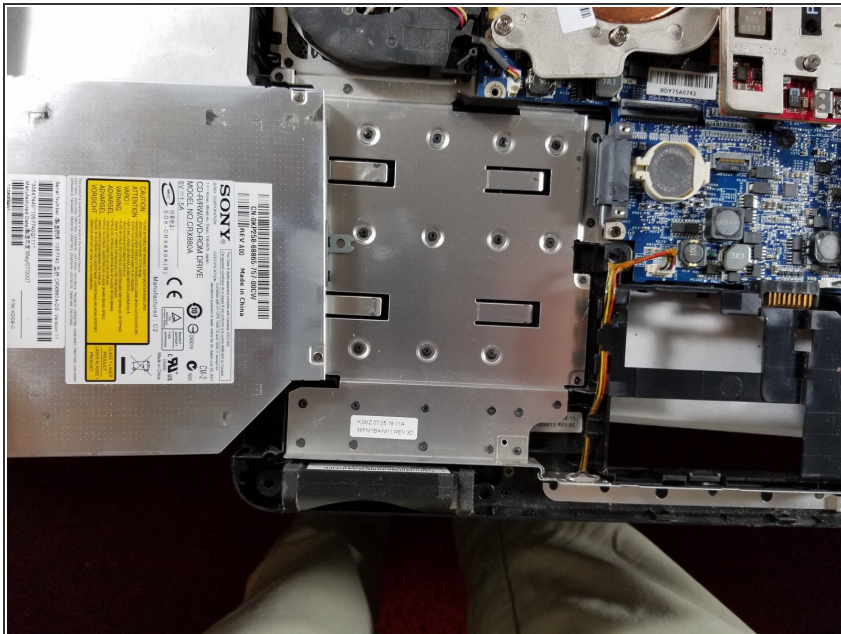
- Once the new battery has been acquired take the battery and place it in the empty battery slot.
- Slide the switch into the lock position to secure the new battery.

Step 5 — Optical Drive



- **Remove the back panel:** Use the screwdriver to remove the screws on the back panel.
- Lift the back panel off the laptop to expose the interior of the laptop.
- Locate the hard drive.

Step 6



- Remove the current optical drive.
- Look at the model number and order the replacement if needed.
- Insert the new optical drive in.

To reassemble your device, follow these instructions in reverse order.