



HP Pavilion 14-b120dx Audio Port/USB Drive Replacement

This guide will walk you through replacing the...

Written By: Erin Lavalla



INTRODUCTION

This guide will walk you through replacing the audio port and USB drive card using an iFixit PH0 screwdriver and plastic opening tool.


TOOLS:

Phillips #0 Screwdriver (1)

iFixit Opening Tool (1)

Step 1 — Battery



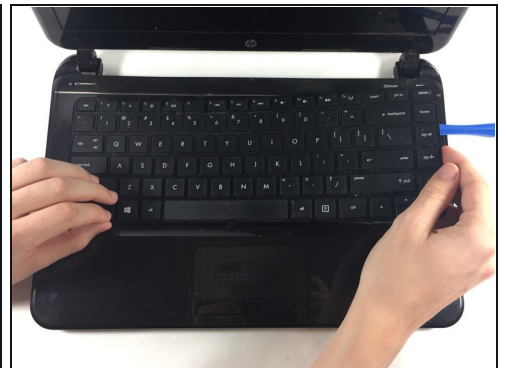
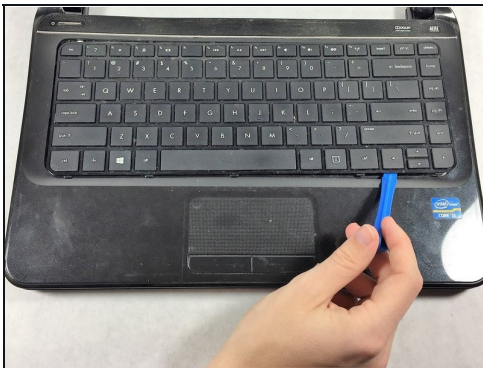
 Power down the laptop and detach the charging cord (failure to do so can result in electrical shock).

Step 2



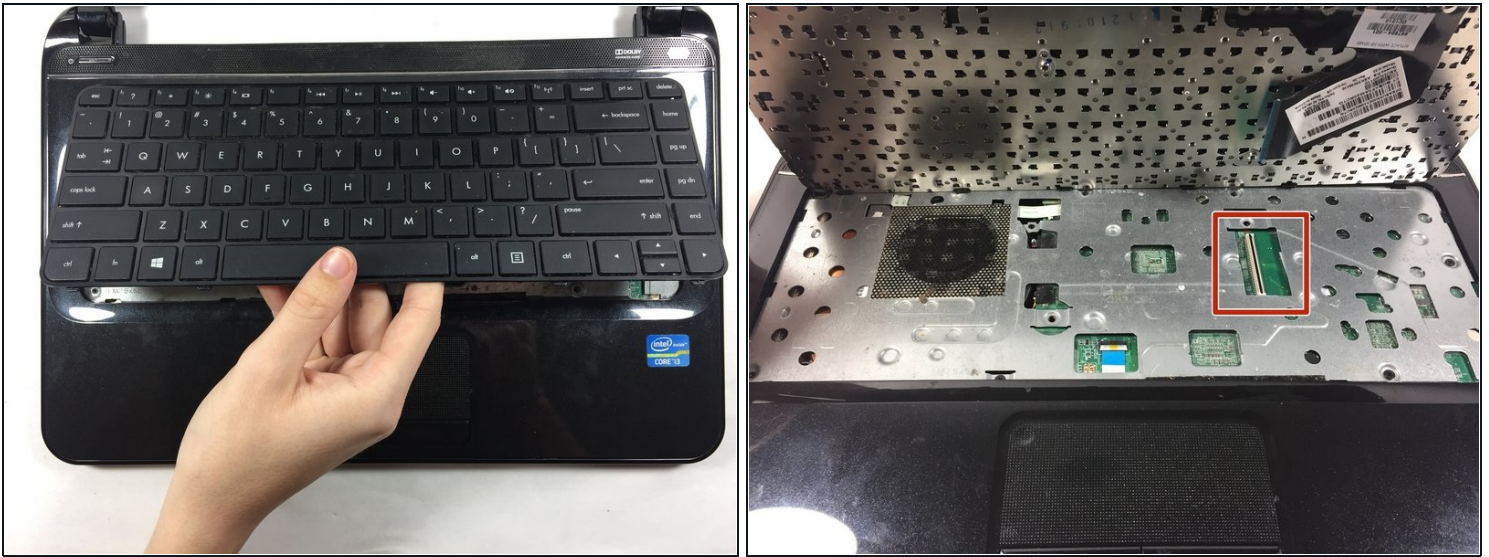
- Flip the laptop upside down so that the bottom is facing you.
- Push the slide on the right toward the center of the laptop, releasing the battery latch.
- Lift the battery up and away from the laptop.

Step 3 — Keyboard



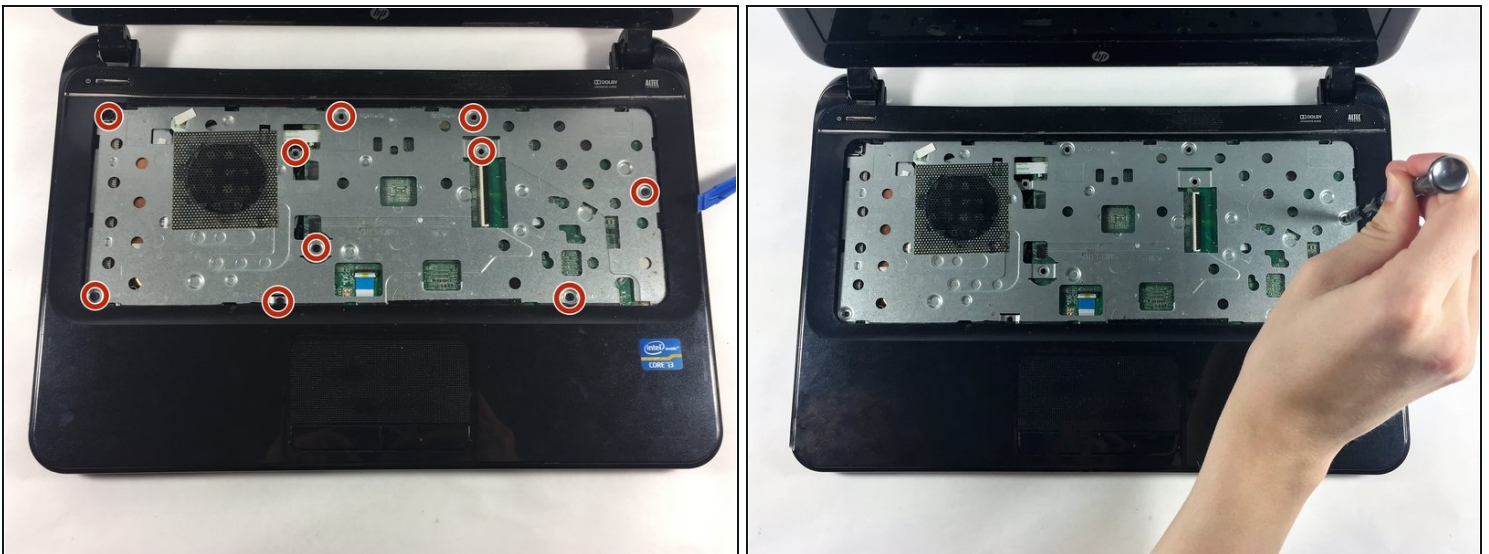
- Insert the plastic opening tool between the keyboard and the palm rest.
 - Pry upwards until the keyboard section detaches from the laptop.
 - Repeat this around the edge of the entire keyboard.
- ⓘ Sections will make loud snapping noises as they detach from the palm rest - this is normal.

Step 4



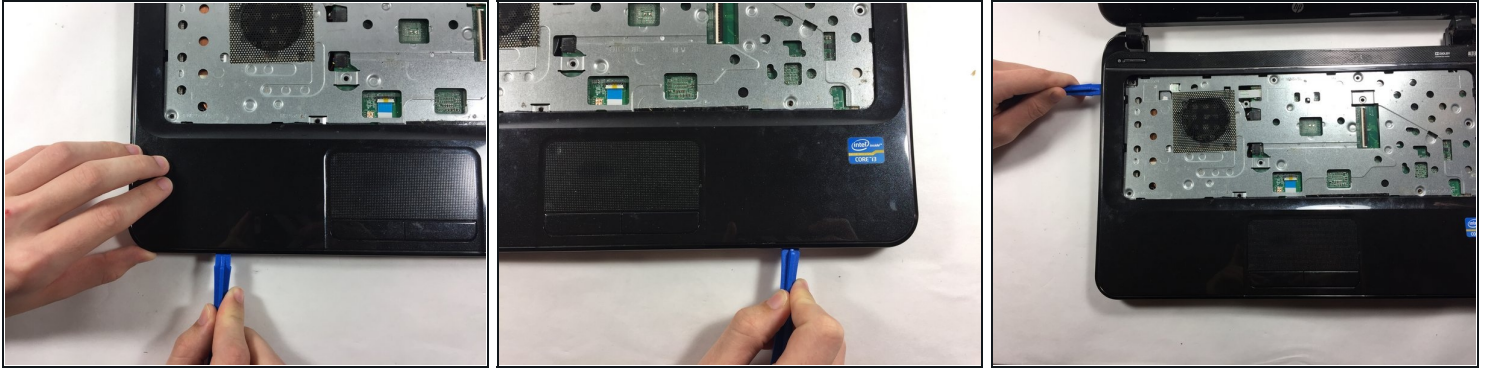
- Lift the keyboard slowly up until the connecting cable is exposed.
- Carefully lift the flap on the ZIF connector using a fingernail or plastic opening tool. This will release the cable.
- Detach the cable.

Step 5 — Palm Rest



- Unscrew the 10 6.0 mm screws under the keyboard housing with a Philips #0 head screwdriver.

Step 6



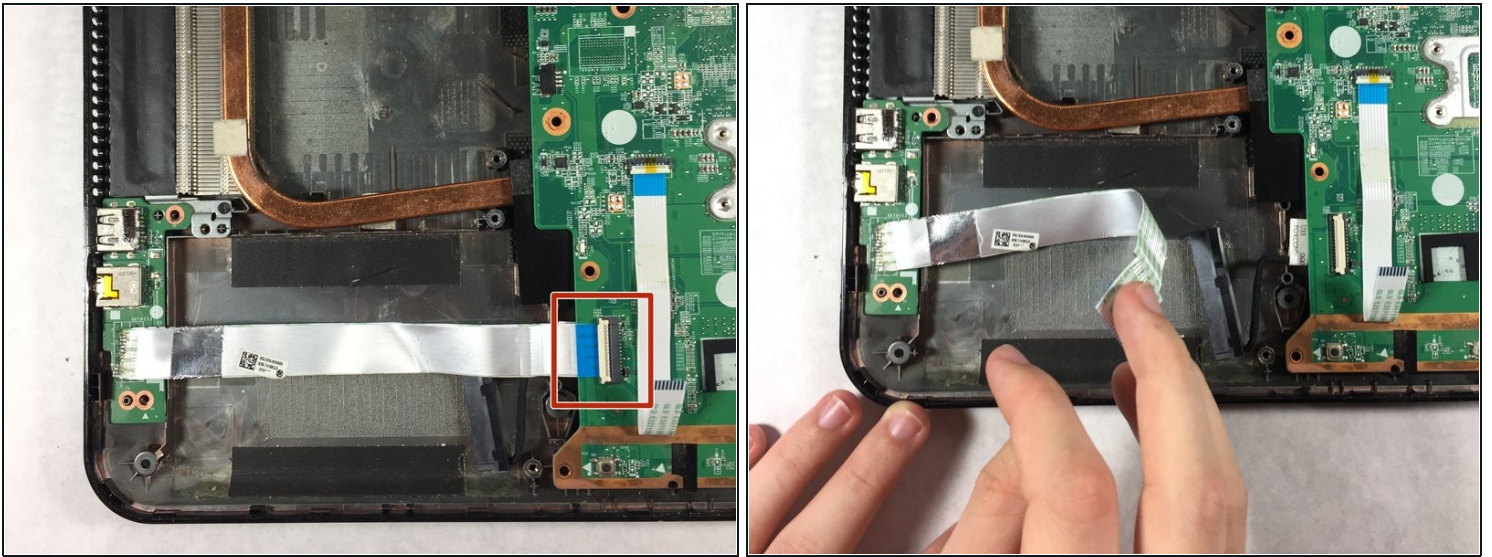
- Insert the plastic opening tool into the seam between the palm rest and the laptop.
 - Pry upwards until the palm rest separates from the laptop.
 - Repeat this process around the entire computer.
- ⓘ These steps will be similar to the ones you took to remove the keyboard. Again, you will hear snapping noises.

Step 7



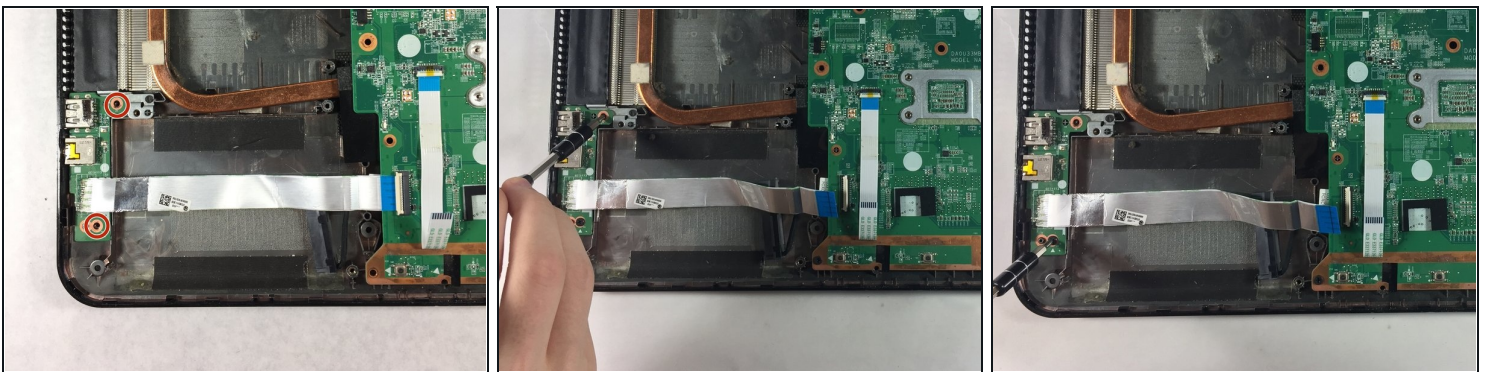
- Lift upwards to remove the palm rest.

Step 8 — Audio Port and USB drive



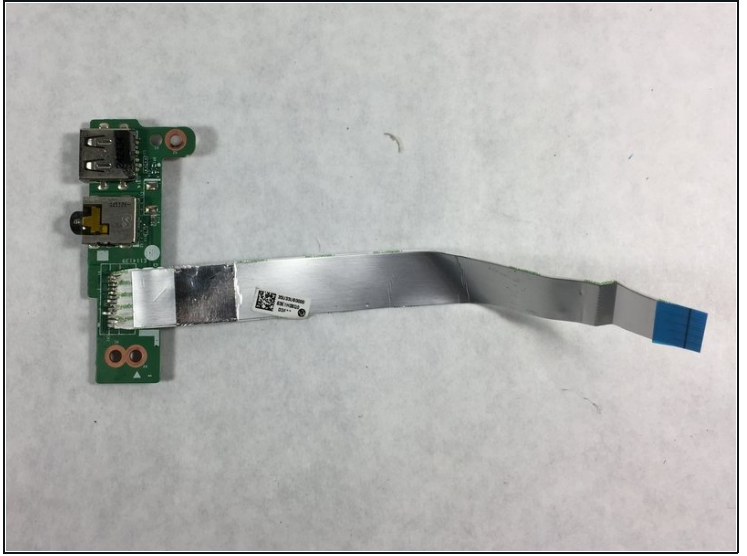
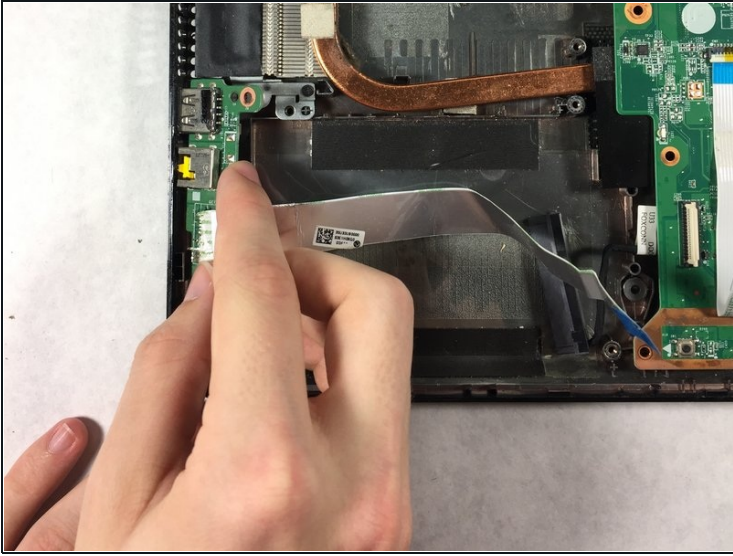
- Carefully disconnect the cable connecting the ports to the motherboard from the right side.

Step 9



- Remove the two 6.0 mm screws from the ports.

Step 10



- Push the ports to the left and lift upward to remove them safely.

To reassemble your device, follow these instructions in reverse order.