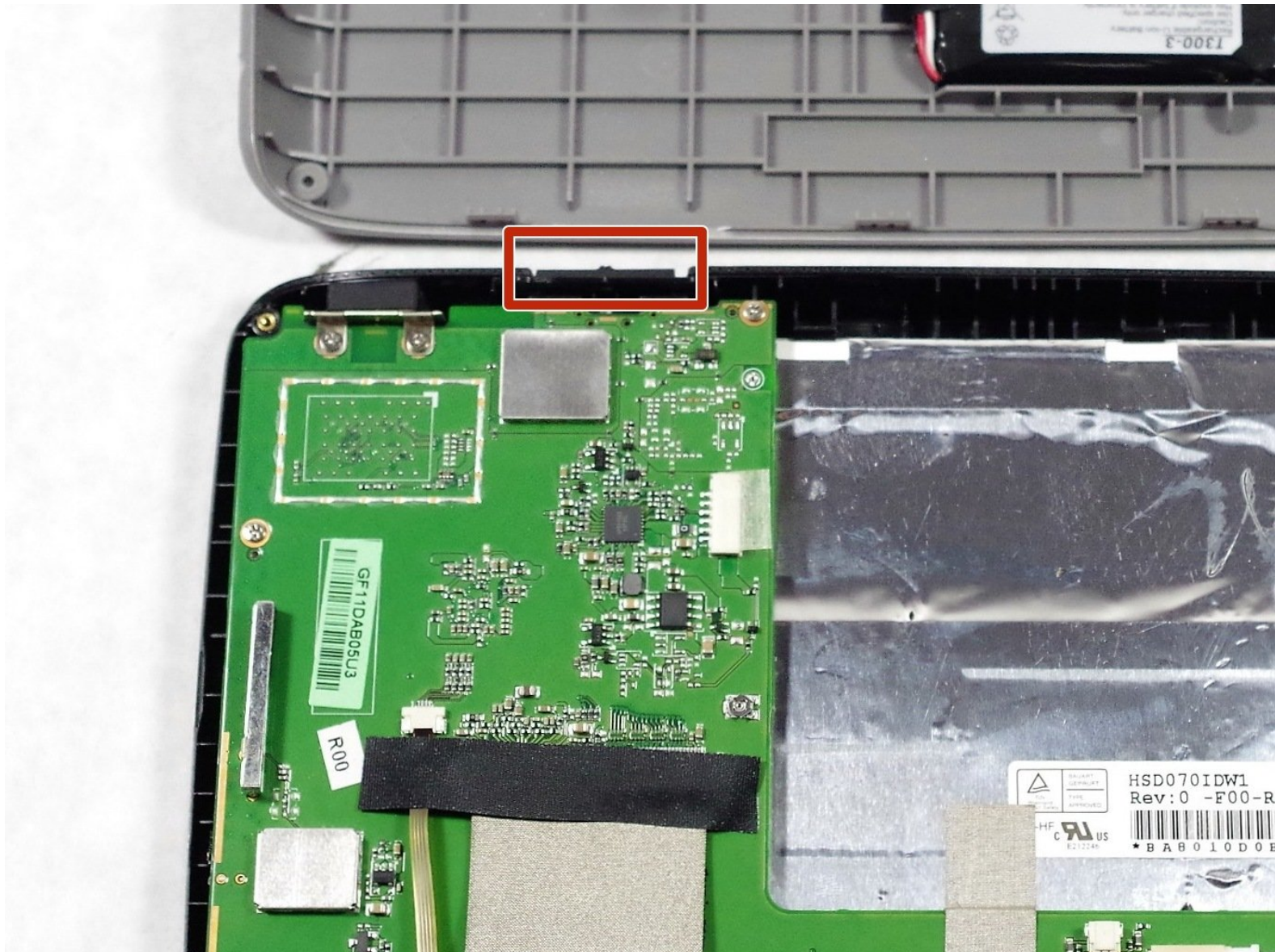




Magellan Roadmate 9055-LM Power Button Replacement

This guide shows you how to replace the Power Button

Written By: Giovanni






TOOLS:

- [iFixit Opening Tools](#) (1)
 - [Phillips #0 Screwdriver](#) (1)
-

Step 1 — Magellan Roadmate 9055-LM Back Panel Disassembly



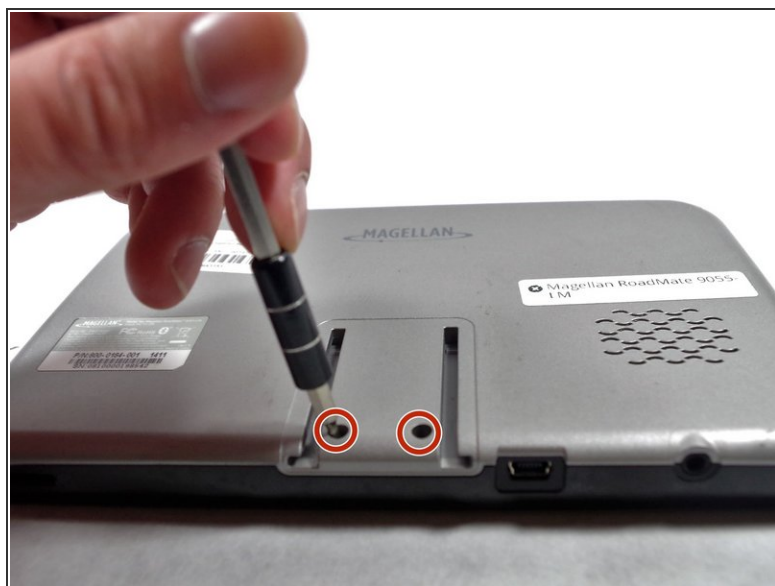
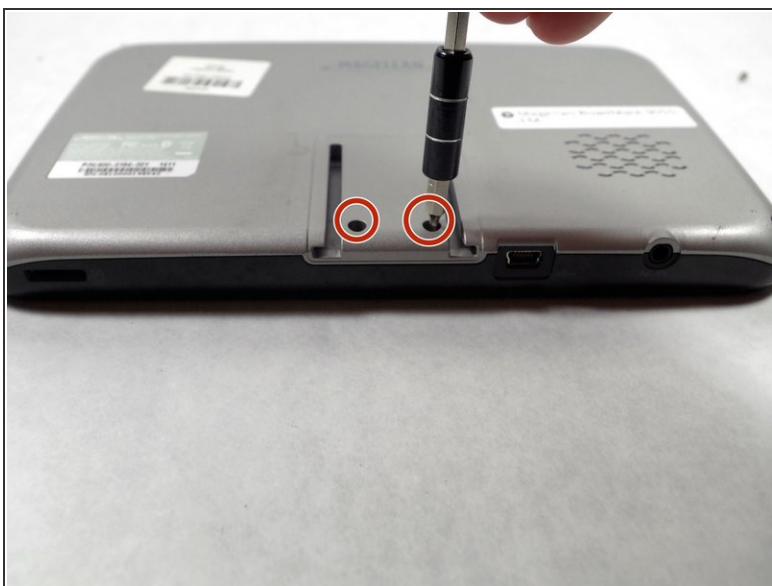
 Flip your device with back panel facing up.

Step 2



- Unscrew four Phillips #0 screws from the back panel.

Step 3



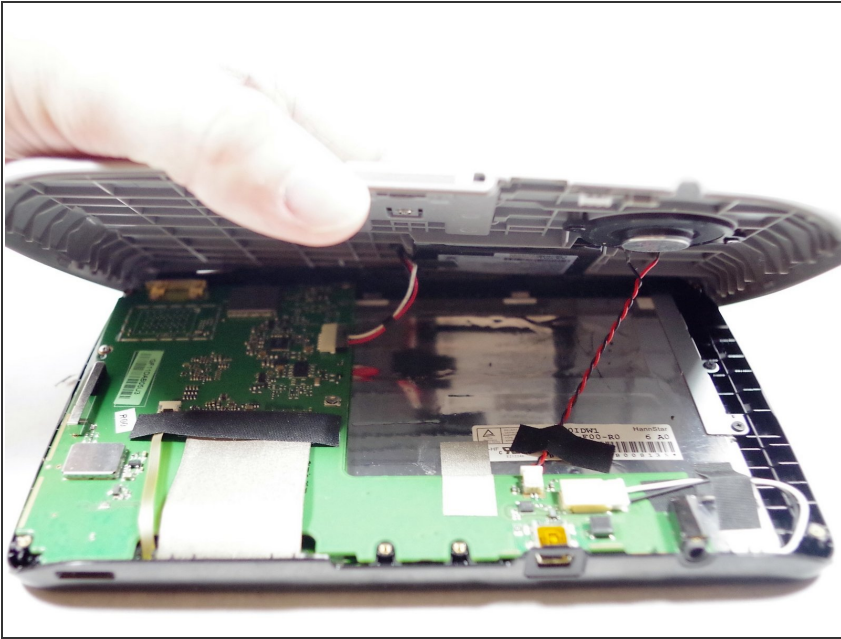
- Unscrew two Phillips #0 screws from the back panel.

Step 4



- Use a plastic opening tool to pop the right side of the panel.

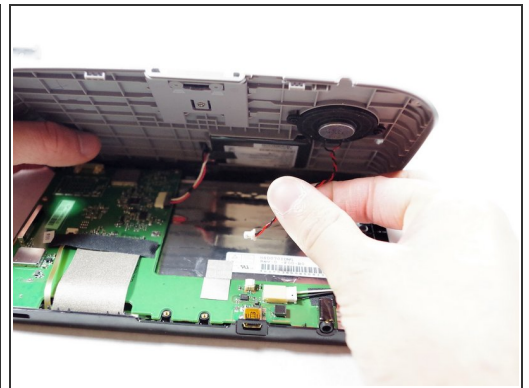
Step 5



⚠️ Lifting the back panel too quickly or forcefully may damage the speaker cable and battery cable, which are still attached underneath.

- Gently lift up the back panel.

Step 6




- Remove the tape.
- Unplug the cable for the speaker.

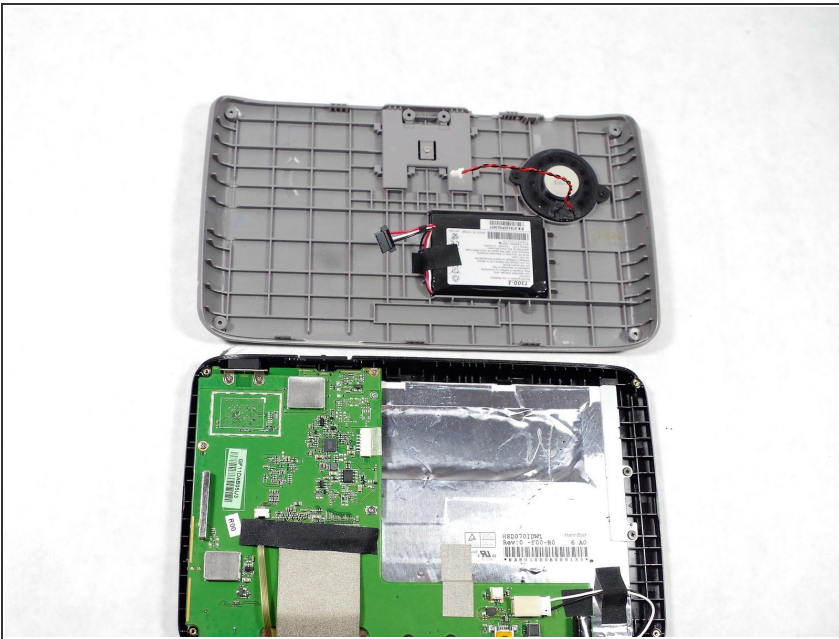
Step 7



- Remove the cable of the battery.

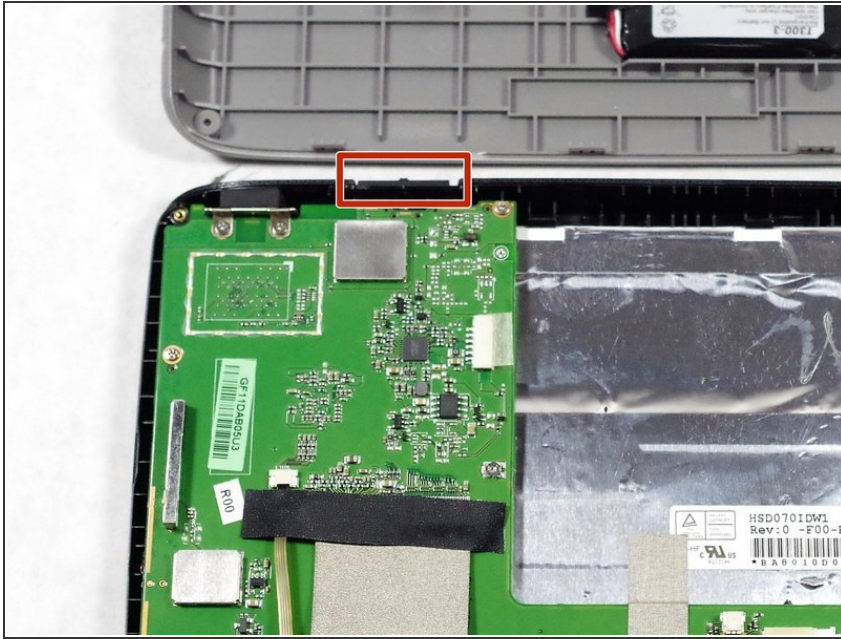
 Tape removal is not necessary.

Step 8



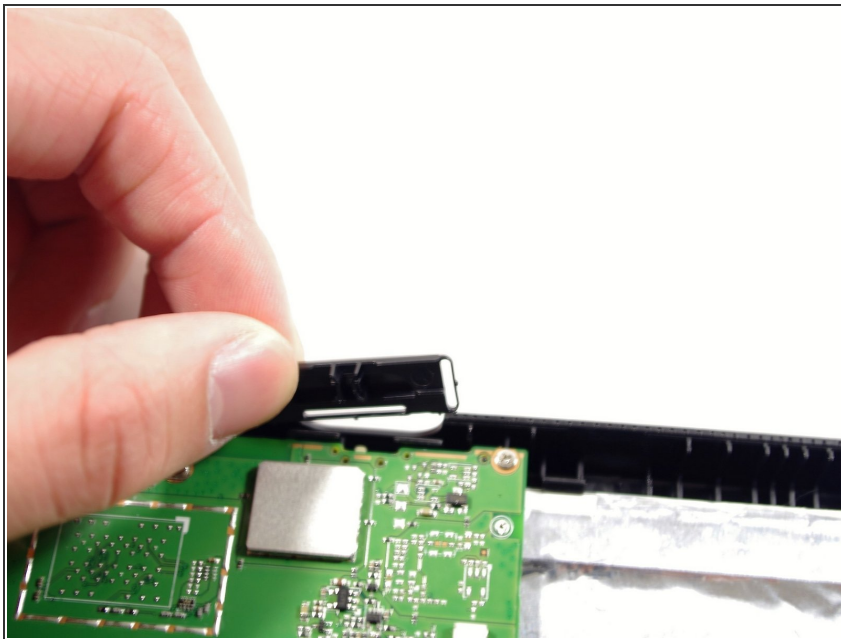
- Place the back panel gently on the table.

Step 9 — Power Button



- After the back panel is placed on the table, you must need to locate the starting button.

Step 10



- It is easily removable and can now be replaced.

To reassemble your device, follow these instructions in reverse order.