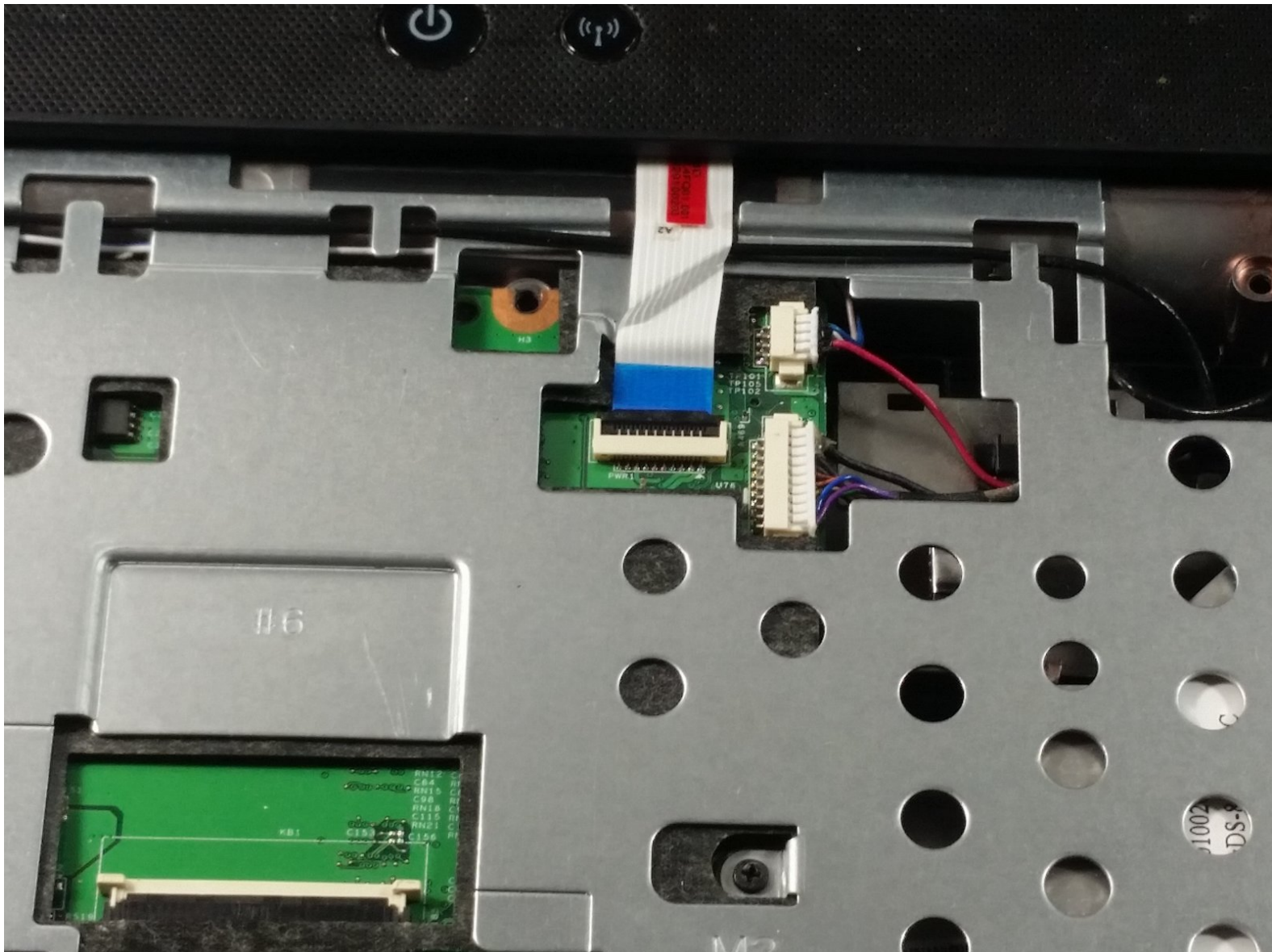




HP G60T-600 CTO Power Button Frame Replacement

This simple guide will show you how to remove and replace the frame that contains the power button for this device.

Written By: Dominic DeSantis



INTRODUCTION

The guide will show you step by step how to replace the power button for this device.




TOOLS:

- [Phillips #0 Screwdriver](#) (1)
 - [iFixit Opening Tools](#) (1)
-

Step 1 — Battery



 Failure to remove the battery before performing any replacement guide may result in electric shock.

- Close your device, then turn it over.

Step 2



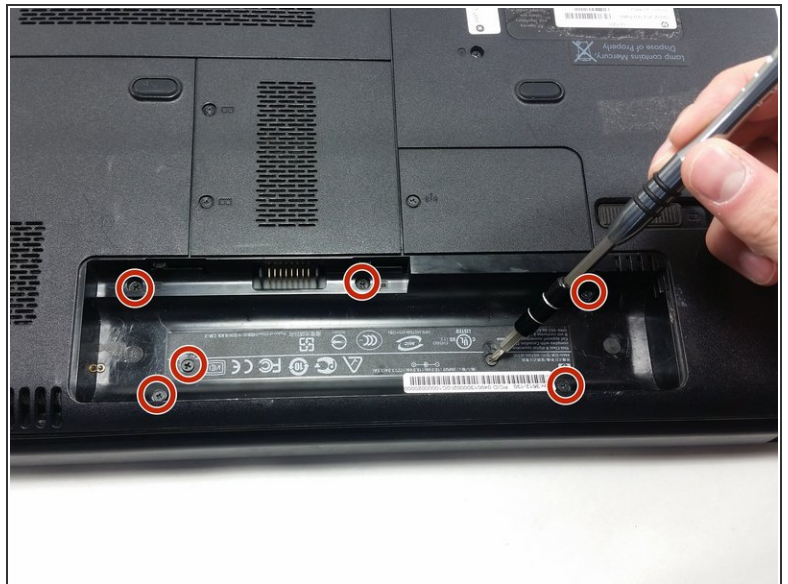
- Place your index finger on the ridged tab.

Step 3



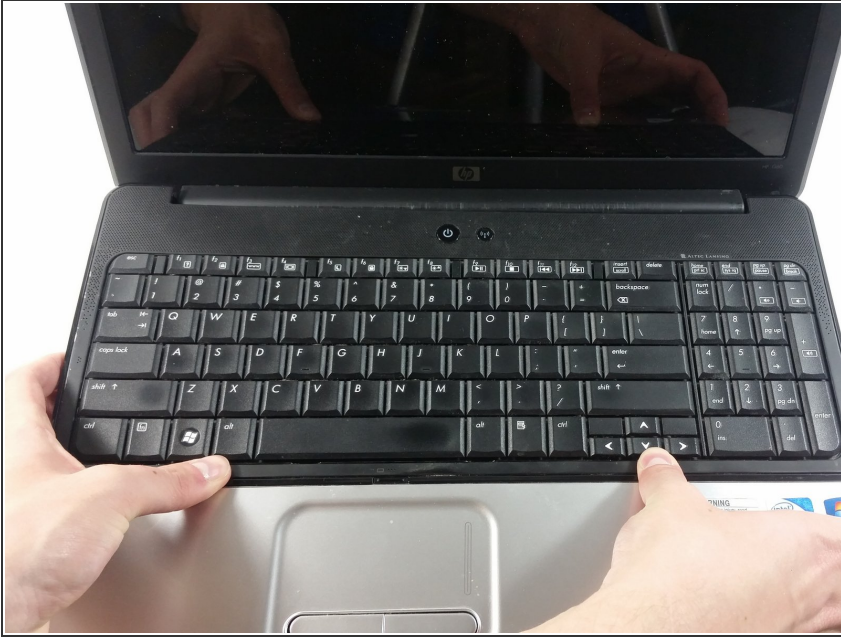
- Apply moderate pressure to the tab and slide it to the right.
- While the tab is on the right, you should be able to gently slide your battery out of your device.

Step 4 — Keyboard



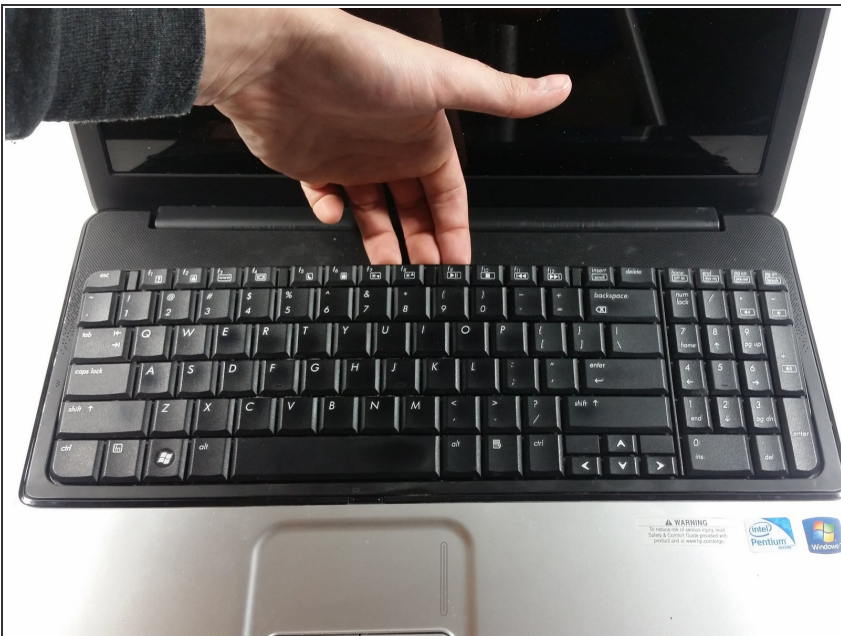
- Unscrew the following 5mm screws with a #0 Phillips screwdriver.

Step 5



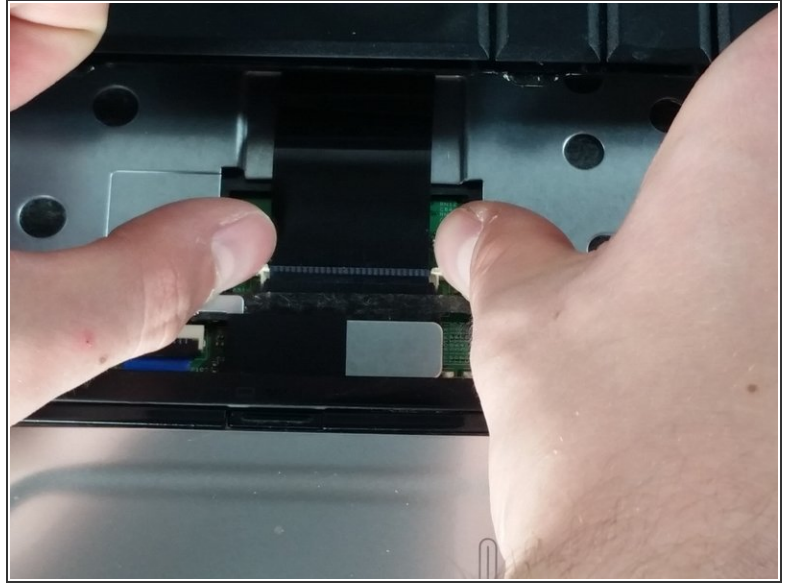
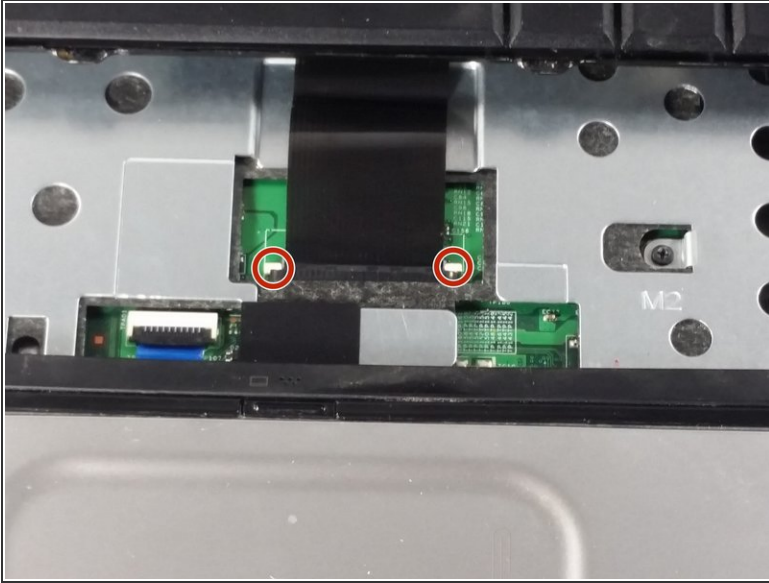
- Turn your laptop over and open it up.
- Grip your laptop firmly from both sides and use your thumbs to slide the keyboard towards the screen.

Step 6



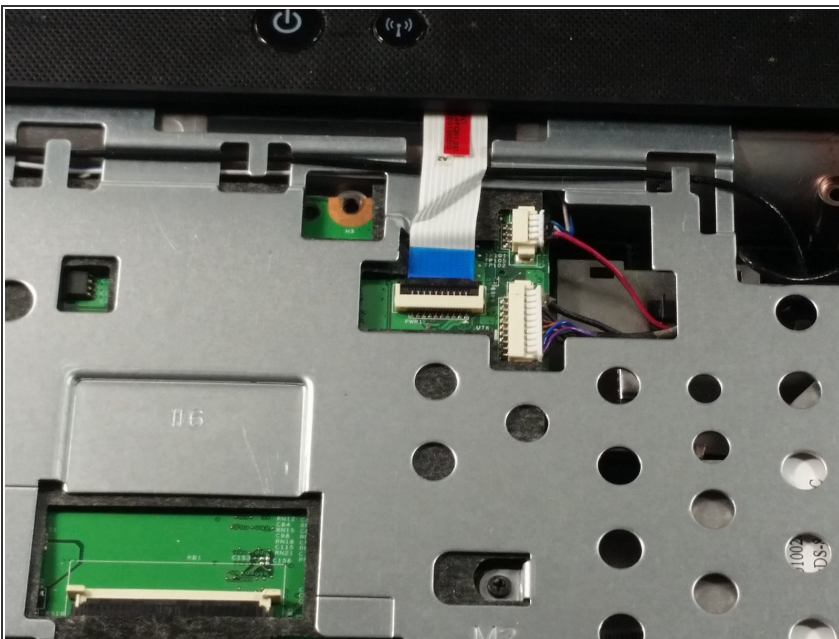
- Pull up on the top of your keyboard with medium force. It should start to pop out.
- ⓘ A plastic opening tool may facilitate this task.
- Run your hands underneath the edges of the keyboard until it is free from the device.
- ⚠ Do not pull hard to take the keyboard out. There is a small connection that needs to be undone.

Step 7



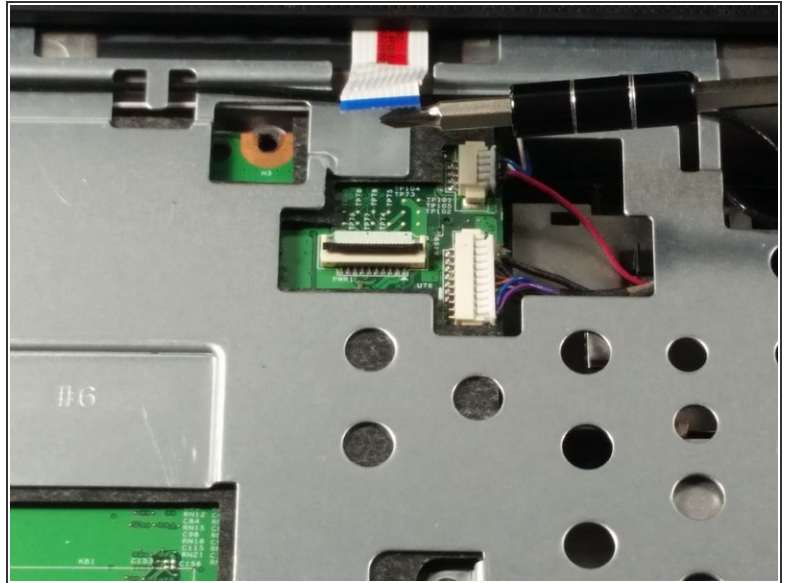
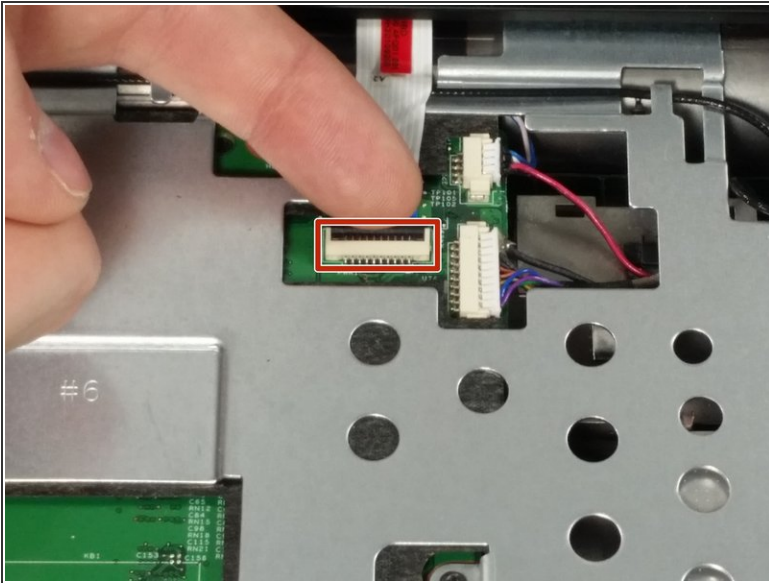
- Place your thumbs on the two small, white tabs.
- Push these tabs forward to release the connection and free the keyboard from the device.

Step 8 — Power Button Frame



- Similarly to how you remove the keyboard, gently pry a small section of the power button frame up.

Step 9



- Gently pull the white tab upwards.
- With similar force, pull the connection out.
- You are now free to pull the power button frame off of your device.

Step 10



- Unscrew the 5mm screw holding the CD player in place.

To reassemble your device, follow these instructions in reverse order.