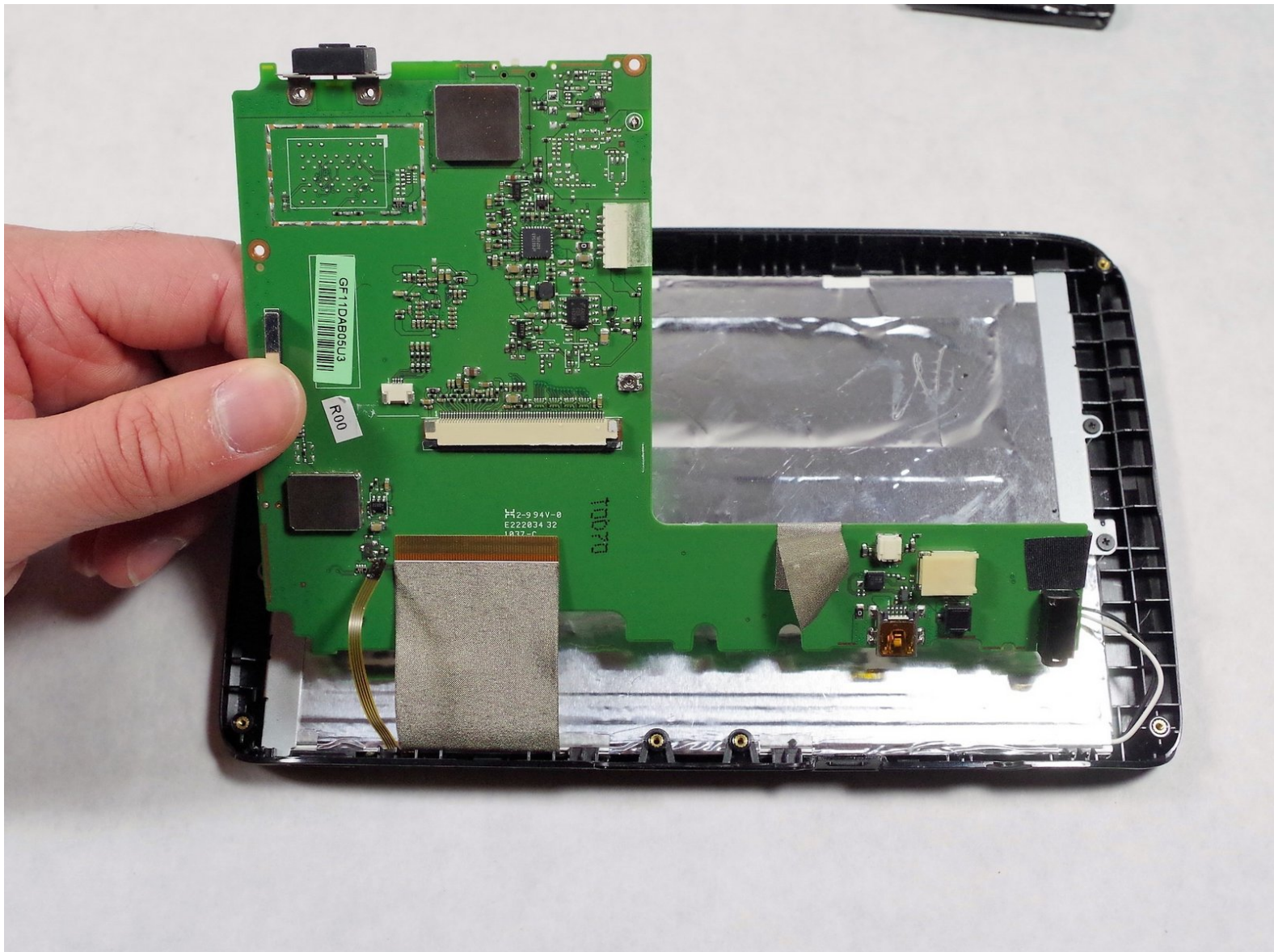




Magellan Roadmate 9055-LM Motherboard Replacement

This guide will help you safely replace the Mother Board of The Magallen Roadmate 9055-LM.

Written By: Umar siddique



INTRODUCTION

You can change the motherboard of the device by following this guide. When disconnecting the mother board , try to unplug all the wires carefully. Using more force can damaged the wires clips or wires it self.



TOOLS:

- [iFixit Opening Tools](#) (1)
 - [Phillips #0 Screwdriver](#) (1)
-

Step 1 — Magellan Roadmate 9055-LM Back Panel Disassembly



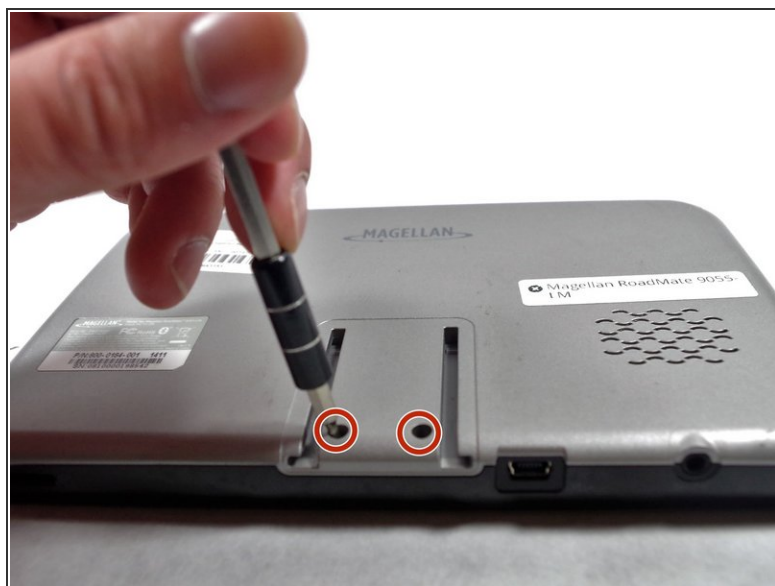
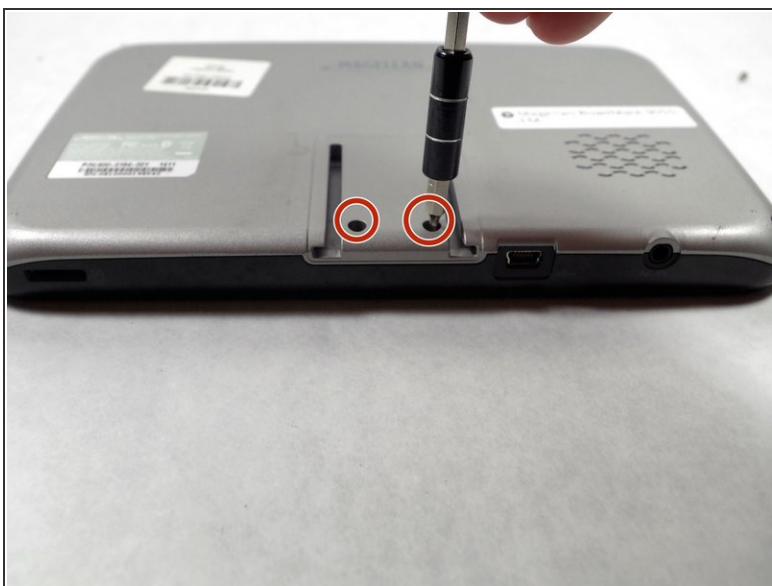
⚠ Flip your device with back panel facing up.

Step 2



- Unscrew four Phillips #0 screws from the back panel.

Step 3



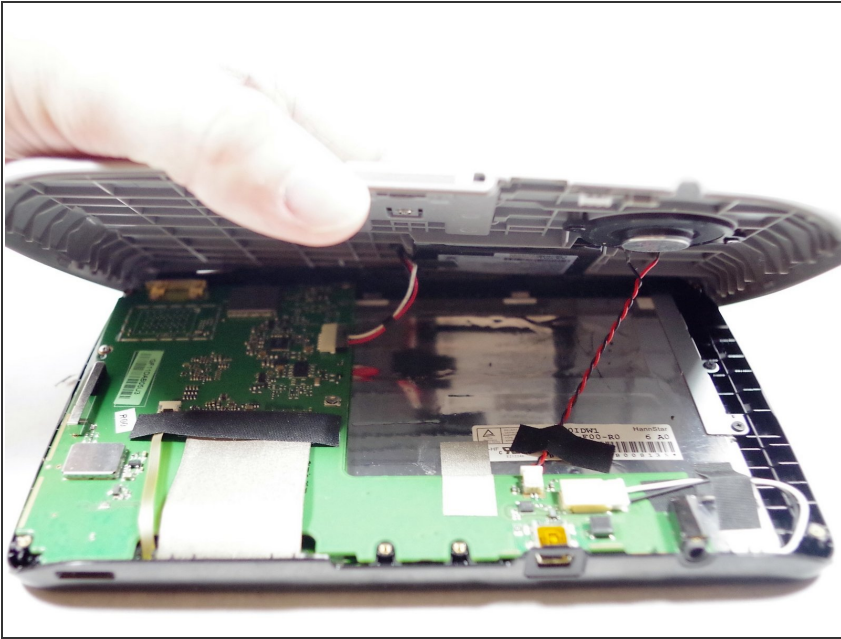
- Unscrew two Phillips #0 screws from the back panel.

Step 4



- Use a plastic opening tool to pop the right side of the panel.

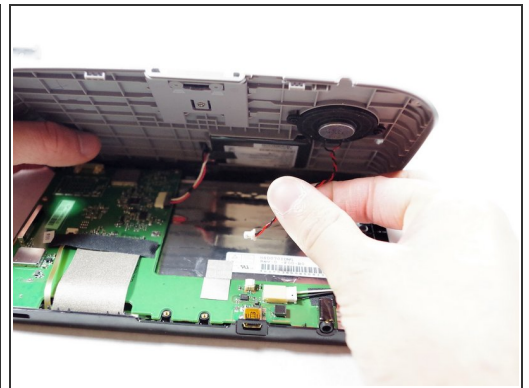
Step 5



⚠️ Lifting the back panel too quickly or forcefully may damage the speaker cable and battery cable, which are still attached underneath.

- Gently lift up the back panel.

Step 6




- Remove the tape.
- Unplug the cable for the speaker.

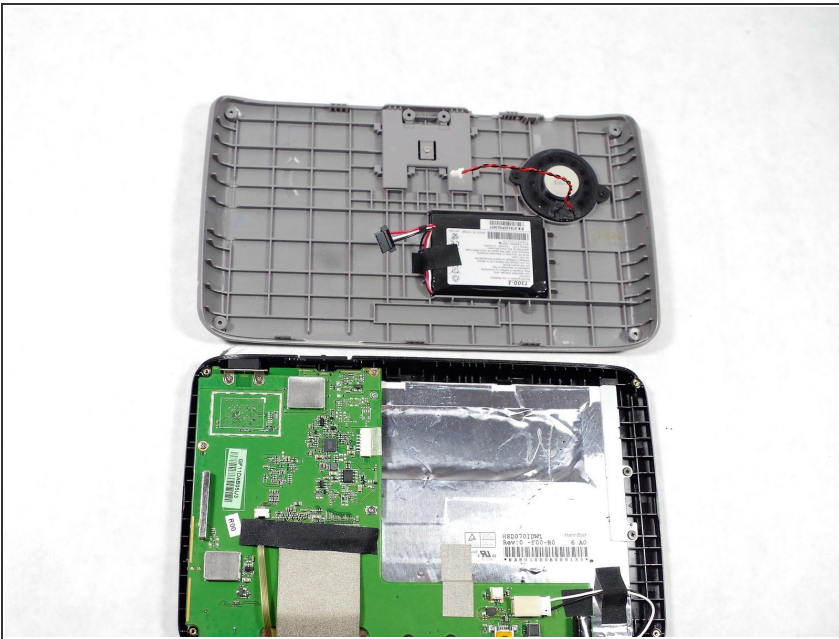
Step 7



- Remove the cable of the battery.

 Tape removal is not necessary.

Step 8



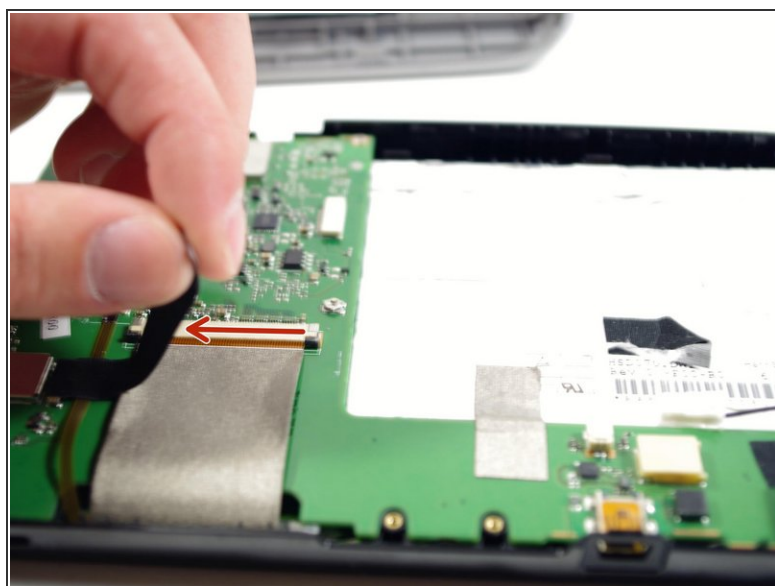
- Place the back panel gently on the table.

Step 9 — Motherboard



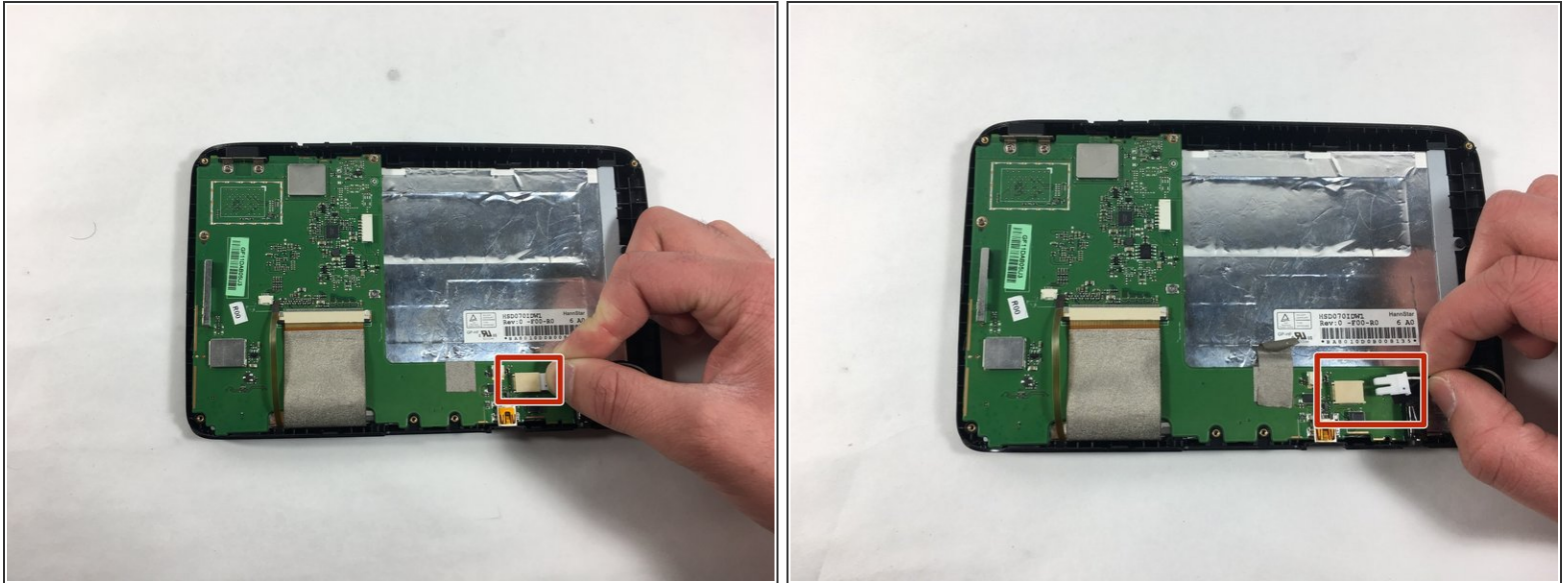
- Unscrew four screws in the top left corner by using Phillips #0 size screwdriver.

Step 10



- Remove all the electrical tapes from different places as indicated.

Step 11



- Remove the white clip attached with black and white wires.
- ⚠ Carefully remove the clip by pulling it to the opposite side from the clip.

Step 12



- Unplug the wires by pushing it down and slowly pulling it towards you.
- After unplugging the wires, take the motherboard out.

To reassemble your device, follow these instructions in reverse order.