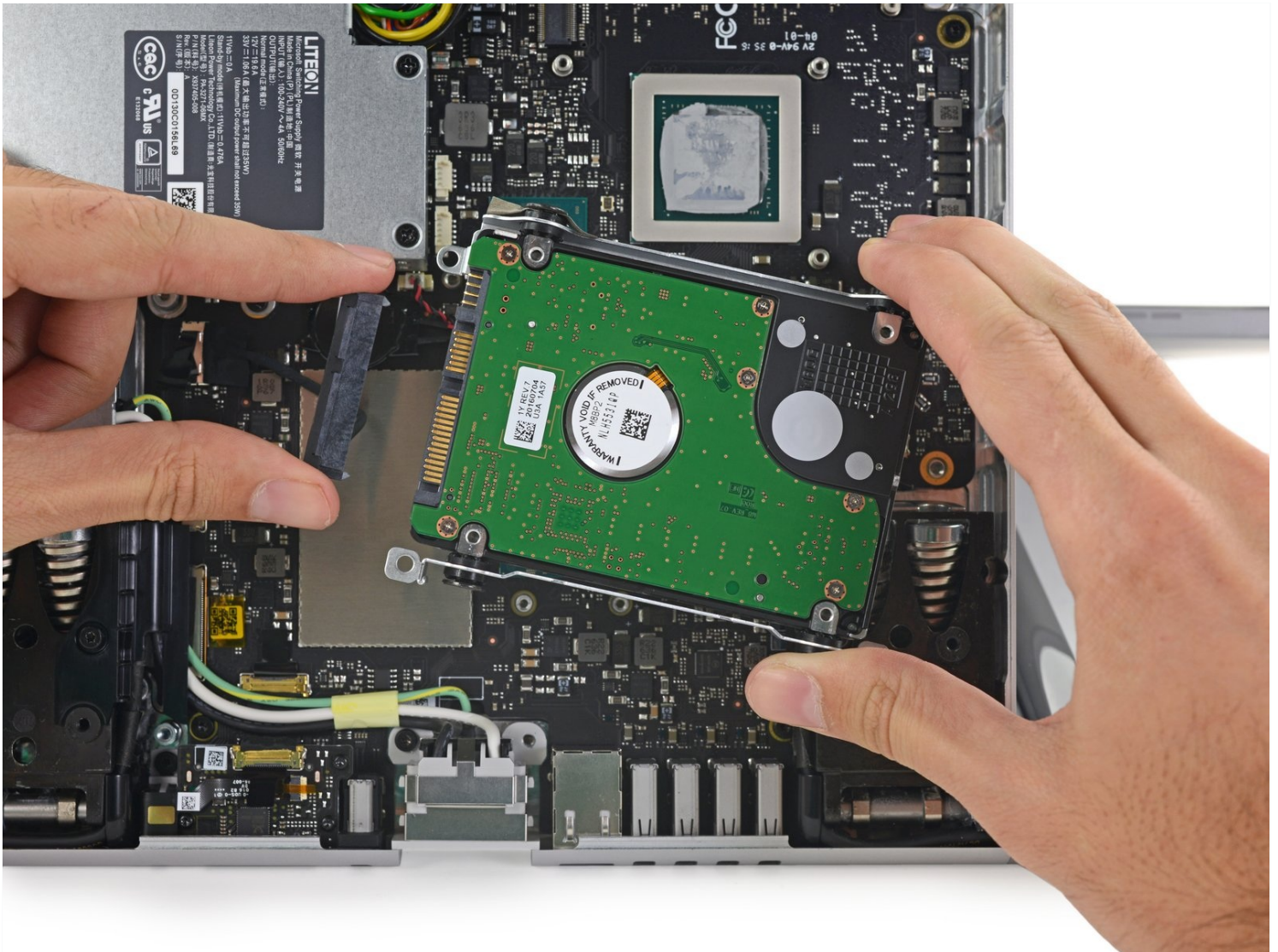




Surface Studio 2.5" Hard Drive or Fans Replacement

Do you want a bigger hard drive or a second...

Written By: The Raptor



INTRODUCTION

Do you want a bigger hard drive or a second SSD? Follow this guide to replace your hard drive.
1/10/24 Edit: If your Studio is noisy, but the computer is operating fine, replace your fans first; they are available on Amazon, eBay, etc.

🔧 TOOLS:

[Tweezers](#) (1)
[T6 Torx Screwdriver](#) (1)
[TR8 Torx Security Screwdriver](#) (1)
[5mm Nut Driver](#) (1)
[Heavy-Duty Suction Cups \(Pair\)](#) (1)
[iFixit Opening Tool](#) (1)
[5mm Allen Hex Socket](#) (1)

⚙️ PARTS:

[Crucial MX500 1 TB SSD](#) (1)
[Crucial MX500 250 GB SSD](#) (1)
[Crucial MX500 500 GB SSD](#) (1)
[2 TB SSD](#) (1)
[Thermal Paste](#) (1)

Step 1 — 2.5" Hard Drive and/or Cooling Fans (2)

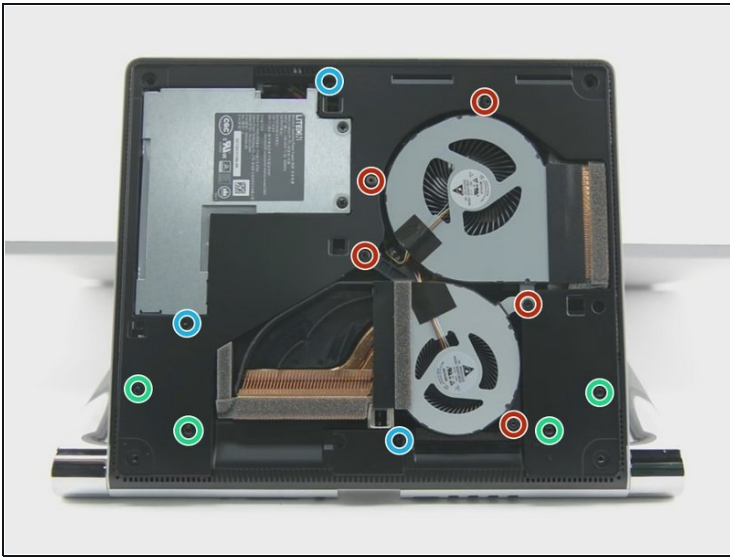


- Lay the Surface face down on a padded surface

⚠️ Be careful not to scratch the screen when laying it face down

- Remove the four rubber feet at each corner concealing the Torx screws
- Remove the four Torx screws under the rubber feet.
- Two screws on the upper corners are longer than two screws on the lower corners.
- Attach suction cups to the bottom cover and then pull on the suction cups to free the bottom cover.

Step 2



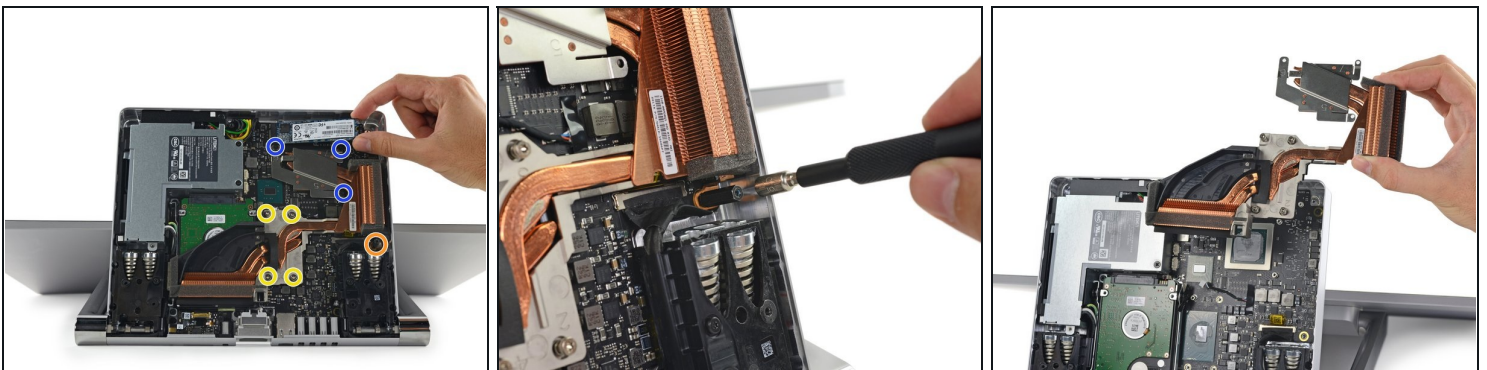
- Remove five torx screws holding the two fans to the midframe
- Remove the two fans
- ⓘ The fan connectors are behind the midframe and not yet accessible. Let the fans hang loosely until you can access the connectors.
- ⓘ Four large torx screws and four small torx screws hold the midframe to the upper frame.
- Remove four large torx screws holding the midframe
- Remove four small torx screws holding the midframe. Note: The 4th blue circle is missing in the picture and is above the far right green circle. In line with the second red circle and below the GPU heat sink.

Step 3



- Slowly remove the midframe
- ⚠ Be careful: the speaker on the midframe is still attached to the motherboard
- Detach the connectors for the two fans and the speaker

Step 4



- ① With the midframe removed, it is also possible to replace the M.2 SSD during this step
- ① The hard drive is underneath the heatsink so the heatsink must be removed
- Fully loosen (they don't come out) the four spring loaded torx screws labeled 1 to 4;
- Remove three torx screw labeled 5 to 7
- Remove 5mm hex mounting post
- Use a spudger to remove the heatsink assembly from the motherboard

Step 5



- Remove three torx screws holding the hard drive brackets
- Remove 5mm hex mounting post
- Remove the hard drive and disconnect the SATA/SATA power cable
- Remove four torx screws holding the hard drive brackets to the hard drive
- ☑ On reassembly, be sure to clean the CPU and GPU and heat sink and reapply thermal compound to the CPU and GPU

To reassemble your device, follow these instructions in reverse order.