



# Dell Chromebook 11 Model P22T LCD screen Replacement

This guide will show how to replace the LCD.

Written By: Jon



# INTRODUCTION

This guide will show how to replace the LCD.



## TOOLS:

- [Phillips #0 Screwdriver](#) (1)
- [Plastic Opening Tools \(optional\)](#) (1)
- [Metal Spudger](#) (1)



## PARTS:

- [11.6" Chromebook LCD N116BGE-EA2REV.C1](#) (1)

## Step 1 — Open the Chromebook (Flat)



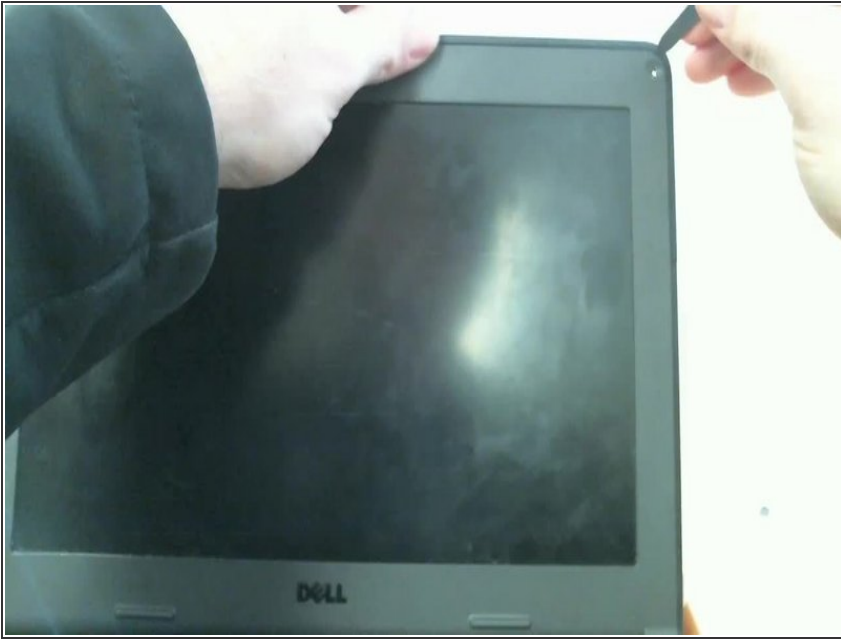
- Open the chromebook until it is completely flat. The LCD top cover should touch the desk.

## Step 2 — Remove bezel frame screws and covers



- Remove the both the top left and right corner screw covers using the metal spudger tool within your iFixit Toolkit.
- There may be a thin layer of adhesive left behind the screw cover. You can peel this away with this same metal spudger tool.
- Remove the 2 screws with a Phillips #0 or #00 screwdriver.

### Step 3 — Remove bezel frame



- Using the [metal spudger](#) or your favorite pry tool, lightly separate the bezel frame from the chromebook. Start in one of the top corners near the screws.

### Step 4 — Remove LCD screws



- Remove the 4 LCD screws in each corner of the screen. Make sure to just unscrew the 4 corner screws as the other screws are not needed.



## Step 5 — Remove LCD and disconnect LCD Connector



- Lift the LCD out from within the frame and carefully flip the LCD over slowly toward you and set it on top of the keyboard.
- Then disconnect the LCD connector which is located behind the LCD

## Step 6 — Install new LCD & replace screws



- Start by holding the new LCD with the backside (white) facing up so you will have access to the LCD cable connector.
- Then connect the LCD cable to the new LCD connector located on the back of the new LCD screen.
- Replace the 4 LCD screws in each corner of the screen.

## Step 7 — Install LCD bezel frame & Replace screws



- Start by holding the LCD bezel frame over the 2 LCD hinges. Then snap the bezel frame together along all sides. You should hear "snapping" sounds so do not worry :)
- Replace the 2 LCD bezel frame screws. You do not necessarily to replace the screw covers as they do not stay on very well anyways.

To reassemble your device, follow these instructions in reverse order.