



# MacBook Unibody Model A1278 Fan Replacement

Written By: Walter Galan



# INTRODUCTION

Replacing a defective fan will keep your laptop running cool.



## TOOLS:

- [Phillips #00 Screwdriver](#) (1)
- [Spudger](#) (1)



## PARTS:

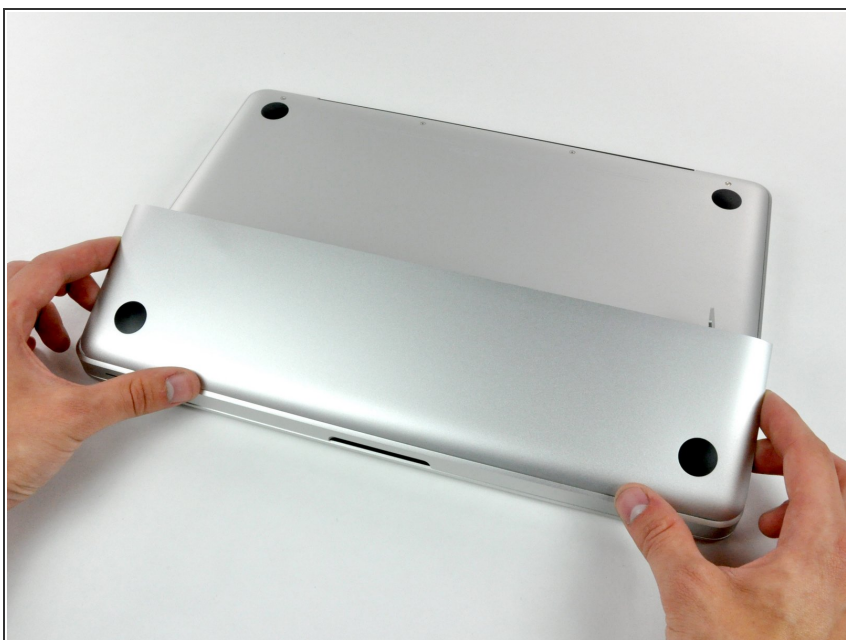
- [MacBook Pro Unibody 13" \(Mid 2009 to Mid 2012\) and MacBook Unibody 13" \(A1278 and A1342\) Fan](#) (1)

## Step 1 — Access Door



- With the case closed, place the Unibody top-side down on a flat surface.
- Depress the grooved side of the access door release latch enough to grab the free end. Lift the release latch until it is vertical.

## Step 2



- The access door should now be raised enough to lift it up and out of the Unibody.

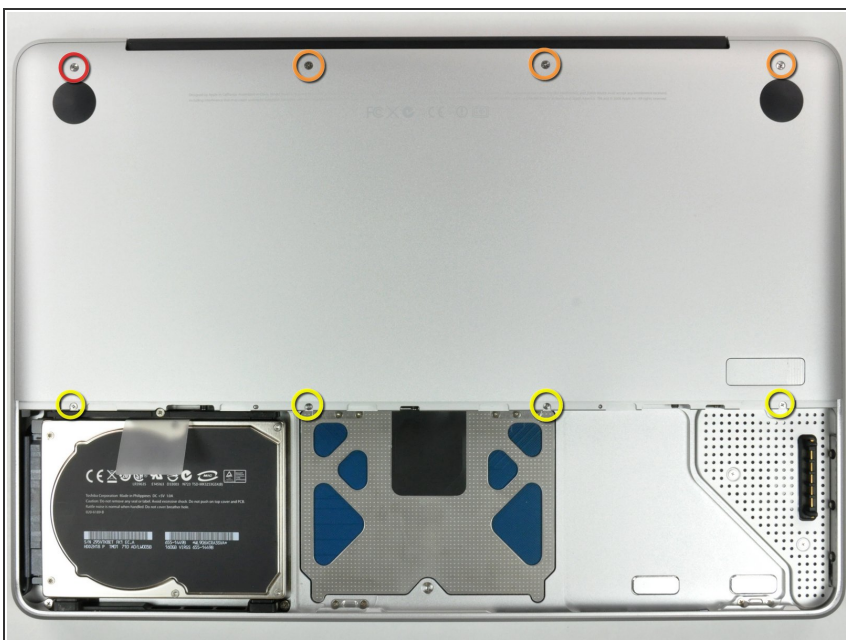


## Step 3 — Battery



- ❗ Be sure the access door release latch is vertical before proceeding.
- Grab the white plastic tab and pull the battery up and out of the Unibody.

## Step 4 — Lower Case



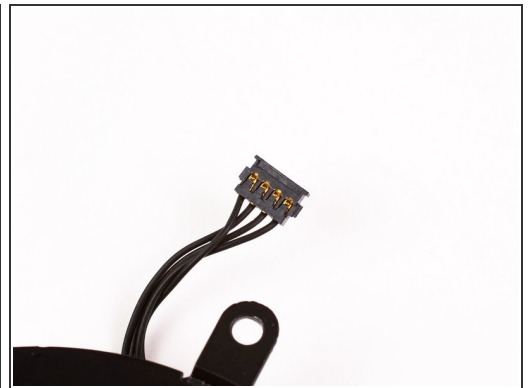
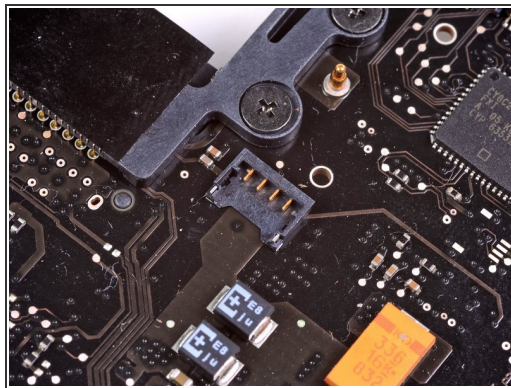
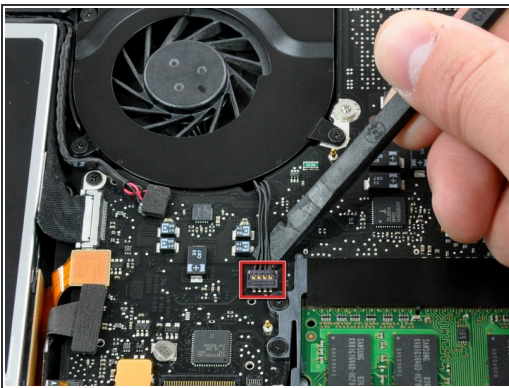
- Remove the following eight screws securing the lower case to the chassis:
  - One 3 mm Phillips screw.
  - Three 13.5 mm Phillips screws.
  - Four 3.5 mm Phillips screws.

## Step 5



- Using both hands, lift and remove the lower case off the upper case.

## Step 6 — Fan



- Use a spudger to pry the fan connector straight up off the logic board.
- i It is useful to twist the spudger axially from beneath the fan cable wires to release the connector.
- ! The fan socket and the fan connector can be seen in the second and third pictures. Be careful not to break the plastic fan socket off the logic board as you use your spudger to lift the fan connector straight up and out of its socket. The layout of the logic board shown in the second picture may look slightly different than your machine but the fan socket is the same.



## Step 7



- Remove the following three screws securing the fan to the upper case:
  - Two 5 mm Phillips screws.
  - One 7 mm Phillips screw.
- ⓘ The longer of the three screws belongs in the upper left corner of the fan.

## Step 8



- Lift the fan out of the upper case.

To reassemble your device, follow these instructions in reverse order.