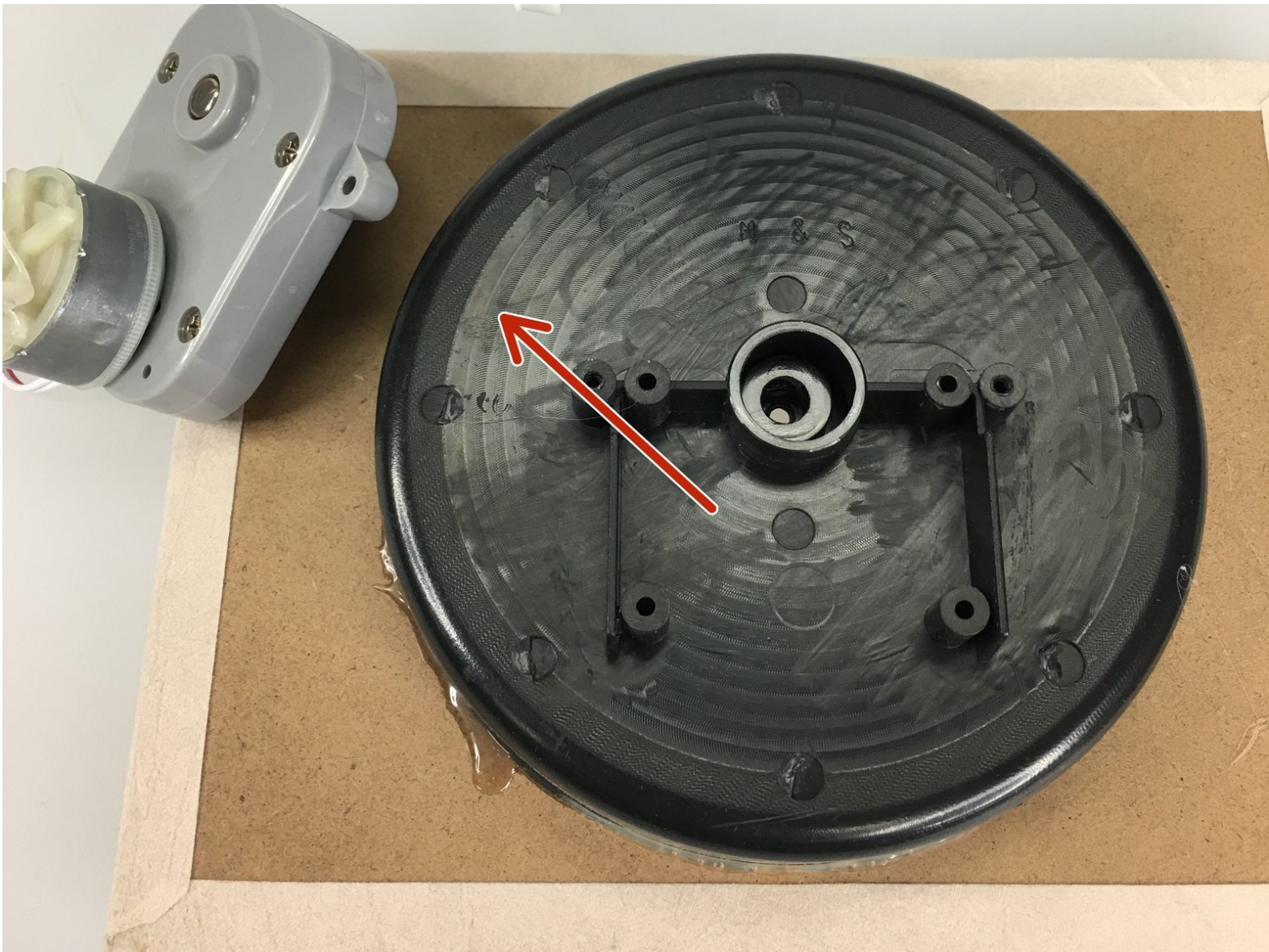




# WWB222324 Watch Winder Motor Replacement

Instructions to replace winder motor and gear...

Written By: easy\_source



# INTRODUCTION

Instructions to replace winder motor and gear assembly.



## TOOLS:

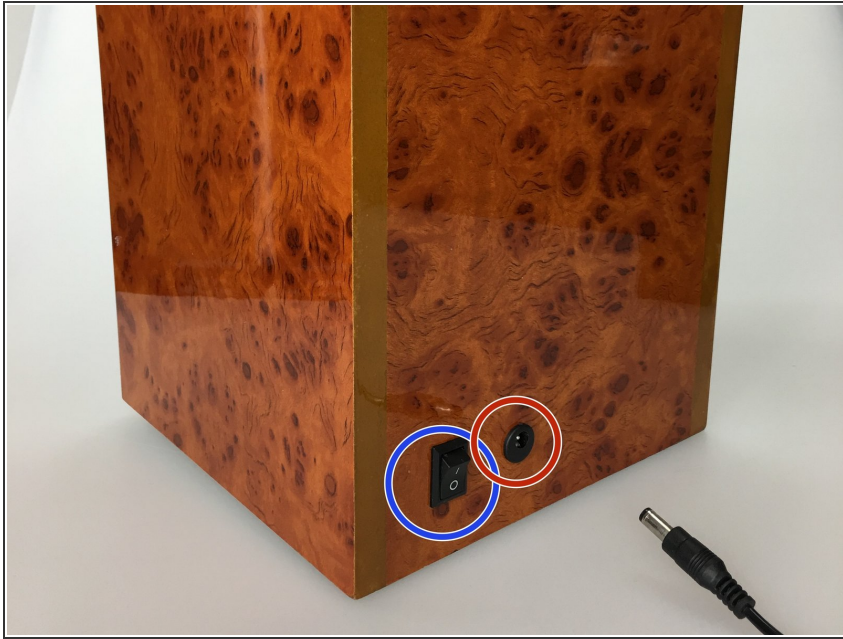
- [Phillips #0 Screwdriver](#) (1)



## PARTS:

- [Watch Winder Motor & Gear Assembly](#) (1)

## Step 1 — Motor



- Turn the winder off
- Unplug the power cord

## Step 2



- Pull angled turntable platform toward you by upper seam

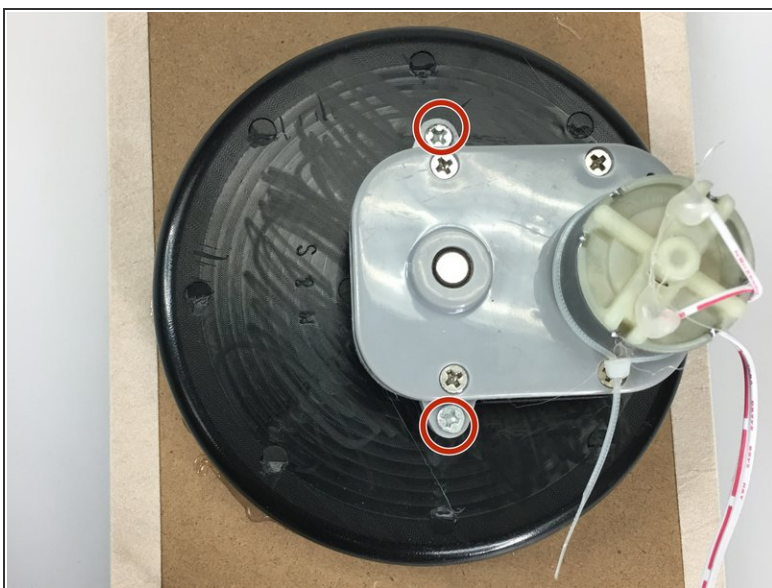


### Step 3



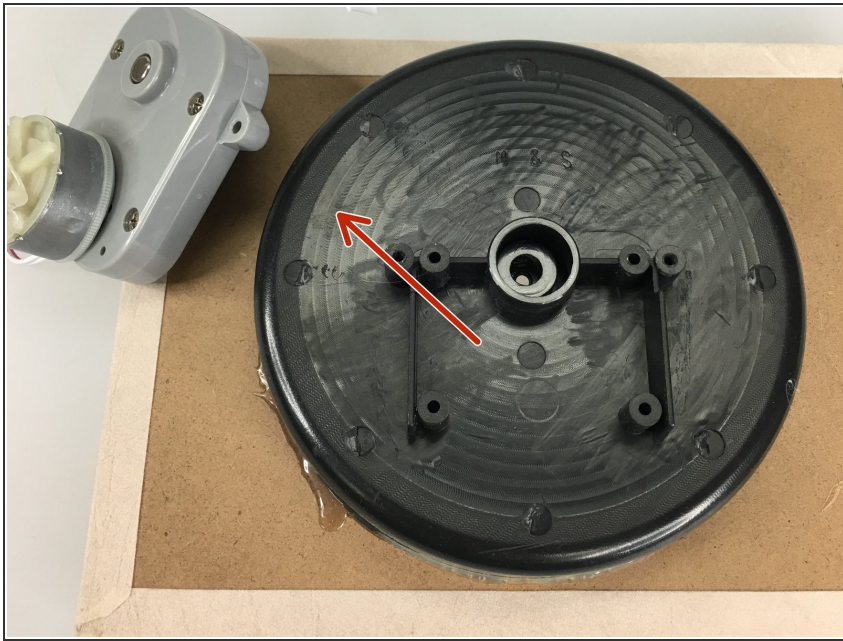
- Unplug motor connection cable from circuit board

### Step 4



- Unscrew two retaining screws from gearbox
- Remove round watch insert
- Unscrew single retaining screw from cup

## Step 5



- Pull gearbox and motor out from back of the turntable platform
- Follow steps in reverse order to replace motor

To reassemble your device, follow these instructions in reverse order.